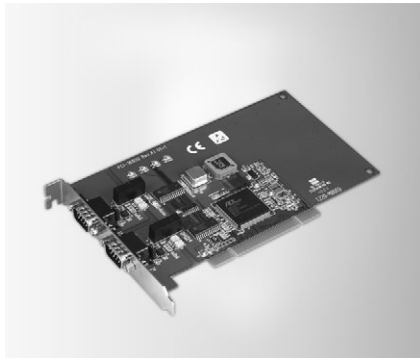


# PCI-1680U PCL-841 PCM-3680/I

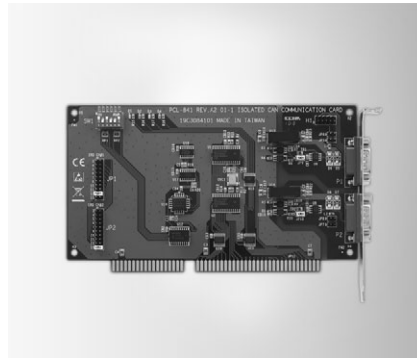
**2-port CAN-bus Universal PCI Card  
with Isolation Protection**  
**2-port CAN-bus ISA Card  
with Isolation Protection**  
**2-port CAN-bus PC/104 / PCI-104 Module  
with Isolation Protection**



PCI-1680U



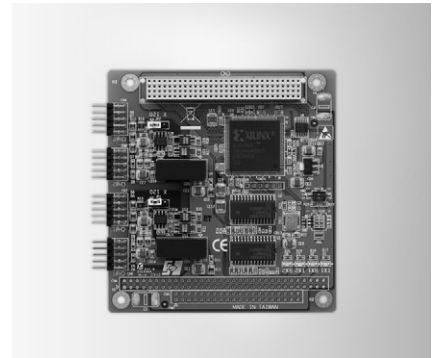
FCC CE



PCL-841



FCC CE



PCM-3680/I



FCC CE

## Features

- Operates two separate CAN networks simultaneously
- High speed transmission up to 1 Mbps
- Optical isolation protection of 1000 V<sub>DC</sub>
- Windows DLL library and examples included
- I/O address automatically assigned by PCI PnP
- Supports 32-bit/64-bit Windows 2000/XP/Vista/7 and Linux

## Specifications

### General

- Card Interface** Universal PCI
- Certifications** CE, FCC
- Connectors** 2 x DB9-M
- Dimensions** 185 x 100 mm (7.3" x 3.9")
- Ports** 2
- Power Consumption** 5 V @ 400 mA typical

### Communications

- CAN Controller** SJA-1000
- CAN Transceiver** 82C250
- Protocol** CAN2.0 A/B
- Speed** 1 Mbps
- CAN Frequency** 16 MHz
- Signal Support** CAN\_H, CAN\_L

### Protection

- Isolation Protection** 1,000 V<sub>DC</sub>

### Environment

- Operating Temp.** 0 ~ 65° C (32 ~ 149° F)

## Ordering Information

- PCI-1680U** 2-port CAN Uni-PCI COMM Card w/Iso

## Features

- Operates two separate CAN networks simultaneously
- High speed transmission up to 500 kbps
- Optical isolation protection of 1000 V<sub>DC</sub>
- Windows DLL library and examples included
- Wide IRQ selection for each port: IRQ 3, 4, 5, 6, 7, 9, 10, 11, 12, 15
- Supports 32-bit/64-bit Windows 2000/XP/Vista/7 and Linux

## Specifications

### General

- Card Interface** ISA
- Certifications** CE, FCC
- Connectors** 2 x DB9-M
- Dimensions** 185 x 100 mm (7.3" x 3.9")
- Ports** 2
- Power Consumption** 5 V @ 400 mA typical

### Communications

- CAN Controller** SJA-1000
- CAN Transceiver** 82C250
- Protocol** CAN2.0 A/B
- Speed** 500 kbps
- IRQ** 3, 4, 5, 6, 7, 9, 10, 11, 12, or 15
- Memory Segment Base Address** From C800H to EF00H
- Signal Support** CAN\_H, CAN\_L

### Protection

- Isolation Protection** 1,000 V<sub>DC</sub>

### Environment

- Operating Temp.** 0 ~ 50° C (32 ~ 122° F)

## Ordering Information

- PCL-841** 2-port CAN-bus ISA Comm. Card w/ Iso

## Features

- Operates two separate CAN networks simultaneously
- High speed transmission up to 1 Mbps
- 16 MHz CAN controller frequency
- Optical isolation protection ensures system reliability
- LEDs indicate Transmit/Receive status on each port
- Supports high operating temperature (-40 ~ 85° C)
- Supports 32/64-bit WinXP/Vista/Win7 and Linux
- Supports WinCE 5.0/6.0

## Specifications

### General

- Card Interface** PCM-3680: PC/104  
PCM-3680I: PCI-104
- Certifications** CE, FCC
- Connectors** 2 x DB9-M with cable
- Dimensions** 90 x 96 mm (3.6" x 3.8")
- Ports** 2
- Power Consumption** 5 V @ 400 mA

### Communications

- CAN Controller** SJA-1000
- CAN Transceiver** 82C250
- Protocol** CAN2.0 A/B
- Speed** Up to 1 Mbps programmable transfer rate
- CAN Frequency** 16 MHz
- Signal Support** CAN\_H, CAN\_L

### Protection

- Isolation Protection** 2,500 V<sub>DC</sub>

### Environment

- Operating Temp.** -40 ~ 85° C (-40 ~ 185° F)

## Ordering Information

- PCM-3680** Dual-port Iso CAN-bus PC/104 Module
- PCM-3680I** Dual-port Iso CAN-bus PCI-104 Module