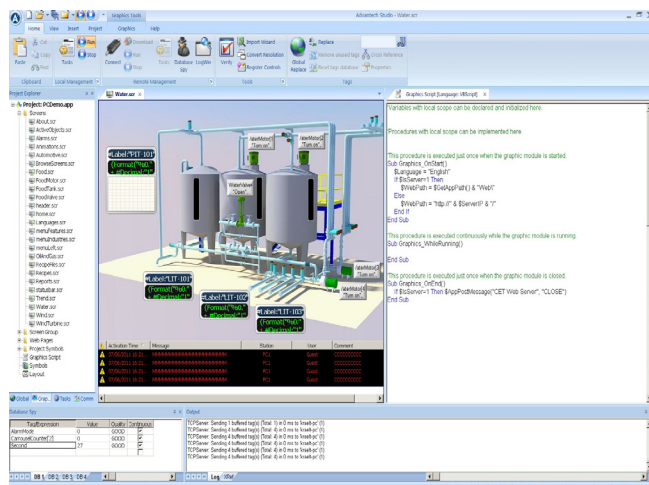


Advantech Studio

Web-enabled HMI/ SCADA Software



Features

- .Net & ActiveX
- ADO/ODBC
- Alarms
- Animation
- Audio
- Configuration Tools
- Email
- Embedded Licenses
- FDA CFR
- FTP
- Graphic Enhancements
- Multi-Language
- PDF Export
- Recipes
- Reports
- Save Screen Shots Dyn.
- SNMP
- Symbols
- Tag Database
- OPC Classic, .NET 3.0, UA

Introduction

Advantech Studio is a powerful, integrated collection of automation tools that includes all the building blocks required to develop modern Human Machine Interfaces (HMIs), and Supervisory Control and Data Acquisition System (SCADA) applications that run on 32-bit & 64-bit Windows XP/Vista/7, Server Editions and CE.NET, or in an Internet/Intranet environment. A simple drag and drop, point and click development environment simplifies the most complex behavior of your live processes, but a flexible and easy-to-use scripting language is also available for special requirements. Advantech Studio is currently being used in nearly 125,000 installations worldwide.

Advantech Studio for Windows CE.NET & Embedded is based on Advantech Studio's full scale supervisory control and monitoring system, and has almost all of the same features, including an object-oriented database, math functions, report generation, archiving, alarms, batch recipes, and interfaces for PLCs, remote I/O and TCP/IP networking. In other words, Advantech Studio for Windows CE.NET is a full-function supervisory control and monitoring system that fits in the palm of your hand or can be embedded in the chipset of a low-cost operator interface. Advantech Studio for Windows CE.NET is software for complete supervisory control and process monitoring with an operator interface that is available for the Microsoft Windows CE.NET operating system platform.

System Requirements

System Type	Hard Drive Space	Supported Operating Systems
Development/Runtime	500Mb	XP SP3, Vista SP1, All Win 7, Server 2003 SP2 or later, All Server 2008 versions
Embedded View Runtime	64Mb	CE 5.0 and later (Windows Embedded Compact, XPe SP2, WES 2009, WES 7)
Secure Viewer Thin Client	64Mb	Any of the above OS's
Web Thin Client	8Mb	Any of the above OS's
Studio Mobile Access (SMA) Thin Client	n/a	Any web enabled device

* Above options require network adapter, optional USB, optional CD-Rom, IE 7.0

Feature Details

Database

Connect to any SQL database (MS SQL, MySQL, Sybase, Oracle), or MS Access or Excel, and ERP/MES systems (including SAP), even from Windows Embedded CE.

Drivers

Astudio 7.0 contains over 240 built-in drivers for most PLCs, temperature controllers, motion controllers, and bar code/2D/RFID readers. New or updated drivers for Eaton ELC, Siemens, Opto 22, CAN, CANopen, and BACnet have also been developed.

Intellectual Property Protection

Documents, scripts and even math worksheets can be individually password protected. This prevents unauthorized viewing or editing of your corporate custom functionality.

Redundancy

For critical applications where data is vital, Astudio v7.0 supports web server and database redundancy.

Scheduler

Schedule custom tag changes on date/time, frequency, or any trigger.

Scripting

Two powerful scripting languages are supported. Use built-in Advantech Studio functions or use standard VBScript to take advantage of widely available resources.

Security System

Native support for distributed security systems, and full integration with Microsoft Active Directory via LDAP allows you to take advantage of built-in security. Astudio also supports users assigned to multiple groups.

Troubleshooting

Quickly debug and verify a project using local and remote tools for troubleshooting, including status fields, DatabaseSpy and LogWin.

Web Thin Clients

Remotely view screens as web pages using Internet Explorer web browser, or Advantech Studio Secure Viewer. Use SMA and any web enabled cell phone with a browser to monitor/access tags (process values), and alarms.

Ordering Information

This product is only for sale in North America

Advantech Studio for the XP/Vista/Windows 7, Server Versions, 32-bit & 64-bit Versions								
Dev + Run Part Number	Dev Only Part Number	Run Only Part Number	Tag Count	Drivers	Web Client	Secure Viewer	SMA Client	Product Name
AS7-UNL00-NTE	AS7-UNL00-DEVE	AS7-UNL00-RTE	512,000	32	1	1	1	Advantech Studio Advanced Server
AS7-64520-NTE	AS7-64520-DEVE	AS7-64520-RTE	64,000	8	1	1	1	Advantech Studio Control Room
AS7-32520-NTE	AS7-32520-DEVE	AS7-32520-RTE	32,000	5	1	1	1	Advantech Studio Control Room Lite
AS7-16520-NTE	AS7-16520-DEVE	AS7-16520-RTE	16,000	5	1	1	1	Advantech Studio Operator Workstation Plus
AS7-40520-NTE	AS7-40520-DEVE	AS7-40520-RTE	4,000	5	1	1	1	Advantech Studio Operator Workstation
AS7-15520-NTE	AS7-15520-DEVE	AS7-920NT-RTE	1,500	3	0	1	1	Advantech Studio Local Interface
n/a	n/a	AS7-320NT-RTE	300	2	0	1	1	Advantech Studio Lite Interface Plus
n/a	n/a	AS7-15002NT-RTE	150	1	0	1	1	Advantech Studio Lite Interface

Advantech Studio Embedded Runtimes							
Embedded View for XPe, WES 2009, WES 7	CEView for CE 5.0 and later	Tag Count	Drivers	Web Client	Secure Viewer	SMA Client	Product Name
AS7-40521-RTE	AS7-42503-RTE	4,000	5	1	1	1	Advantech Studio Embedded Professional
AS7-15521-RTE	AS7-920CE-RTE	1,500	3	1	1	1	Advantech Studio Embedded Standard
AS7-03521-RTE	AS7-03522-RTE	300	1	1	1	1	Advantech Studio Embedded Lite Plus
AS7-15201-RTE	AS7-15002CE-RTE	150	1	1	1	1	Advantech Studio Embedded Lite

Advantech Studio Add-ons			
Web Client Sessions Part Number	Secure Viewers Part Number	Studio Mobile Access (SMA) Part Number	Added Concurrent Users
AS7-002-WSE	AS7-002-SVE	AS7-002-SMAE	2
AS7-004-WSE	AS7-004-SVE	AS7-004-SMAE	4
AS7-008-WSE	AS7-008-SVE	AS7-008-SMAE	8
AS7-0016-WSE	AS7-0016-SVE	AS7-0016-SMAE	16
AS7-0032-WSE	AS7-0032-SVE	AS7-0032-SMAE	32
AS7-0064-WSE	AS7-0064-SVE	AS7-0064-SMAE	64
AS7-00128-WSE	AS7-00128-SVE	AS7-00128-SMAE	128

Advantech Studio Hardkey	
Part Number	Product Name
DC-IND USBHK4	Advantech Studio v7.0 USB Hardkey

Advantech Studio Tools

Advantech offers a suite of toolkits allowing users to extend the capabilities of Advantech Studio and/or Advantech Studio CEView. Use of these toolkits is not required for most applications, but if you need to support a proprietary driver protocol, convert an existing PanelView or PanelMate application or develop a custom function, these Advantech toolkits provides you with the means to do so. The OPC Server, CSV file, ODBC database, RSLogix 5000 CSV Database import are included with the development software. We also offer gateway communication to Wonderware Intouch & Intellution/GE iFix.