

Advantech AE Technical Share Document

Date	2015 / 08 / 07	SR#	1-2179018131
Category	■ FAQ □ SOP	Related OS	WinCE
Abstract	How to achieve the persistent variables setting in Advantech Multiprog		
Keyword	persistent variables, Multiprog		
Related Product	ADAM-5550KW, ADAM-5560KW, APAX-5520KW APAX-5522KW, APAX-5620KW, APAX-6572KW		

[Problem]

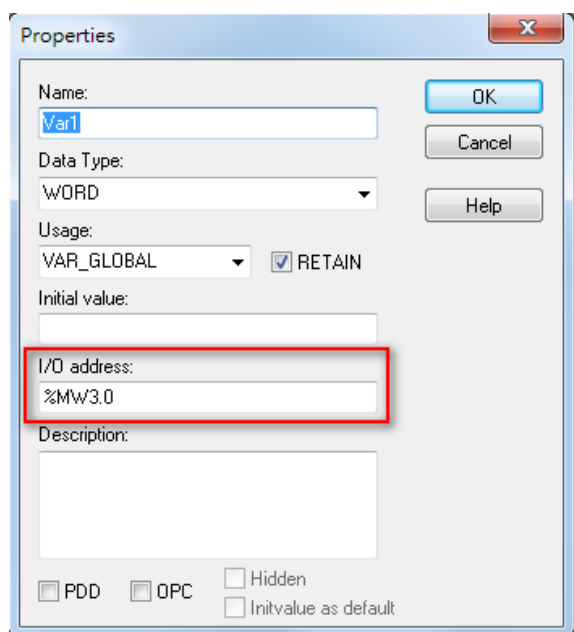
The KW Multiprog V5.35 doesn't support the persistent variables function. If you want to achieve this persistent variables function in Advantech PAC controller, you can use the below solutions.



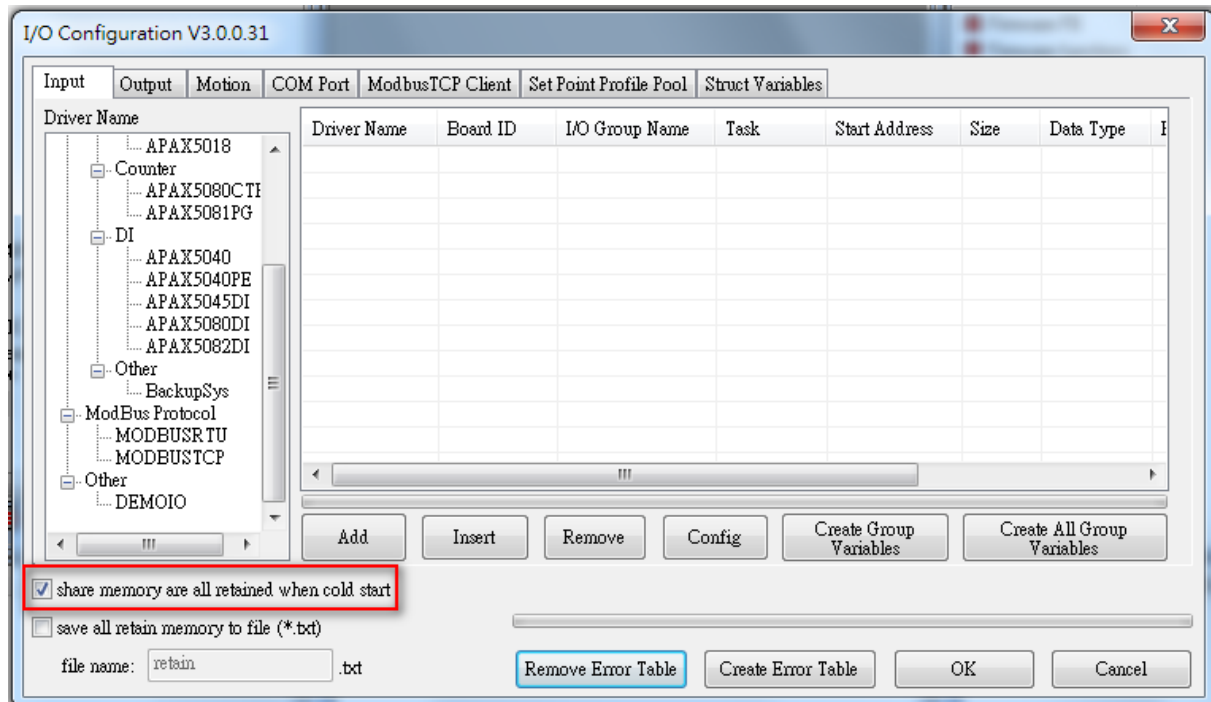
[Solution]

Method 1:

You can declare the persistent variables in the share memory address as below



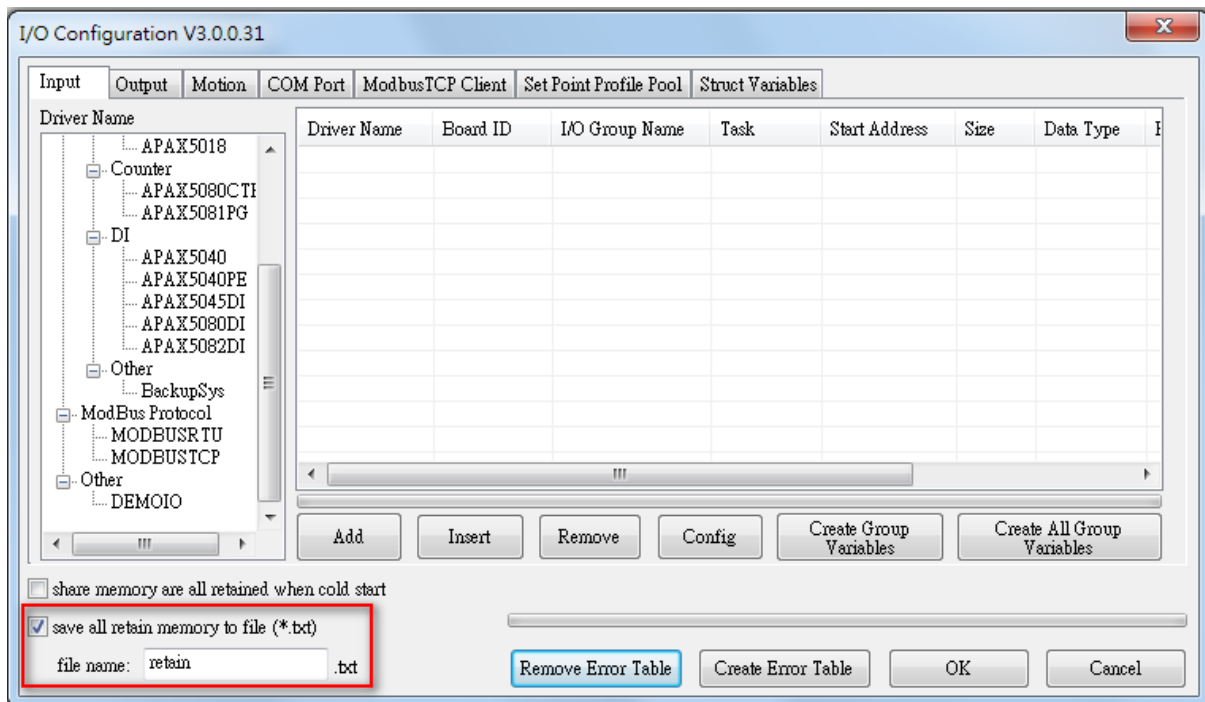
Click the option “share memory are all retained when cold start”.



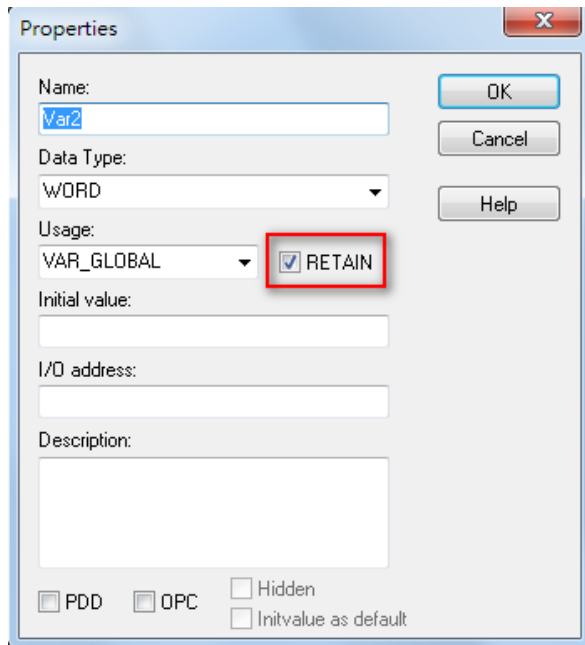
Then all the share memory data will be all retained when cold start like as the persistent variables.

Method 2:

If you want to achieve the persistent variables not on the share memory address, you can choose the option “save all retain memory to file (*.txt)”.



The persistent variables must click the retain option as below



You can use the FB “AdvRestoreReain” to restore all the retain variables. Therefore, you need to add one task when PAC controller cold start.

