

Advantech AE Technical Share Document

Date	2015 / 11 / 24	Release Note	<input type="checkbox"/> Internal <input checked="" type="checkbox"/> External
Category	<input type="checkbox"/> FAQ <input checked="" type="checkbox"/> SOP	Related OS	N/A
Abstract	SOP to Check Firmware Version of Intelligent System Module for IPC & ACP & HPC Chassis		
Keyword	Firmware, IPC-6025 alarm board, SAB-2000		
Related Product	Intelligent System Module, Firmware Version, IPC-5122, IPC-7130, IPC-6025, ACP-4D00, ACP-2000, ACP-2010, ACP-2320, ACP-4000, ACP-4010, ACP-4020, ACP-4320, ACP-4340, HPC-7242, HPC-7442		

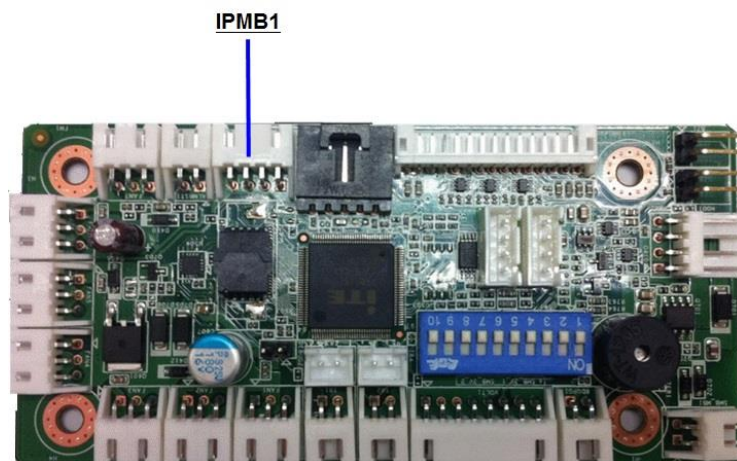
■ Step 1: Check Hardware Connection:

Please check the SMBus connection between your motherboard and intelligent system module.

The connector on SAB-2000 will show as picture 1, PCB printing is IPMB1.

The connector on IPC-6025 alarm board will show as picture 2, PCB printing is SMB1.

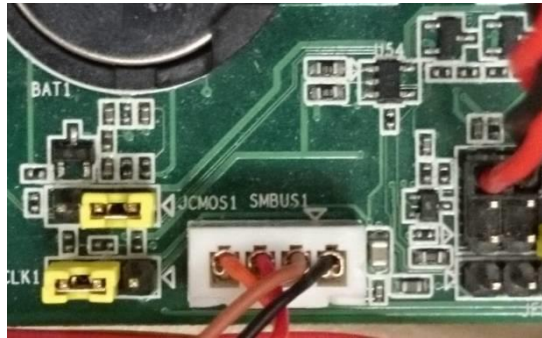
The connector on the motherboard will show as picture 3, PCB printing is SMBUS.



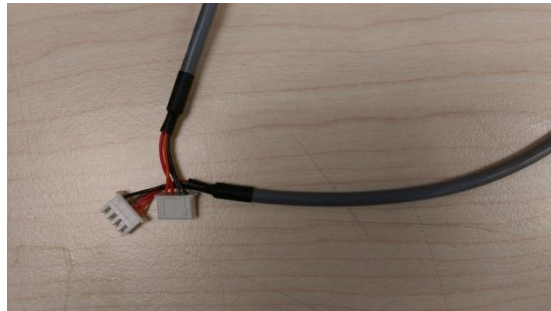
Picture1. IPMB1 Connector on SAB-2000 alarm board.



Picture2. SMB1 Connector on IPC-6025 alarm board.



Picture3. SMBUS connector on backplane and ATX MB



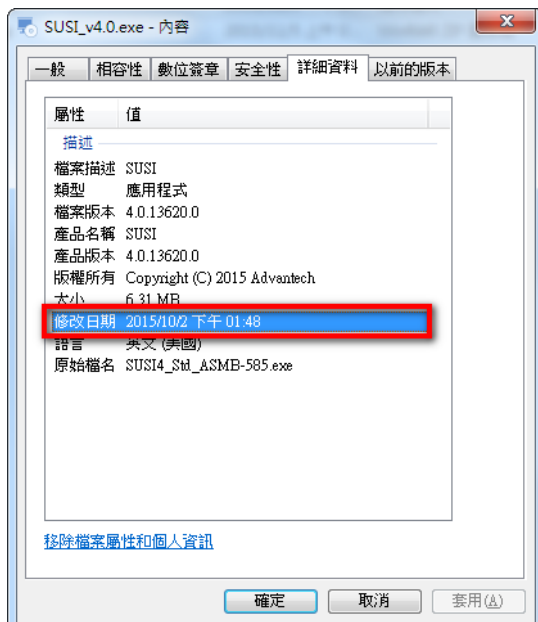
Picture4: SMBus Cable.

Step 2: Check SUSI4 API version:

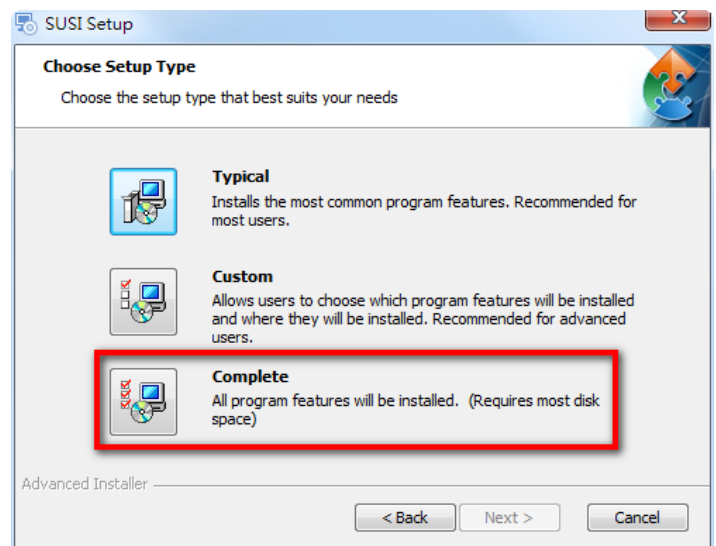
Right click on the SUSI4.exe you download from Advantech website (Software API for each motherboard model name) and check the properties.

If the build version is earlier than 2014/9/9, please go to step 3.

If the build data is later than 2014/9/9 (include), please go to step 4 and please note that **complete installation for SUSI4 API** is required.



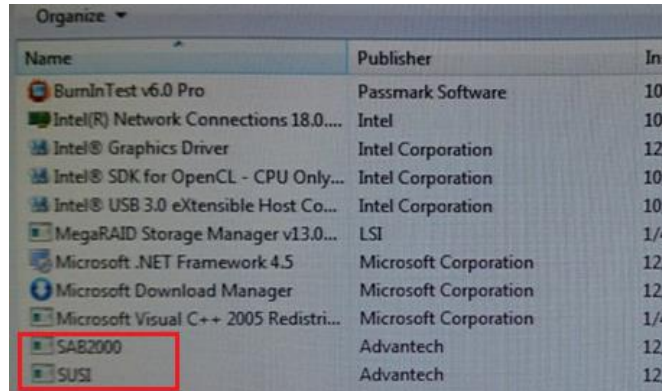
Picture5. Check the build date of SUSI4



Picture6. Complete installation for SUSI4.

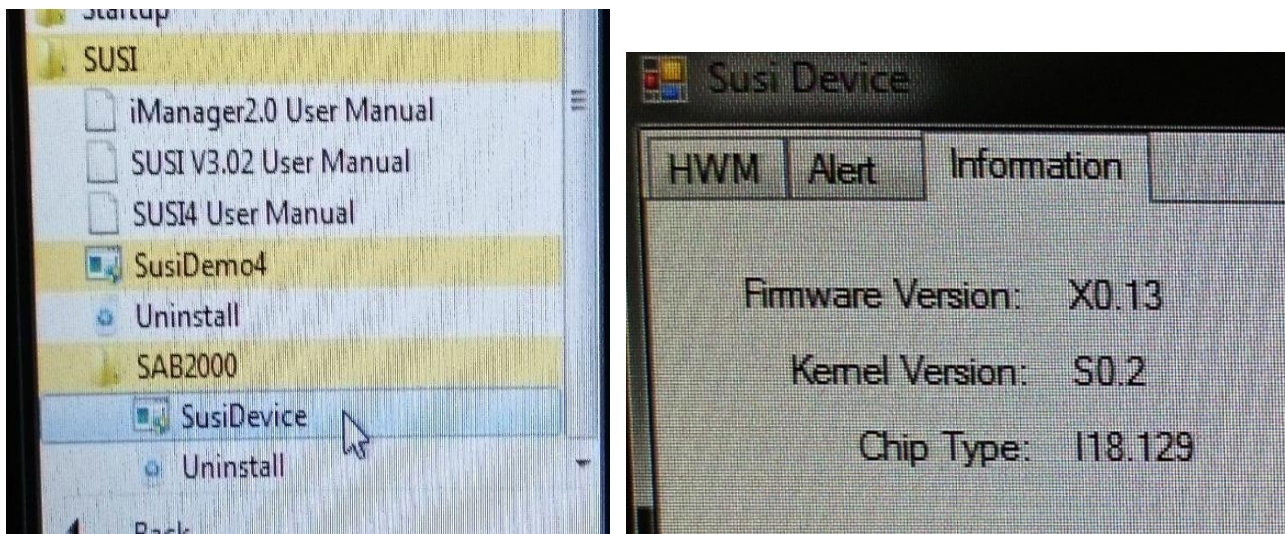
■ **Step 3: Install SAB-2000.exe:**

If the build version of your SUSI4 is earlier than 214/9/9, please download SAB-2000.exe from Advantech website (Software API for each chassis model name) and install on your host system. You will find out two programs under *control panel > uninstall or upgrade a program*, SUSI and SAB-2000 as picture 7.



Picture7. Install SUSI4 and SUSI device API

Run SusiDevice demo tool at startup (*startup > SUSI > SAB-2000 > SusiDevice*) then the demo tool will show you the hardware monitor and firmware information as picture 8.



Picture8. Run SUSI device API to read Firmware version

■ **Step 4: Include dll file:**

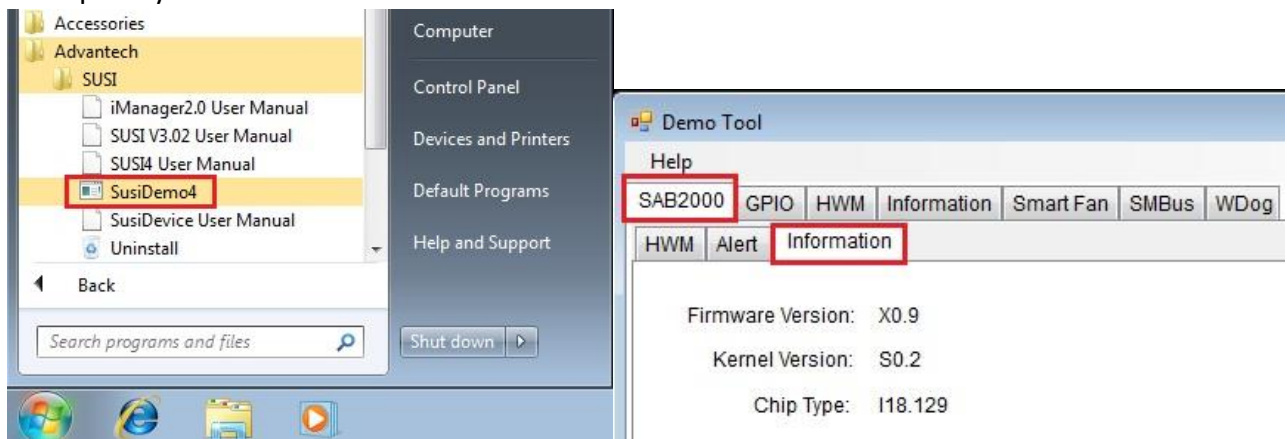
If the build version of your SUSI4 is later than 2014/9/9, please make sure **complete installation** is proceed.

Download and put the DeviceSAB-2000.dll from Advantech website (Software API for each chassis model name) at the following directory.

C:\Program Files\Advantech\SUSI\Applications\SUSI4 Demo\C#\bin\Plugins

Run SUSI4 demo tool (*startup > Advantech > SUSI > SusiDemo4*), and you will see the SAB-2000 tab shown in the SUSI4 demo, then you can check the hardware monitor and firmware information at SUSI4 demo tool.

Please be note that, install SAB-2000.exe with SUSI4 build later than 2014/9/9 isn't not required and you will be informed by an error message to ask you install SUSI4 first even you have install SUSI4 completely.



Picture9. Run SUSI4 API to read Intelligent System Module Firmware version



Picture10. No need to install SAB-2000.exe if you SUSI4 is later than 2014/9/9

■ Flow Chart:

