

Advantech AE Technical Share Document

Date	2016/09/23	SR#	1-2570045594
Category	<input type="checkbox"/> FAQ <input checked="" type="checkbox"/> SOP	Related OS	N/A
Abstract	APAXIO, How to change ID of APAX IO module		
Keyword	Switch ID, Rotatory switch, APAX I/O		
Related Product	APAX-5013, APAX-5017, APAX-5017H, APAX-5018, APAX-5028, APAX-5040, APAX-5045, APAX-5046, APAX-5046SO, APAX-5060, APAX-5080		

■ Problem Description:

When using Adam/Apax .NET utility to check the APAX I/O status (*Figure 1*), there is an ID number for each APAX I/O module, what's the meaning and function of this ID? Can user use utility to change the ID numbers? If not, how to do so?

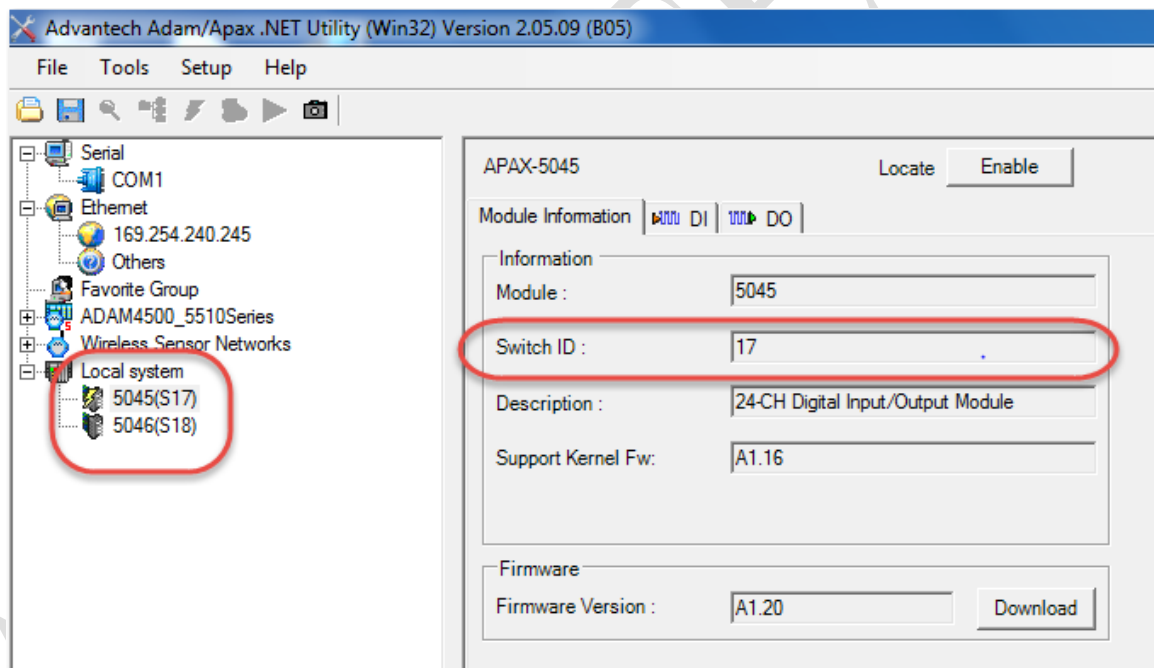


Figure 1

■ **Answer:**

In this document, we will explain the meaning of ID number as shown in the *Figure 1*.

We'll also highlight how to identify the ID of an APAX I/O module with rotatory switch on its front panel.

Due to the limitation of dual port RAM size, we have a limitation for the numbers of APAX I/O that could be used with a controller or coupler such as APAX-5580 or APAX-5070.

User can have a maximum of 16 analog I/O modules or 32 digital I/O modules at the same time.

(16 analog I/O modules + 16 digital I/O modules is also acceptable.)

For this reason, the rotatory switches on every APAX I/O are designed as an identity so that we can ensure system will not exceeds the limitation when every APAX I/O is set with a unique ID.

For DI/O module, if user want to set the ID into 16~31, user need to put the DIP switch of module to "ON" position as shown in *Figure 2*.

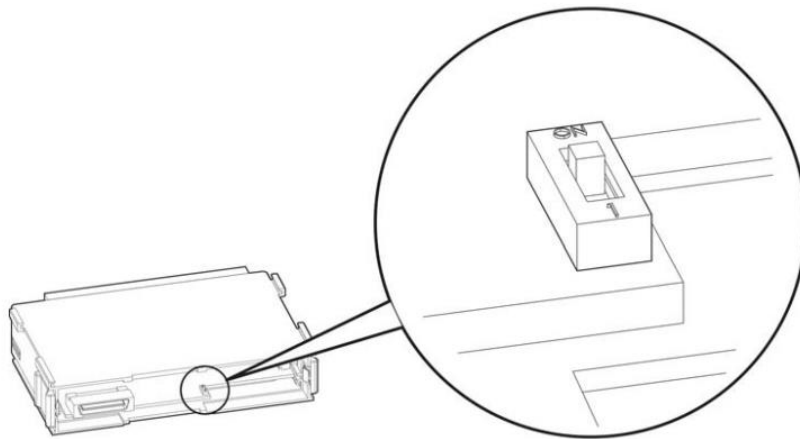


Figure 2

The ID number of every APAX I/O is set by the rotatory switch on the front panel of APAX I/O (*Figure 3*). Take the pictures on the right hand side of *Figure 3* as the example, the ID of top module is “D” and ID of bottom module is “C”

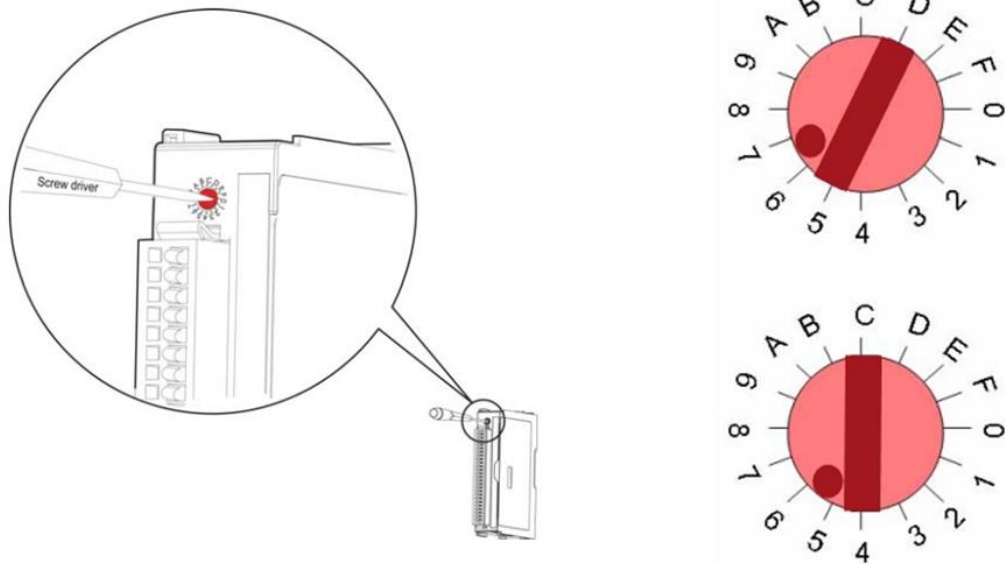


Figure 3