

## Advantech AE Technical Share Document

Date	2016/10/28	SR#	1-2717165065
Category	■FAQ □SOP	Related OS	N/A
Abstract	ADAM_APAX_PAC, How to synchronize the system time		
Keyword	Time synchronization, SNTP, WinCE 5.0, SNTP Registry Settings		
Related Product	APAX-5620, ADAM-5560, APAX-5522		

### ■ Problem Description:

The customer has more than one WinCE 5.0 platform such as APAX-5620, ADAM-5560 in their system, and they want to synchronize the system time between different platform.

Is it possible to use Ethernet to synchronize the system time? How to enable this function?

■ **Answer:**

In WinCE 5.0 OS, actually it already supports SNTP (Simple Network Time Protocol), user could enable this function with the following setting:

1. Open Registry Editor:

You could find it at “Programs→Advantech → Registry Editor ” (Figure 1)



Figure 1

2. Setting SNTP Registry:

According to the information of Microsoft's web-site, you could find SNTP Registry Settings at **HKEY\_LOCAL\_MACHINE\Services\Timesvc**

Please check the table with following link for more detail description of every variable name and its meaning of registry.

[https://msdn.microsoft.com/zh-tw/library/ms884926\(d=printer\).aspx](https://msdn.microsoft.com/zh-tw/library/ms884926(d=printer).aspx)

3. Adjust the data of registry and save the registry table.

Normally, the customer needs to enter the domain name of the SNTP server and select a proper refresh and recovery refresh rate as shown in *Figure 2*.

After finishing setting of the registry, please save the registry to make it take effect.

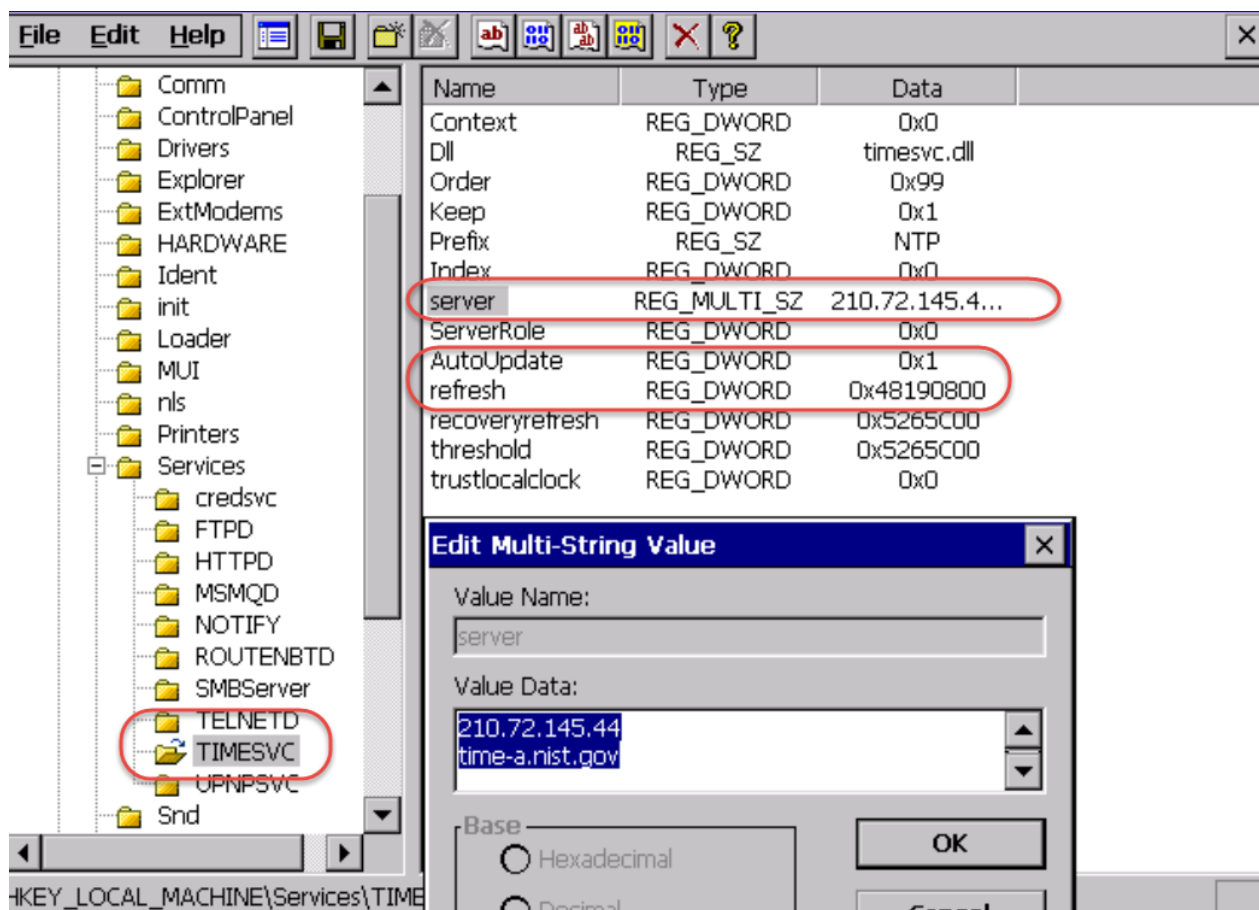


Figure 2