

Advantech AE Technical Sharing Documentation

Date	2017 / 06 / 29	SR#	1-2927829361
Category	<input type="checkbox"/> FAQ <input checked="" type="checkbox"/> SOP	Related OS	Yocto linux WIN7X64
Abstract	How to use the micro USB as the console port with V2.02.001 image on UNO-1252G		
Keyword	UNO-1252G / micro USB / console		
Related Product	UNO-1252G		

■ Problem Description:

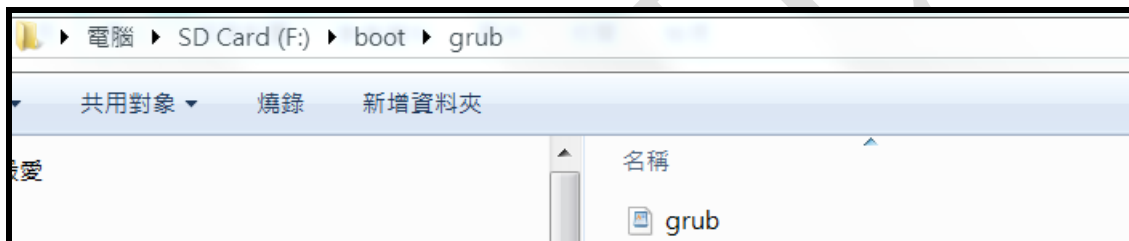
Customers get to change the console port from COM2 to micro USB port.

■ Brief Solution - Step by Step:

Step1

Change the variable 'default' on the grub.conf file on SD card.

The file can be found under /boot/grub



Edit the script to

```
default 2
timeout 5

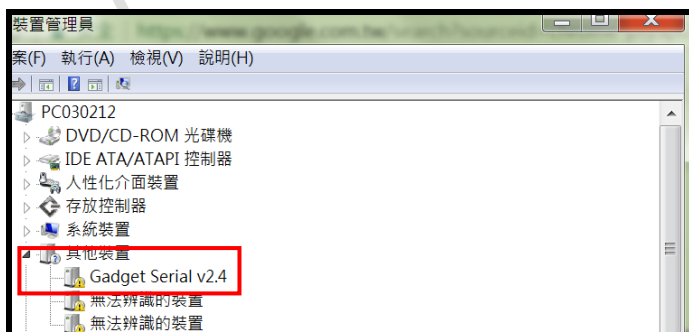
color white/blue white/cyan
```

If the variable 'default' is 1, the Linux console will be directed to COM2 (ttyS1).

If the variable 'default' is 2, the Linux console will be directed to micro USB (ttyGS1).

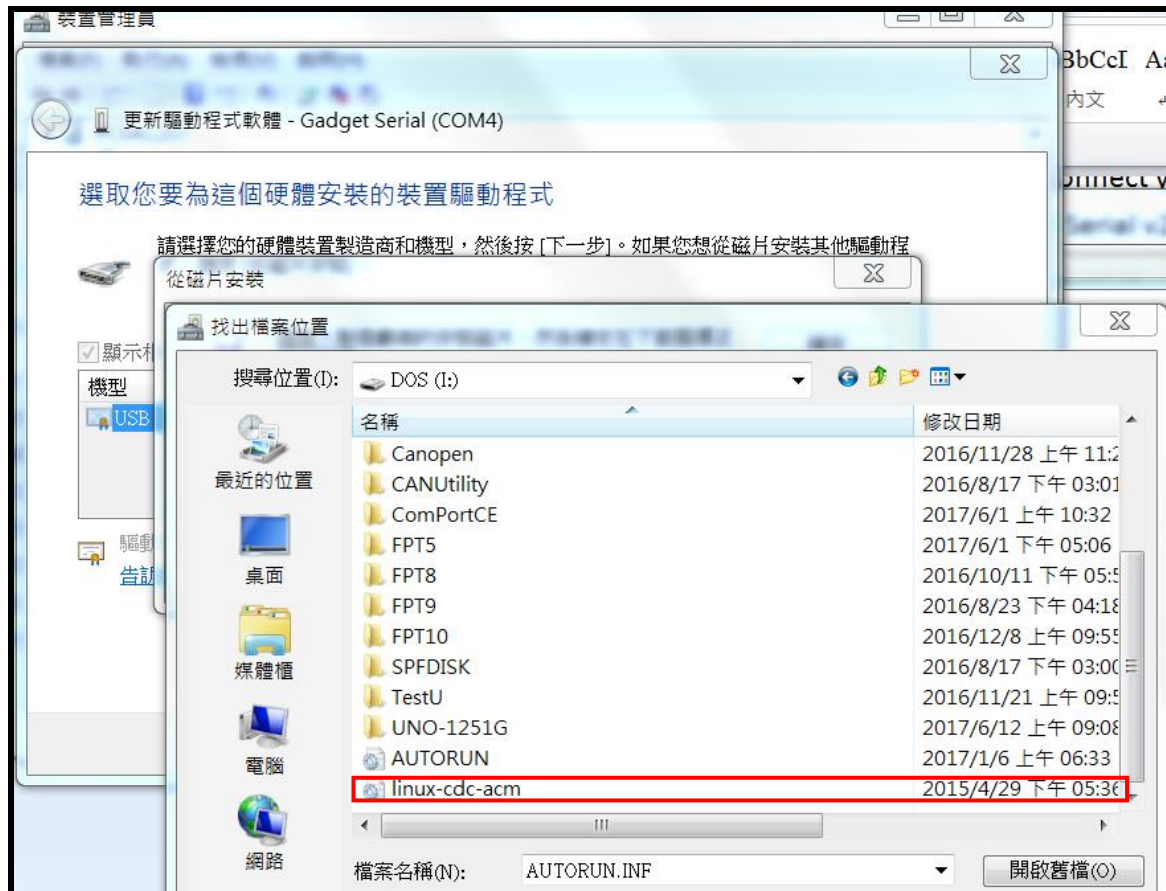
Step2

Using Windows7X64, connect your UNO-1252G using the micro USB to USB cable, you will the device listed at Gadget Serial v2.4.



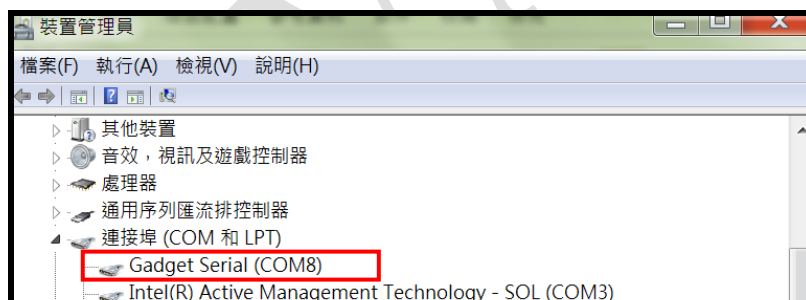
Step3

Download the INF file which you can find it under the driver section on our website. Once downloaded, right click the reclamation mark and manual install the driver.



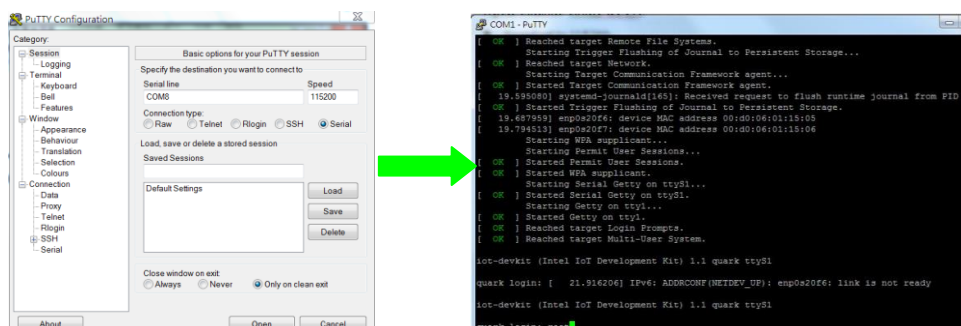
Step4

Once ready, you will see the device under **COM & LPT** category



Step5

Use putty to the port, you will be able to access the UNO.



■ Reference:

N/A

ADVANTECH