

Advantech AE Technical Share Document

Date	2018/1/17	SR#	1-3339671113
Category	■FAQ □SOP	Related OS	N/A
Abstract	Account and Password Issue of ADAM-3600		
Keyword	Account, Password, Firmware, FW version, Image, TagLink		
Related Product	ADAM-3600		

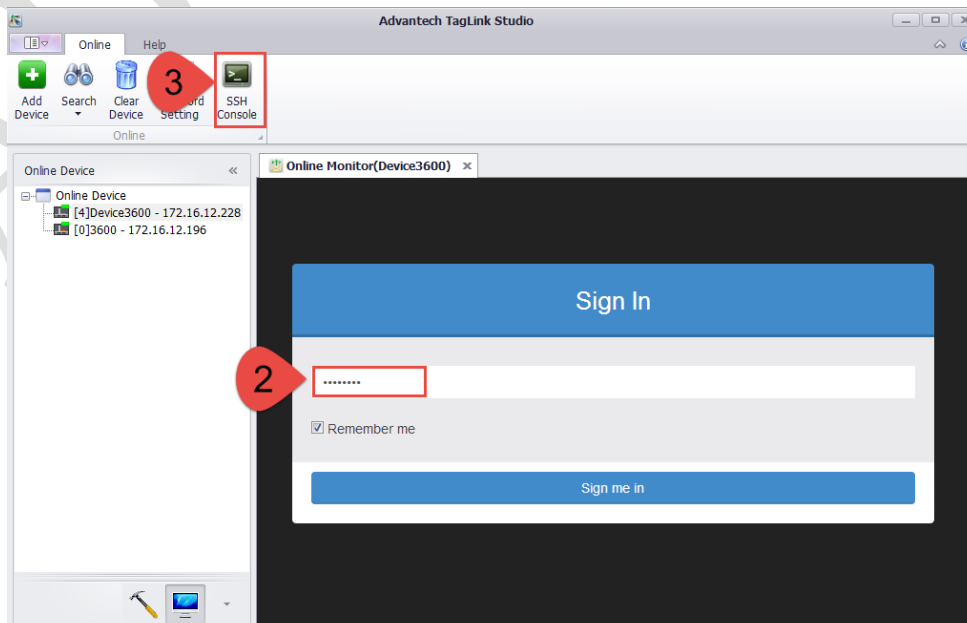
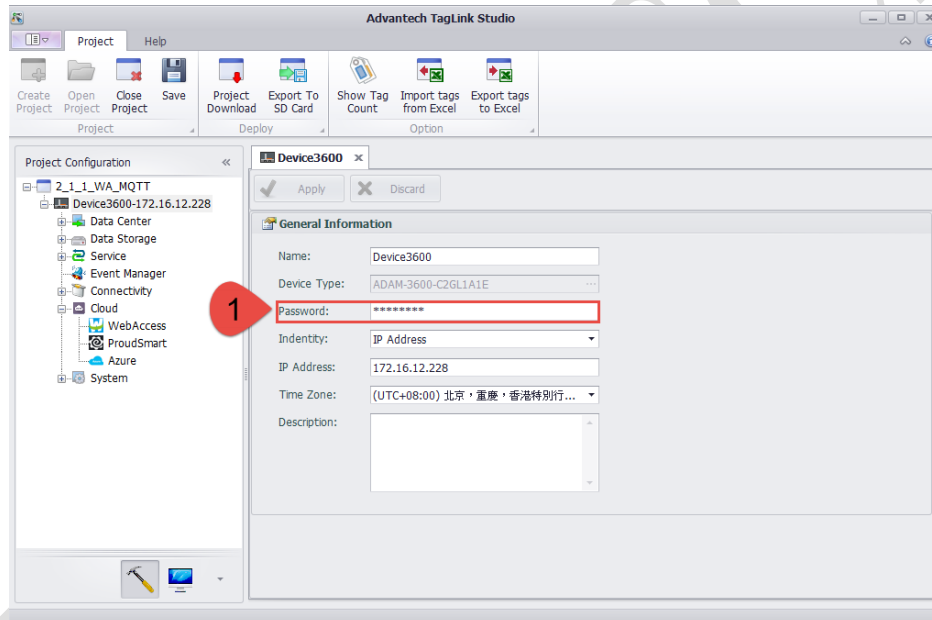
■ Problem Description:

This document explains account and password issue of ADAM-3600.

■ Answer:

In TagLink, there are 3 places user may need to key in account and password.

(1) TagLink project download (2) TagLink Online Monitor log-in (3) SSH Console connecting



Generally speaking, the operation in Linux console is different from TagLink operation based on ADAM-3600 product design. (TagLink is for off-line project configuration.)

In TagLink version 1.2.x, the operation in Linux console (SSH/ FTP) uses account “*root*” with default *no password*. After user logs in Linux system, user can change password by himself.

In TagLink version 1.2.x, there is no account for download project but with default password “00000000”. However, in TagLink Online Monitor, TagLink borrows the account “*root*” in Linux system with default no password. If user wants to log in Online Monitor, the account and password shall be keyed in following Linux system (SSH console) setup.

After version 2.0.x, considered that user may need multiple accounts in Linux system, ADAM-3600 supports two accounts by default, “*root*” and “*sysuser*”. These two accounts are no password by default in Linux system (SSH Console/ FTP).

Another change after version 2.0.x is that TagLink does not borrow Linux account, that is to say, user does not need to key in account to log in Online Monitor, but with default password “00000000”. For project download, user also uses the same default password “00000000”.

In summary, below list illustrates the account and password in different image and TagLink versions.

Version	TagLink (Project Download)		TagLink (Online Monitor)		SSH Console/ FTP	
	Account	Default Password	Account	Default Password	Account	Default Password
1.2.x	no need account	00000000	root	no password	root	no password
2.0.x	no need account	00000000	no need account	00000000	root/ sysuser	no password