

Advantech AE Technical Share Document

Date	2018 / 06 / 12	Release Note	<input type="checkbox"/> Internal <input checked="" type="checkbox"/> External
Category	<input checked="" type="checkbox"/> FAQ <input type="checkbox"/> SOP	Related OS	Windows 7 / 10
Abstract	How to make a 3G connection by Windows network settings?		
Keyword	3G connection / Windows network setting / 3G module		
Related Product	PPC-3xx0S / EWM-C109F601E		

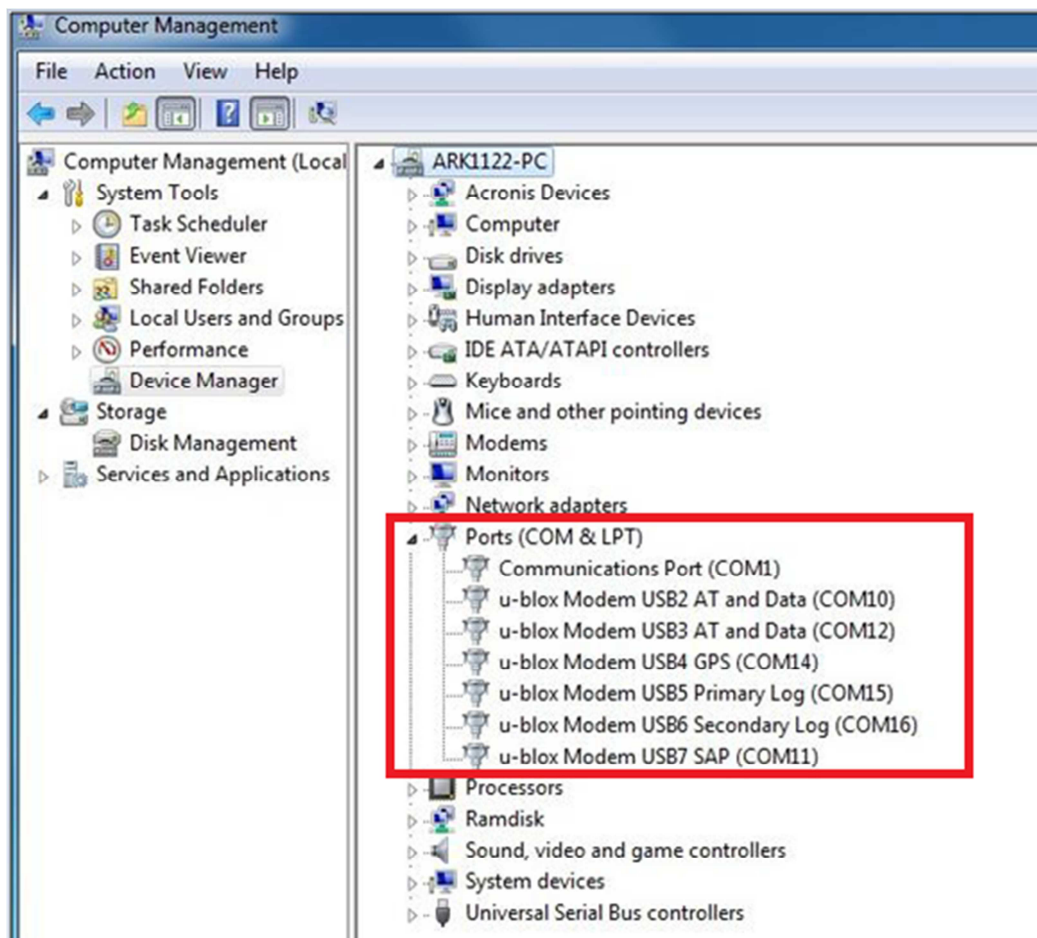
■ **Problem Description:**

How to make a 3G connection by Windows network settings?

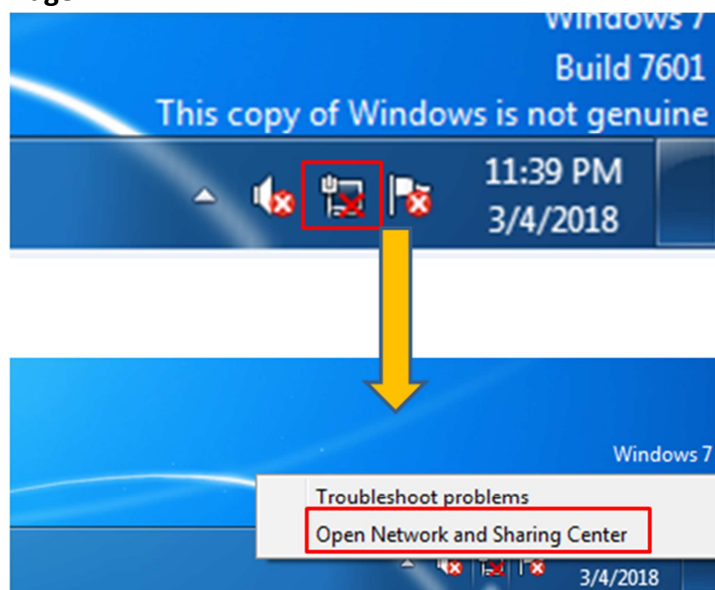
■ **Brief Solution - Step by Step:**

1. If the driver has been installed correctly, you can see the devices in the device manager as <image 1>
2. open network and sharing center on the toolbar, as <image 2>
3. click on "Set up a new connection or network" then select "Set up a dial-up Connection" as <image 3>
4. Type the Dial-up phone number from your ISP then create a connection as <image4>

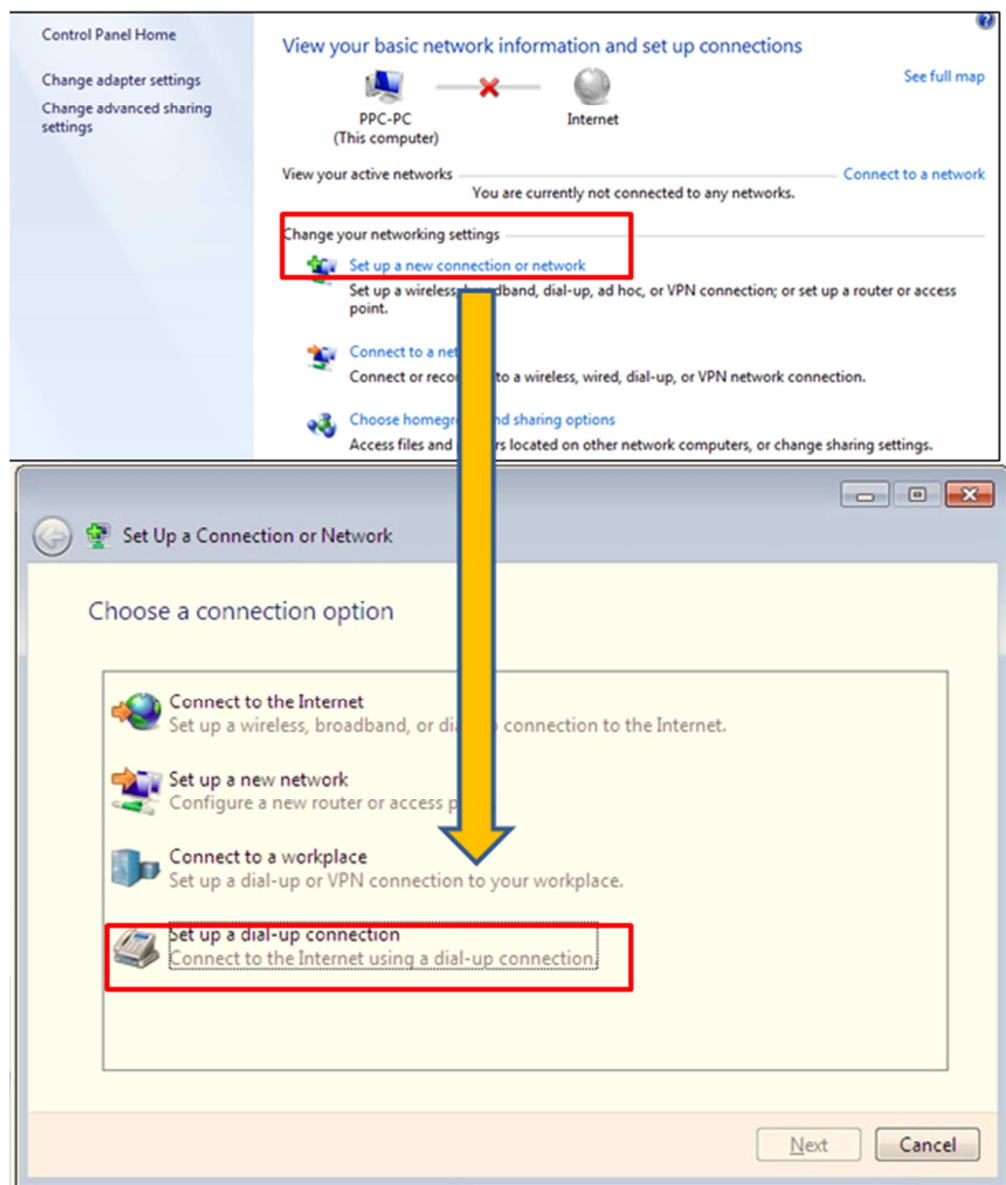
<image 1>



<image 2>



<image 3>



<image 4>

Create a Dial-up Connection

Type the information from your Internet service provider (ISP)

Dial-up phone number: *99# [Dialing Rules](#)

User name: [Name your ISP gave you]

Password: [Password your ISP gave you]

☐ Show characters

☐ Remember this password

Connection name: Dial-up Connection

☐ Allow other people to use this connection
This option allows anyone with access to this computer to use this connection.

[I don't have an ISP](#)

Create **Cancel**