

Advantech AE Technical Sharing Documentation

Date	2018 / 12 / 05	SR#	1-3619475421
Category	<input checked="" type="checkbox"/> FAQ <input type="checkbox"/> SOP	Related OS	Win10 LTSP 64bit
Abstract	How to solve the problem of yellow marks found in device manager while running Win10 LTSP?		
Keyword	Win10 LTSP 64bit, UEFI mode ,PPC-3100-RE9A		
Related Product	PPC-3100-RE9A		

■ **Problem Description:**

Yellow marks found in device manager while running Win10 LTSP on PPC-3100-RE9A.

■ **Brief Solution :**

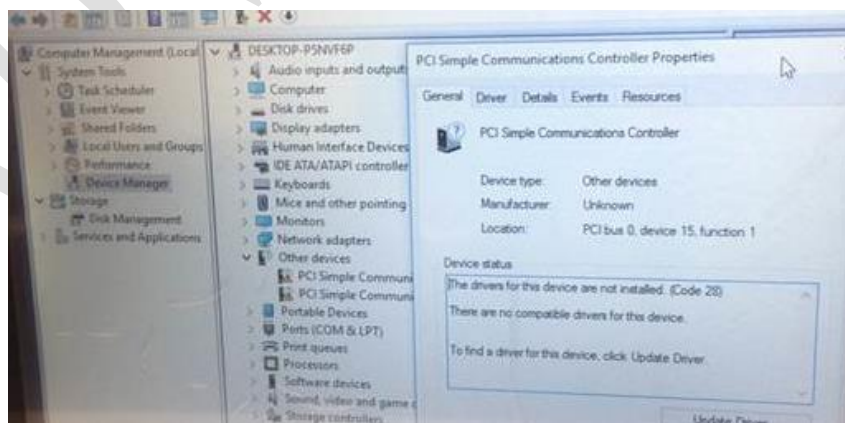
PPC-3100-RE9A only supports Win10 LTSP in UEFI mode.

If the CSM module in BIOS being adjusted manually, there will show two “PCI Simple Communication Controller” with yellow mark in device manager (fig.1).

To solve this problem, please refer to following suggestion:

1. Restore the BIOS setting to default value as UEFI mode. Then save changes and reset.
2. Reinstall the OS and all drivers from [support site](#).

After reinstall the OS, the yellow marks will disappear in device manager.



(Fig.1)