

EKI-122xR Port Forwarding SOP

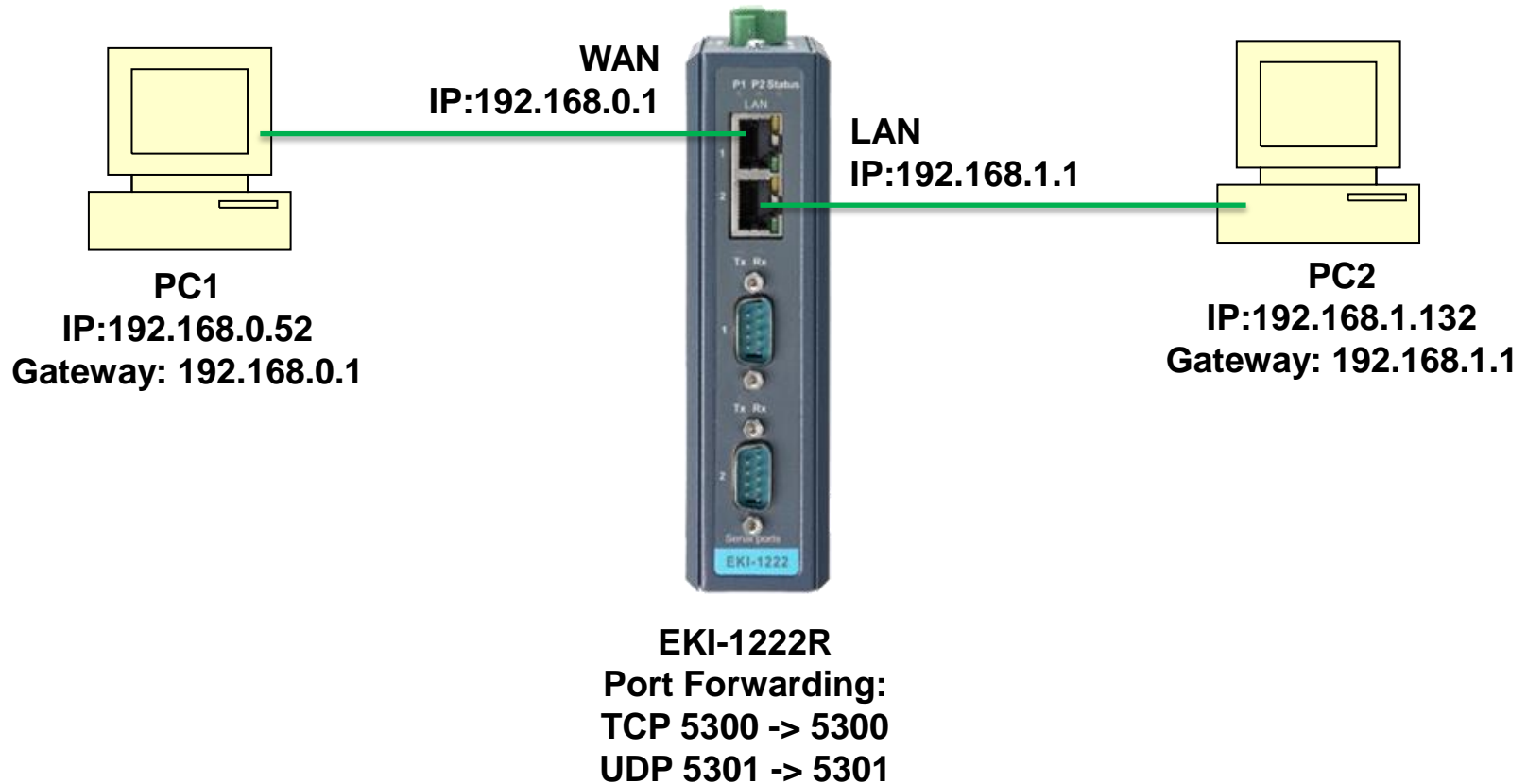
Revision Date	Revision	Description	Author
May/2019	V1.0	Initial release	ICG AE Jacky.Lin

Abstract

- ❖ **This SOP explains how to configure the EKI-122xR for Port Forwarding.**
- ❖ **Related products:**
EKI-122xR series
- ❖ **Requirement:** EKI-122xR series

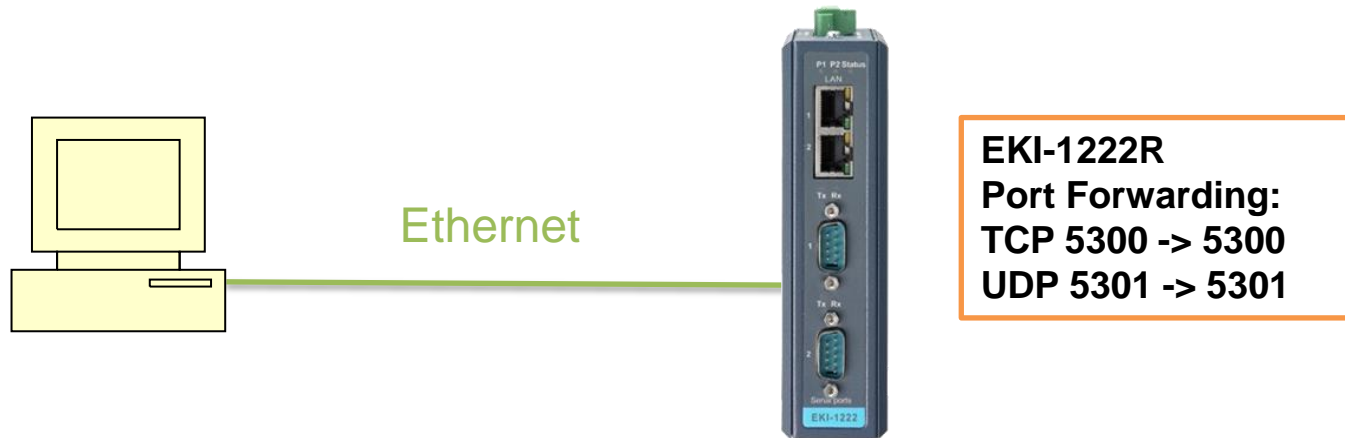


Topology



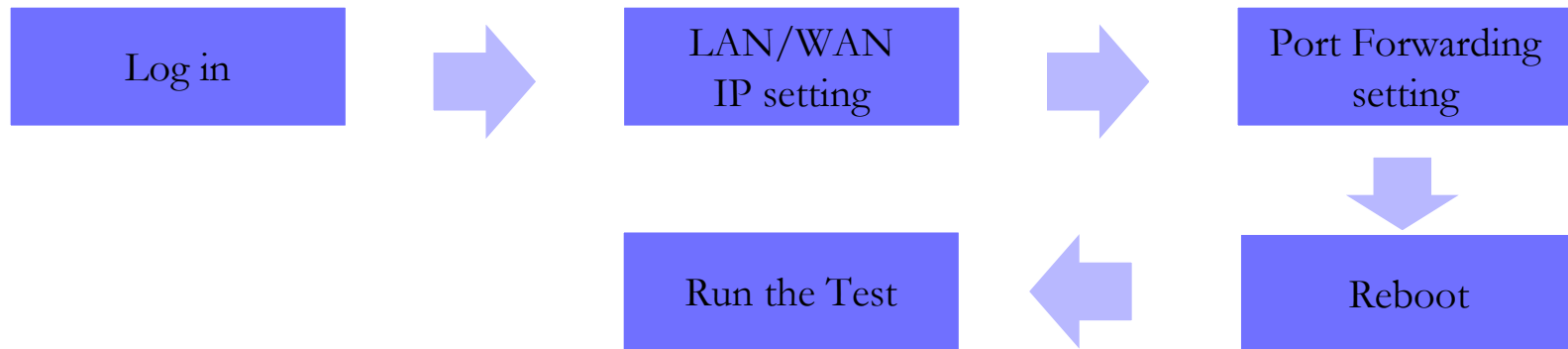
Setting flow chart

EKI-1222R



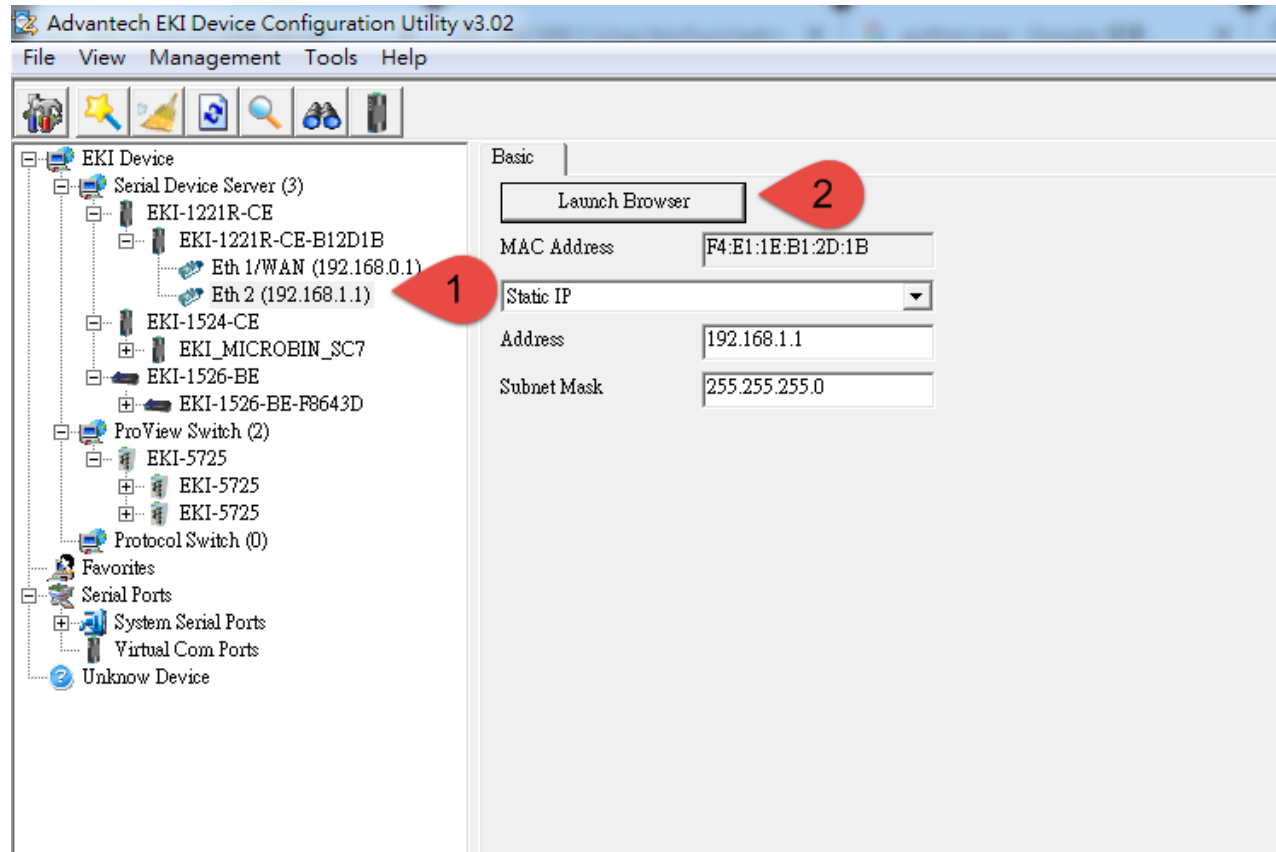
Step 1 :Connect the EKI-1222 LAN port via Ethernet cable

Step 2 : follow the flow chart to set up EKI-6332 step by step.



Log in

- Scan the device and Log in by browser



LAN / WAN IP setting (1/2)

- Set the LAN IP & mask

The screenshot shows the Advantech web interface for an EKI-1221R-CE Modbus Router. The left sidebar contains a menu with the following items: Overview, LAN and DHCP (highlighted with a red circle 1), WAN, VPN Passthrough, Port Configuration, OpenVPN, Filter, Port Forward, QoS, Static Routes, Diagnostics, Status, and Management. The main content area is titled 'LAN' and contains the following settings:

- IPv4 Address:** 192.168.1.1
- IPv4 Netmask:** 255.255.255.0 (highlighted with a red circle 2)
- DHCP Server:** ☒ Enabled ☐ Disabled
 - Start:** 100
 - Limit:** 150
 - Leasetime:** 12 Hours
- DNS Strict-order:** ☐ Enabled ☒ Disabled
- Custom Primary DNS Server:** DNS Server
- Custom Secondary DNS Server:** DNS Server
- Apply:** (highlighted with a red circle 3)

LAN / WAN IP setting (2/2)

- Set the WAN IP & mask

ADVANTECH EKI-1221R-CE Modbus Router

Home / WAN

WAN

Protocol: static IP

IPv4 Address: 192.168.0.1

IPv4 Netmask: 255.255.255.0

IPv4 Gateway: 192.168.0.254

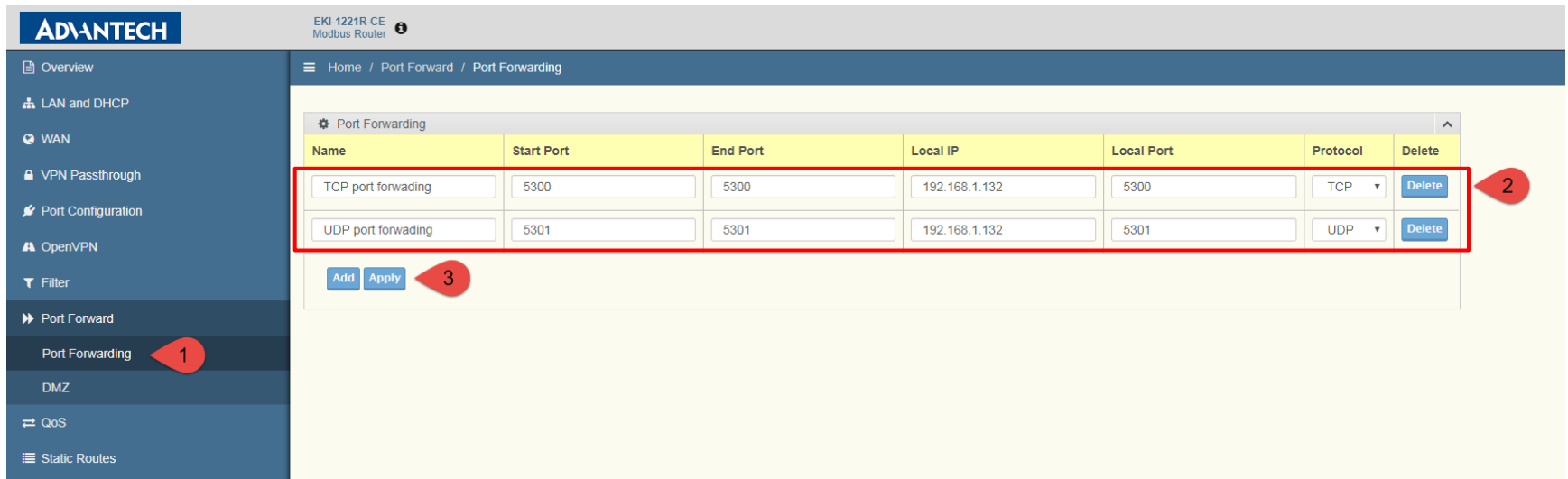
Custom DNS Server 1: DNS Server

Custom DNS Server 2: DNS Server

Apply

Port Forwarding Setting

- Set the Port forwarding as following



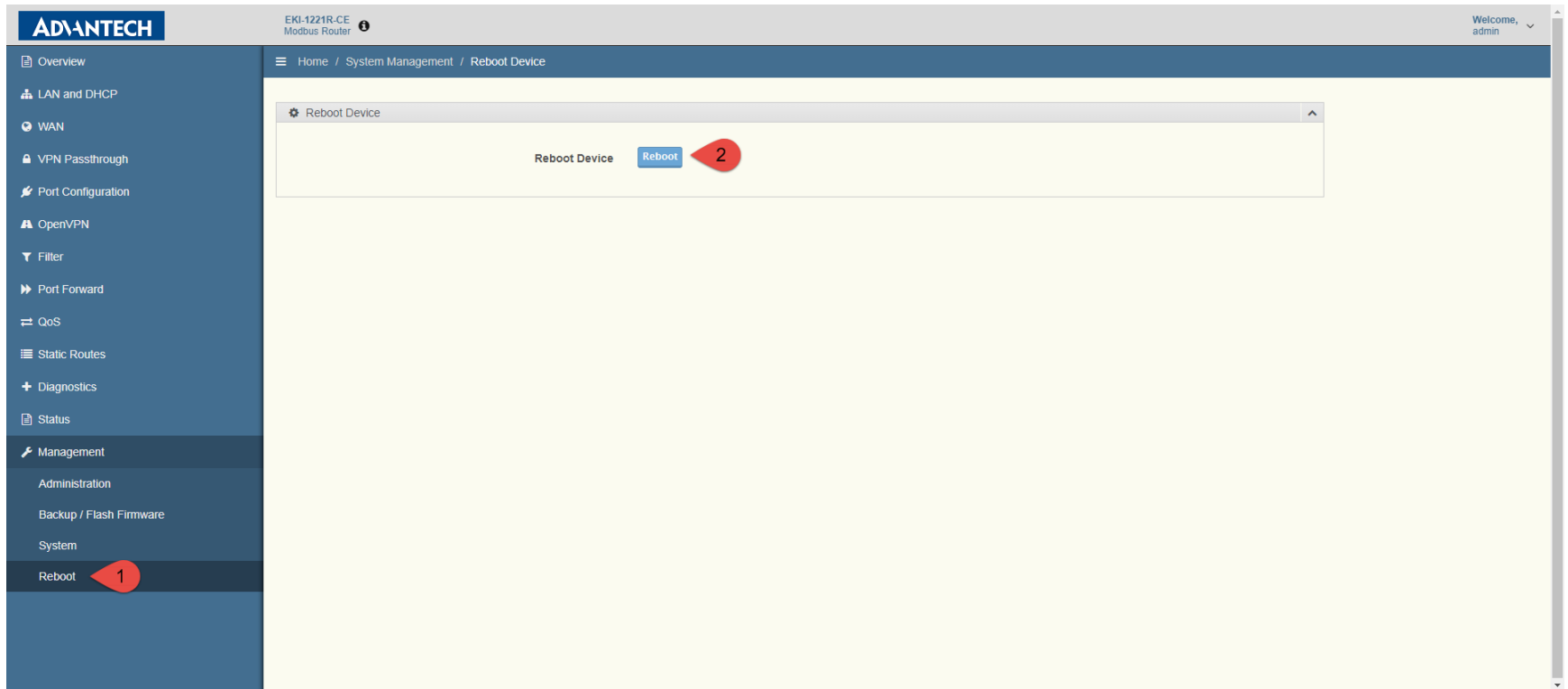
The screenshot displays the Advantech web interface for the EKI-1221R-CE Modbus Router. The left sidebar contains a menu with the following items: Overview, LAN and DHCP, WAN, VPN Passthrough, Port Configuration, OpenVPN, Filter, Port Forward, Port Forwarding (highlighted with a red callout 1), DMZ, QoS, and Static Routes. The main content area shows the 'Port Forwarding' configuration page, with a breadcrumb trail: Home / Port Forward / Port Forwarding. A table titled 'Port Forwarding' lists the following rules:

Name	Start Port	End Port	Local IP	Local Port	Protocol	Delete
TCP port forwarding	5300	5300	192.168.1.132	5300	TCP	Delete
UDP port forwarding	5301	5301	192.168.1.132	5301	UDP	Delete

Below the table are 'Add' and 'Apply' buttons (highlighted with a red callout 3). A red callout 2 points to the table of rules.

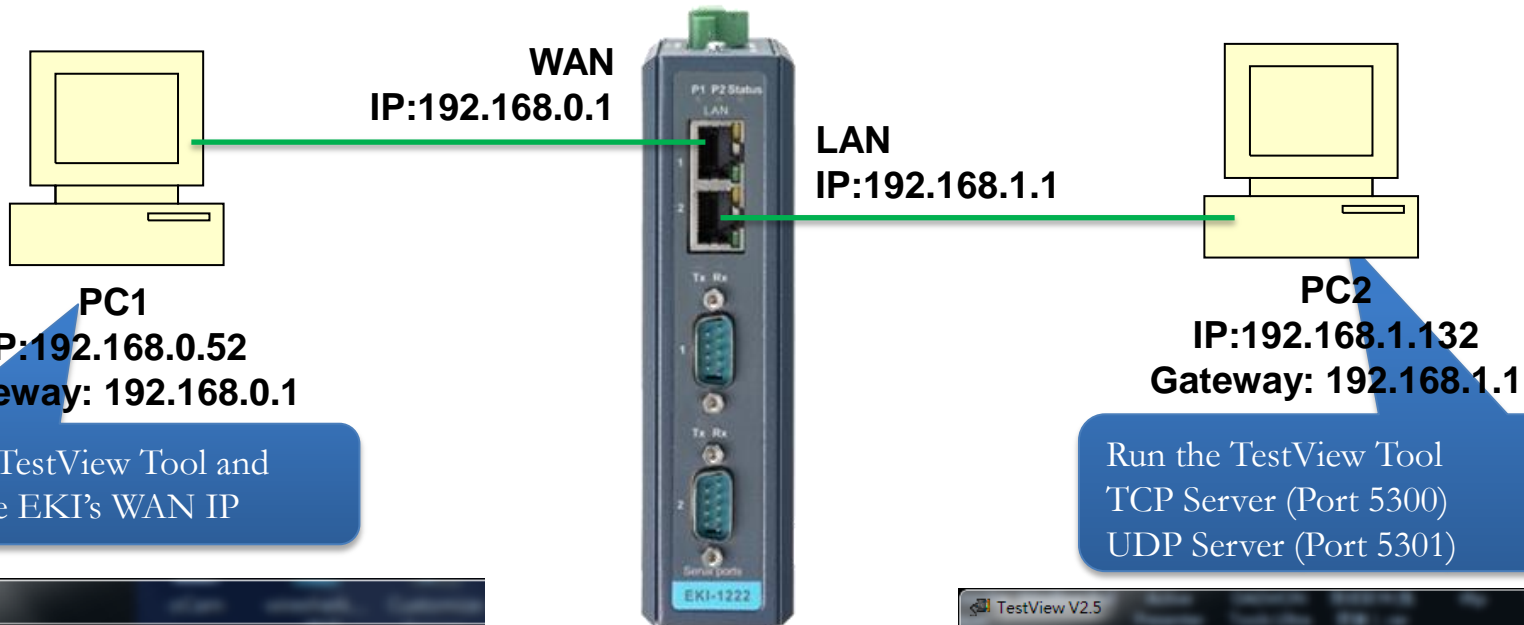
Reboot

- Reboot the device



Run the Test

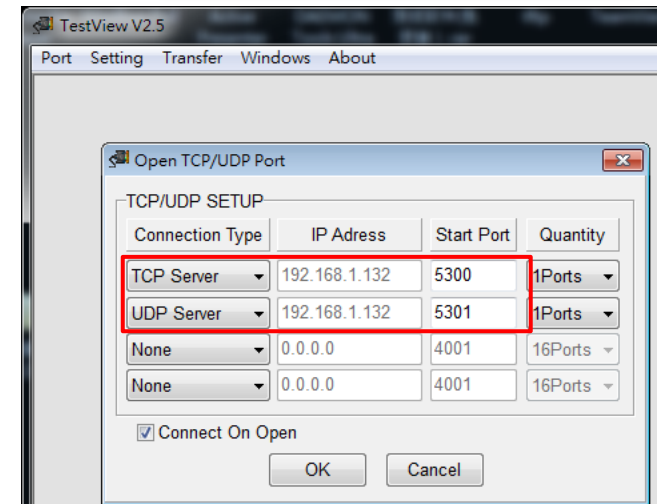
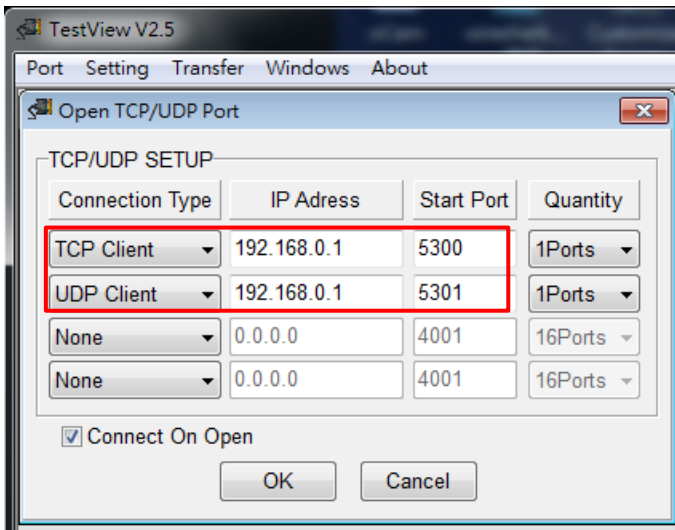
Testing Topology



Run the TestView Tool and target the EKI's WAN IP

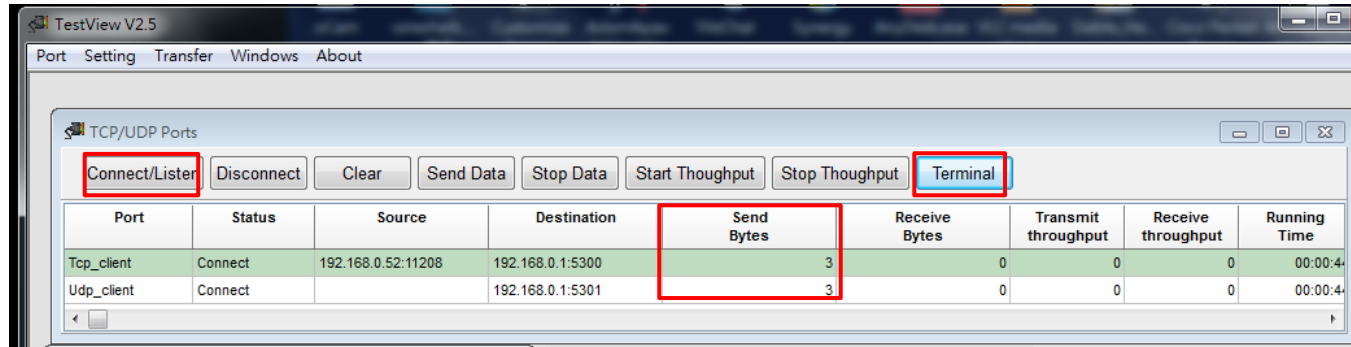
Run the TestView Tool
TCP Server (Port 5300)
UDP Server (Port 5301)

EKI-1222R
Port Forwarding:
TCP 5300 -> 5300
UDP 5301 -> 5301

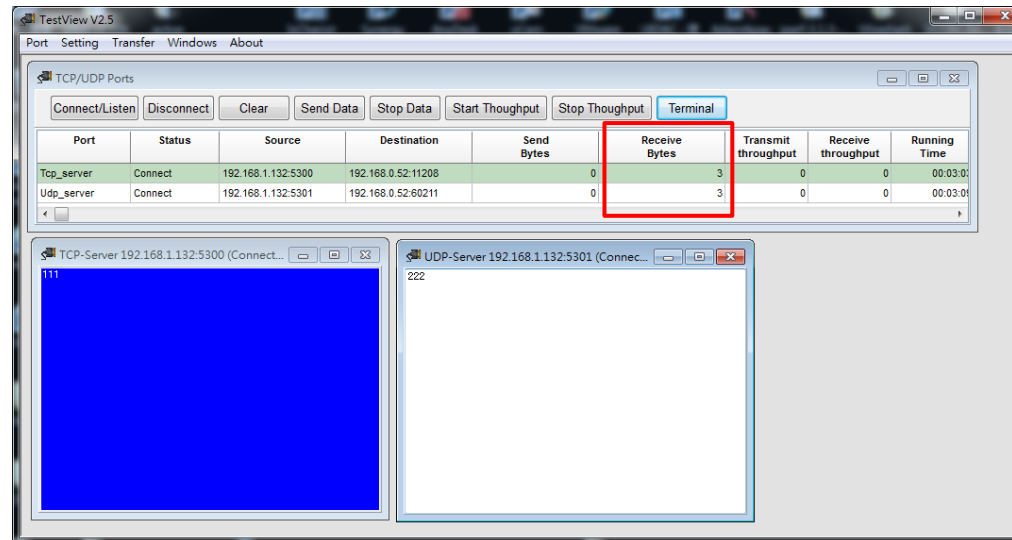


Run the Test

- Click “connect” and send the data from PC1



- See the PC2 receive the data





Enabling an Intelligent Planet

Trusted ePlatform Services

ADVANTECH