

# Advantech SE Technical Share Document

Date	2019 / 03 / 03	Related Product	WebAccess/HMI Runtime	
Category	■ FAQ □ SOP □ Driver Tech Note			
Abstract	How to install the WebAccess HMI Runtime and how to activate and revoke the license key			
Keyword	WebAccess/HMI Runtime			
Related OS	Windows 7 8 10			
Revision History				
Date	Version	Author	Reviewer	Description
2018/11/20	V1.0			

## ■ Problem Description & Architecture:

How to install the WebAccess HMI Runtime and how to activate and revoke the license key

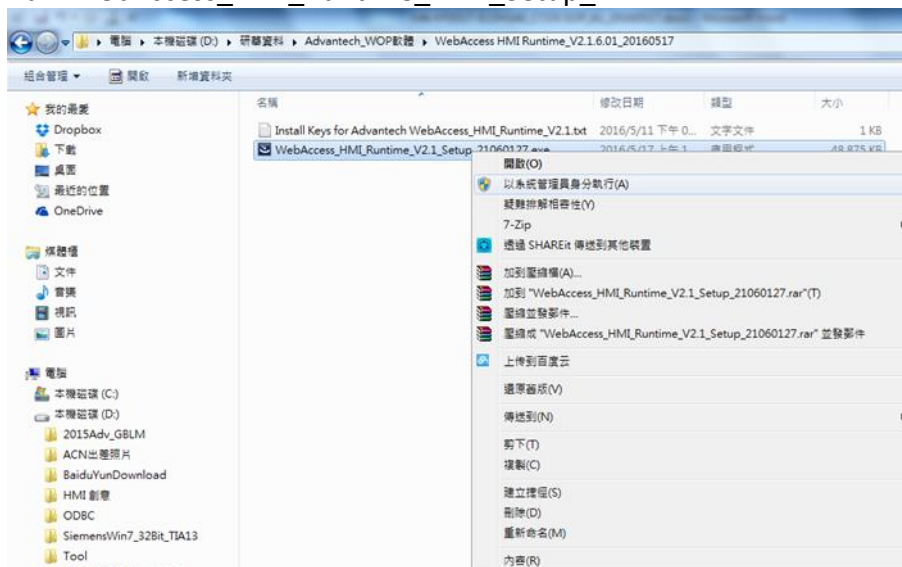
WebAccess/HMI software download path:

[https://support.advantech.com/support/DownloadSRDetail\\_New.aspx?SR\\_ID=1-F6UG0T&Doc\\_Source=Download](https://support.advantech.com/support/DownloadSRDetail_New.aspx?SR_ID=1-F6UG0T&Doc_Source=Download)

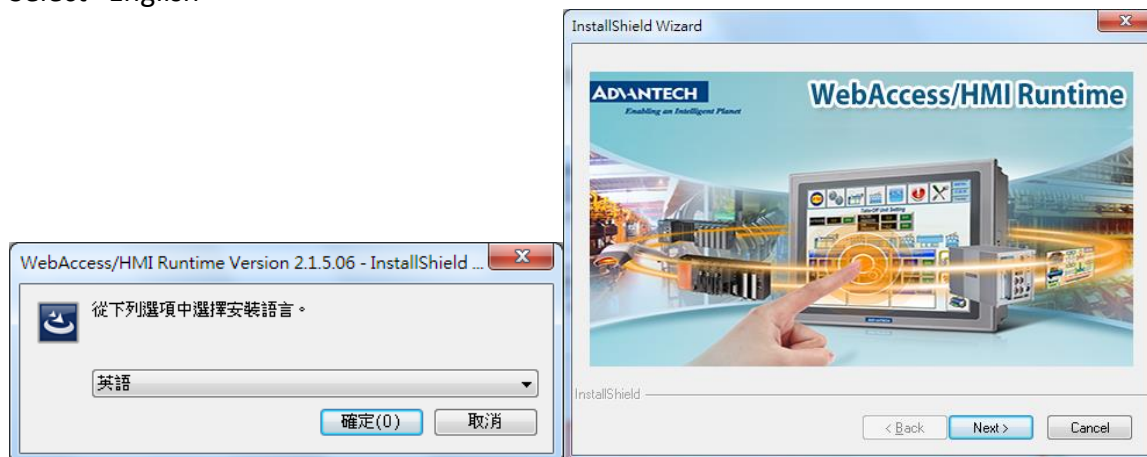
## ■ Brief Solution - Step by Step:

### 1. WebAccess/HMI Runtime install step

Run "WebAccess\_HMI\_Runtime\_V2.1\_Setup\_xxxxxxxx"



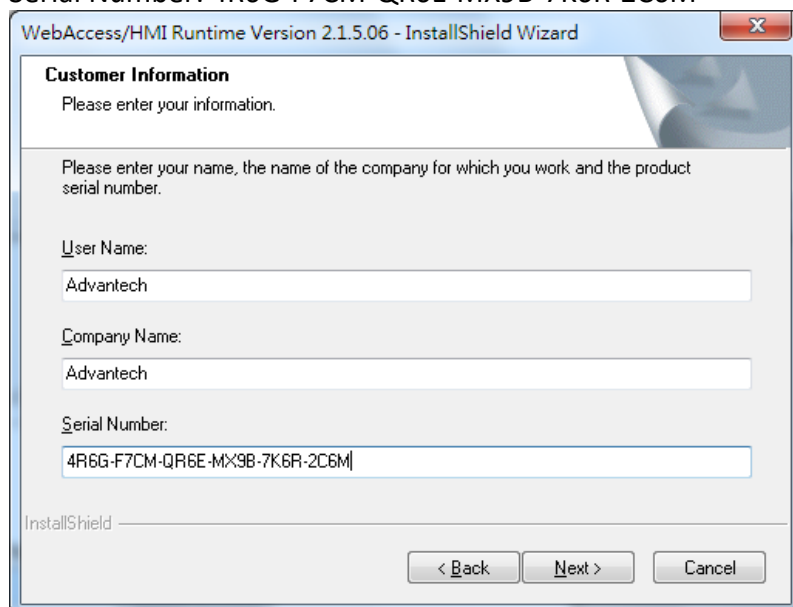
Select "English"



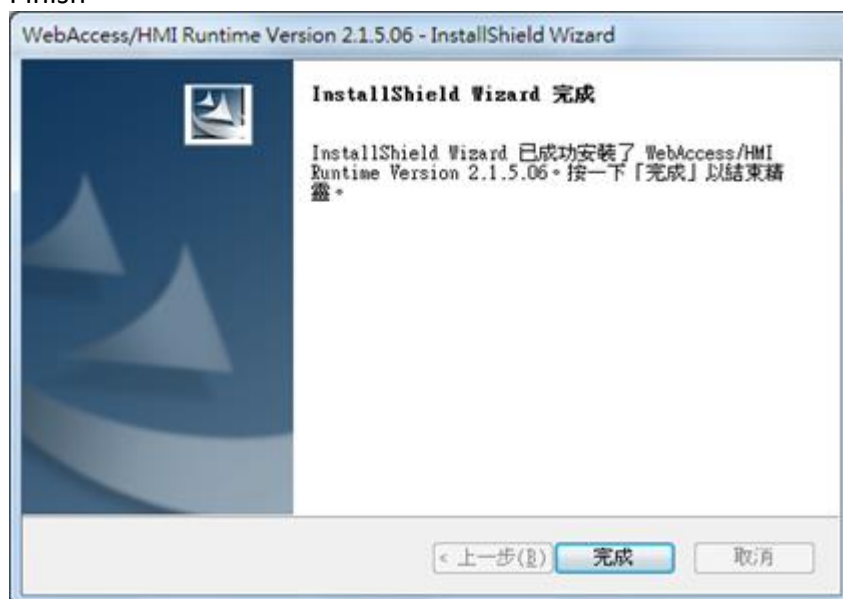
User name: Advantech

Company name: Advantech

Serial Number: 4R6G-F7CM-QR6E-MX9B-7K6R-2C6M



Finish



## 2. WebAccess/HMI Runtime serial number activates.

Run WebAccess/HMI Runtime



Select "Help"



Select Activate/Recover



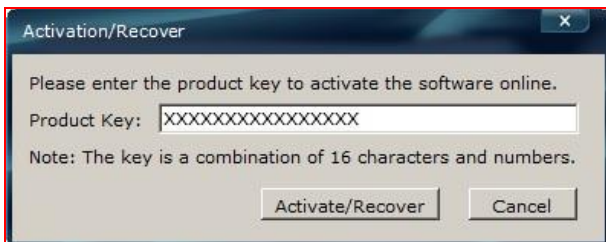
Please confirm use target HMI runtime workstation IPC must link to "Internet"

Activate/Recover: activate product key.

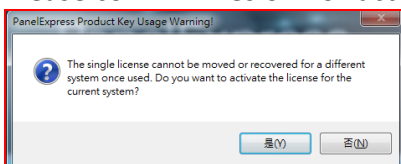
Buy a WebAccess/HMI Runtime Product Key, and enter Key number to product key space.

Click "Activate/Recover" button.

(Confirm again you have internet ability because the registration will be verified on server)



Please confirm "Yes or No" activate the product license.

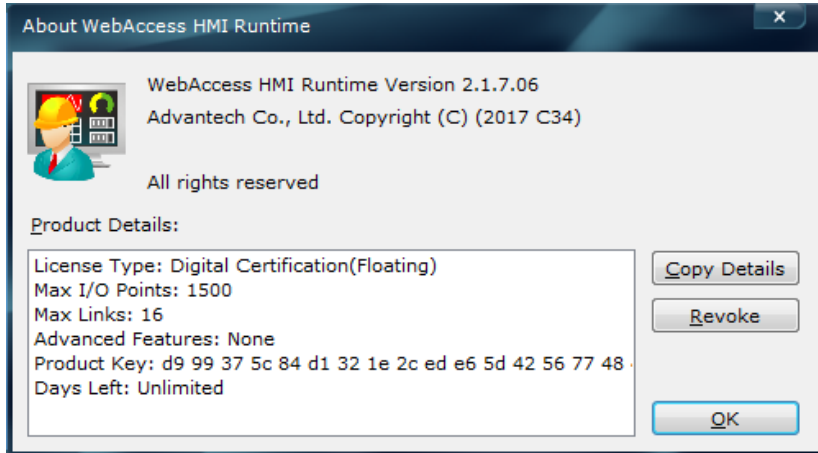


Please confirm the Max I/O points if it's correct according to your KEY.

License type: Digital Certification

Max I/O Point: 1500

Max Links: 16



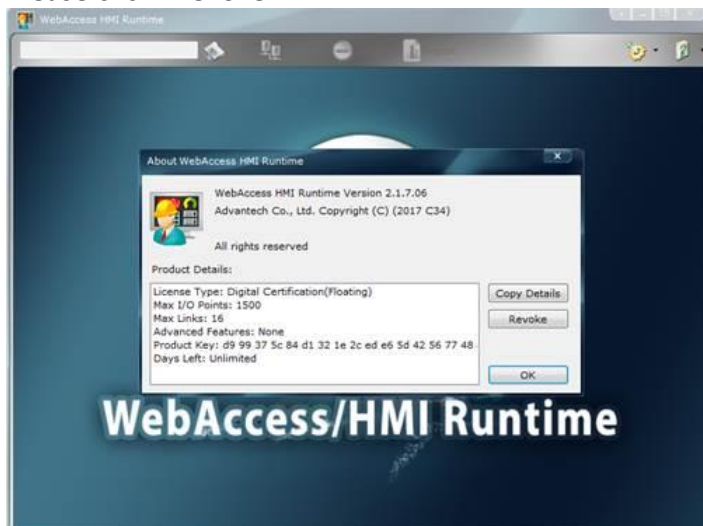
### 3. WebAccess/HMI Runtime serial number revokes

Please confirm use target HMI runtime workstation IPC must link to "Internet"

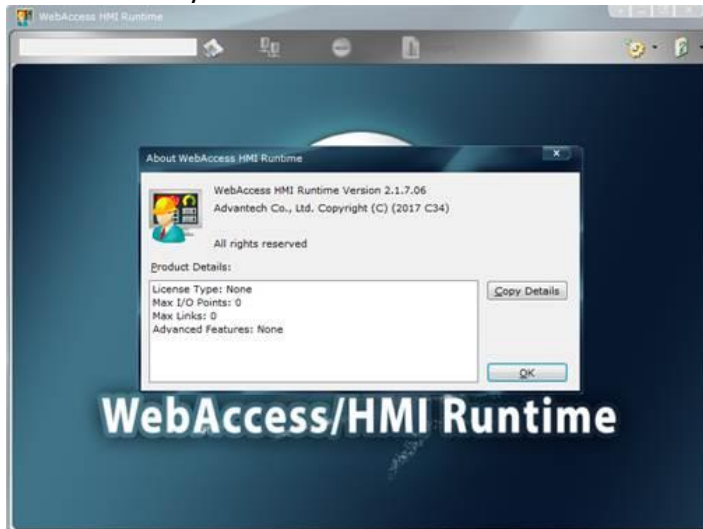
Please click "Help" and "About WebAccess HMI Runtime..."



Please click "Revoke"



The license key is canceled.



- **Pin Definition (in case of serial connection):**
- **Reference:**