

# Advantech SE Technical Share Document

Date	2019 / 07 / 24	Related Product	WebAccess/SCADA V8.4.1	
Category	<input checked="" type="checkbox"/> FAQ <input type="checkbox"/> SOP <input type="checkbox"/> Driver Tech Note			
Abstract	To upload a file to a FTP Server by using FTPC driver			
Keyword	WebAccess/SCADA, FTPC			
Related OS	Win7, Windows Server 2008 / 2012 / 2016, Win10			
Revision History				
Date	Version	Author	Reviewer	Description
2019/07/20	V1.0	Alger Tan		
2019/09/04	V2.0	Alger Tan		Add notes
2019/10/01	V2.0		Nick Liu	

## ■ Problem Description & Architecture:

The purpose of this FAQ is to describe how user can upload a file to FTP server by using WebAccess/SCADA FTPC driver.

Here we will use Advantech FTP Server as an example

- Advantech FTP server: <ftp.advantech.com.tw>
- Password: \*\*\*\*\* ( is hidden)

## Scenario:

User plans to upload a “manage.asp” file from C drive to test folder in Advantech FTP server.

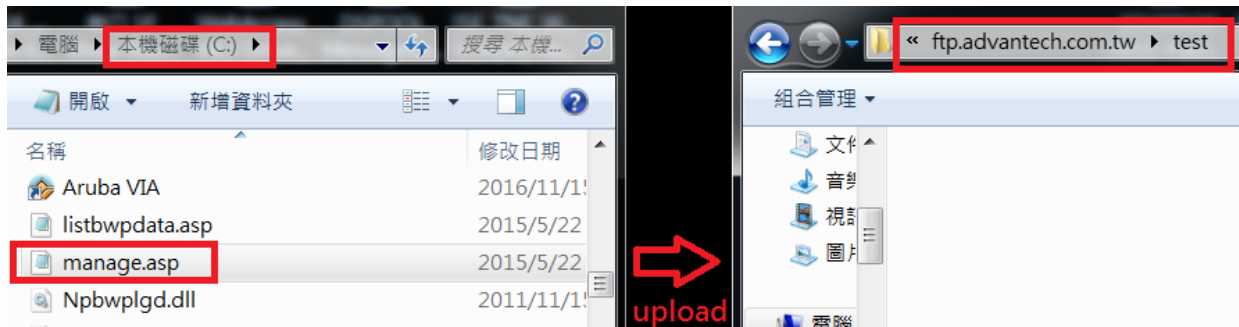


Figure 1: a file prepares to upload to FTP Server

## Expected Result:

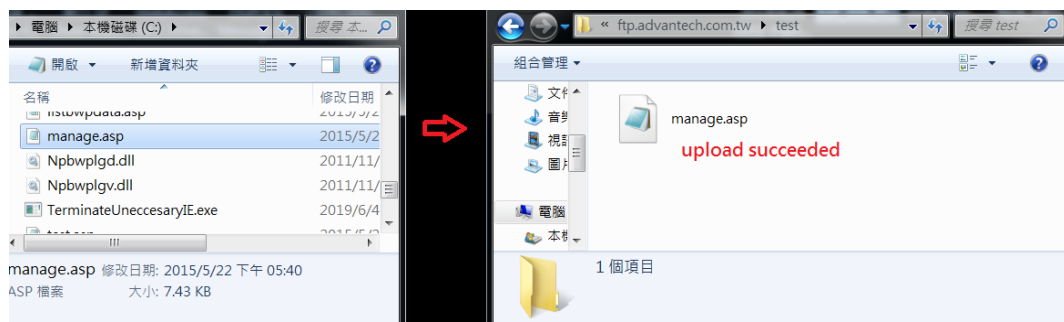
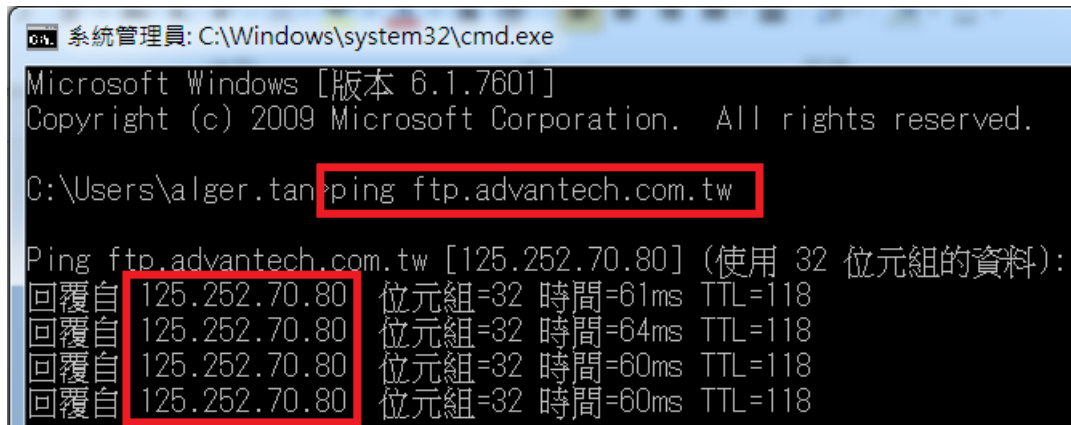


Figure 2: upload completed

### ■ Brief Solution - Step by Step:

1. Find out Advantech FTP Server IP address by using DOS ping command.  
User has to enter FTP Server IP address because FTPC driver doesn't support URL.



**Figure 3:** find out FTP Server IP address

2. Based on ping result, the IP address for Advantech FTP server is 125.252.70.80
3. Create a WebAccess project:  
Comport Configuration: select API in Interface Name.

Update Comport		[Cancel]	Submit
Interface Name	API		
Comport Number	1		
Description	Description		
Scan Time	1 <input type="radio"/> MilliSecond <input checked="" type="radio"/> Second <input type="radio"/> Minute <input type="radio"/> Hour		
Timeout	1000 MilliSecond		
Retry Count	3		
Auto Recover Time	60 Second		

**Figure 4:** API Comport

4. Device Configuration:
  - **Device Name:** ftp (any name)
  - **Device Type:** FTPC
  - **Passive mode:** 1
  - **IP:Port:** 125.252.70.80:21 (FTP Server IP address: FTP Server port number)
  - **Username: password:** IAG.AE.FTP: xxxxxxxx

Device Property		[Cancel]	Submit
Device Name	ftp		
Description			
Unit Number	0		
Device Type	FTPC ▼		
Passive mode (1:enable,0:disable) =	1		
IP:Port =	125.252.70.80:21		
Username:passowrd =	IAG.AE.FTP:xxxxxxxxx x		

**Figure 5:** select FTPC in Device Type

Note: IP:Port must enter **FTP Server IP address with port number**. It doesn't allow entering the URLs

- Acceptable: 125.252.70.80:21
- Not Acceptable: <ftp://ftp.advantech.com.tw>

5. Tag Configuration:

To add tags, we recommended using block.

Click "Add Block"

Delete	Add Tag	Add Block
Device Property		

**Figure 6:** Add Block

New Block Configuration:

- Block Type: FtpBlk (by default)
- Block Name: ftp (any name user prefers)
- Offset: 0

Create New Block	
Block Type	FtpBlk ▼
Block name	ftp
Description	
Offset	0 x

**Figure 7:** New Block Configuration

## 6. 18 tags will be created

<div>Project/Node</div> <div>ftp</div> <div>scada</div> <div>Port1 (api)</div> <div>ftp</div> <div>Device Driver</div> <div>A101</div> <div>ABMLGX</div> <div>ABPLC5</div> <div>ABPLCEIP</div> <div>ABSLC5</div> <div>AceFAM3</div> <div>ADAM2K</div> <div>ADAM4K</div> <div>ADAM5560</div> <div>ADAM5KASC</div> <div>ADAM5KE</div> <div>ADAM6K</div> <div>ADMIO</div> <div>AdvDAinfo</div> <div>AdvPAC</div> <div>AE6000</div> <div>Agi34972A</div> <div>AlienRFID</div>	<input type="checkbox"/>	ftp:LocaSize	A	::Local files size got from local path	local_size
	<input type="checkbox"/>	ftp:RemoSize	A	::Remote files size got from FTP server	remote_size
	<input type="checkbox"/>	ftp:DelLocaF	D	::Trigger to delete a local file	delete_local_flag
	<input type="checkbox"/>	ftp:DelRemoF	D	::Trigger to delete a remote file	delete_remote_flag
	<input type="checkbox"/>	ftp:DownLodF	D	::Trigger the FTP download	download_flag
	<input type="checkbox"/>	ftp:GetLocaF	D	::Trigger to get file list or dictionary list from a local	get_local_flag
	<input type="checkbox"/>	ftp:GetRemoF	D	::Trigger to get file list or dictionary list from a FTP	get_remote_flag
	<input type="checkbox"/>	ftp:UpLodF	D	::Trigger the FTP upload	upload_flag
	<input type="checkbox"/>	ftp:DLocFile	T	::Delete a local file. - name only	delete_local_file
	<input type="checkbox"/>	ftp:DownFile	T	::File name to save in a local file. - name only	download_file
	<input type="checkbox"/>	ftp:DRemFile	T	::Delete a file in FTP server. - name only	delete_remote_file
	<input type="checkbox"/>	ftp:LocaName	T	::Local files name got from local path	local_name
	<input type="checkbox"/>	ftp:LocaPath	T	::Local file path for the FTP download, upload,	local_path
	<input type="checkbox"/>	ftp:LocaTime	T	::Local files time got from local path	local_time
	<input type="checkbox"/>	ftp:RemoName	T	::Remote files name got from FTP server	remote_name
	<input type="checkbox"/>	ftp:RemoPath	T	::Remote FTP path for the FTP download, upload,	remote_path
	<input type="checkbox"/>	ftp:RemoTime	T	::Remote files time got from FTP server	remote_time
	<input type="checkbox"/>	ftp:UpFile	T	::File name to save in a remote file. - name only	upload_file

Figure 8: a block has 18 tags

## 7. Go to ViewDAQ Point Info after user downloads and starts the kernel.

Point Info

Tag Name: ftp:LocaPath

Description: ::Local file path for the FTP download, upload, delete, get

Tag Type: TEXT

Scan Type: CONSTANT SCAN

Port: 1 Unit: 0

Device Name: ftp

Address: local\_path

Value:

ftp:LocaPath

ftp:DelLocaF

ftp:DelRemoF

ftp:DLocFile

ftp:DownFile

ftp:DownLodF

ftp:DRemFile

ftp:GetLocaF

ftp:GetRemoF

ftp:LocaName

ftp:LocaPath

ftp:LocaSize

ftp:LocaTime

ftp:RemoName

ftp:RemoPath

ftp:RemoSize

ftp:RemoTime

ftp:UpFile

ftp:UpLodF

I/O Tag

ViewDAQ

Accumulation

Port 1

Port 4

Calculation

Port 2

Port 5

Constant

Port 3

Port 6

Goto

Change

Acknowledge

Exit

Figure 9: Point Info

8. Select "ftp:LocaPath" tag  
Click "change" button and enter "c:\\"

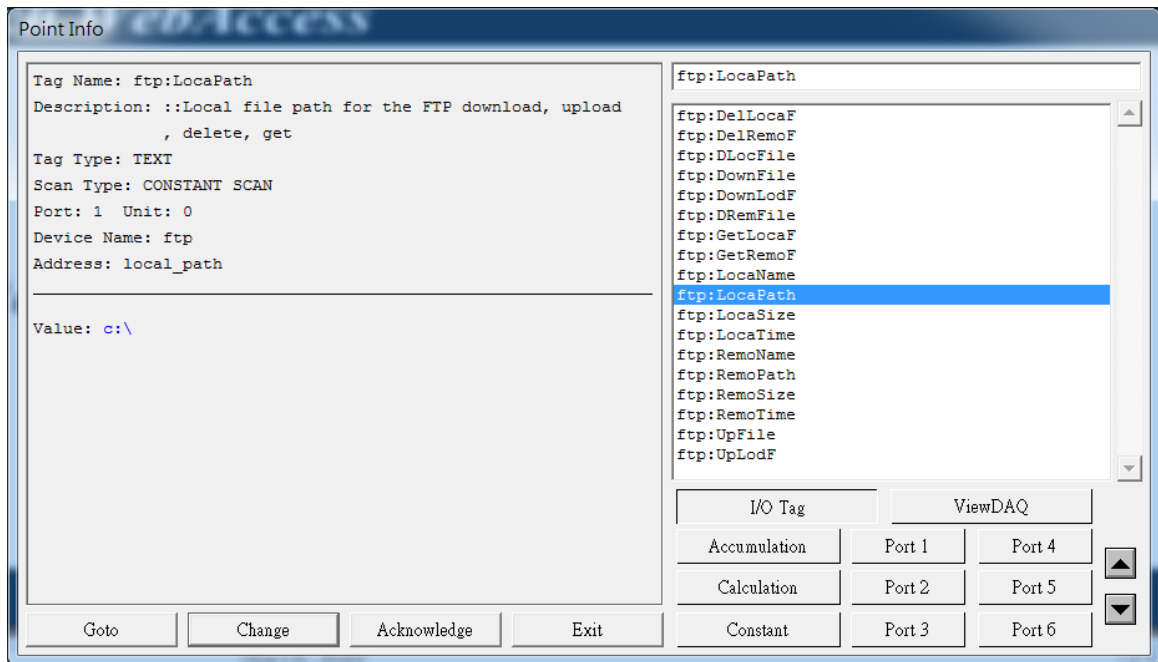


Figure 10: ftp:LocaPath tag

9. Select "ftp:RemoPath" tag  
Click "Change" button and enter "test"

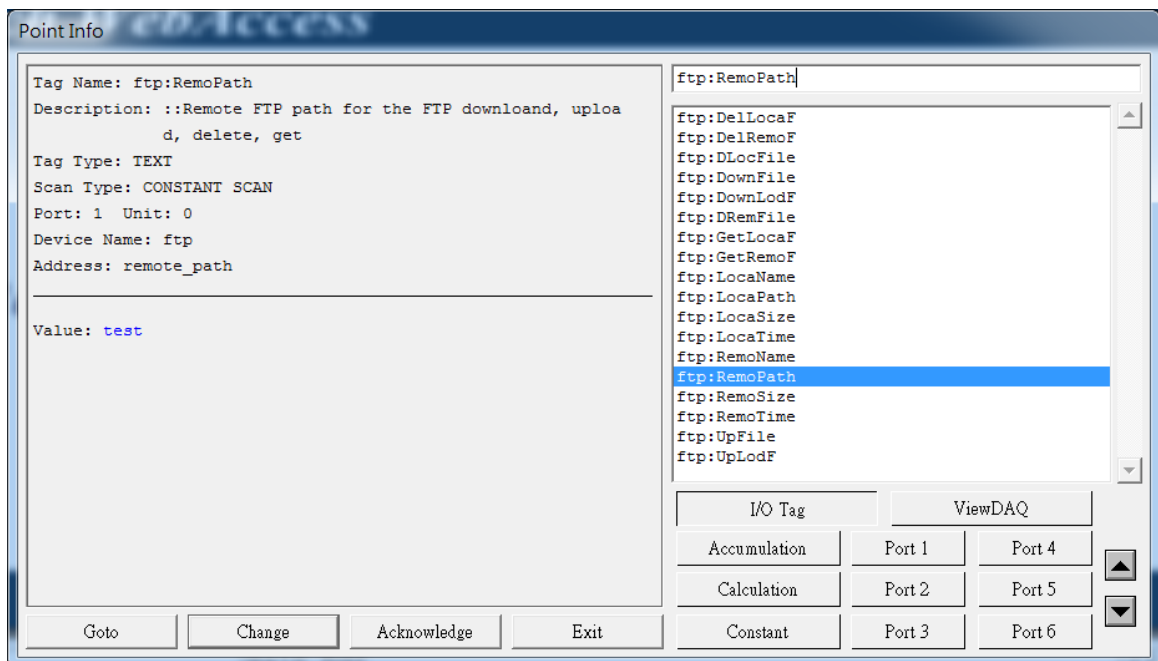


Figure 11: ftp:RemoPath tag

## 10. Select “ftp:GetLocaF” tag

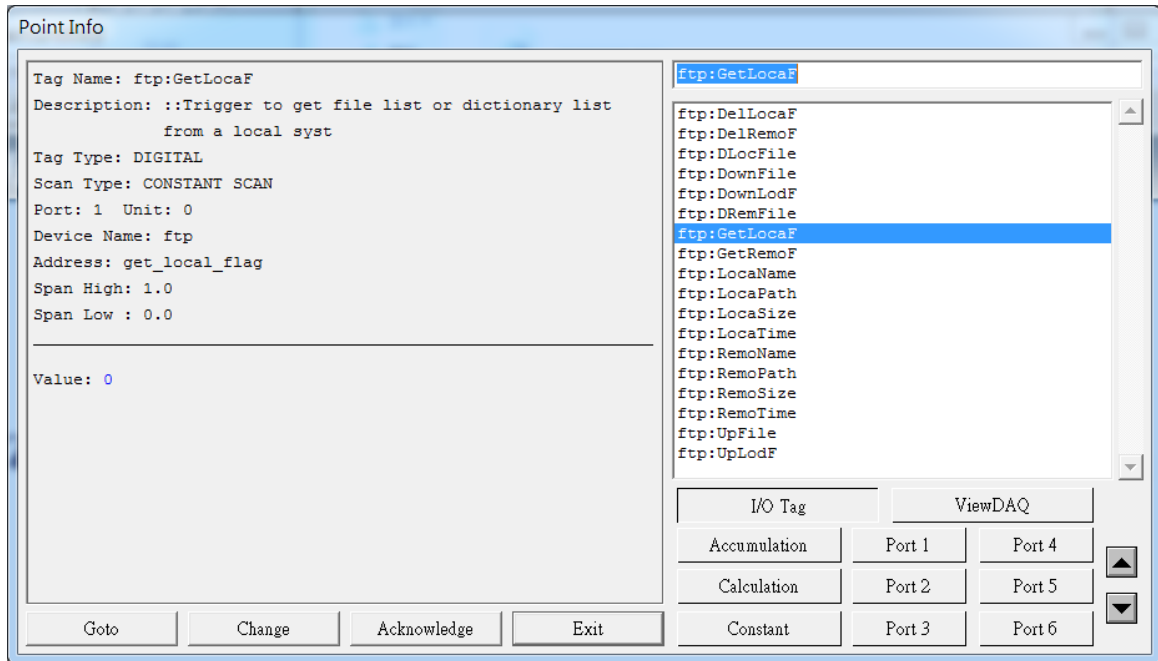


Figure 12: ftp:GetLocalF tag

Note: tag value will return to 0 after the file uploads to FTP server.

## 11. Select “ftp:GetRemoF” tag

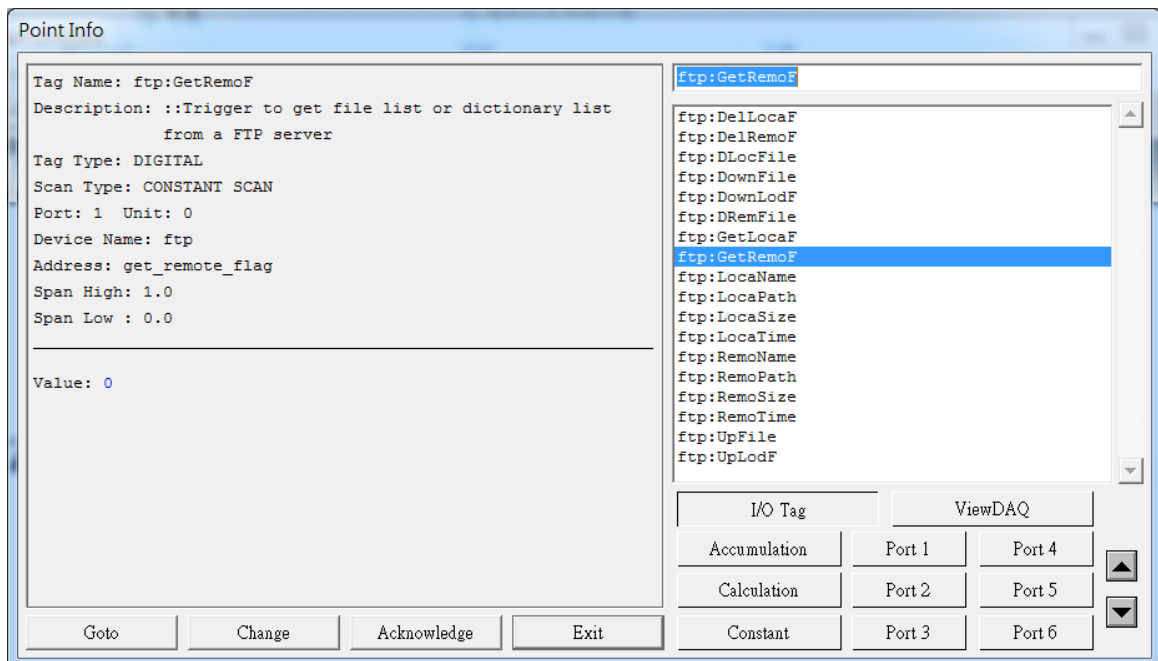


Figure 13: ftp:GetRemoF tag

Note: tag value will return to 0 after the file uploads to FTP server.

12. Select “ftp:UpFile” tag  
Click “Change” button and enter “manage.asp”

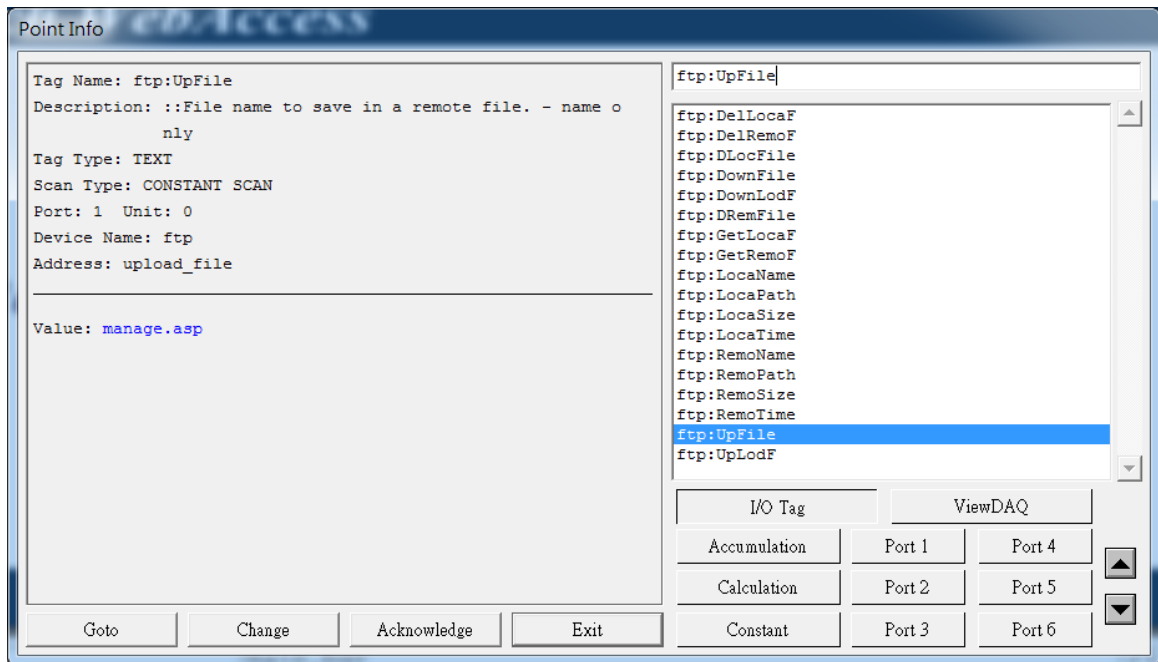


Figure 14: ftp:UpFile tag

13. select “ftp:UpLodF” tag  
Click “Change” and enter 1.

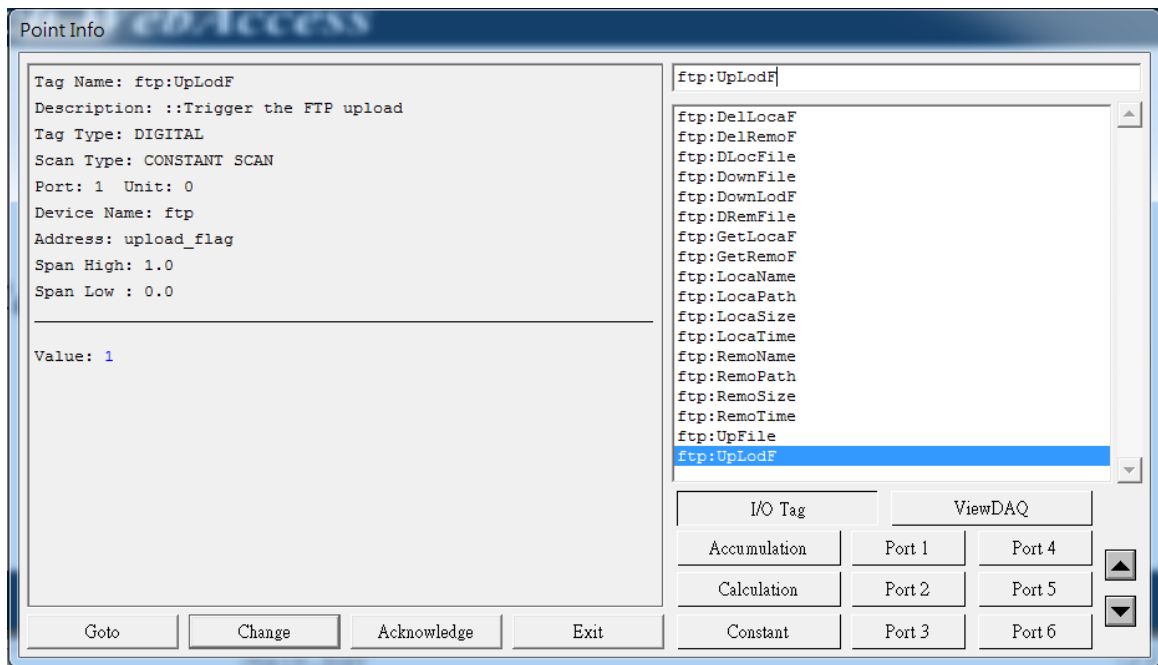


Figure 15: ftp:UpLodF tag

Note: tag value will return to 0 after the file uploads to FTP server.

## 14. Result:

The manage.asp file is successfully uploaded to “test” folder in Advantech FTP Server

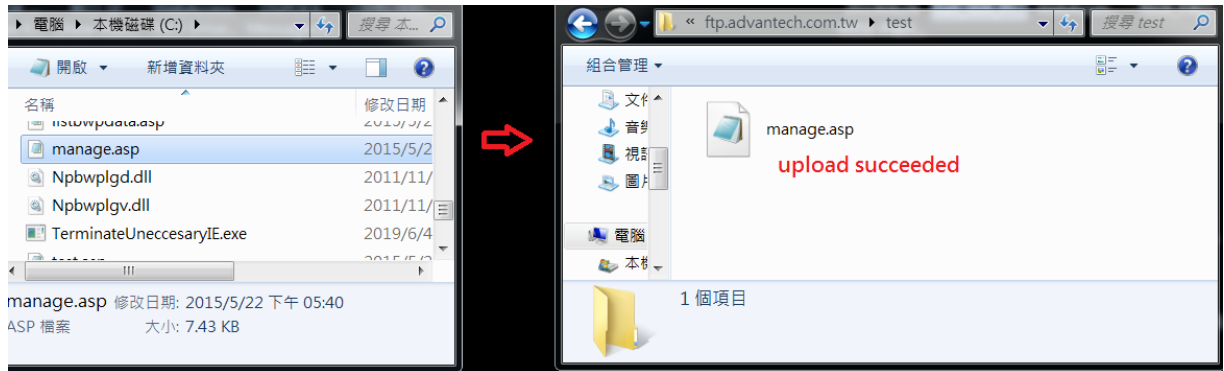
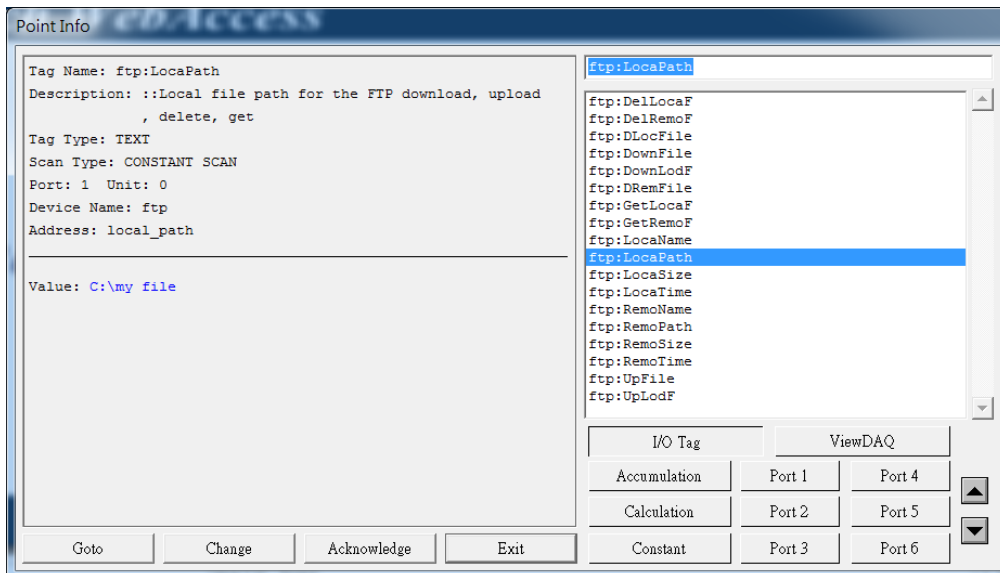


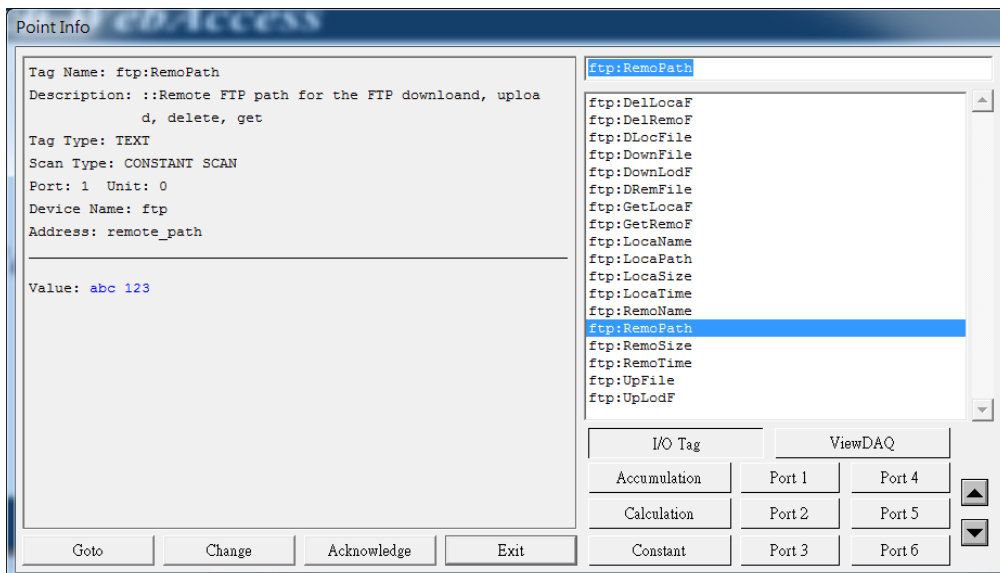
Figure 16: upload completed

## Notes:

1. ftp:LocaPath tag value allows to have space.

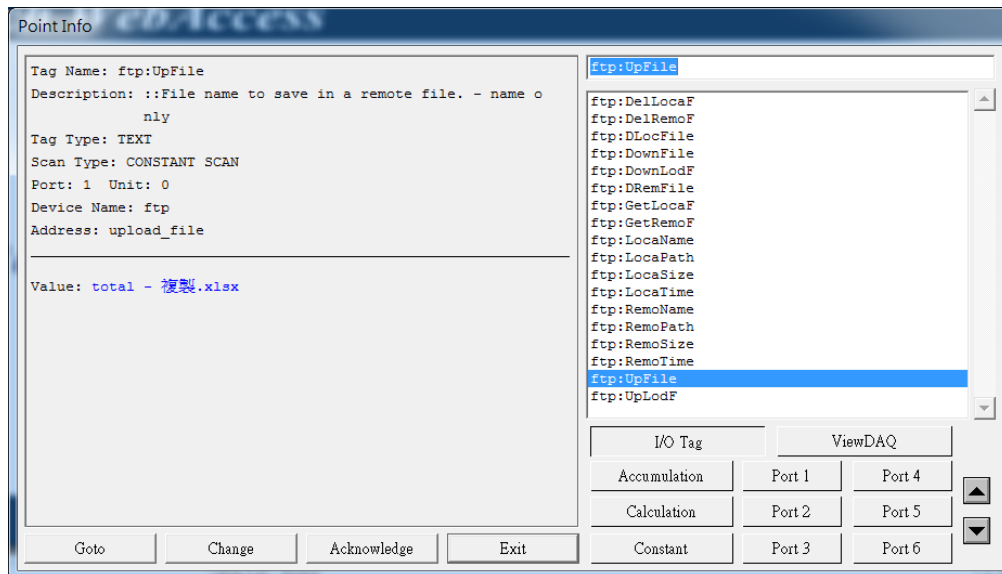


2. ftp:RemoPath tag value allows to have space.





### 3. ftp:UpFile tag value allows to have both space and Chinese word.



### 4. Result in FTP



### ■ Reference: