

## Advantech AE Technical Sharing Document

Date	2019 / 10 / 14	Release Note	<input type="checkbox"/> Internal <input checked="" type="checkbox"/> External
Category	<input checked="" type="checkbox"/> FAQ <input type="checkbox"/> SOP	Related OS	Windows CE
Abstract	How to set remote desktop between WinCE and other OS?		
Keyword	WOP-3000, WinCE, remote desktop		
Related Product	WOP-3120T, WOP-3100T, WOP-3070T.		

### ■ Problem Description:

There is a built-in utility in WinCE for remote control purpose.

But this utility is only used when WinCE as a server.

This document indicates the details about setting the configuration when using remote control function between WinCE platform and other device.

### ■ Brief Analysis and Solution :

Demo devices:

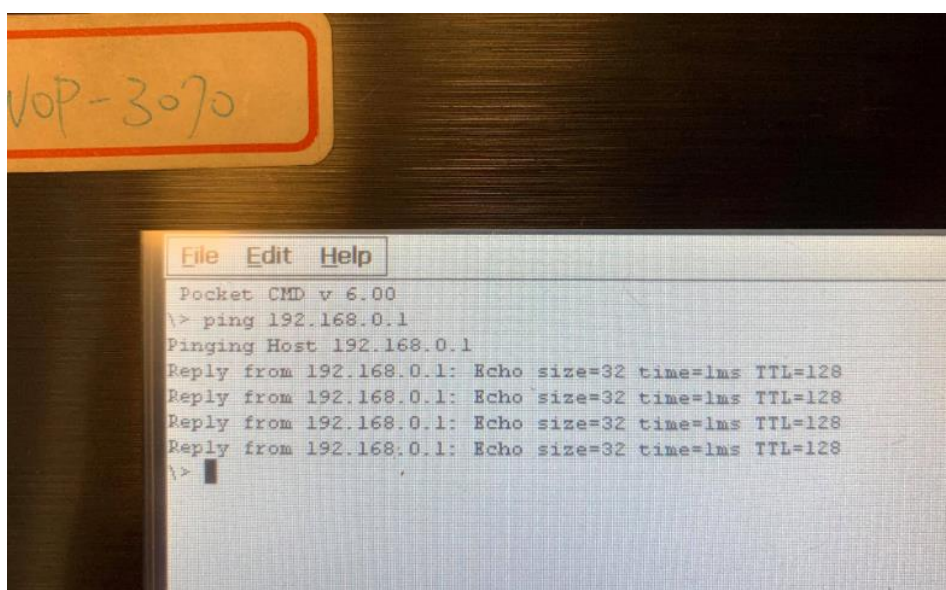
UNO-2372G running Win10

WOP-3070T running WinCE6

#### Part A. WinCE as a server to remotely access to Win10.

1. Make sure IP can be found by each device.

Check the connection from WinCE, ping Win10 (IP: 192.168.0.1)



2. Make sure IP can be found by each device.

Check the connection from Win10, ping WinCE(IP: 192.168.0.2)

```
C:\> Administrator: Command Prompt

Microsoft Windows [Version 10.0.17763.194]
(c) 2018 Microsoft Corporation. All rights reserved.

C:\Users\Administrator>ping 192.168.0.2

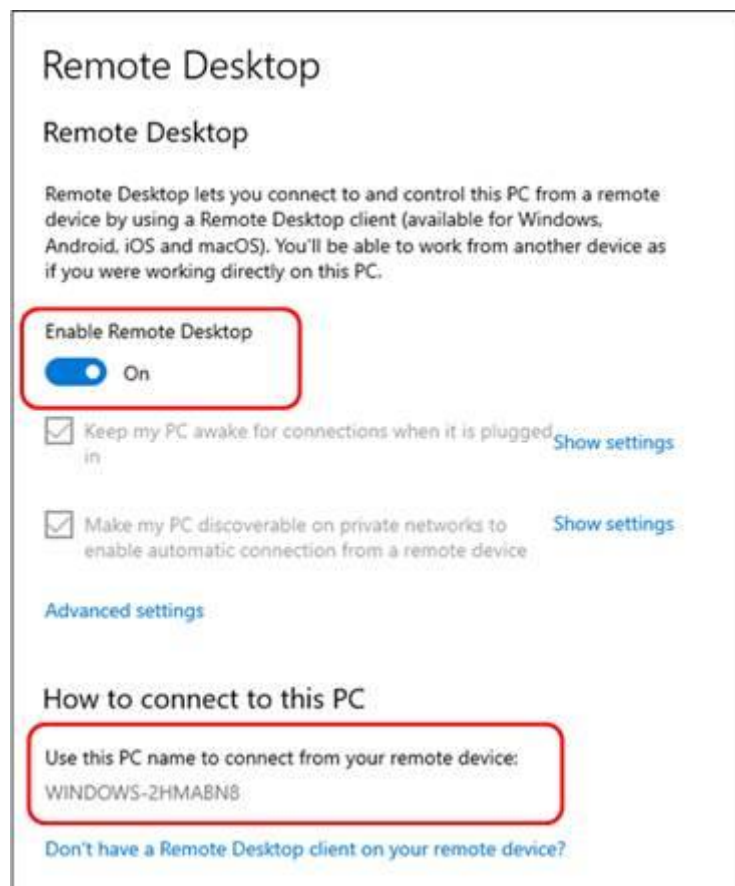
Pinging 192.168.0.2 with 32 bytes of data:
Reply from 192.168.0.2: bytes=32 time=1ms TTL=128
Reply from 192.168.0.2: bytes=32 time<1ms TTL=128
Reply from 192.168.0.2: bytes=32 time<1ms TTL=128
Reply from 192.168.0.2: bytes=32 time<1ms TTL=128

Ping statistics for 192.168.0.2:
    Packets: Sent = 4, Received = 4, Lost = 0 (0% loss),
    Approximate round trip times in milli-seconds:
        Minimum = 0ms, Maximum = 1ms, Average = 0ms

C:\Users\Administrator>
```

3. Check the user's account and computer's name of Win10 platform.

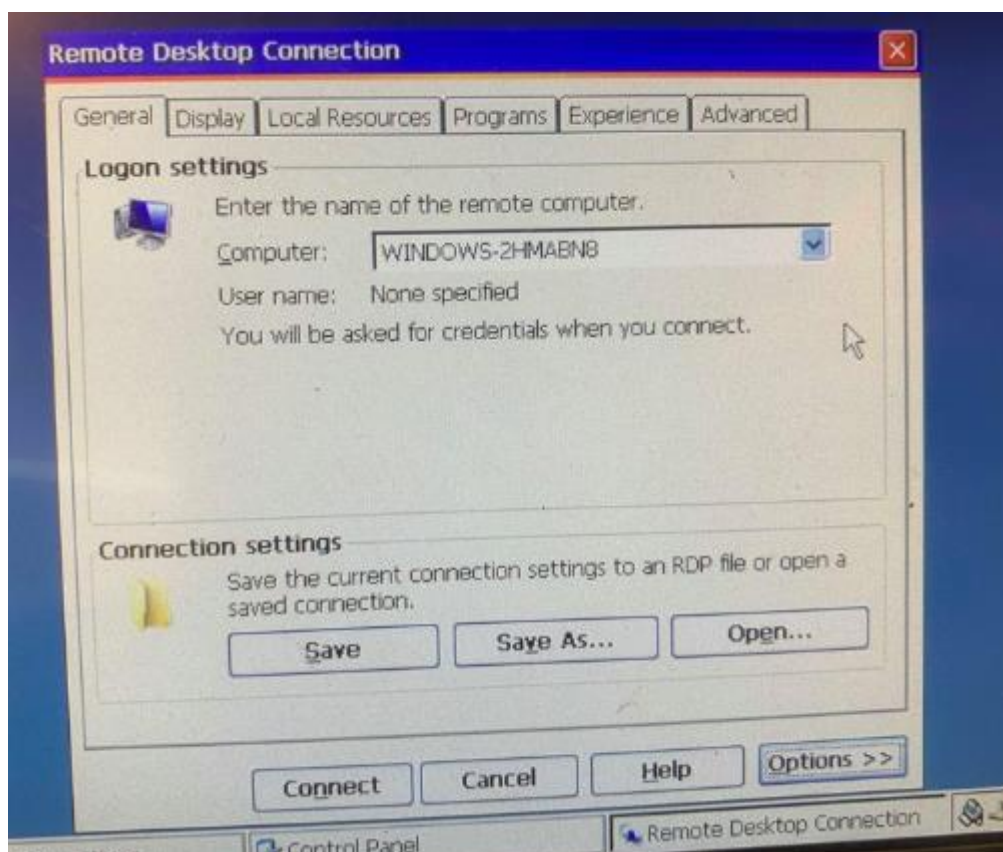
Meanwhile, enable to Remote Desktop function in Win10.



4. Back to WinCE, run the remote desktop utility.  
And input the computer's name of Win10 platform.



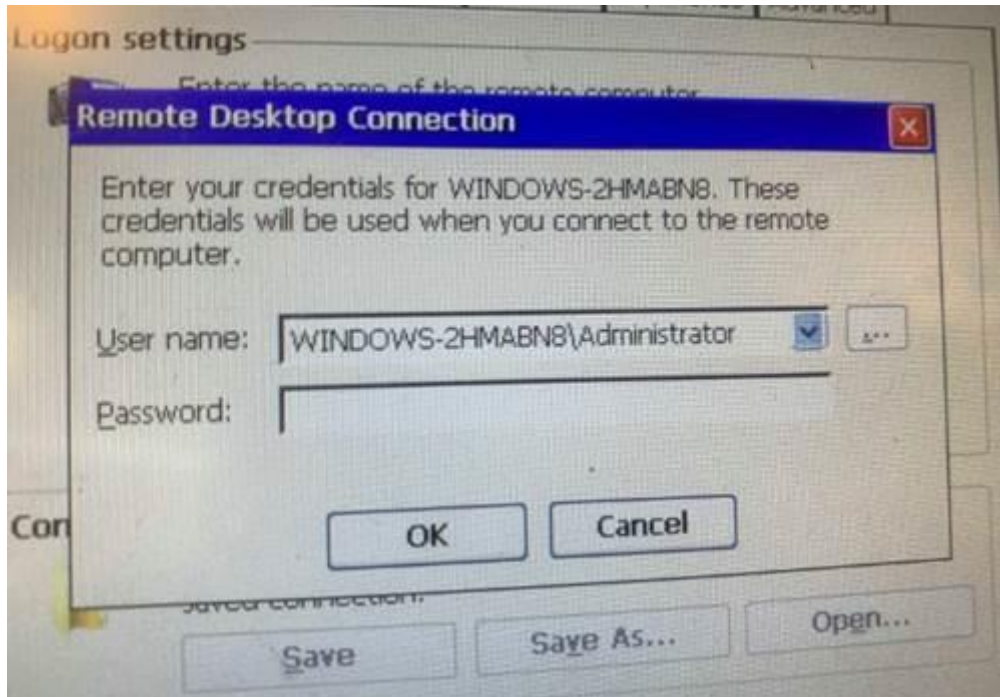
5. More detailed settings are available if you click the "options" button.



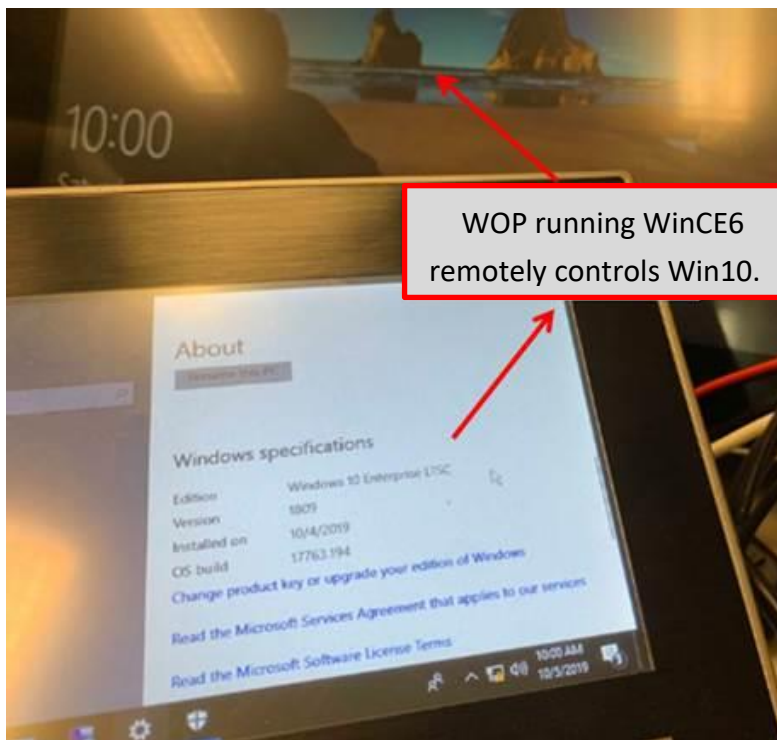
6. The diagram will pop up once you click the “connect” button.

The connection will be established after inputting correct user name and password.

Here we have user’s name as administrator and password as password for Advantech’s Win10 embedded OS.



7. This photo shows the testing scenario. We remotely connected Win10 OS on WOP-3070T which runs WinCE6.

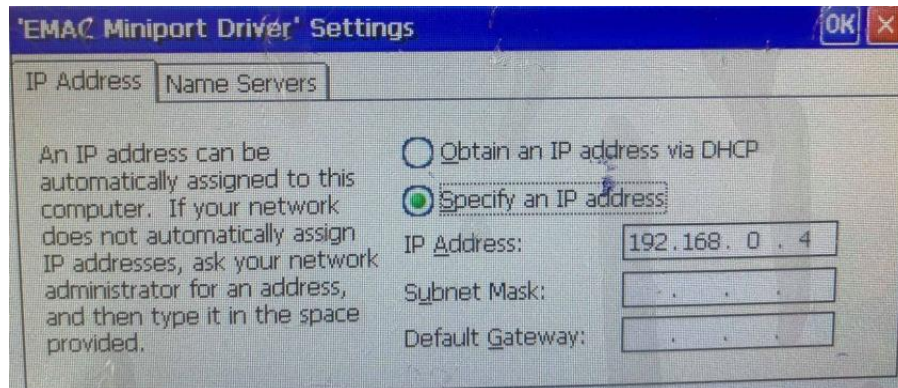




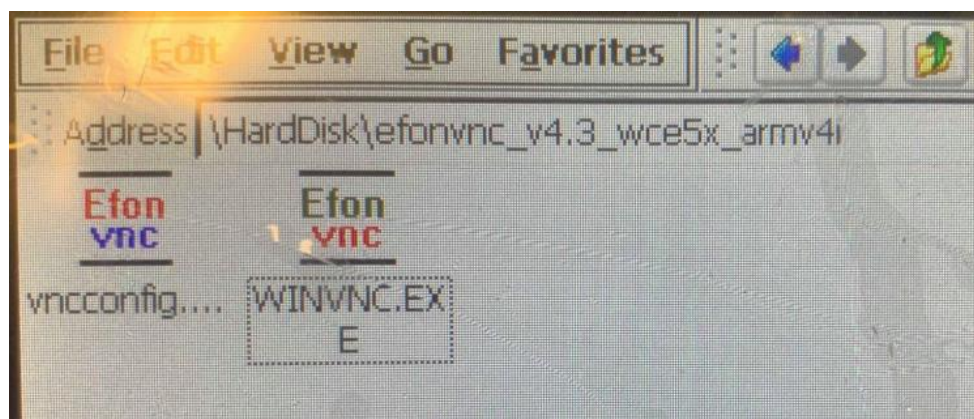
Part B. WinCE as a client to be remotely controlled by other platform.

There is a free utility allows user to remote into WinCE OS called "EfonVNC".

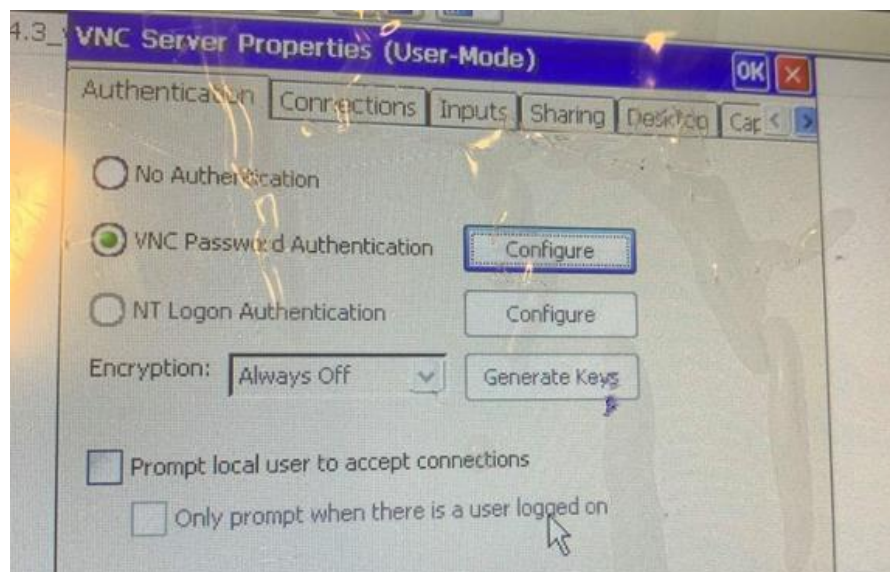
Before connecting through VNC, we set static IP on both PC(Win10&WinCE6)



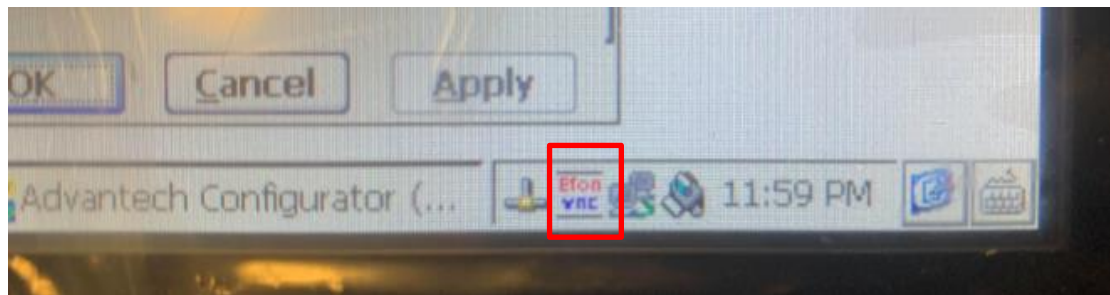
After checking the LAN connection is well, firstly run the VNC server in WinCE6.



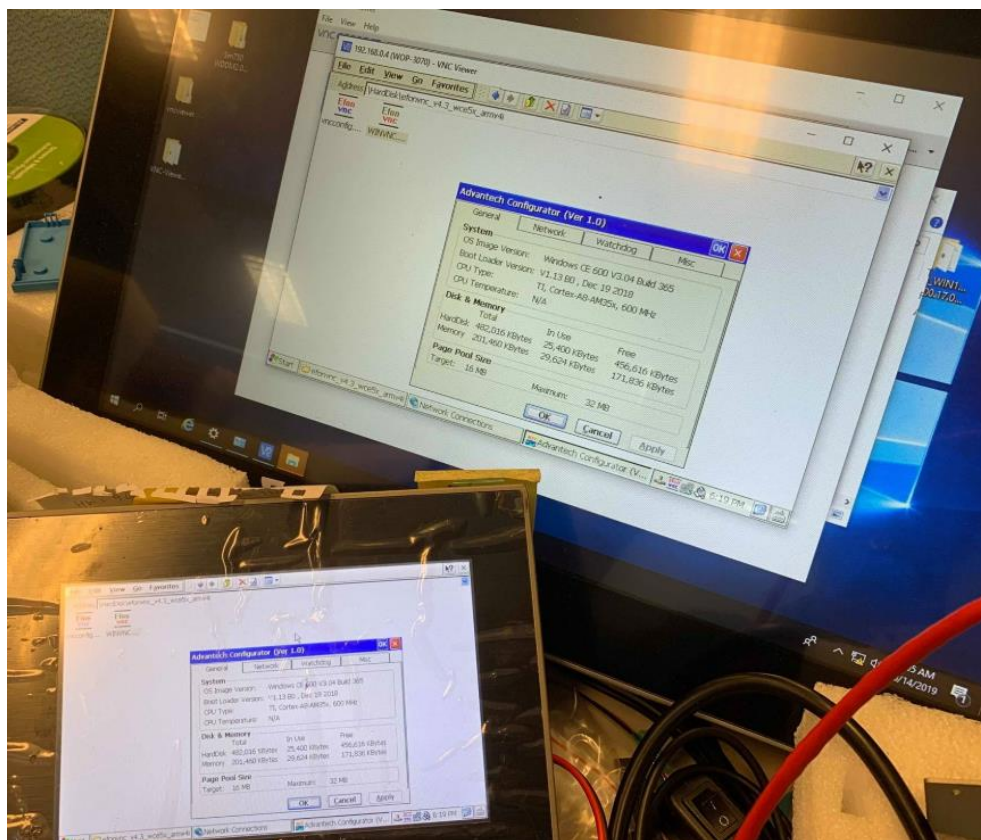
The VNC-Config.exe allows user to implement more settings.



After execution, VNS server will run and show the icon as below.



Back to your remote PC (demo by Win10 here), run the VNC viewer. Connect it via IP address then establish the connection.

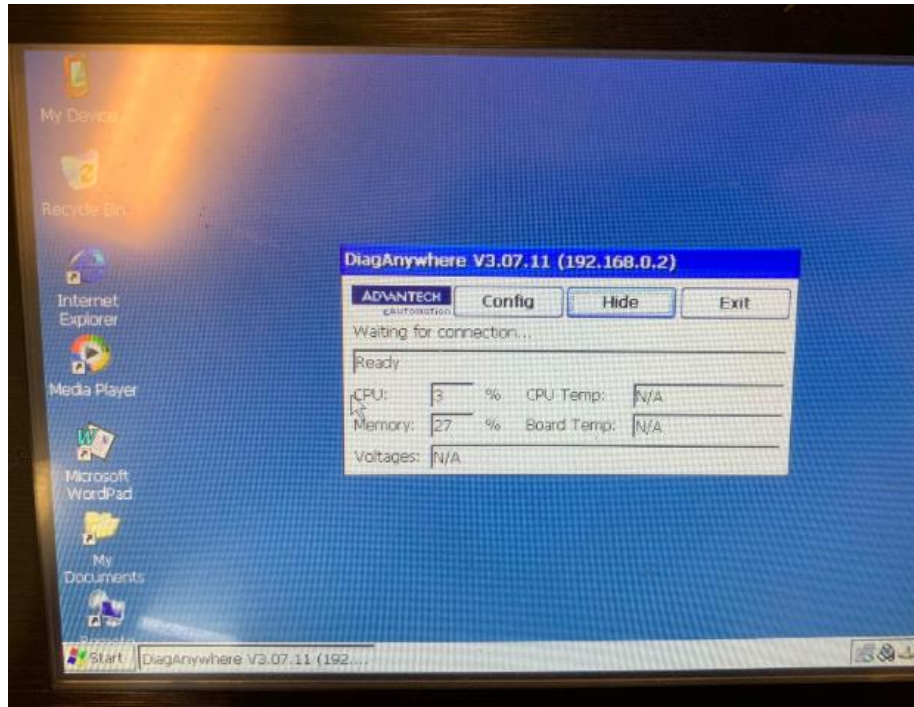




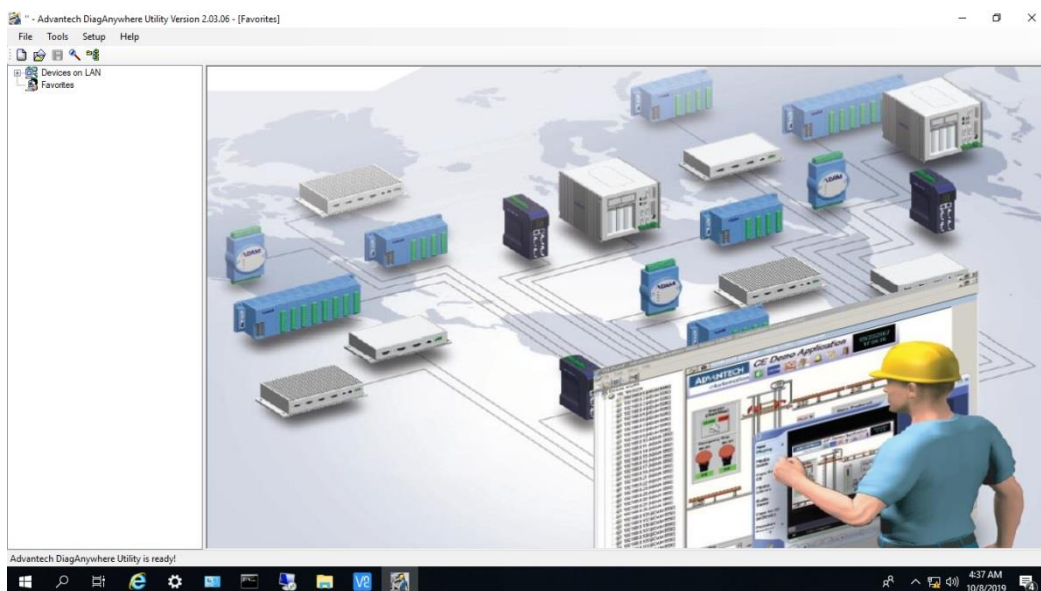
## If you have Advantech's DiagAnywhere Utility

### Part C. WinCE as a client to be remotely controlled by other platform.

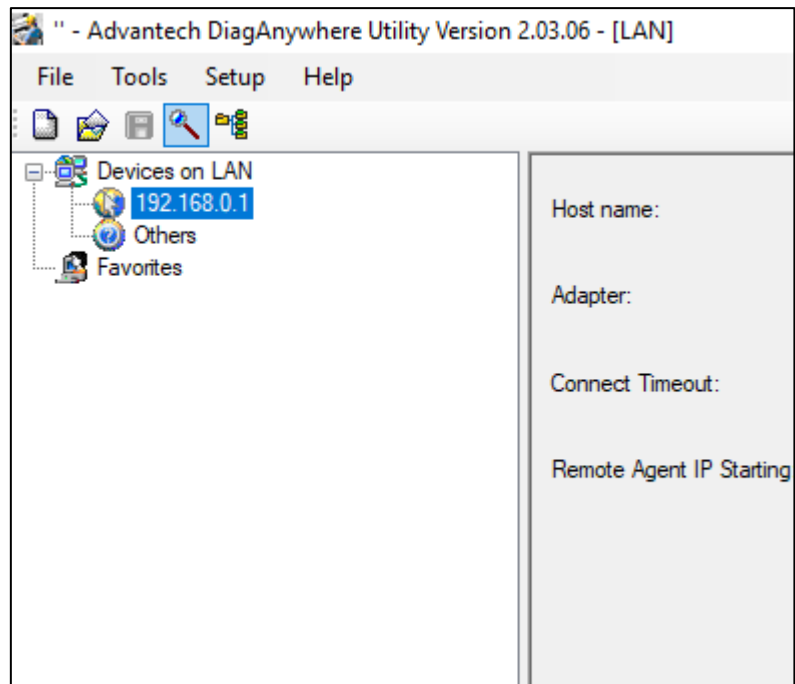
The most efficient way that we provide currently is Advantech's utility "DiagAnywhere". Which is built-in our WinCE OS by default as shown below.



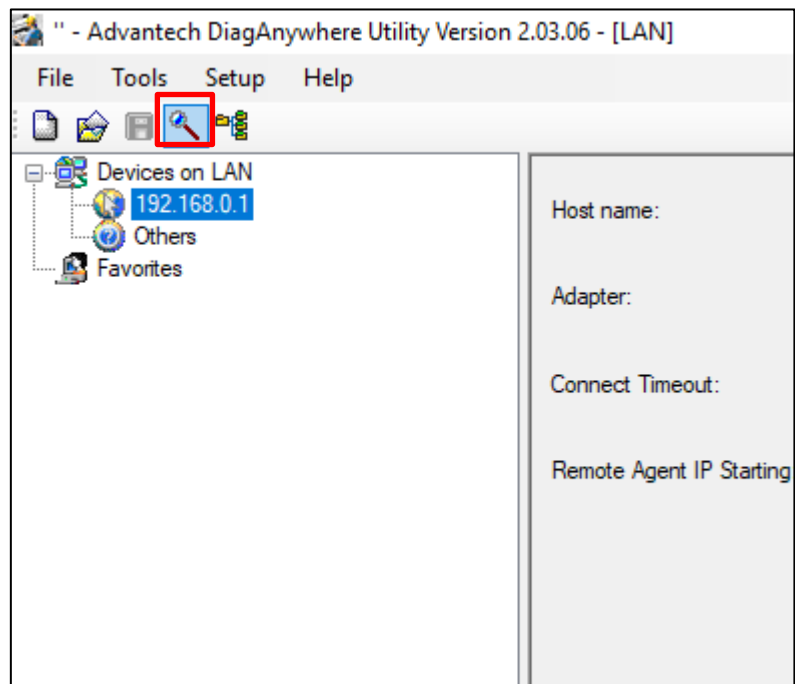
Install DiagAnywhere in your control PC, the startup page is shown below. The utility can be downloaded from Advantech's support site.



The main page only shows your own IP originally.  
(which is 192.168.0.1 in our demo test.)

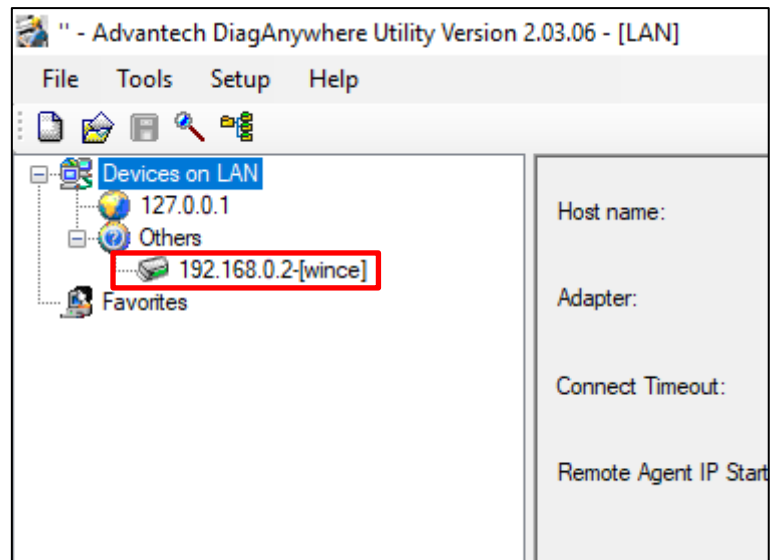


Click the “search the LAN” button to search connected devices.



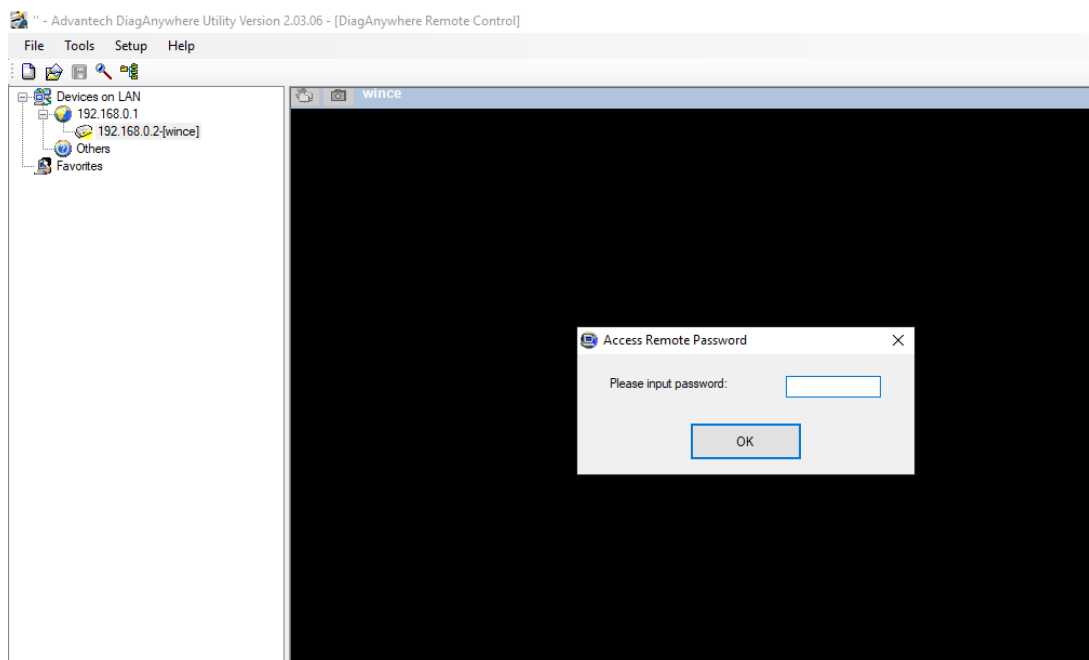


The device is found after searching.

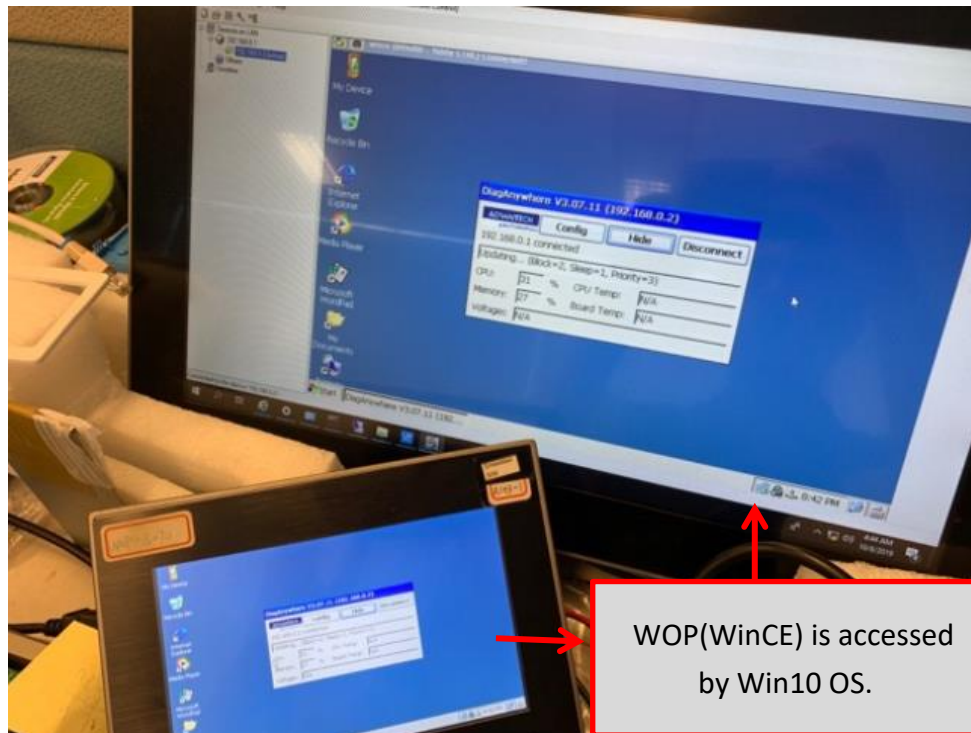


The remote control is available after inputting correct password.

Default password of WinCE is "password".



Now, we are able to get the access to WinCE OS remotely as below.



■ **Contact Window:**

If you need further information from headquarter, please contact PAE Tony.Cheng #7820.