

Advantech SE Technical Share Document

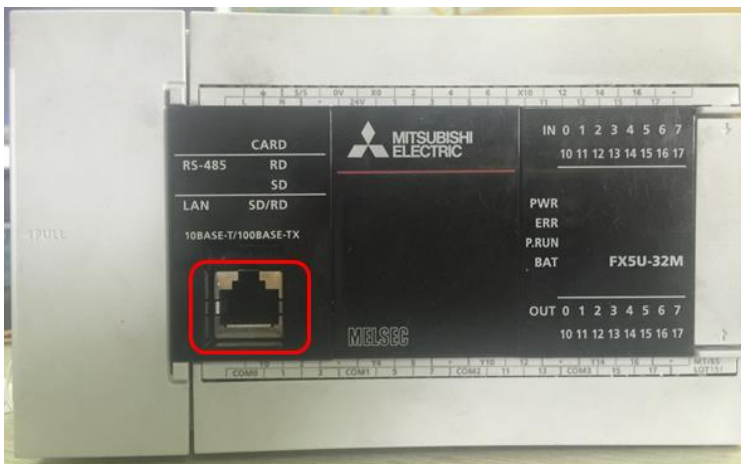
Date	2019 / 09 / 23	Related Product	ESRP-PCS-WISE710 / ESRP-CSS-UNO2271	
Category	<input type="checkbox"/> FAQ <input type="checkbox"/> SOP <input checked="" type="checkbox"/> Driver Tech Note		/ ESRP-CSS-UNO2484 / ESRP-CSS-UNO1372/ESRP-CSS-UNO2372	
Abstract	How to connect EdgeLink and Mitsubishi FX5U device via Ethernet port			
Keyword	WISE-PaaS EdgeLink / FX5U			
Related OS	Linux image			
Revision History				
Date	Version	Author	Reviewer	Description
2019/09/23	V1.0	Black Chang	Nick Liu	EdgeLink Studio V2.5

■ Problem Description & Architecture:

How to connect EdgeLink and Mitsubishi FX5U device via Ethernet port

■ Brief Solution - Step by Step:

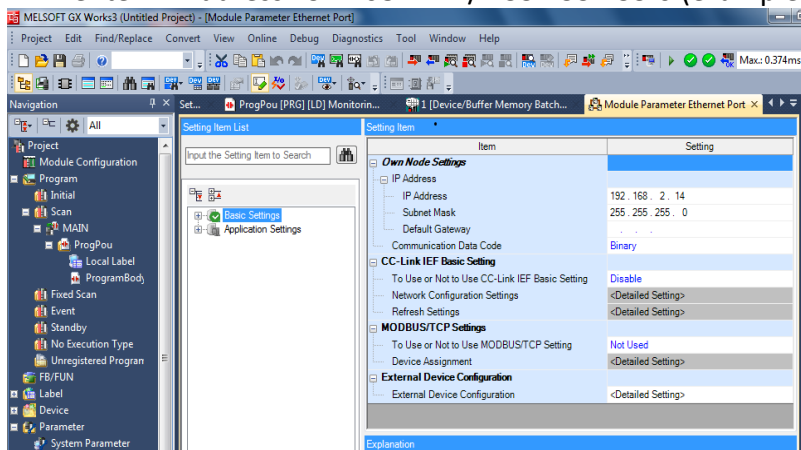
FX5U PLC



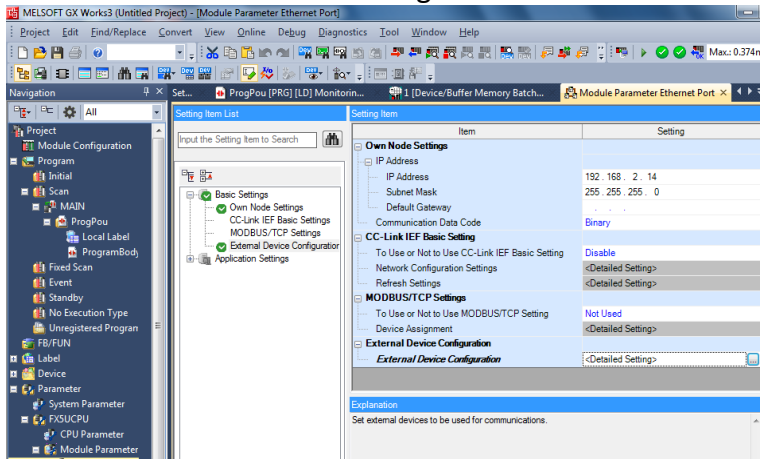
Ethernet port

1. FX5U PLC Setting

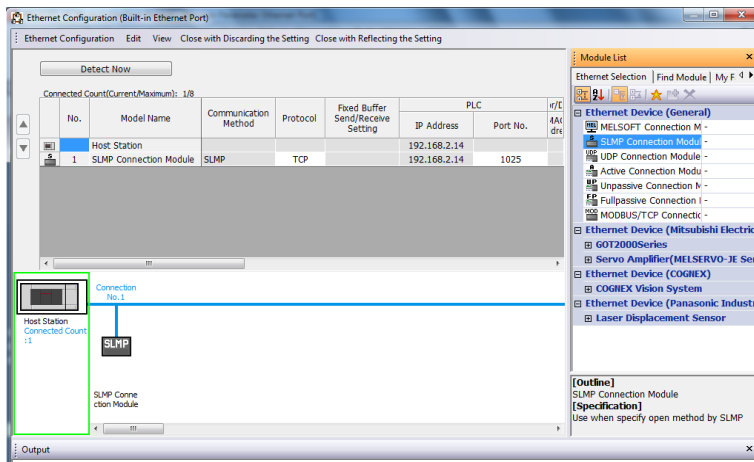
1-1. enter IP Address 192.168.2.14 / 255.255.255.0 (example)



1-2. click “External Device Configuration”



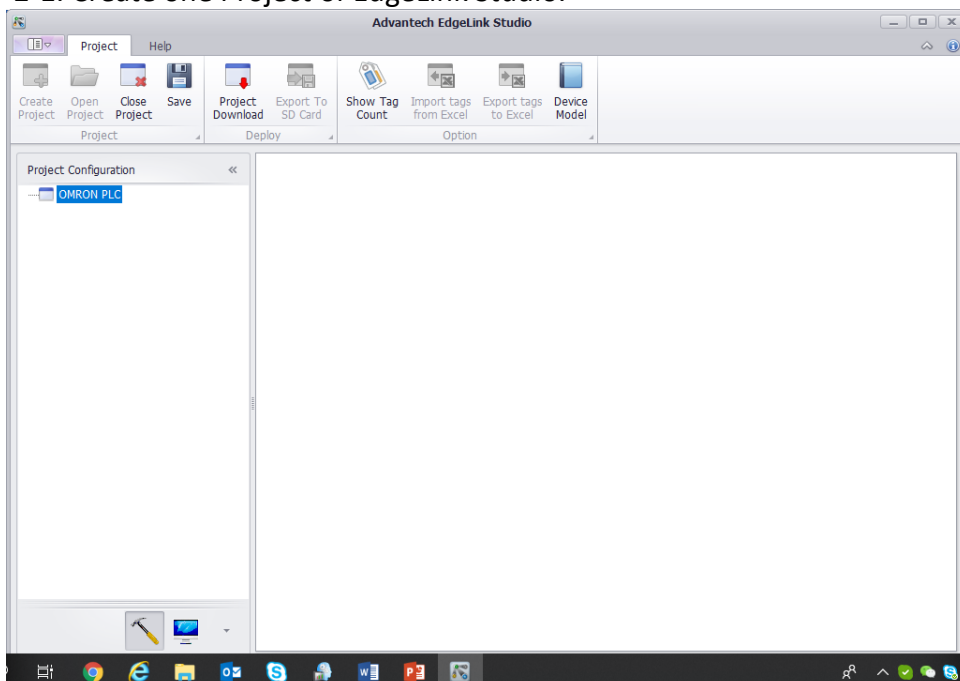
1-3. add “SLMP Connection Module” and set Port No. → 1025(Dec.)



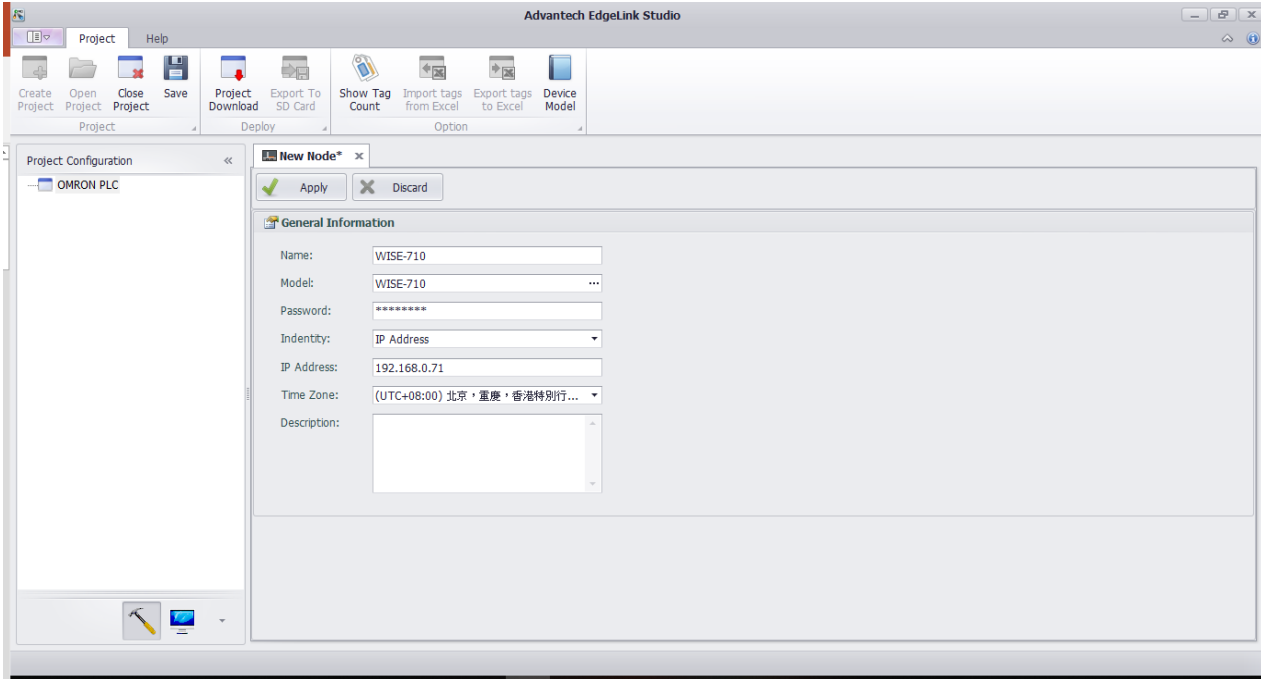
1-4. please compile the PLC project and download to FX5U PLC

2. EdgeLink Studio Setting

2-1. Create one Project of EdgeLink Studio.



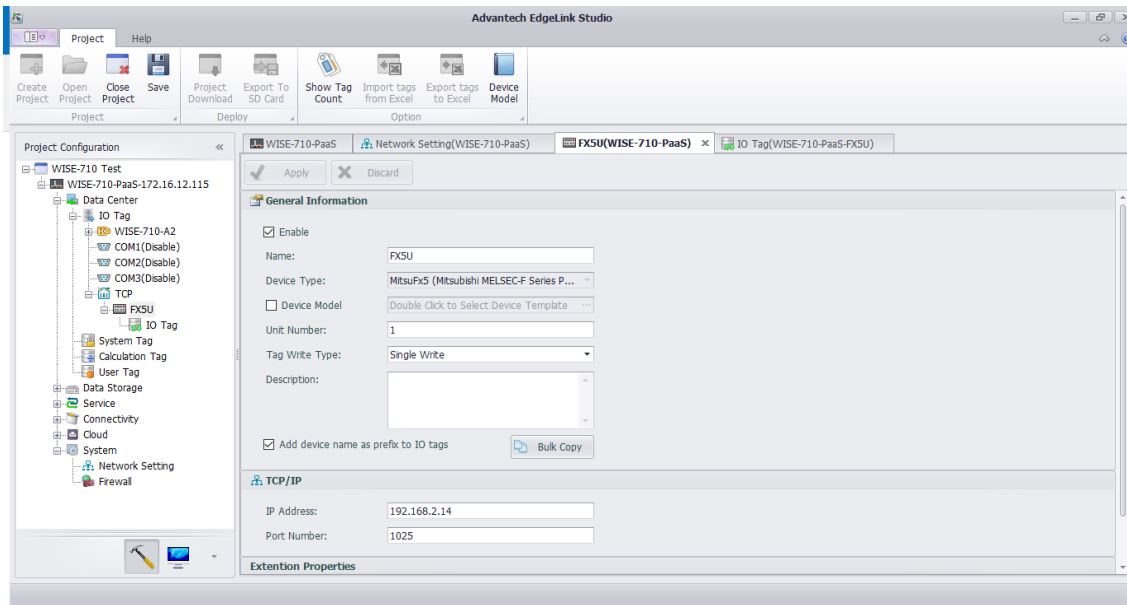
2-2. Select WISE-710 device on the EdgeLink Studio, and enter IP Address 192.168.2.71(example)



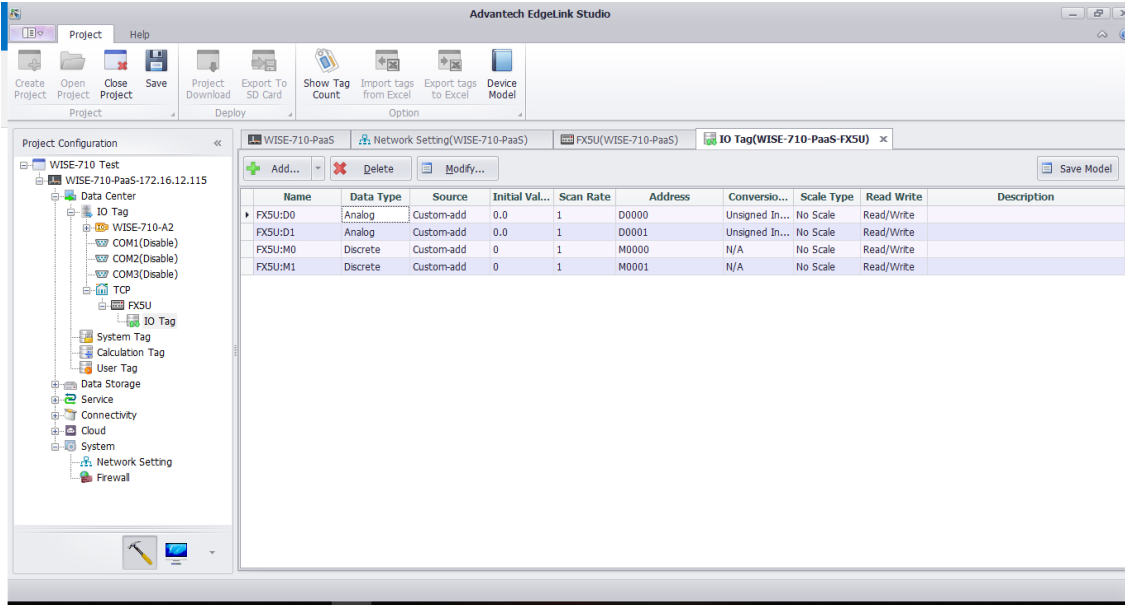
2-3. Add FX5U driver on the TCP and setting the communication parameter.

IP address: 192.168.2.14

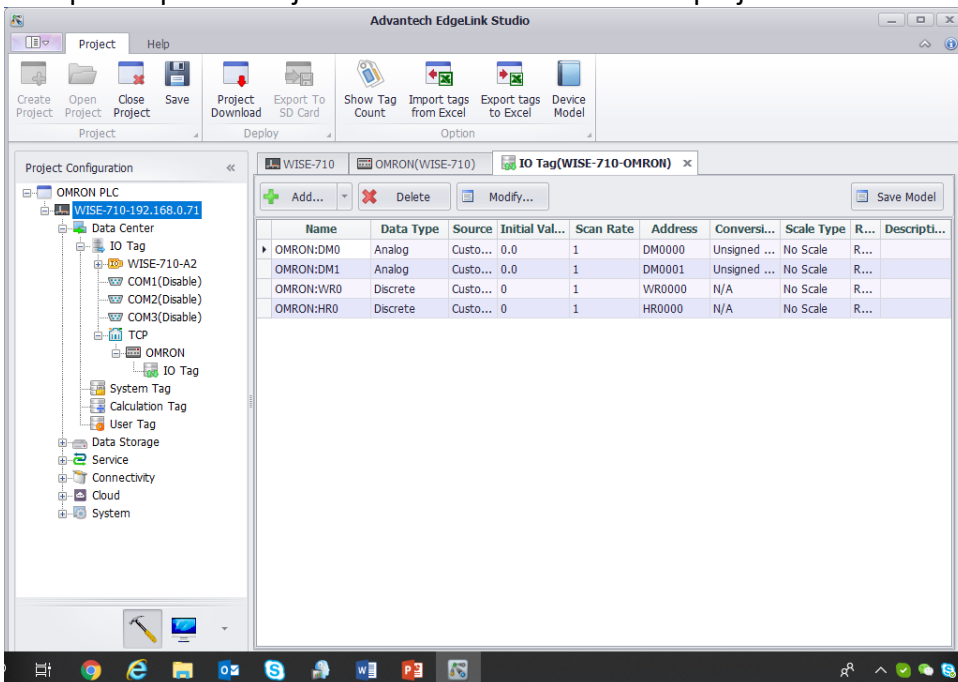
Port Number: 1025



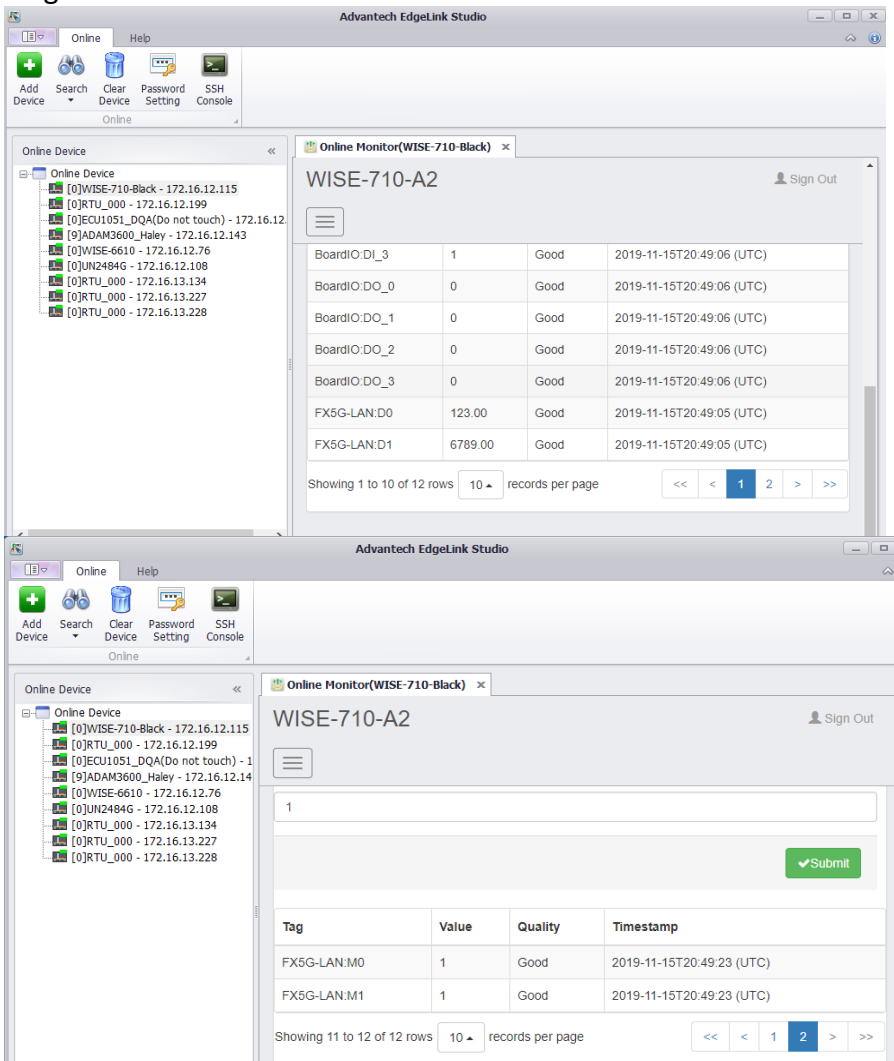
2-4. Add PLC address on the IO Tag. (Please refer the following setting)



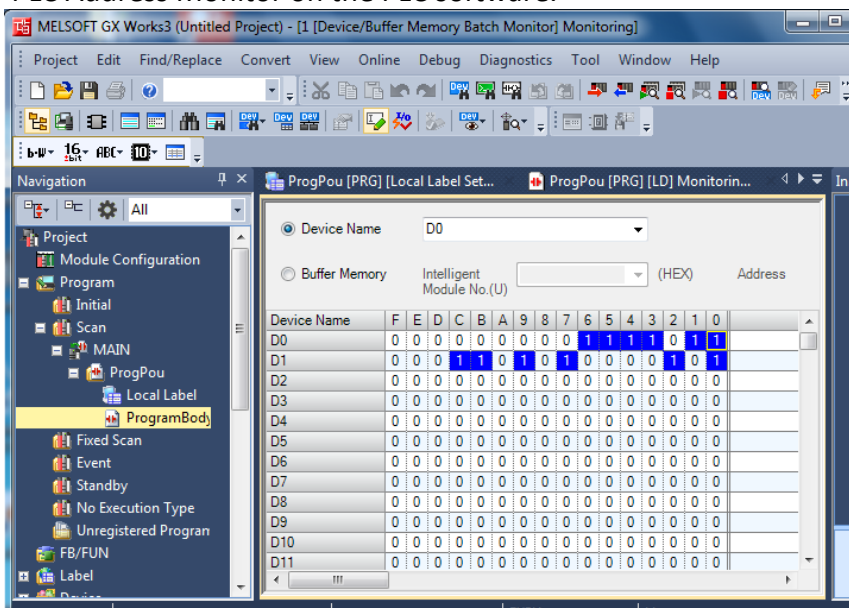
2-5. please press “Project Download” and download project to WISE-710

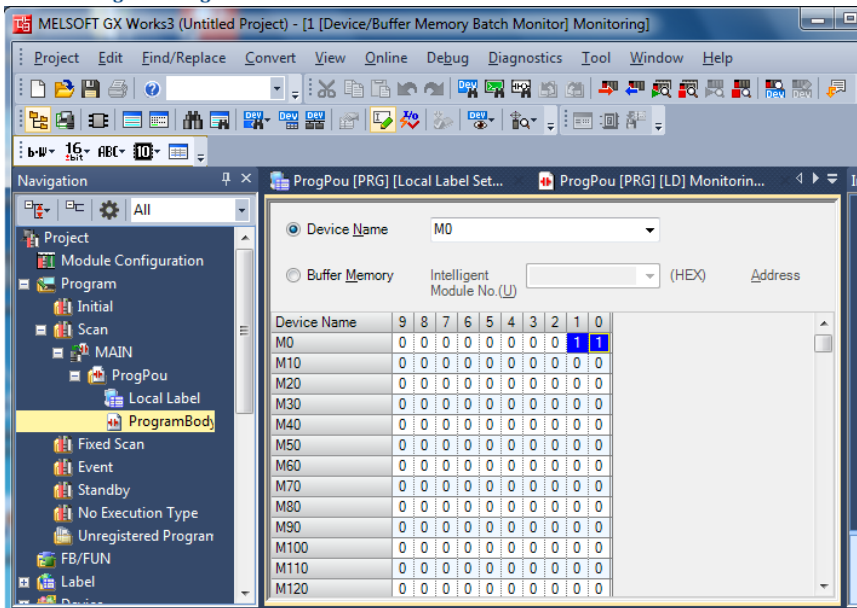


2-6. Please change to Monitor screen and connect to WISE-710.
Change to IO Tag and will show the value of PLC address.
EdgeLink Studio Monitor:



PLC Address Monitor on the PLC software.





- **Pin Definition (in case of serial connection):**
- **Reference:**