

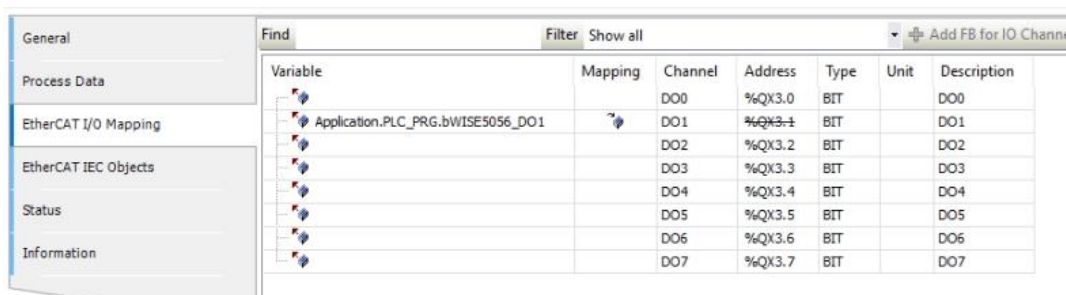
# Advantech SE Technical Share Document

Date	2020 / 03/ 27	Related Product	CODESYS	
Category	<input type="checkbox"/> FAQ <input checked="" type="checkbox"/> SOP <input type="checkbox"/> Driver Tech Note			
Abstract	The SOP to Change WISEIO to AMAXIO by CODESYS.			
Keyword	CODESYS, IO Mapping, EtherCAT, CSV			
Related OS	Windows			
Revision History				
Date	Version	Author	Reviewer	Description
2020/03/27	V1.0	Owen.Chang		CODESYS SP15

## ■ Problem Description & Architecture:

Due to the company's policy, Advantech changes the module name of WISE-5XXX to AMAX-5XXX. Take the WISE-5056 as the example, its name is changed to AMAX-5056.

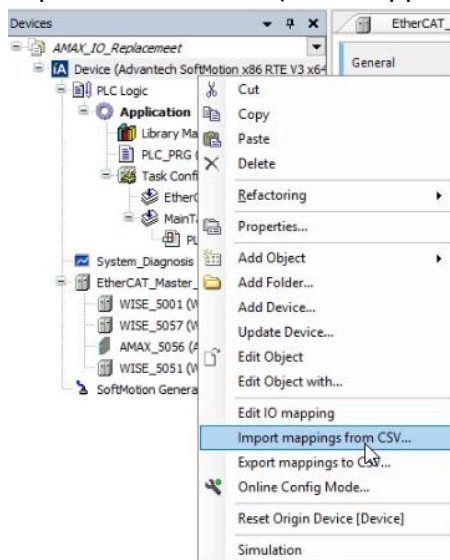
This SOP will show that how to adjust the customer's project when replacing WISE-5056 with AMAX-5056 in order to keeping IO mapping information.



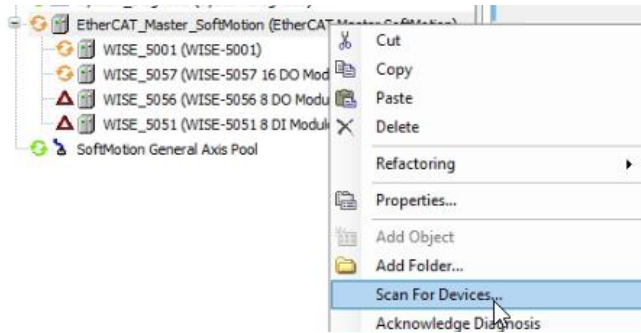
Variable	Mapping	Channel	Address	Type	Unit	Description
		DO0	%QX3.0	BIT		DO0
Application.PLC_PRG.bWISE5056_DO1		DO1	%QX3.1	BIT		DO1
		DO2	%QX3.2	BIT		DO2
		DO3	%QX3.3	BIT		DO3
		DO4	%QX3.4	BIT		DO4
		DO5	%QX3.5	BIT		DO5
		DO6	%QX3.6	BIT		DO6
		DO7	%QX3.7	BIT		DO7

## ■ Brief Solution - Step by Step:

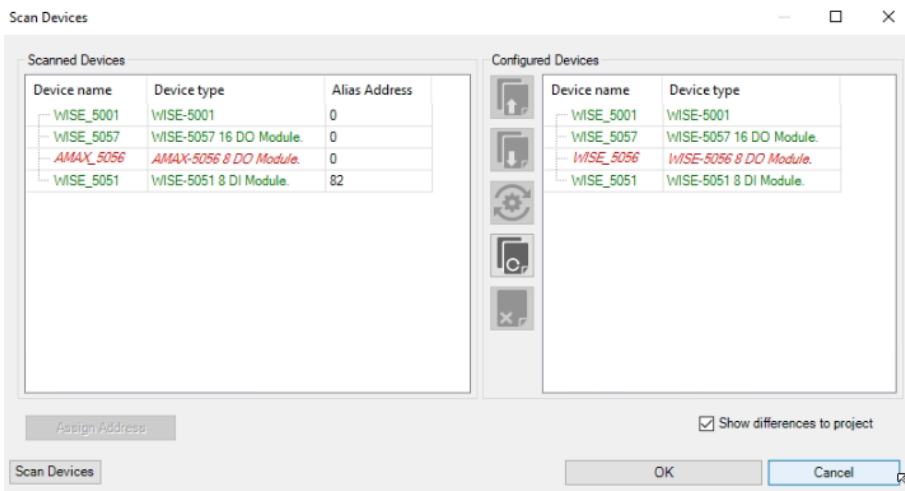
1. Export csv of Device (whole application configuration).



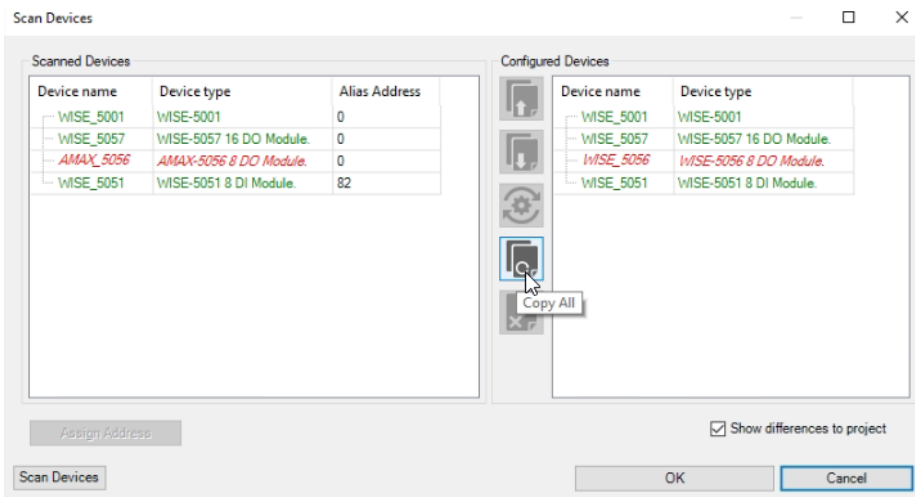
2. Change the AMAX-5056 instead of WISE-5056.
3. Login and scan device.



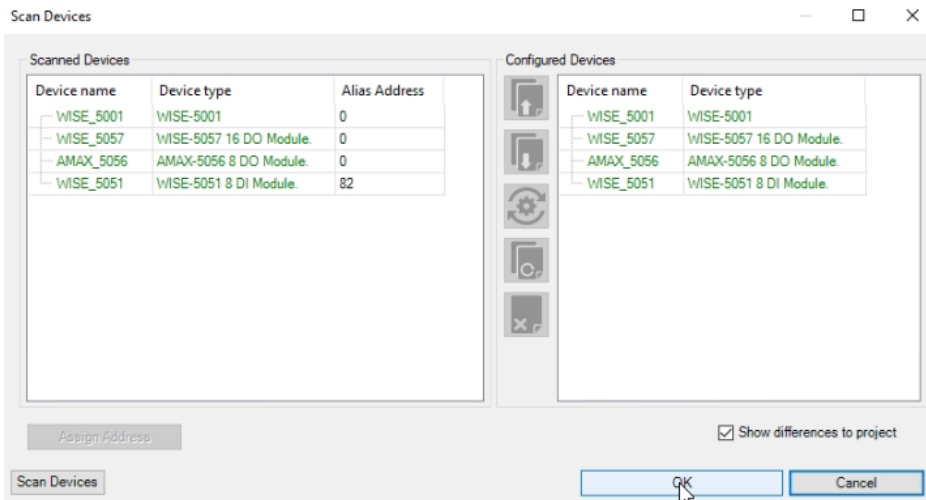
4. Click "show difference to project" and remember the device name of the broken one.



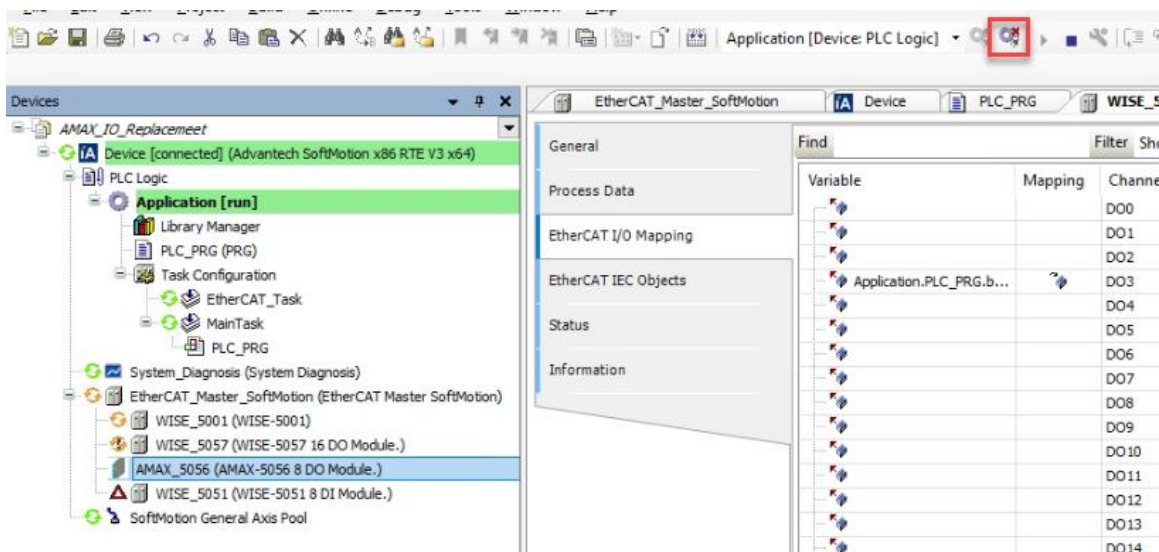
5. Copy all Scan Device as Configured Device.



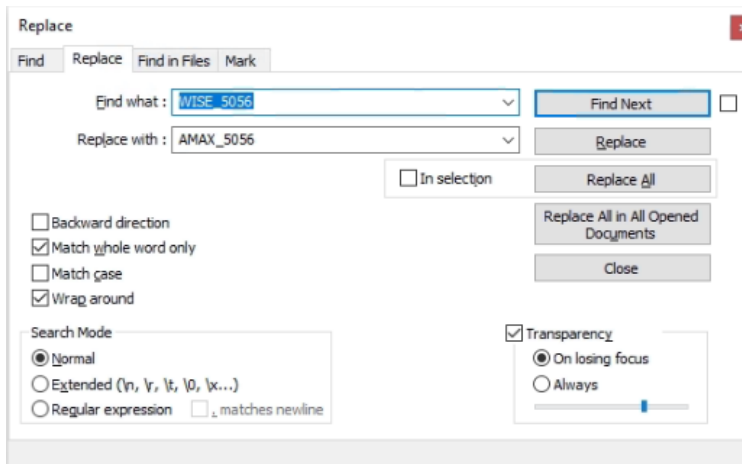
6. The click OK.



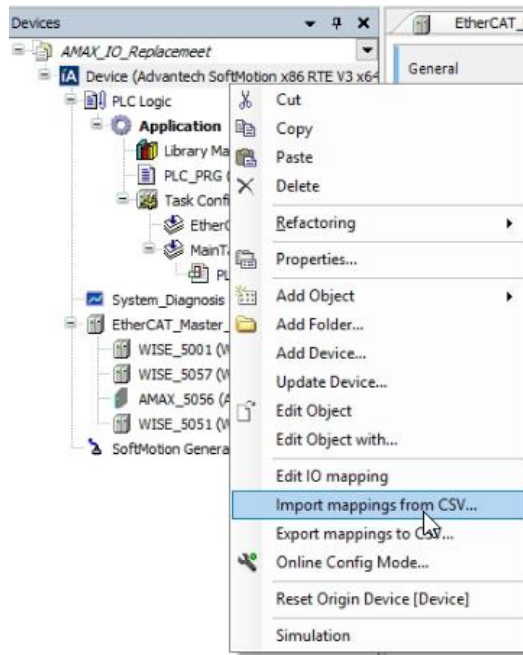
7. You could see that the all scan device is imported to project tree. Logout to remap the IO.



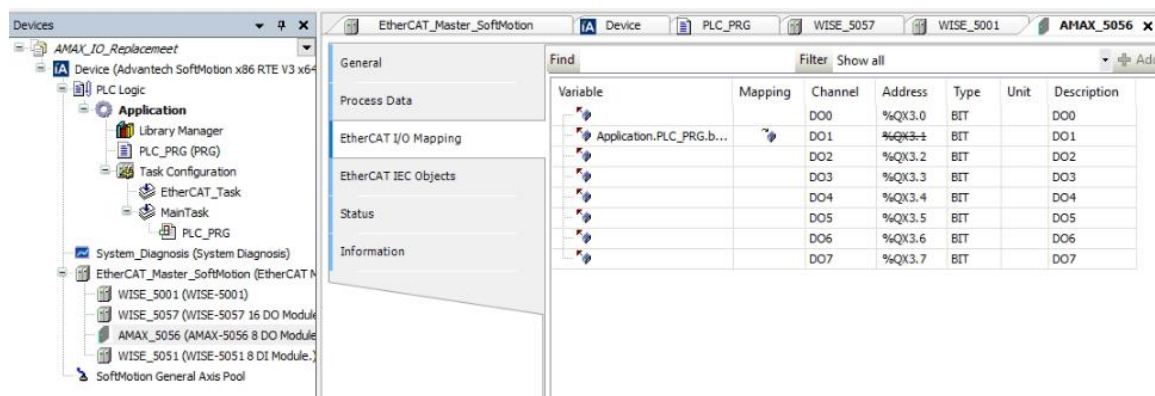
8. Open the csv file and replace all WISE\_5056 as AMAX\_5056 and save.



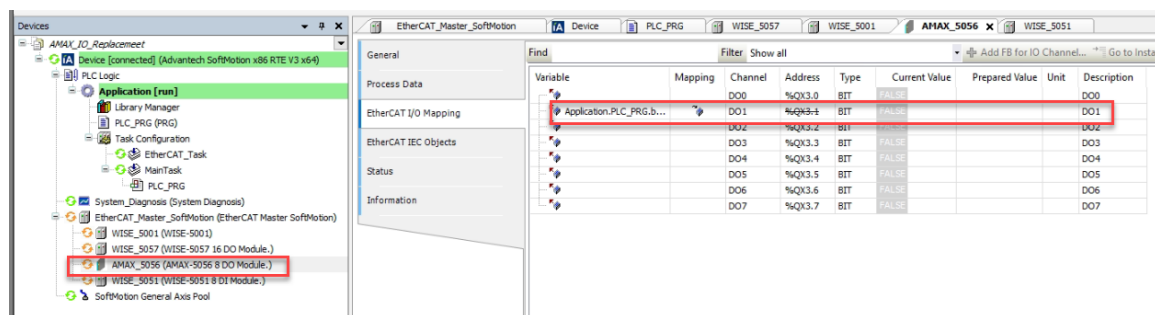
9. Import csv.



10. You could see that the IO-mapping in AMAX\_5056 is the same as in WISE-5056.



11. Then Login and run.



## Reference:

N/A