

# Advantech SE Technical Share Document

Date	2020 / 02 / 19	Related Product	ESRP-PCS-WISE710 / ESRP-CSS-UNO2271	
Category	<input type="checkbox"/> FAQ <input type="checkbox"/> SOP <input checked="" type="checkbox"/> Driver Tech Note		/ ESRP-CSS-UNO2484 / ESRP-CSS-UNO1372/ESRP-CSS-UNO2372	
Abstract	How to connect EdgeLink and Siemens S7 series device			
Keyword	WISE-PaaS EdgeLink / Siemens S7			
Related OS	Linux image			
Revision History				
Date	Version	Author	Reviewer	Description
2020/02/19	V1.0	Black Chang	Nick Liu	EdgeLink Studio V2.5

## ■ Problem Description & Architecture:

How to connect EdgeLink and Siemens S7 series device

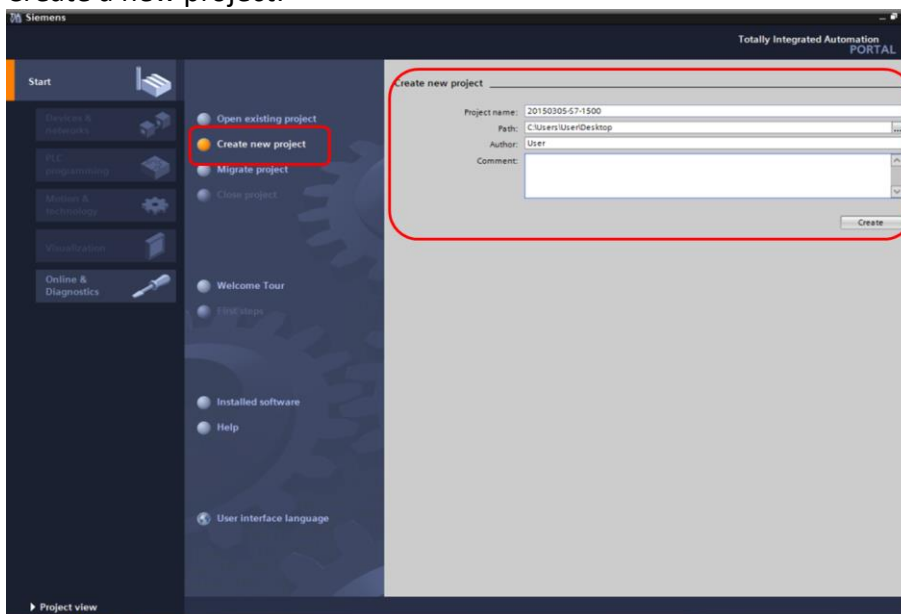
## ■ Brief Solution - Step by Step:

### **S7-1x00 PLC**

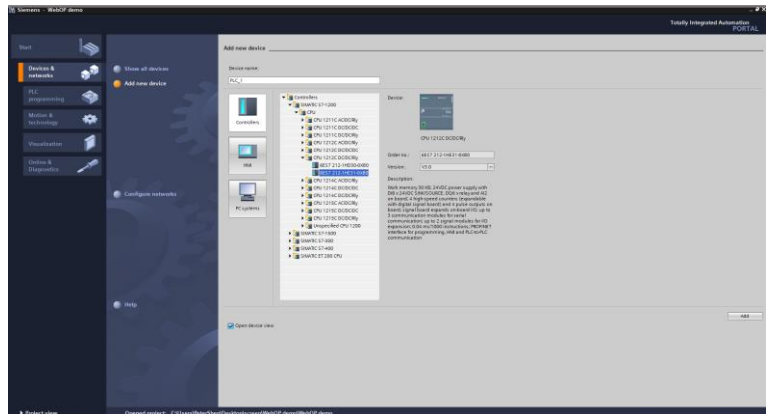
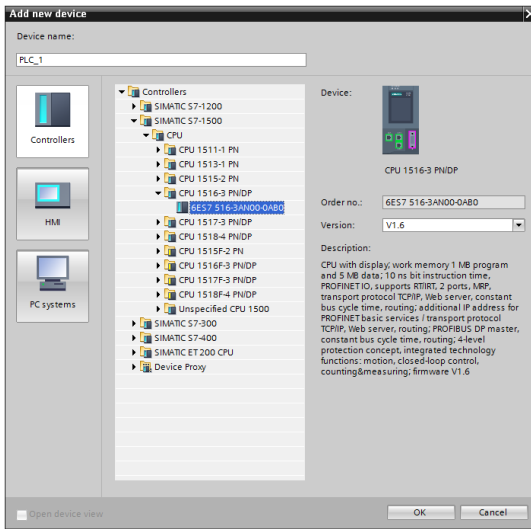
This tech note introduces how to connect to Siemens S7 series PLC with WISE-PaaS/EdgeLink. User can set the communication setup in TCP/IP and it can connect to Siemens S7 with WISE-PaaS/EdgeLink.

## **1. S7-1x00 controller setting**

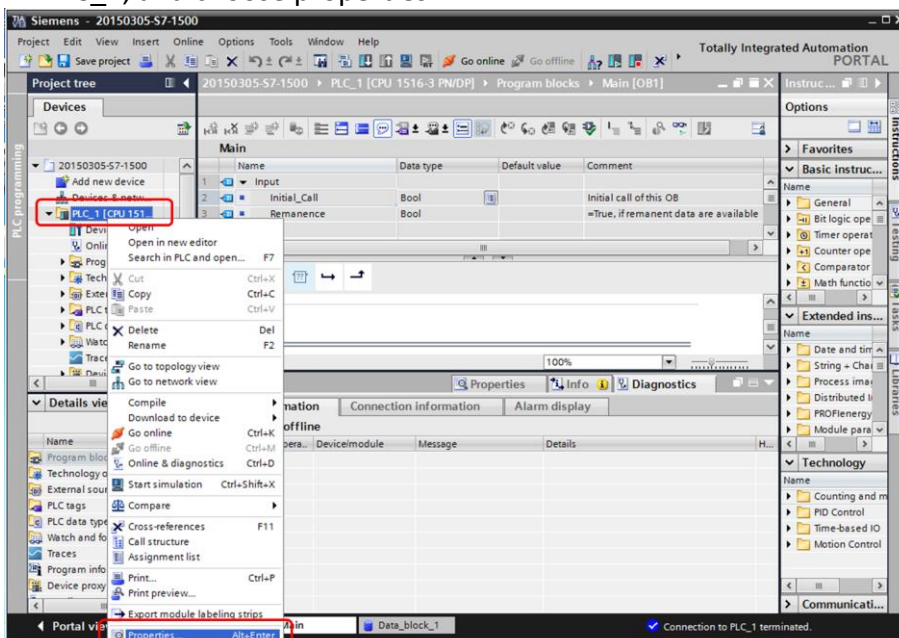
Create a new project:



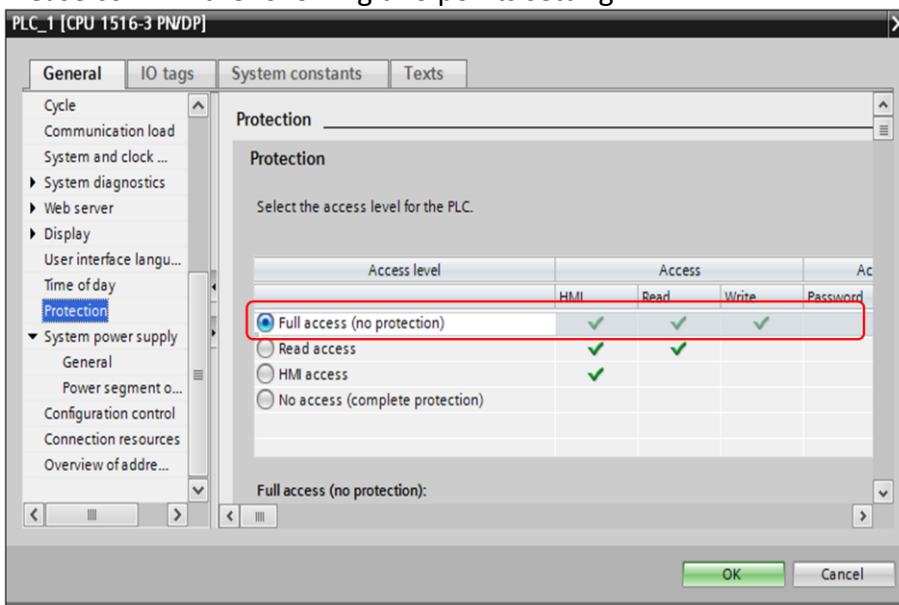
## Add a new device

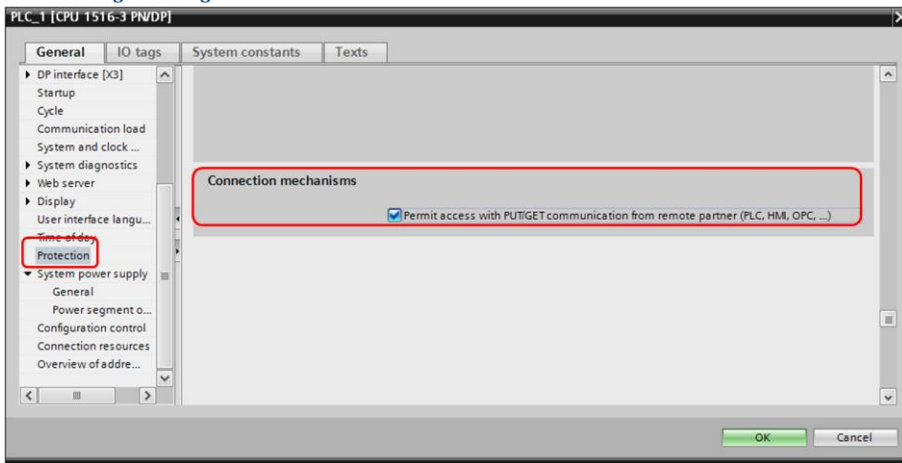


## In PLC\_1, and choose properties

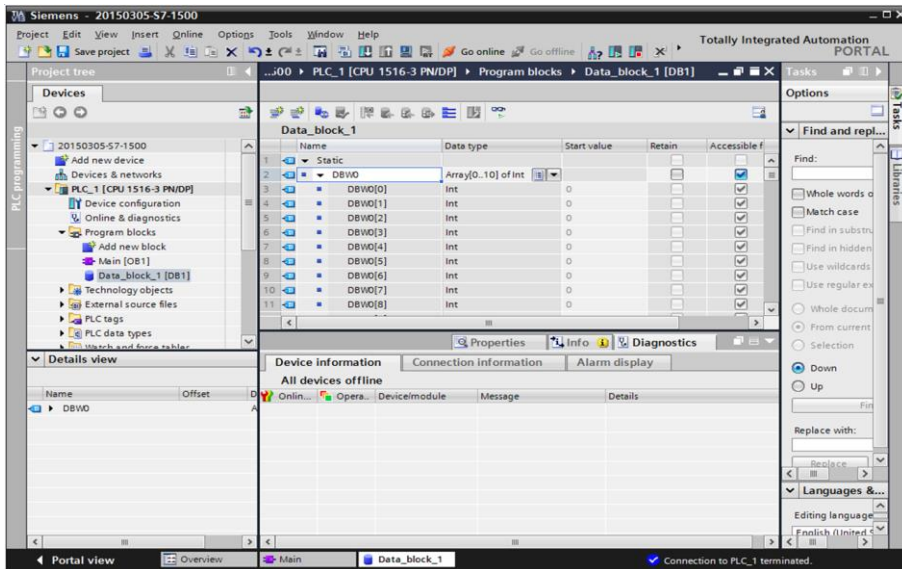


Please confirm the following two points setting:

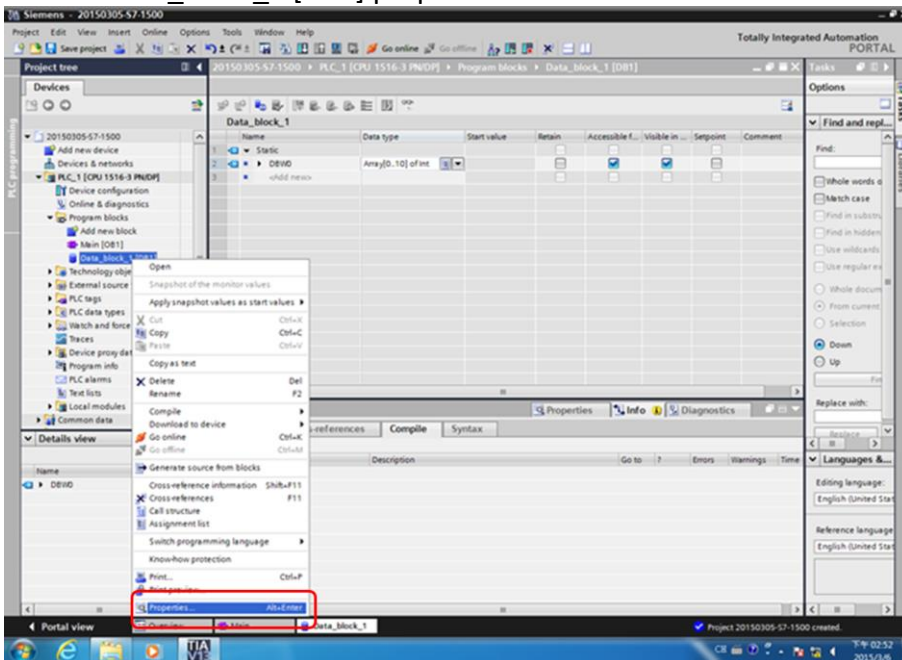




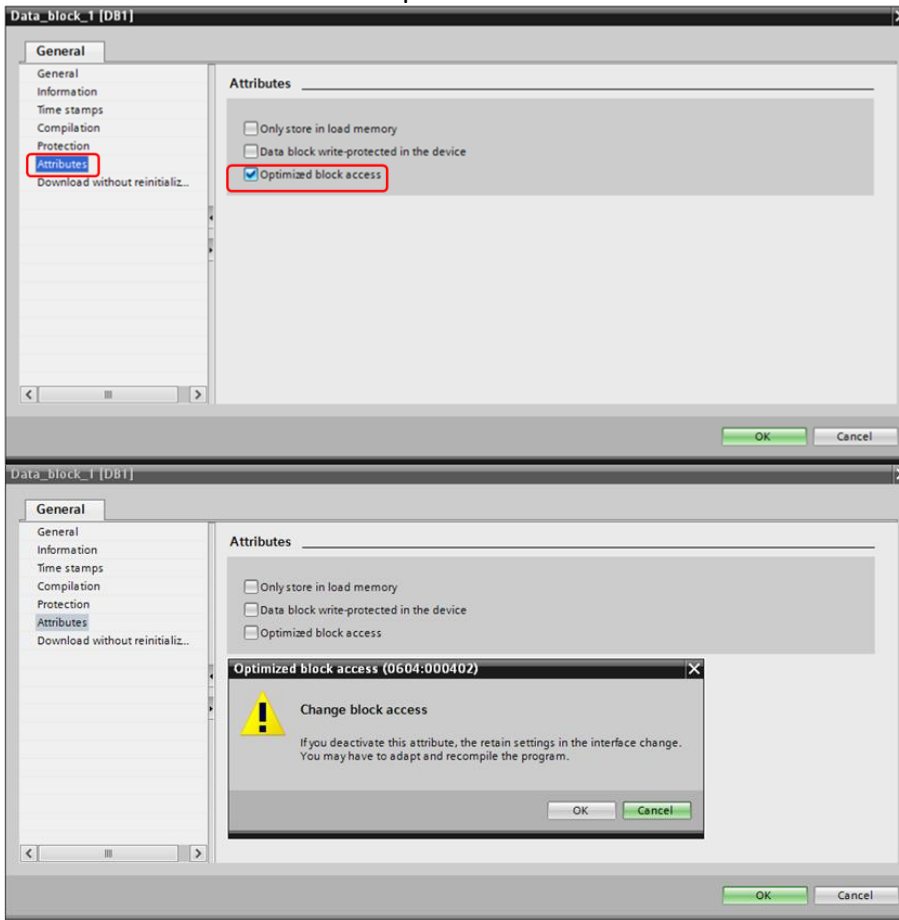
## Create a new data block



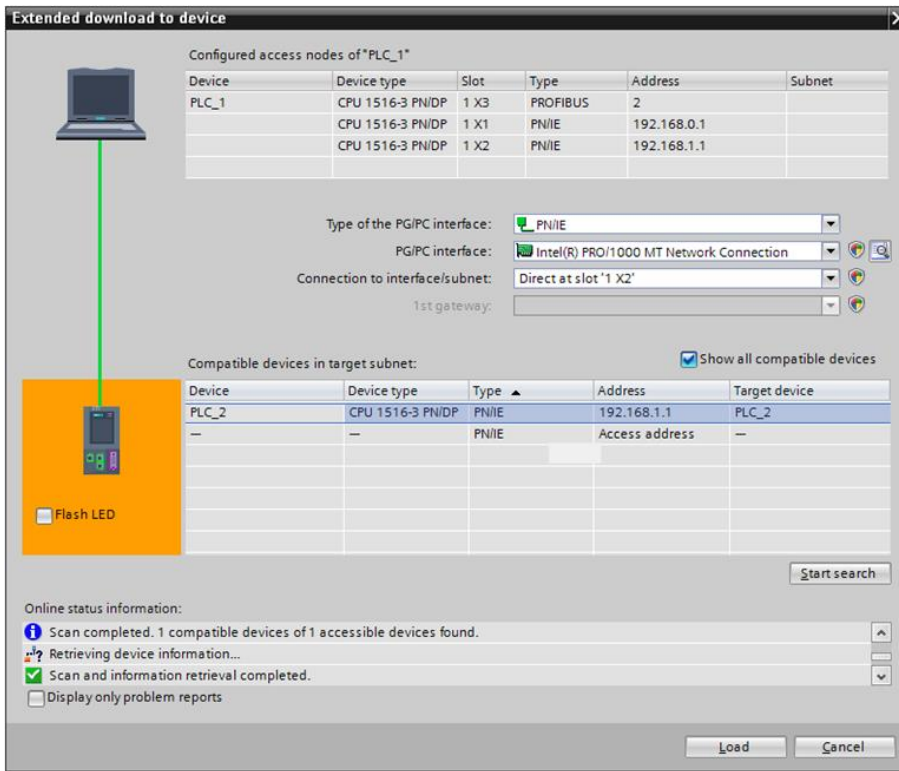
## Choose Data\_block\_1 [DB1] properties:



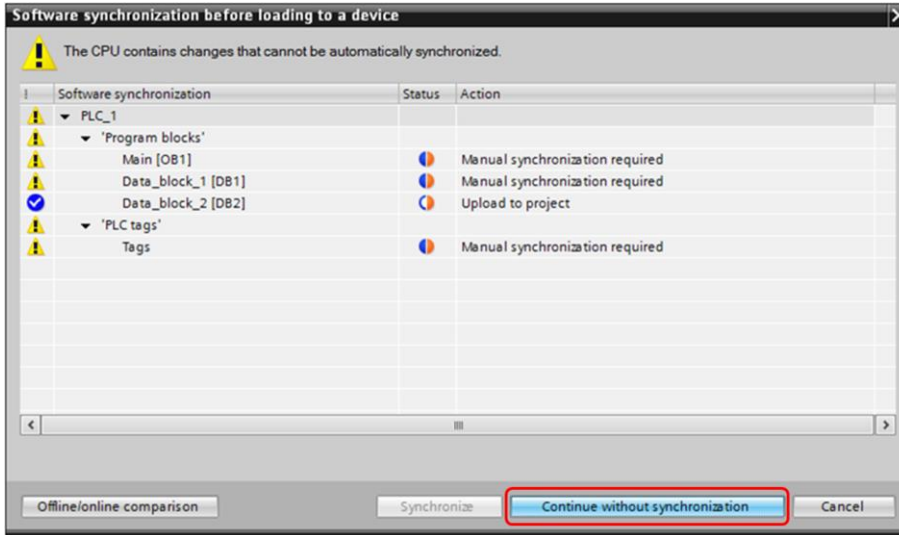
Choose → Attributes → click optimized block access cancel



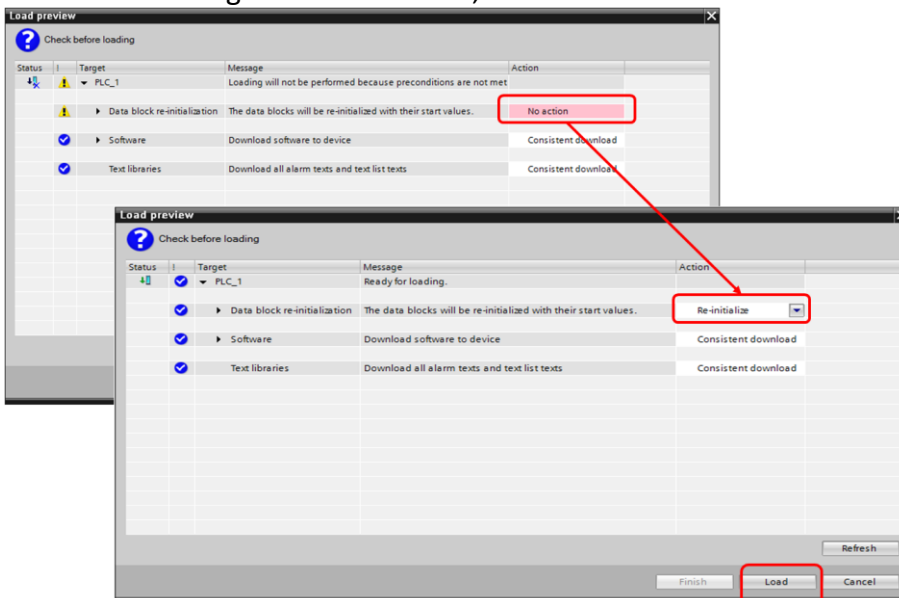
Extended download to device → Load



## Continue without synchronization



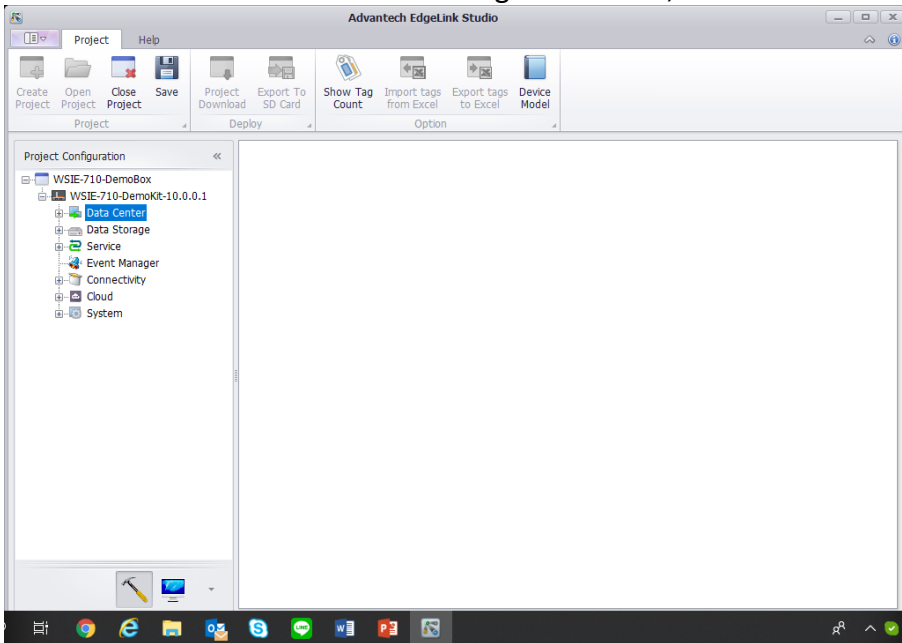
“No action” change to “Re-initialize”, and Load



## 2. EdgeLink Studio Setting

2-1. Create one Project of EdgeLink Studio.

2-2. Select WISE-710 device on the EdgeLink Studio, and enter IP Address.

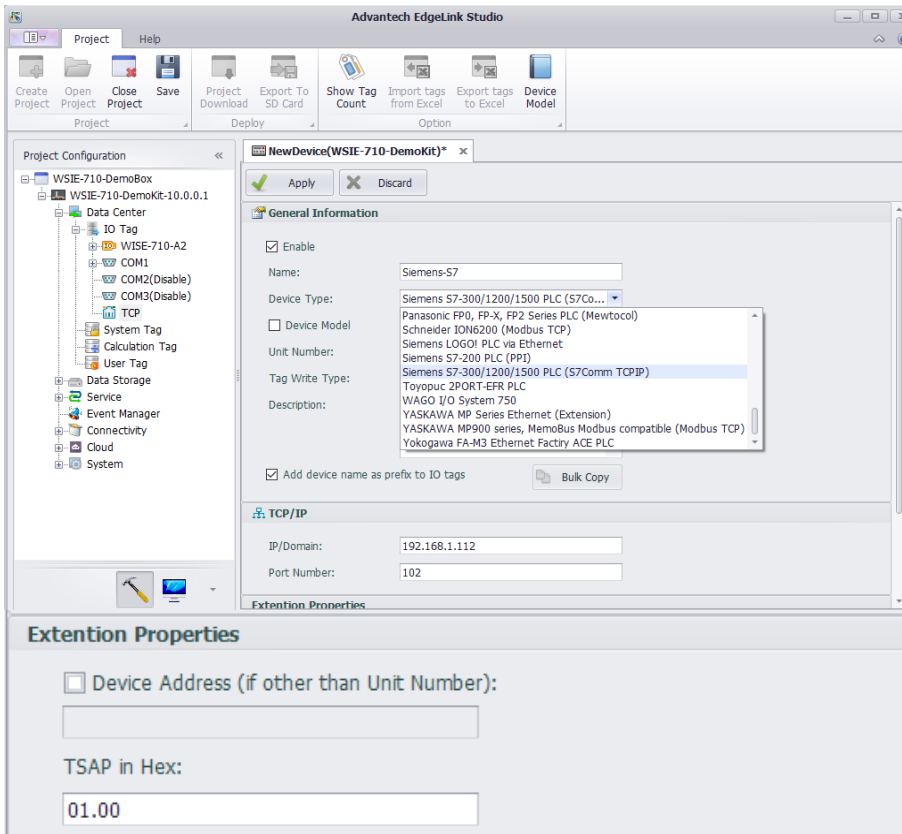


2-3. Add Siemens S7 driver on the TCP and setting the communication parameter.

IP address: 192.168.1.112

Port Number: 102

TSAP in Hex : Device ID, Rackslot : 01.00



## 2-4. add tag

## 2-5. Network setting:

2-6. please press “Project Download” and download project to WISE-710

2-7. Please change to Monitor screen and connect to WISE-710, change to IO Tag and will show the value of PLC address.

### ■ Pin Definition (in case of serial connection):

### ■ Reference: