

Product:

All PCI, PCL, PCM, MIC, and USB series modules for DAS cards

Abstract:

Checking the Version Information of DAS Cards

Description:

This document will introduce you how to check the related information of DAS cards. Usually, we need user helping us to collect the version information to facilitate the problem clarification.

The version information will include:

Software

Driver version information

Hardware

Barcode information

PCB version information

Others

CPU card version information

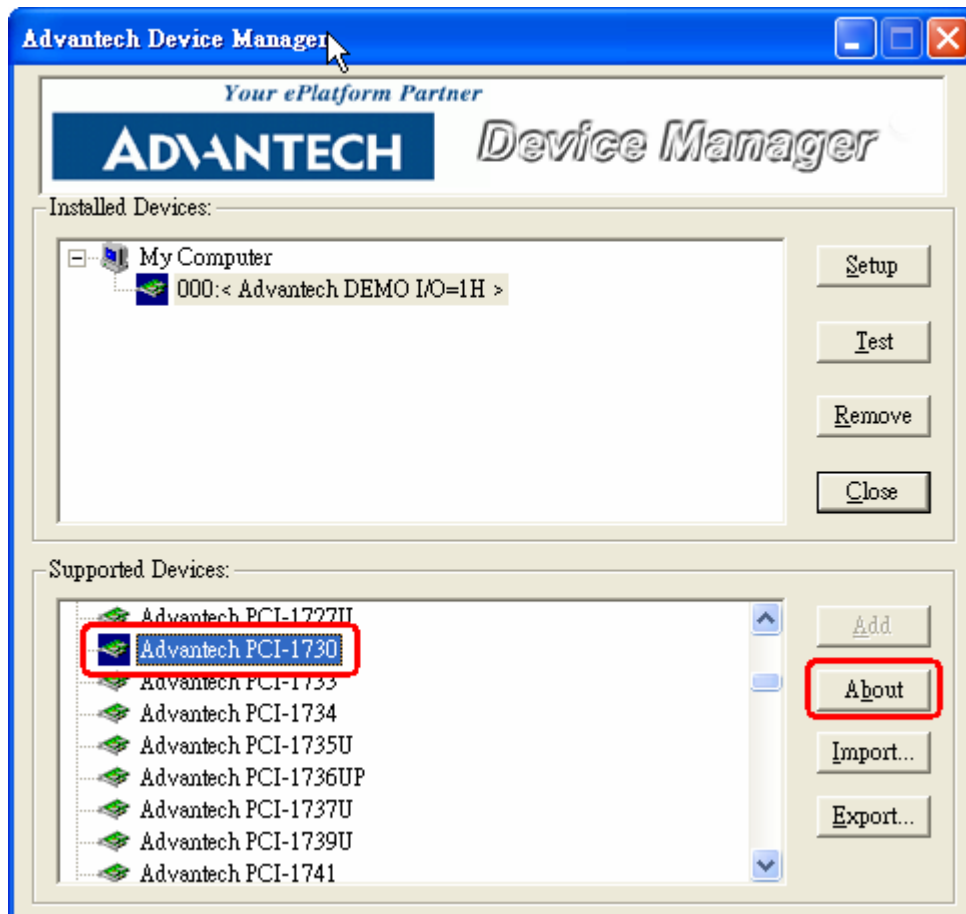
Backplane version information

Solution:

If you would like to check the software (driver) /hardware version for DAS cards,
please refer below:

Software/Driver Information

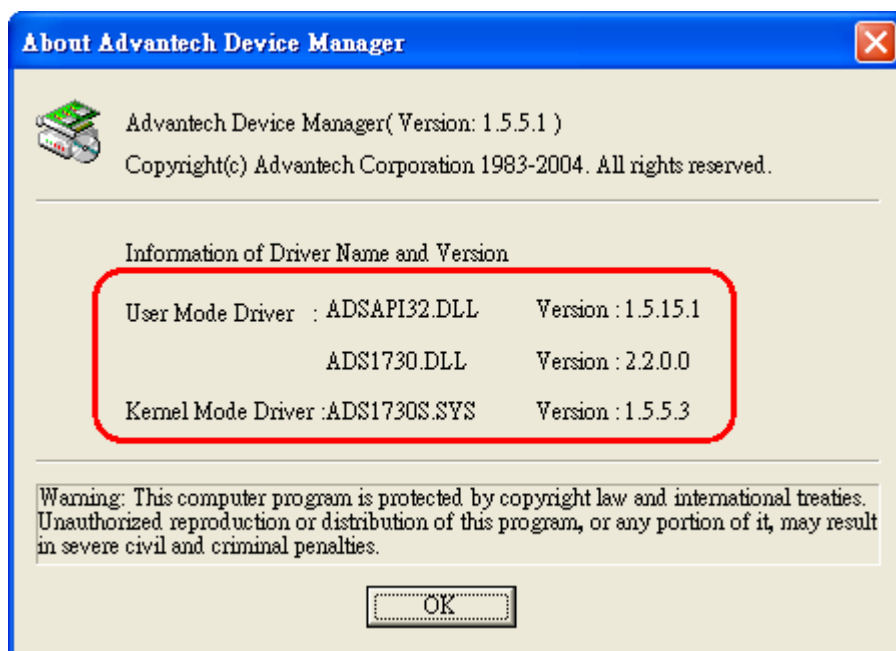
After installing driver and Advantech Device Manager, execute the program.



Choose one of the cards and click the “About” button, and you can see the versions of:

ADSAPI32.DLL,
ADSXXXX.DLL,
ADSXXXX.SYS

It is shown below:



<Suggestion>

We support these programs and drivers below:

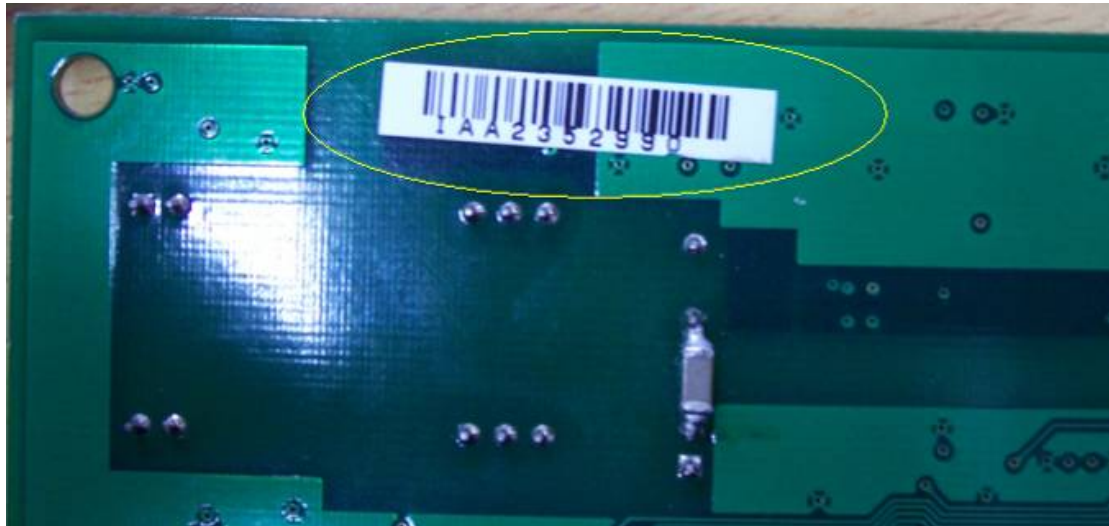
- DOS driver
- Advantech Device Manager
- Windows DLL driver
- Active DAQ driver
- Active DAQ Pro driver
- Labview driver
- Labview DAQ driver (it is not released and only obtained by AE.)
- Linux driver
- DasyLab driver (Generally, this driver hasn't been maintained anymore.)

Whatever the driver is installed, we always suggest you to update the latest driver on the Advantech website first.

Hardware Information

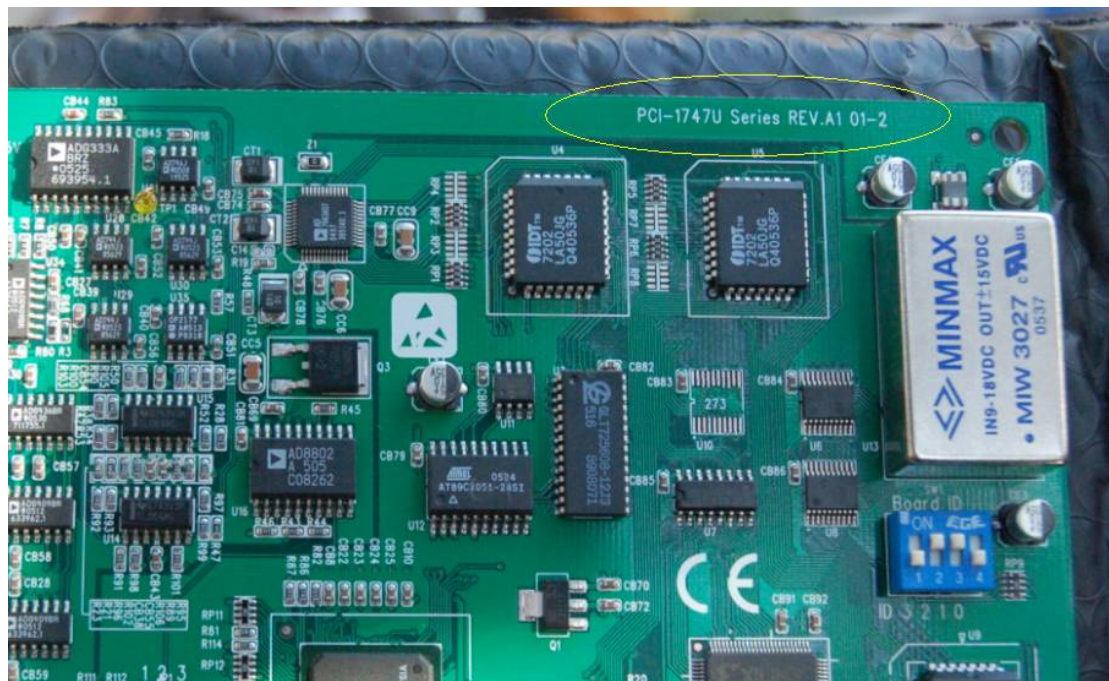
1. Barcode information

Barcode means the IAAXXXXXX on the back of the DAS cards, which is shown on a sticker.



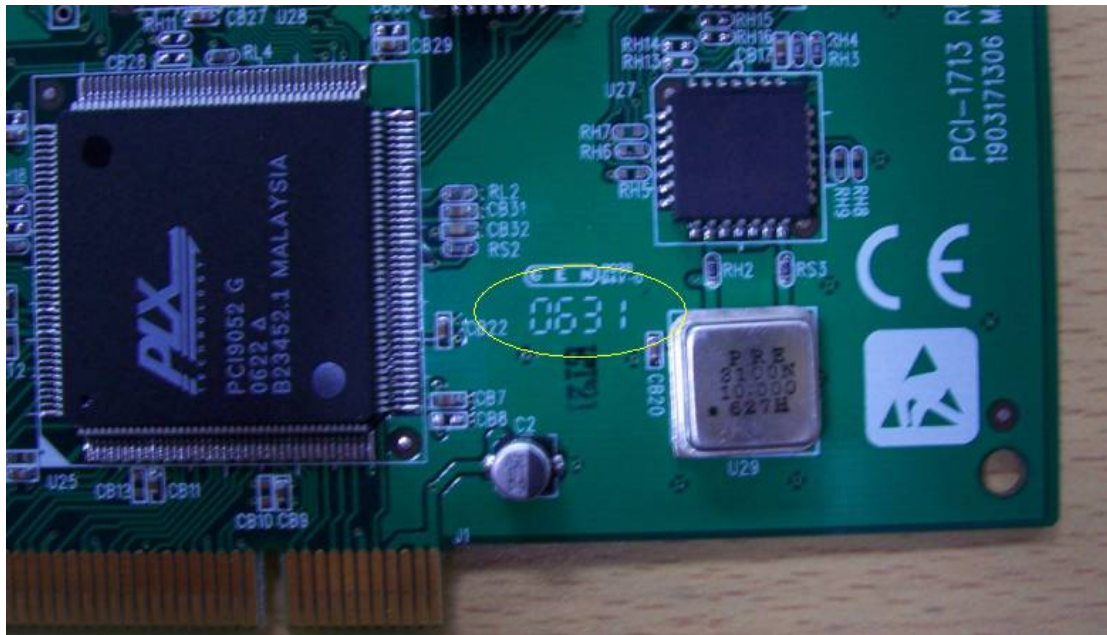
2. PCB version information

Generally, you could check the version of PCB board at the upper edge.



The date to leave to the factory:

For instance, the card shown below is done on the 31st week in 2006.



Other Helpful Information

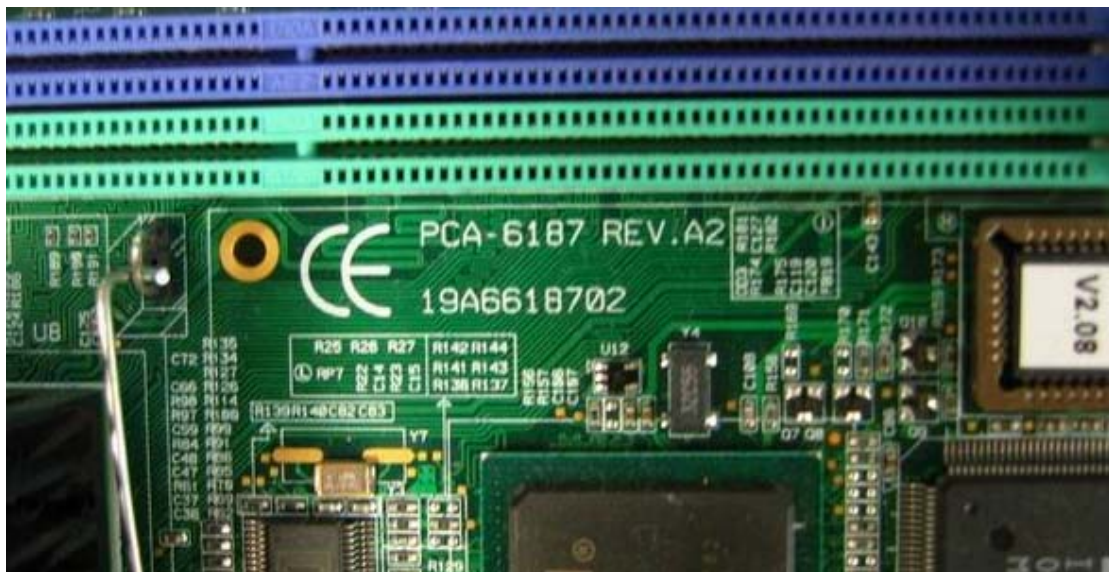
1. The backplane version:

The picture shows the backplane version is PCA-6114P4 REV. A1.02.



2. CPU card version:

As shown below, the version is PCA-6187 REV.A2.



After all, you could know all the information for DAS cards.