

Connect ADAM-5000/6000 Module by TCP in Utility

Product:

ADAM-5000, ADAM-6000 Series

Abstract:

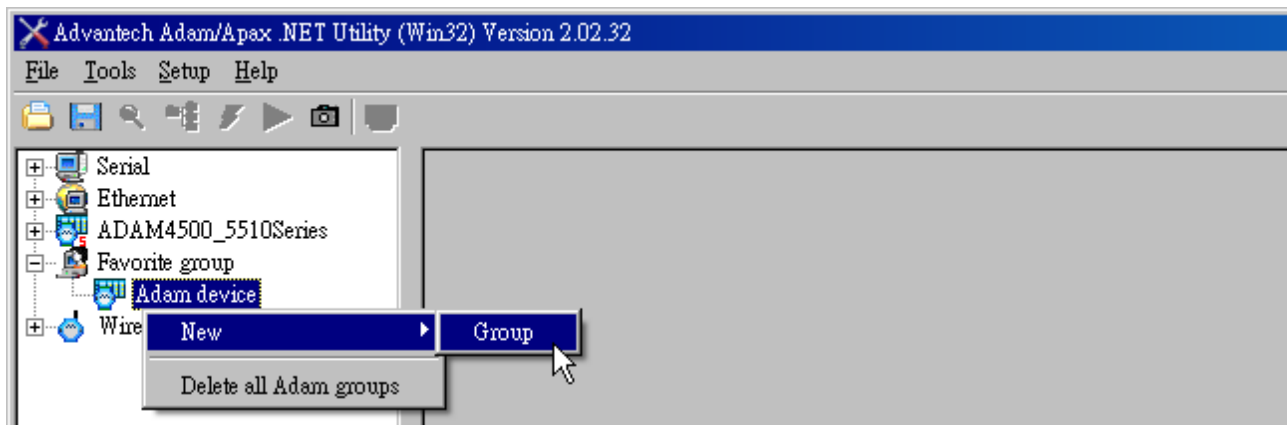
Introduction of connecting ADAM-5000/6000 Series by TCP protocol in utility

Description:

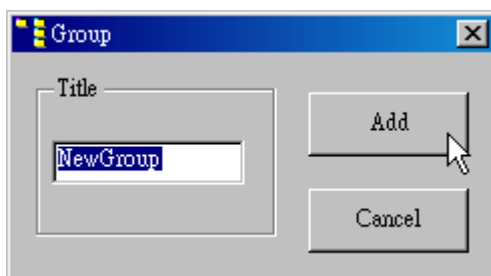
In this document, we will demonstrate how to connect ADAM-5000/6000 module by TCP protocol in Adam/Apax .NET Utility. Since the search function in utility using UDP protocol which may be supported in some application.

Steps:

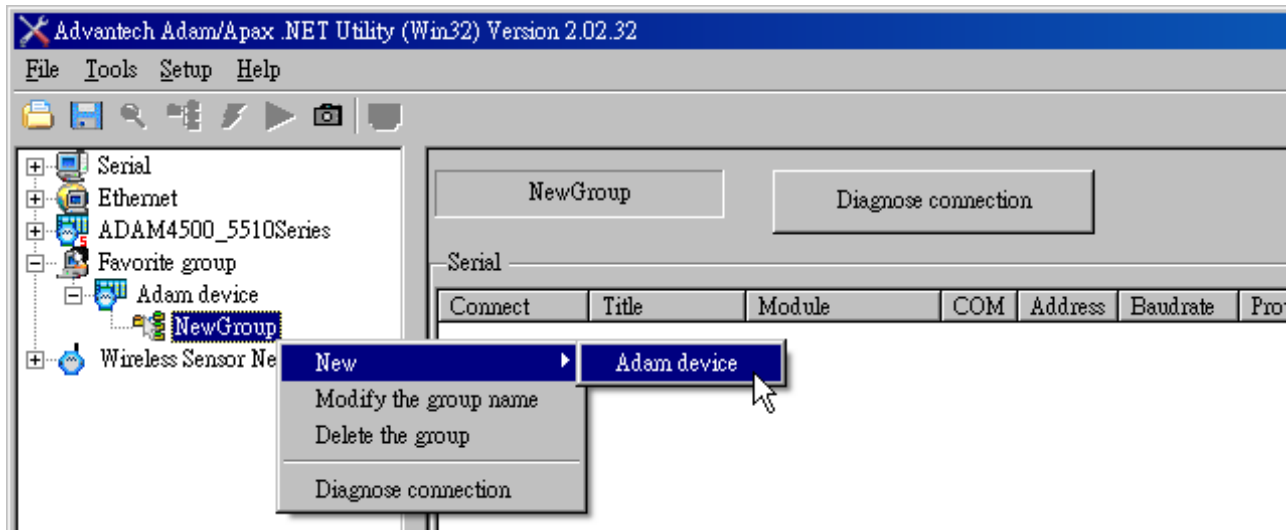
1. Open Adam/Apax .NET Utility, right click “Adam device” under “Favorite group.” Click [New] \ [Group]”



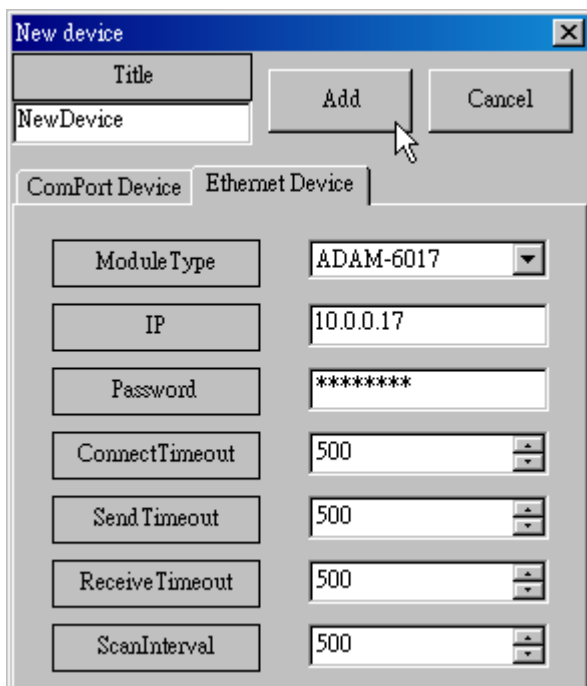
2. Give the group a name and click “Add.”



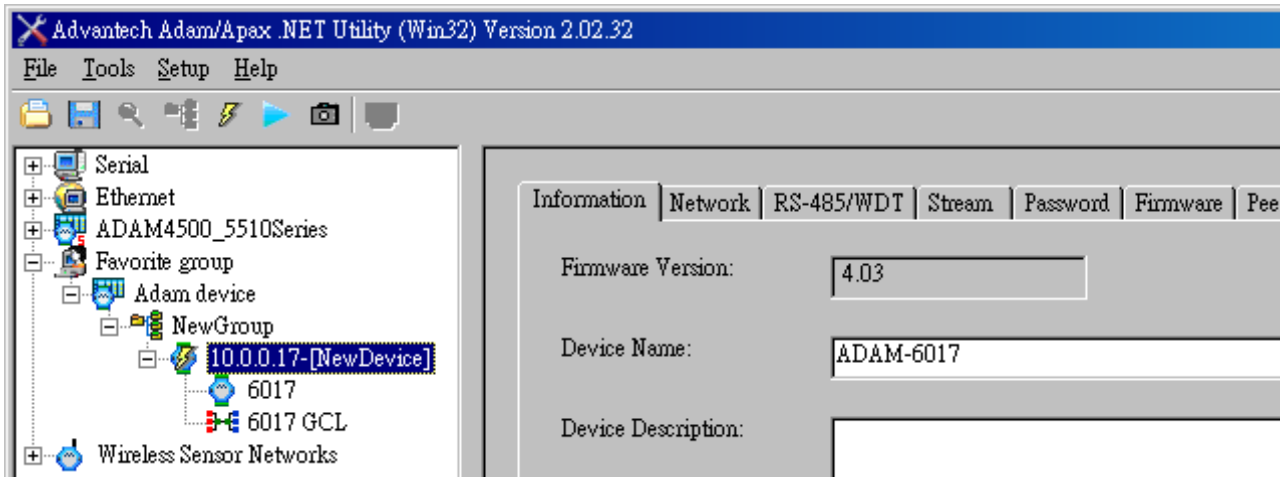
3. Right click “NewGroup” under “Adam device.” Click [New] \ [Adam device]”



4. Give the device a name and click “Ethernet Device” tab. Fill in the information of connected ADAM device then click “Add.”



5. The module has been added in utility successfully.



Written by Alan.Chien, ADAM Product AE, 2012/2/8