

Advantech AE Technical Share Document

Date	2015 / 03 / 31	SR#	1-2040446093
Category	■ FAQ □ SOP	Related OS	ROM-DOS
Abstract	How to connect ADAM-5510KW series by using RS232 or RS485		
Keyword	ADAM-5510KW, connection, RS232, Ethernet		
Related Product	ADAM-5510KW, ADAM-5510EKW ADAM-5510KWTP, ADAM-5510EKWTP		

[Problem]

How do you connect ADAM-5510KWTP if you don't know the IP address or how do you connect ADAM-5510KW by using RS232 or RS485?



[Solution]

Step 1: Set the COM1 of ADAM-5510KW series to be RS-232 interface.

- The COM1 of ADAM-5510KW series is RS-232 or RS-232/RS-485 selectable.
- The COM2 of ADAM-5510KW series is a dedicated RS-485 interface. You can prepare an ADAM-4520 RS232/485 converter to link with the host PC.

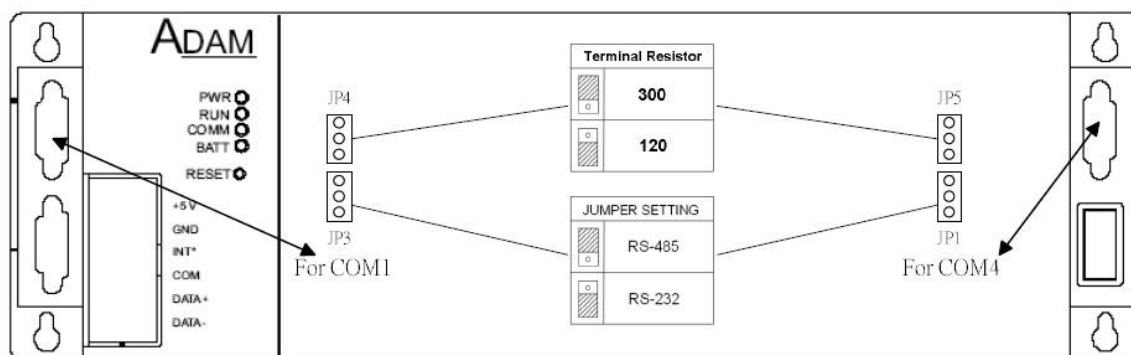


Figure 2-13 COM1/COM4 RS-232/485 Setting

Step 2: ID, baud rate and mode selection by setting DIP switch

➤ COM1 setting

Multiprog via COM1/RS-232:

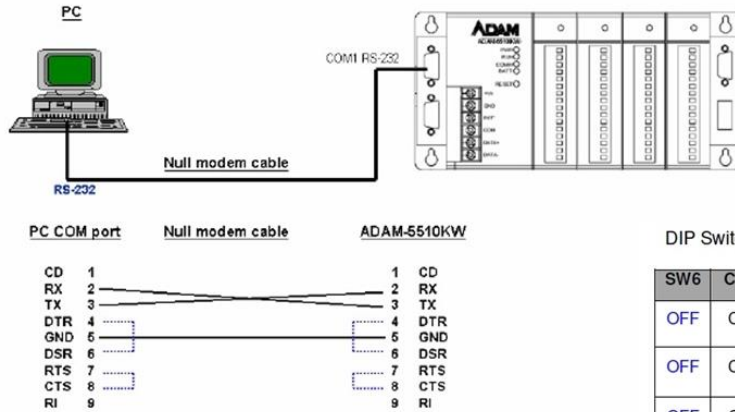


Figure 2-17: Multiprog Protocol via COM1

DIP Switch Setting:

SW6	COM Selection	SW7	SW8	Mode Selection / Baud Rate
OFF	COM1/RS-232	OFF	OFF	Multiprog Protocol / 19200 bps
OFF	COM1/RS-232	ON	OFF	Multiprog Protocol / 19200 bps
OFF	COM1/RS-232	OFF	ON	Multiprog Protocol / 19200 bps

Table 2-12 DIP Switch Setting for Multiprog Protocol via COM1

➤ COM2 setting

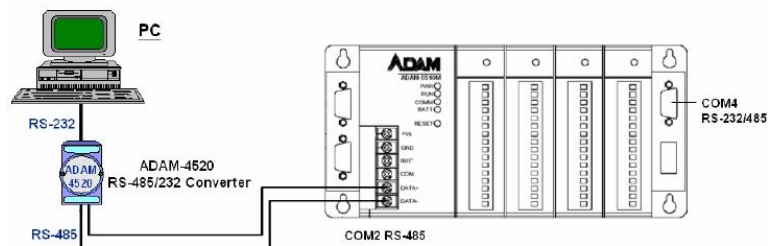


Figure 2-18: Multiprog Protocol via COM2

DIP Switch Setting:

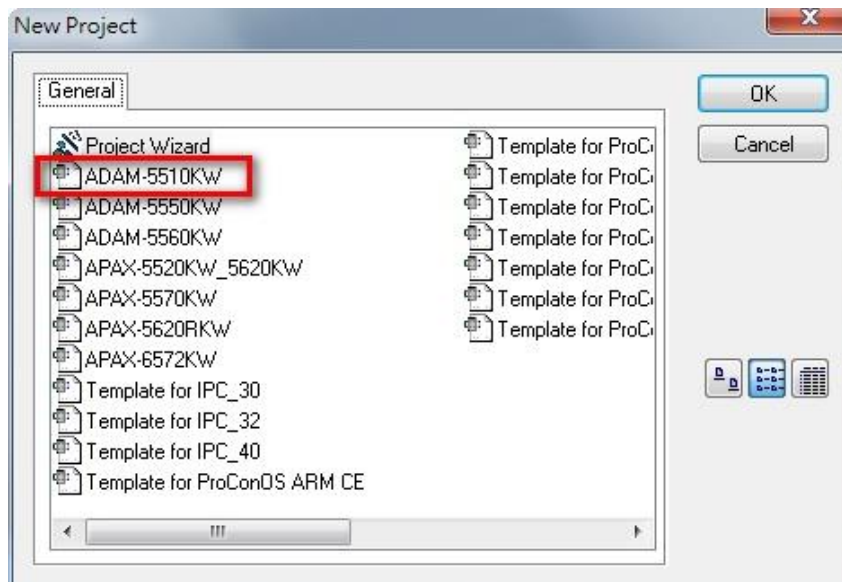
SW6	COM Selection	SW7	SW8	Mode Selection / Baud Rate
ON	COM2/RS-485	OFF	OFF	Multiprog Protocol / 19200 bps
ON	COM2/RS-485	ON	OFF	Multiprog Protocol / 19200 bps
ON	COM2/RS-485	OFF	ON	Multiprog Protocol / 19200 bps

Table 2-13 DIP Switch Setting for Multiprog Protocol via COM2

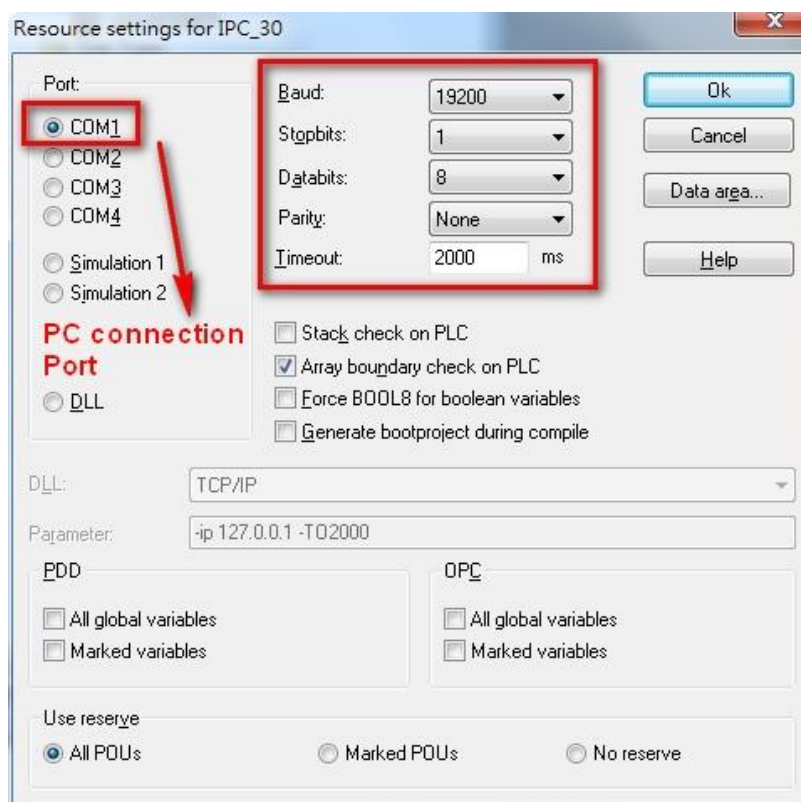
DIP 1	DIP 2	DIP 3	DIP 4	DIP 5	Device ID
On	Off	Off	Off	Off	1

Step 3: Using KW Multiprog to connect ADAM-5510KW series by using RS-232 (COM1 port) or RS-485(COM2 port) of ADAM-5510KW

Create a new ADAM-5510KW project and change the resource setting as below

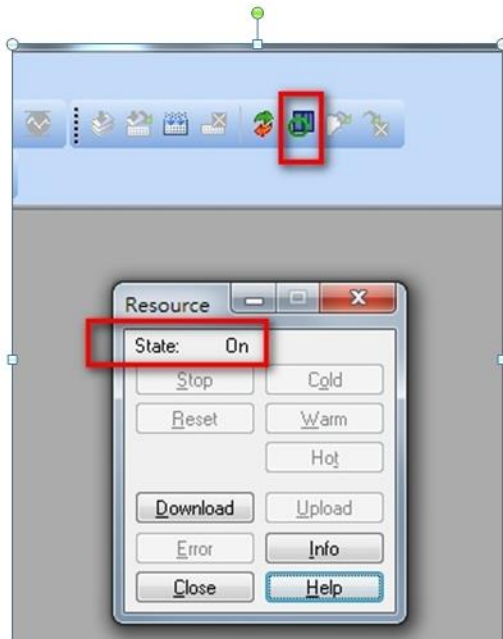


Port: Choose the host PC COM number



Step 4: Check the connection status by project control dialog

On: successful connection



Timeout: failed connection

