

Advantech AE Technical Share Document

Date	2015/03/26	SR#	1-2040686215
Category	<input type="checkbox"/> FAQ <input checked="" type="checkbox"/> SOP	Related OS	N/A
Abstract	ADAM-60XX and ADAM-62XX_How to reset the password		
Keyword	ADAM-60XX, ADAM-62XX, Password, Reset.		
Related Product	ADAM-6K, ADAM-62XX and ADAM-5000(L)/TCP		

■ Problem Description:

This documentation shows how to reset the password of ADAM-60XX and ADAM-62XX series.

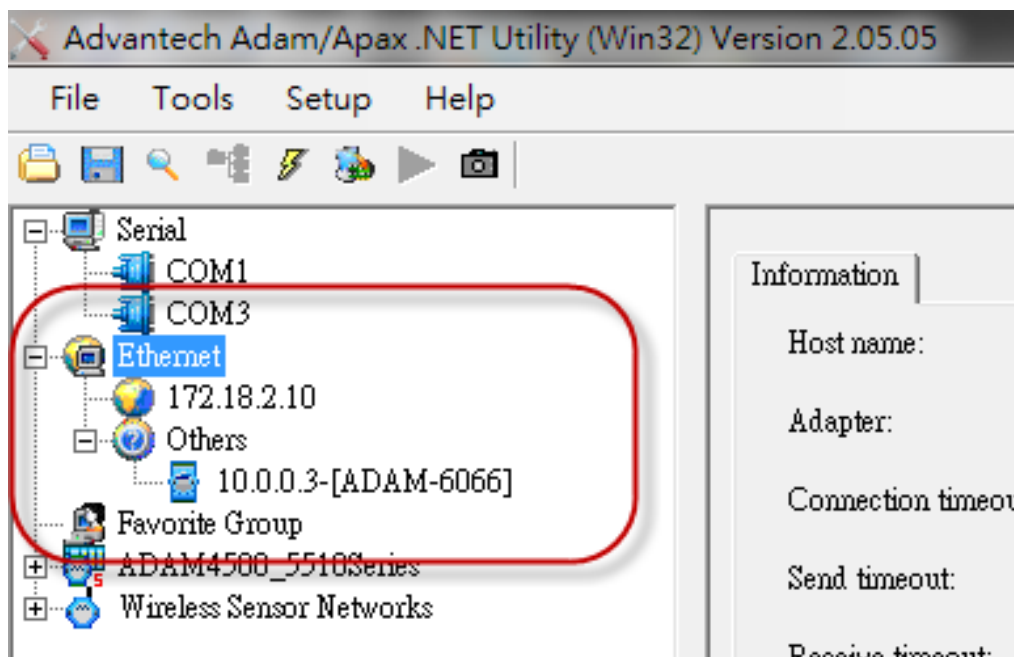
■ Brief Solution - Step by Step:

1. Check the IP of the ADAM module
2. Change the configuration of PC network card under the same network domain as ADAM module
3. Use the utility to search ADAM again
4. Reset the password by utility

[Steps]

Check the IP of the ADAM module

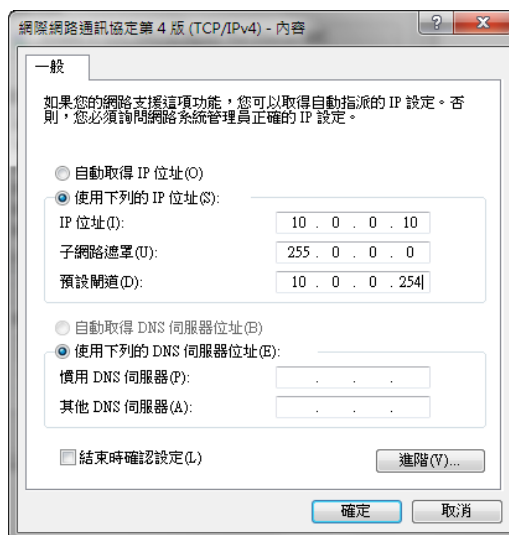
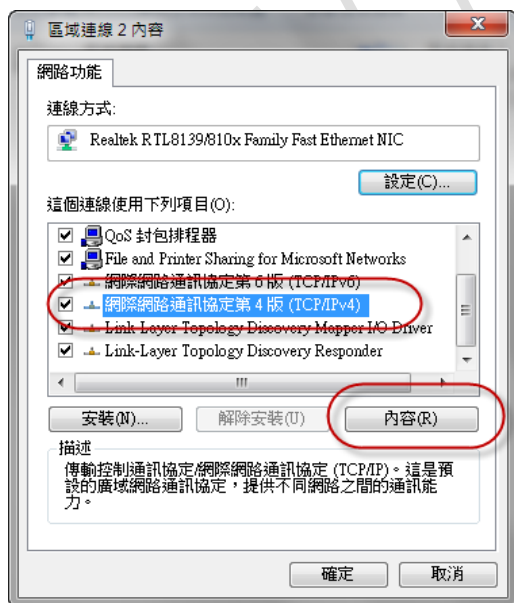
1. Use the Advantech .NET utility to search the ADAM module.
2. You can see the IP of ADAM module in "other" group if it's not in the same network domain as your network card.



Change the configuration of PC network card under the same network domain as ADAM module

Enter the control panel of the network card of your PC.

For this example, since the IP of ADAM is "10.0.0.3", please change the IP of your network card into "10.0.0.X"

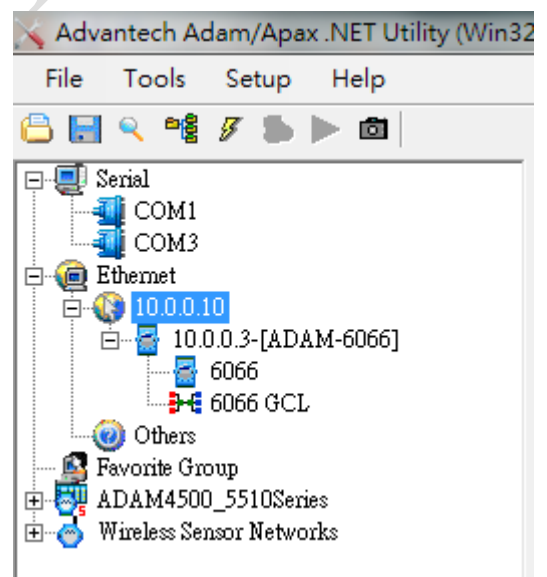
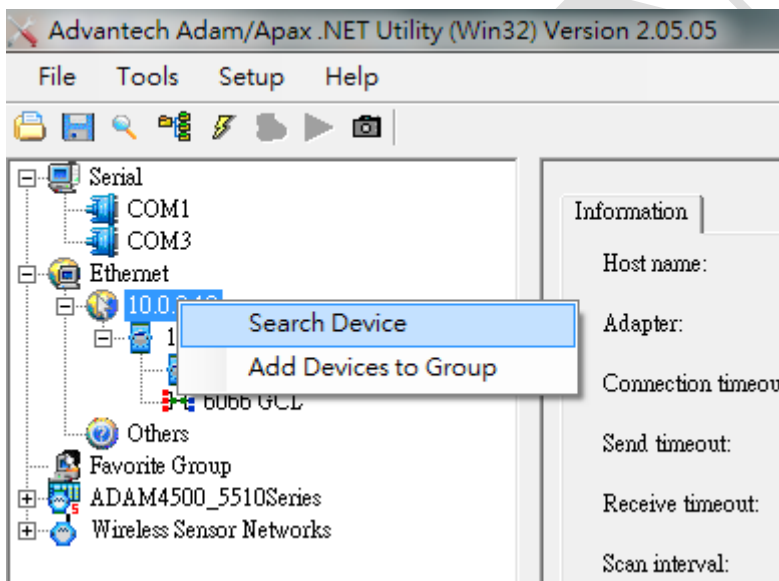
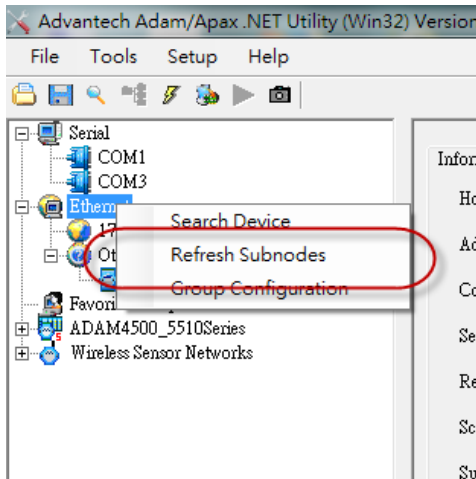


Use the utility to search ADAM again

Open the Advantech .NET utility again, right click on the “Ethernet” icon then select “Refresh Subnodes”

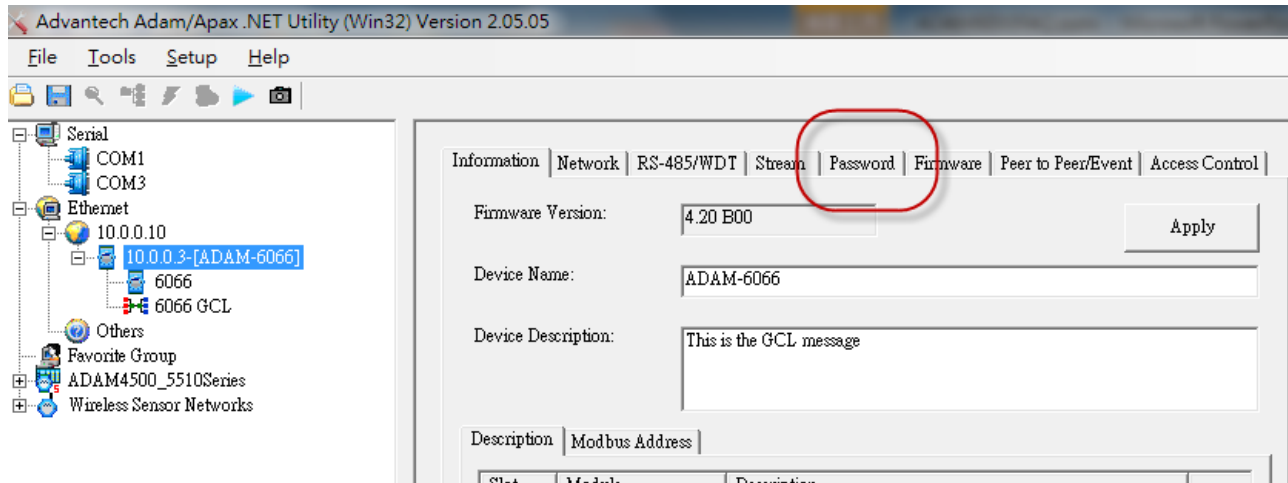
Search the device again

You should be the ADAM module under the same domain as your network card

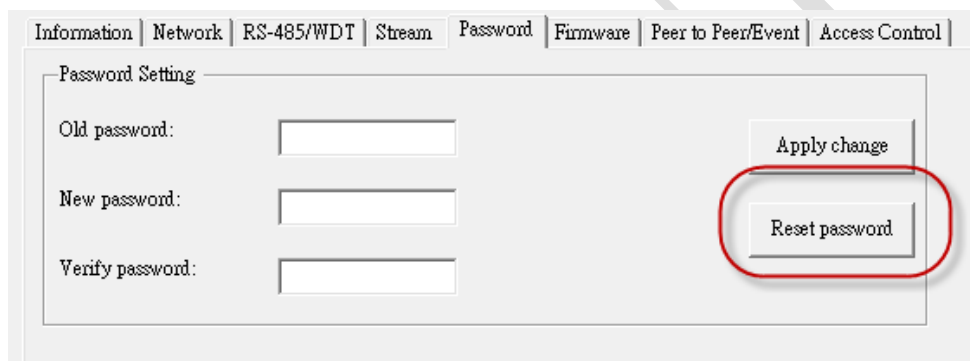


Reset the password by utility

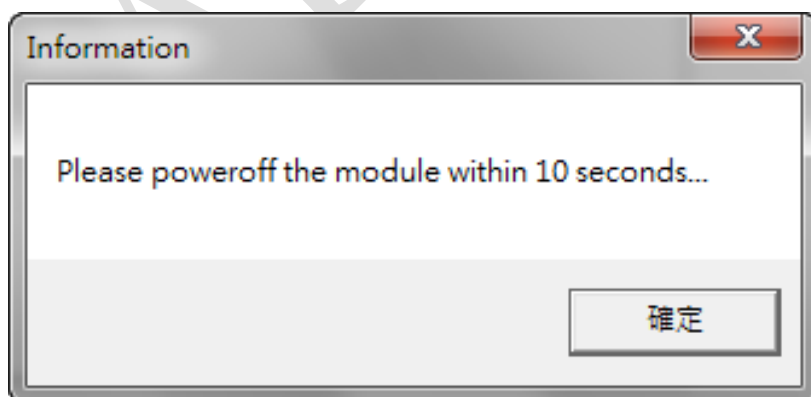
Select the “password” tab in the utility



Click the “reset password” button



The pop-out window shows “please power off the module within 10 seconds”



Please reboot the power of ADAM module

The password of ADAM module have been reset to “00000000”