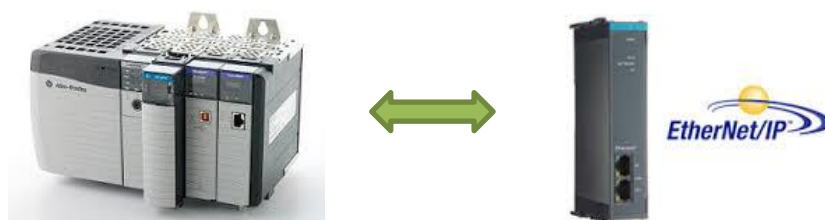


Advantech AE Technical Share Document

Date	2015 / 07 / 17	SR#	1-2120491630
Category	■ FAQ □ SOP	Related OS	Win X86
Abstract	How to use RS Logix 5000 to control APAX-5072		
Keyword	APAX-5072, Ethernet IP		
Related Product	APAX-5072		

[Problem]

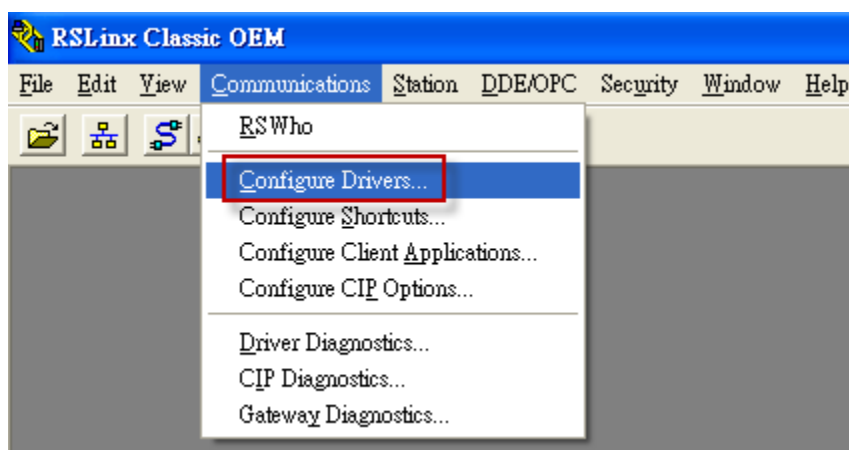
How to use RS Logix 5000 to control APAX-5072?

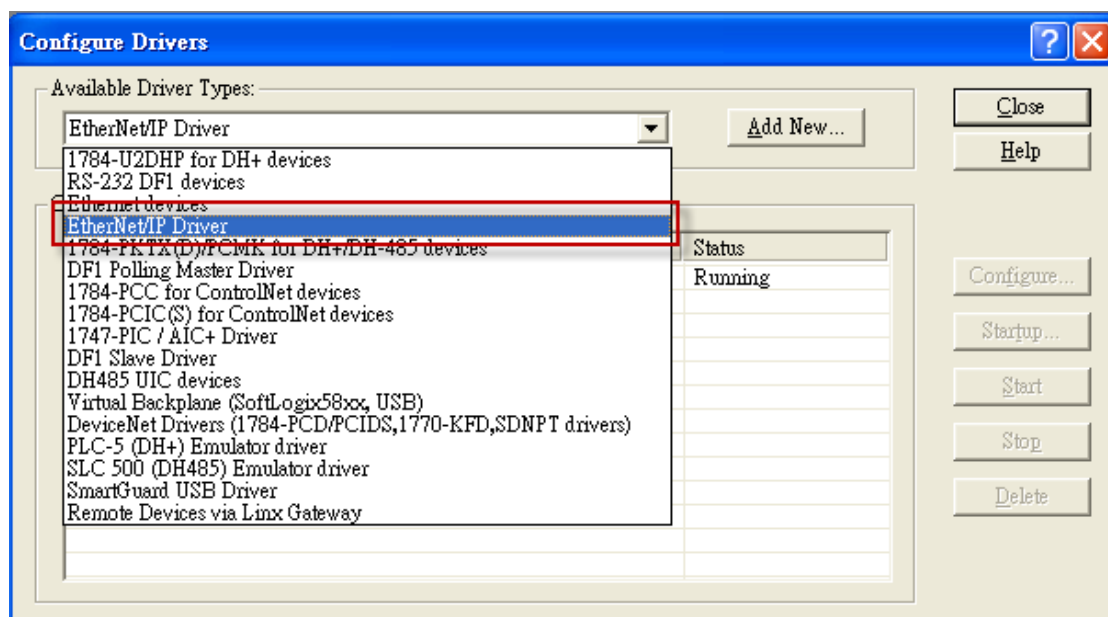


[Solution]

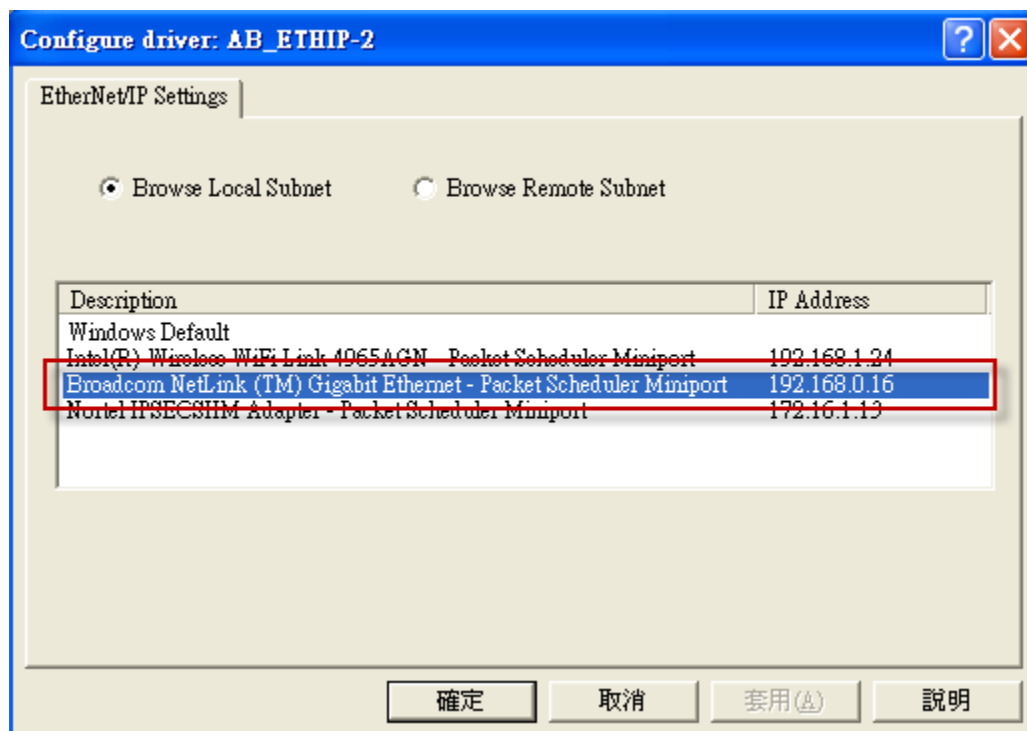
Please follow the steps below to know how to use RS Logix 5000 to control APAX-5072 Ethernet/IP coupler

1. Open RSLinx to configure drivers.

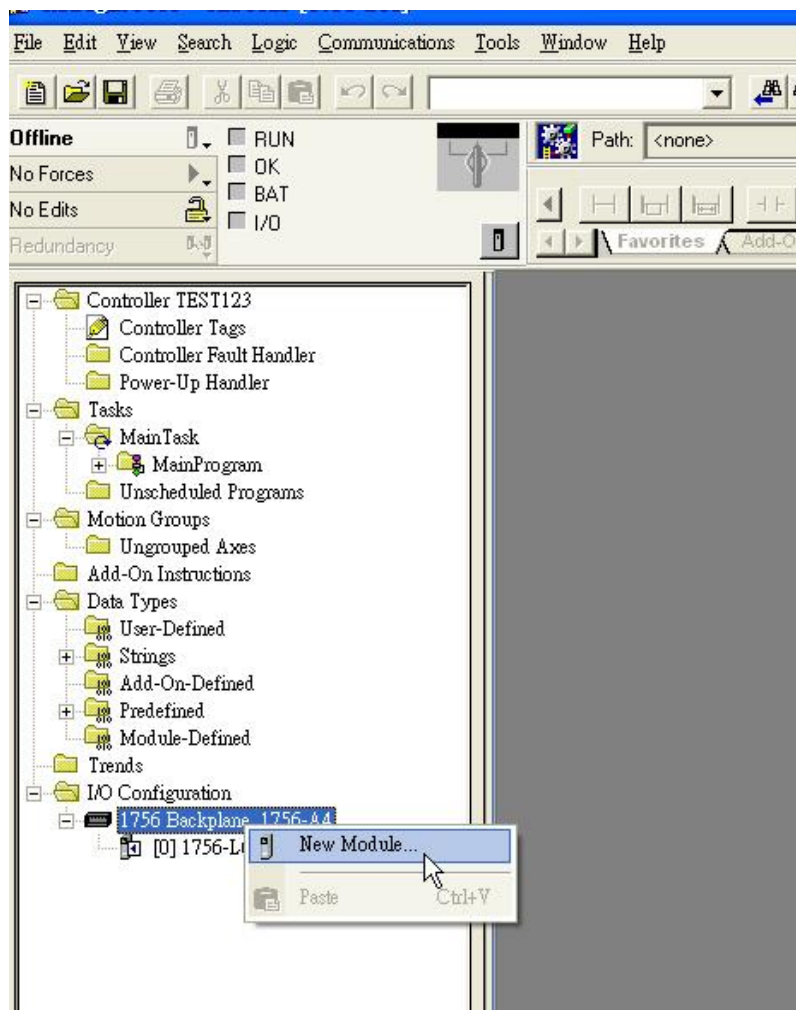
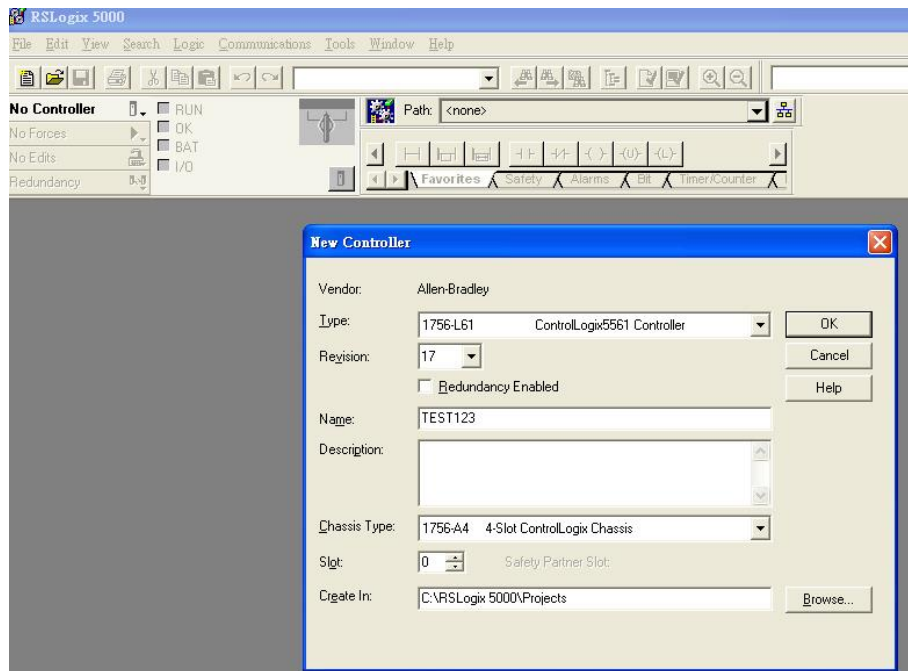


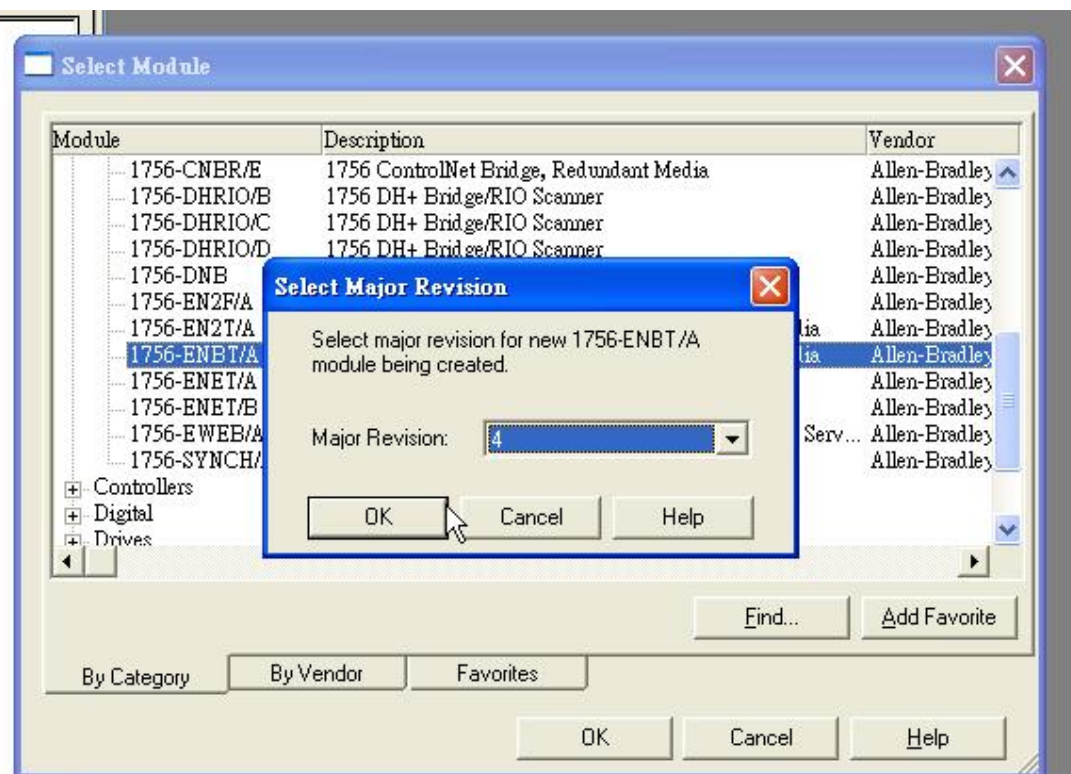
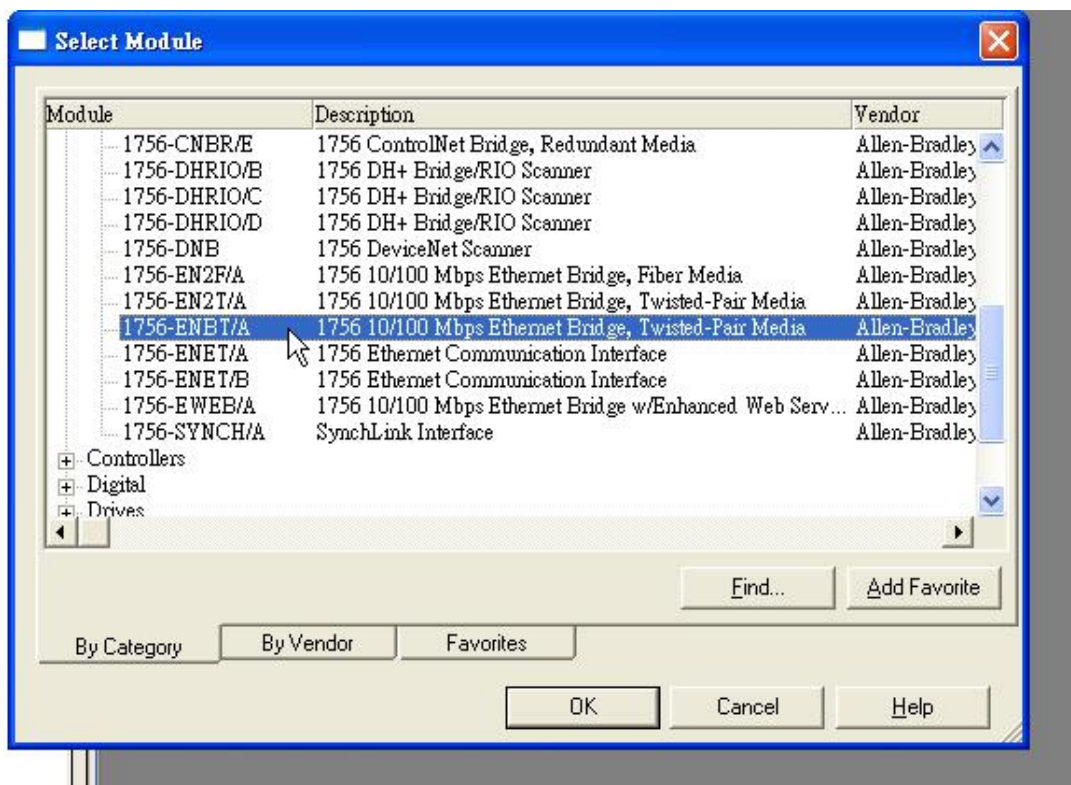


Select your LAN port

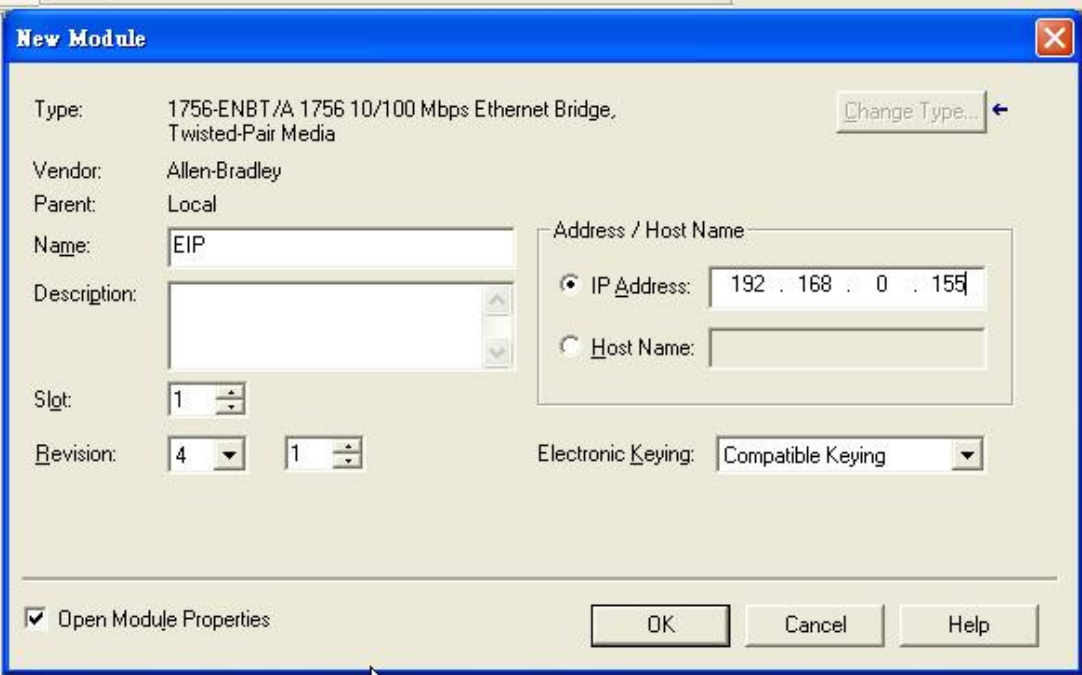


2. Open RSLogix 5000 and create New Controller





3. Configure it and save it as L5K file



New Module

Type: 1756-ENBT/A 1756 10/100 Mbps Ethernet Bridge, Twisted-Pair Media Change Type...

Vendor: Allen-Bradley

Parent: Local

Name: EIP

Description:

Slot: 1

Revision: 4 1

Address / Host Name:

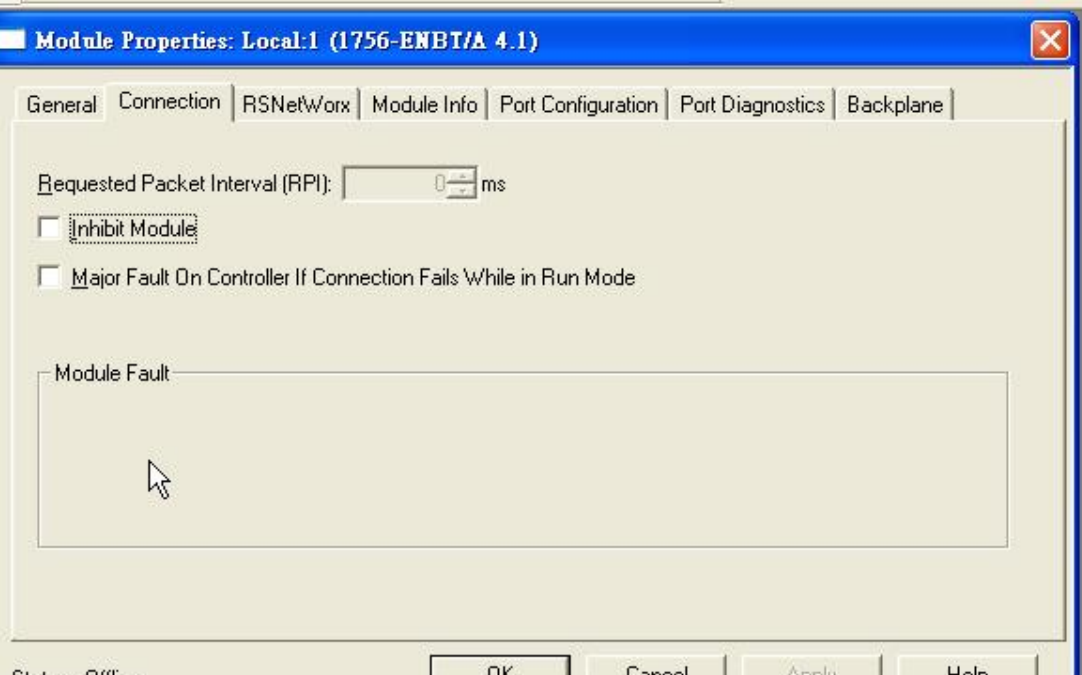
☒ IP Address: 192 . 168 . 0 . 155

☐ Host Name:

Electronic Keying: Compatible Keying

☒ Open Module Properties

OK Cancel Help



Module Properties: Local:1 (1756-ENBT/A 4.1)

General Connection RSNetWorx Module Info Port Configuration Port Diagnostics Backplane

Requested Packet Interval (RPI): 0 ms

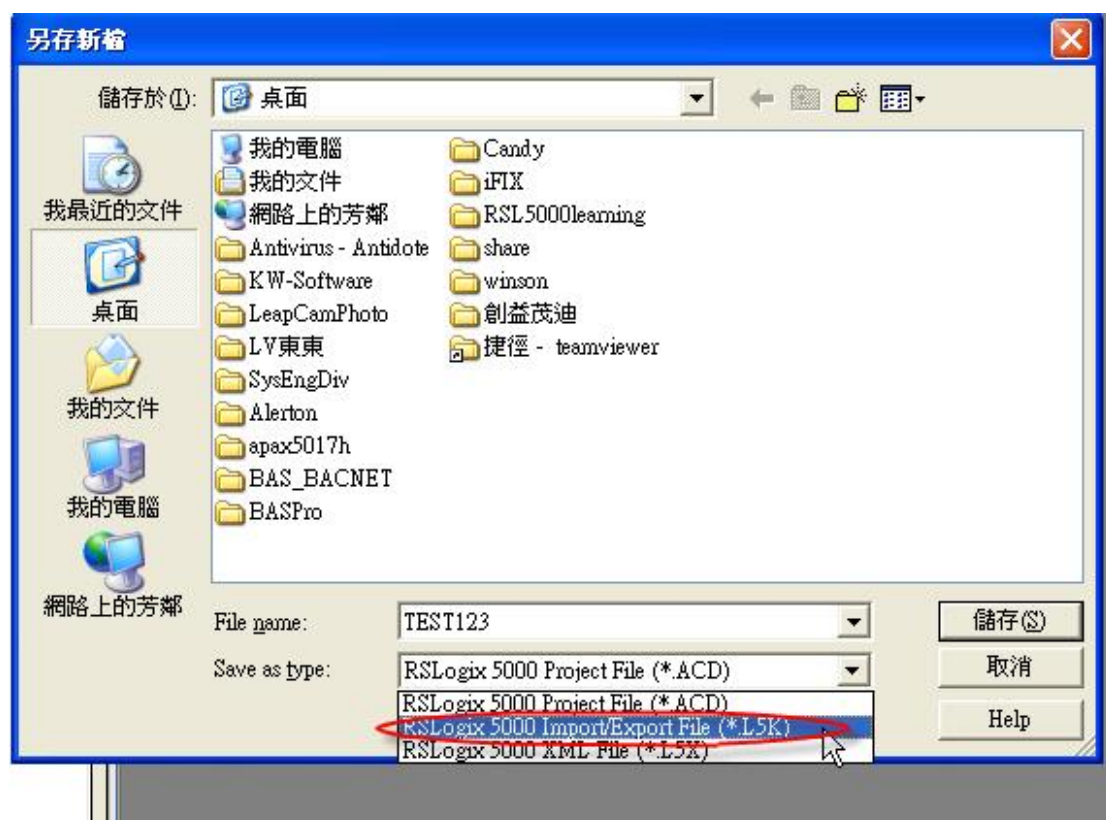
☐ Inhibit Module

☐ Major Fault On Controller If Connection Fails While in Run Mode

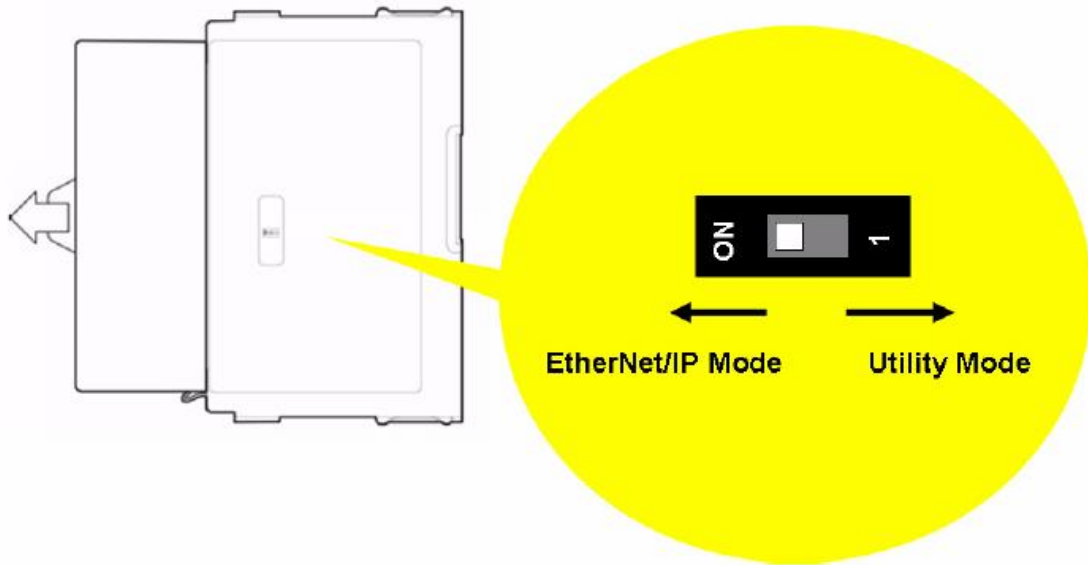
Module Fault

Status: Offline

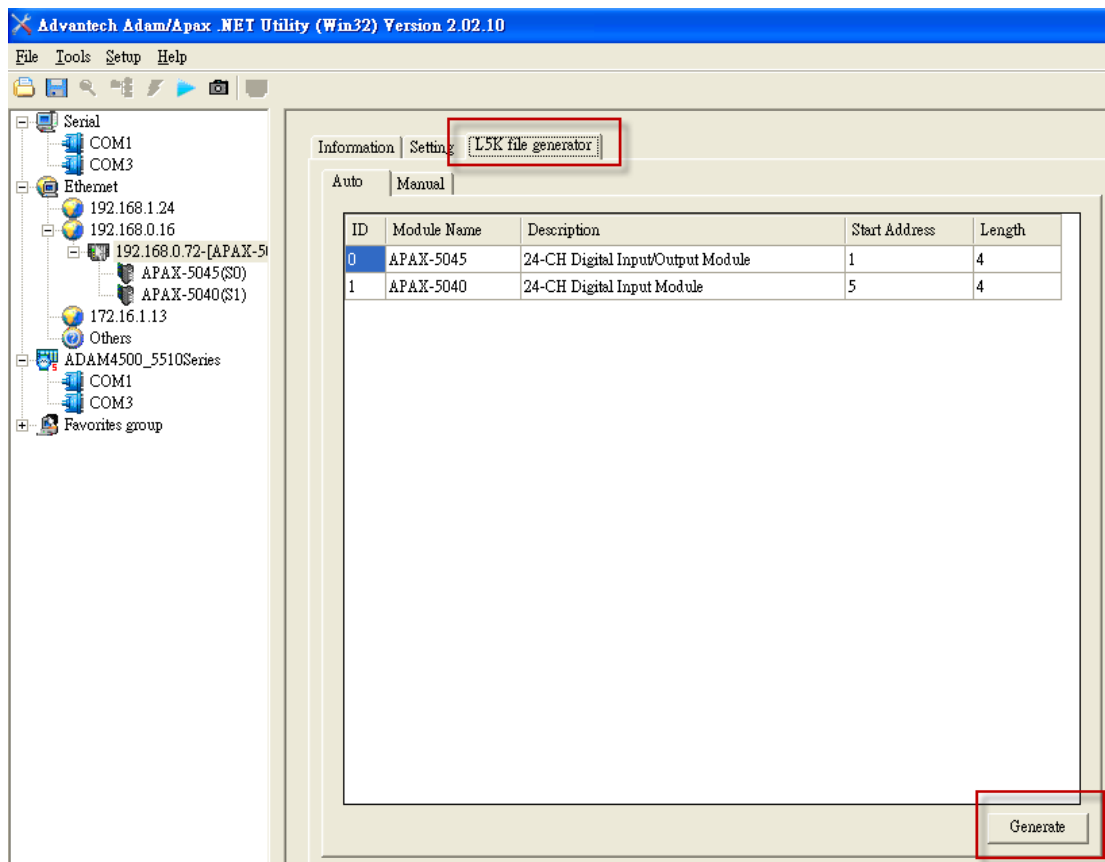
OK Cancel Apply Help

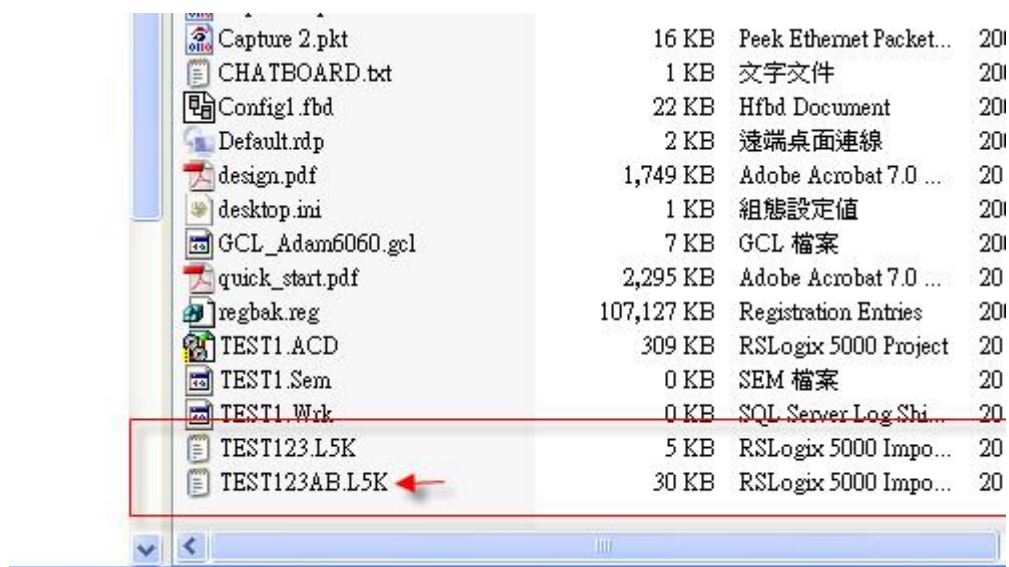


4. Configure APAX-5072 to Utility mode

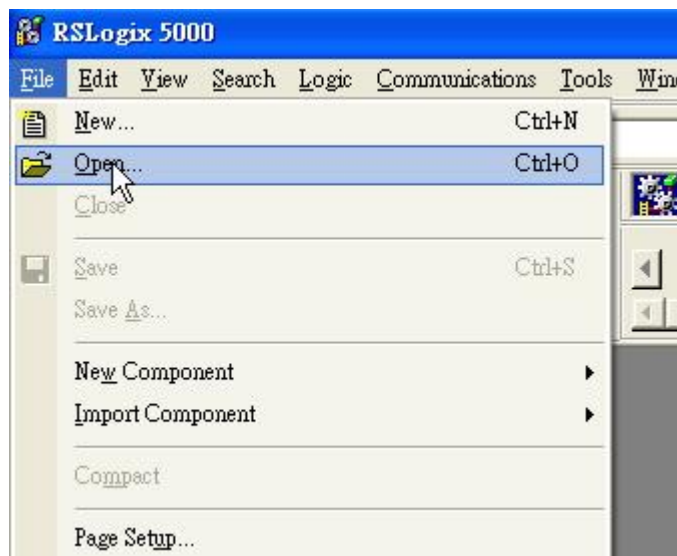


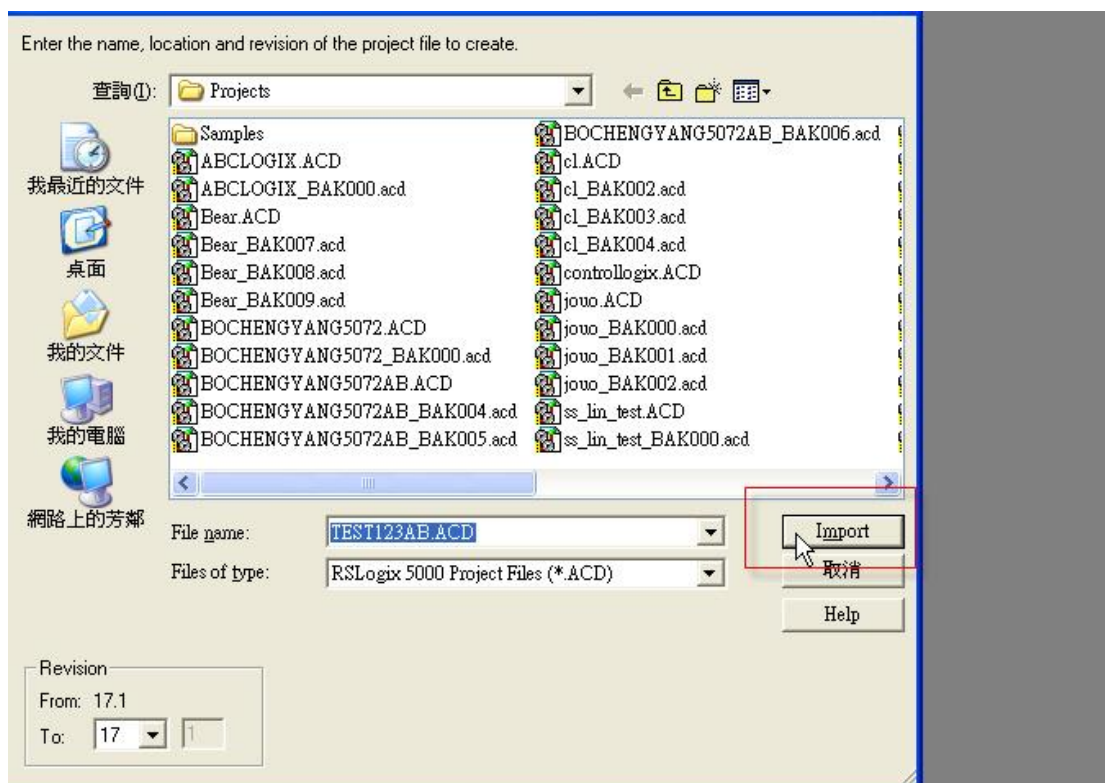
5. Use ADAM/APAX .Net Utility to generate the L5K file. (Please select the L5K file you created before.)



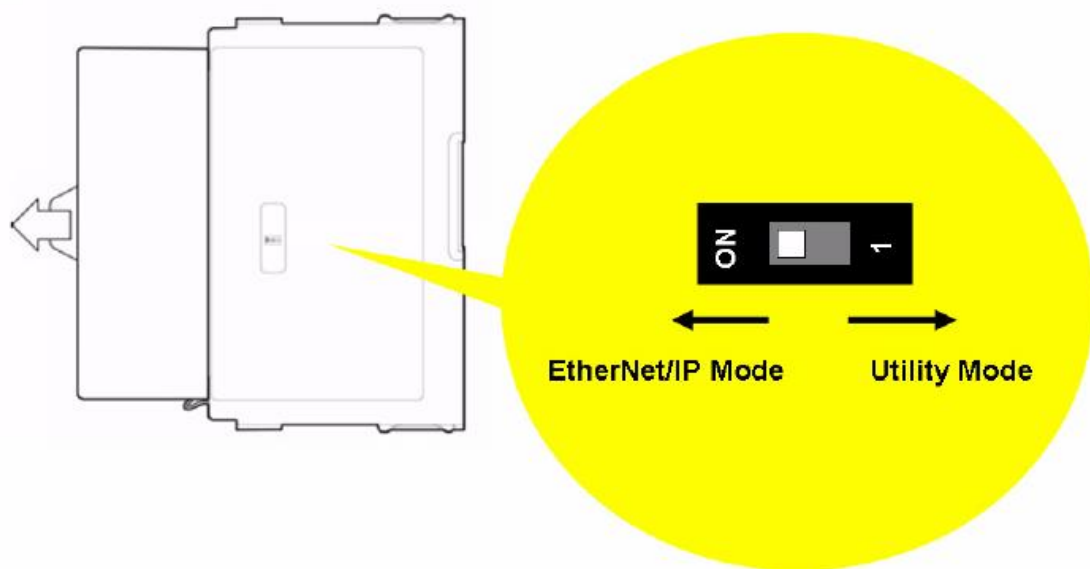


- Open the L5k file which is created in ADAM/APAX .Net Utility in RSLogix 5000 and save it to *.ACD project file

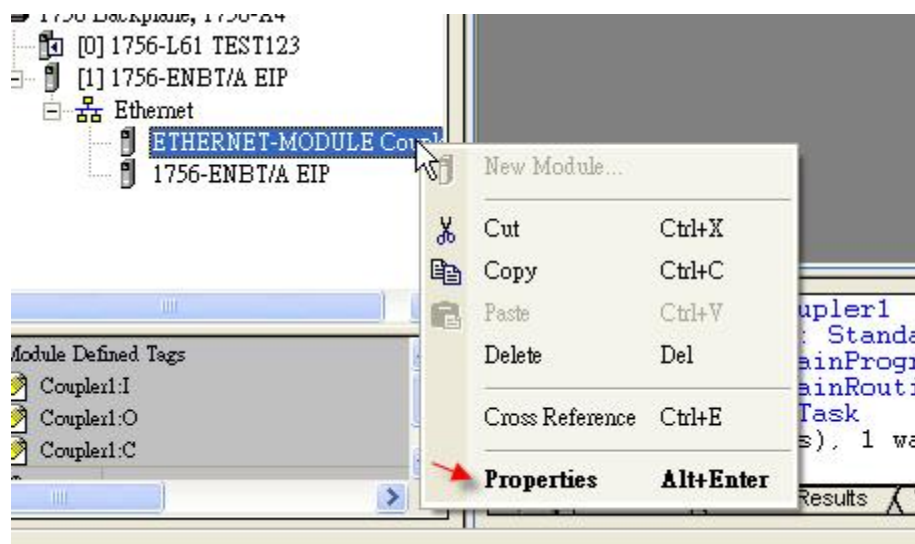




7. Change the APAX-5072 to Ethernet/IP mode



8. You could check the configuration of APAX-5072



Module Properties: EIP (ETHERNET-MODULE 1.1)

General | Connection | Module Info

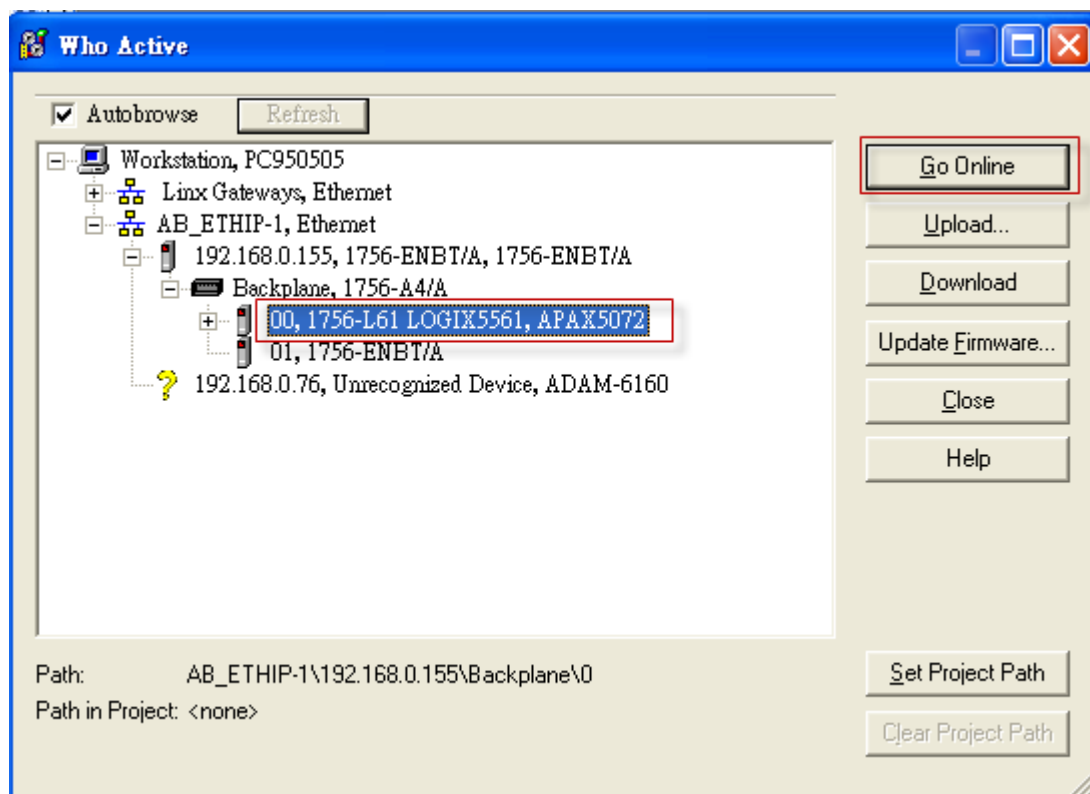
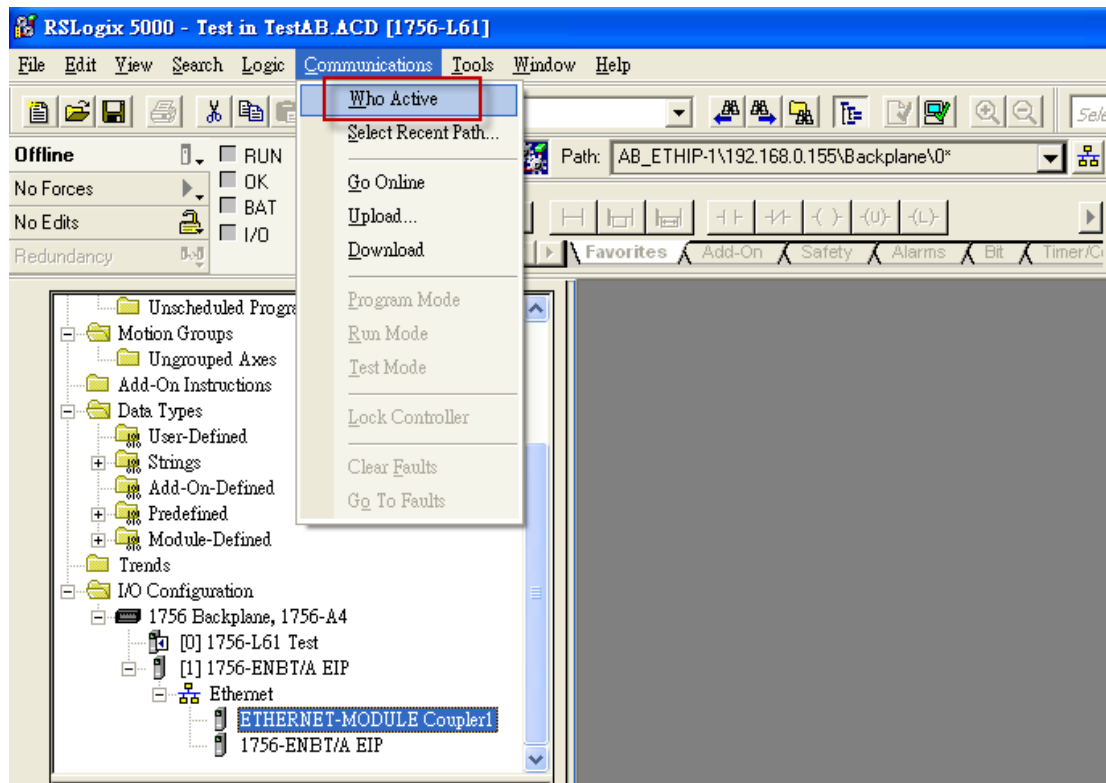
Type: ETHERNET-MODULE Generic Ethernet Module
 Vendor: Allen-Bradley
 Parent: EIP
 Name: Coupler1
 Description:
 Comm Format: Data - INT
 Address / Host Name
☒ IP Address: 192 . 168 . 0 . 72
☐ Host Name:
 Connection Parameters
 Input: 102 8 (16-bit)
 Output: 101 8 (16-bit)
 Configuration: 100 0 (8-bit)
 Status Input:
 Status Output:
 Status: Offline
 OK Cancel Apply Help

Module Properties: EIP (ETHERNET-MODULE 1.1)

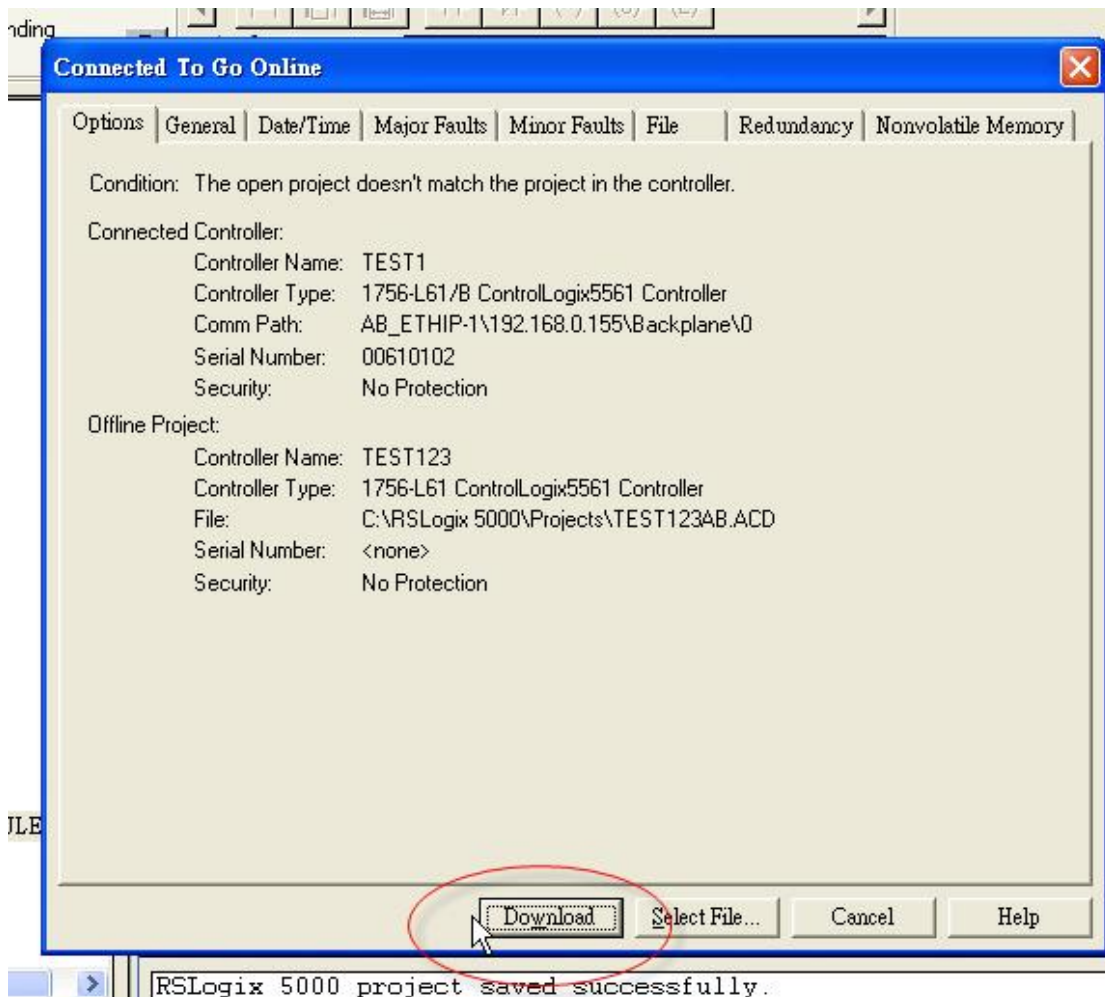
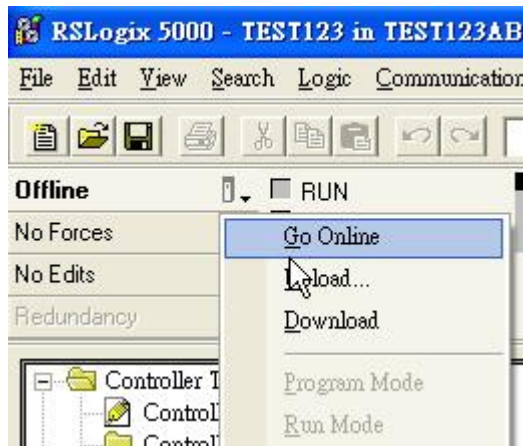
General | Connection* | Module Info

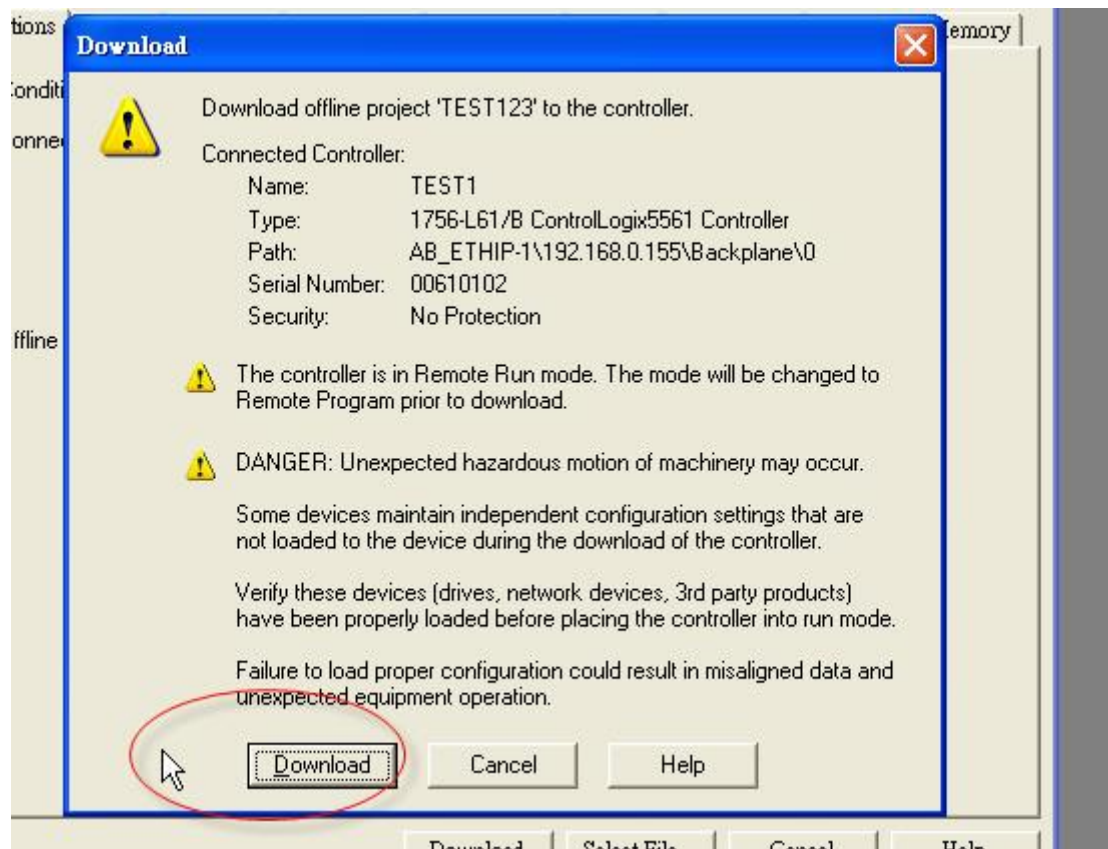
Requested Packet Interval (RPI): 100 ms (1.0 - 3200.0 ms)
☐ Inhibit Module
☐ Major Fault On Controller If Connection Fails While in Run Mode
 Module Fault
 Status: Offline
 OK Cancel Apply Help

9. Check Who Active and Go Online



10. Download the project to AB PLC





11. You could try to control the DO channel in Control Tag

