

## Advantech AE Technical Share Document

Date	2015/04/28	SR#	1-2040686313
Category	<input type="checkbox"/> FAQ <input checked="" type="checkbox"/> SOP	Related OS	N/A
Abstract	ADAM-60XX and ADAM-62XX_How to use Wireshark to collect the packet		
Keyword	ADAM-6K, ADAM-62XX, Wireshark, Collect packet		
Related Product	ADAM-6K, ADAM-62XX and ADAM-5000(L)/TCP		

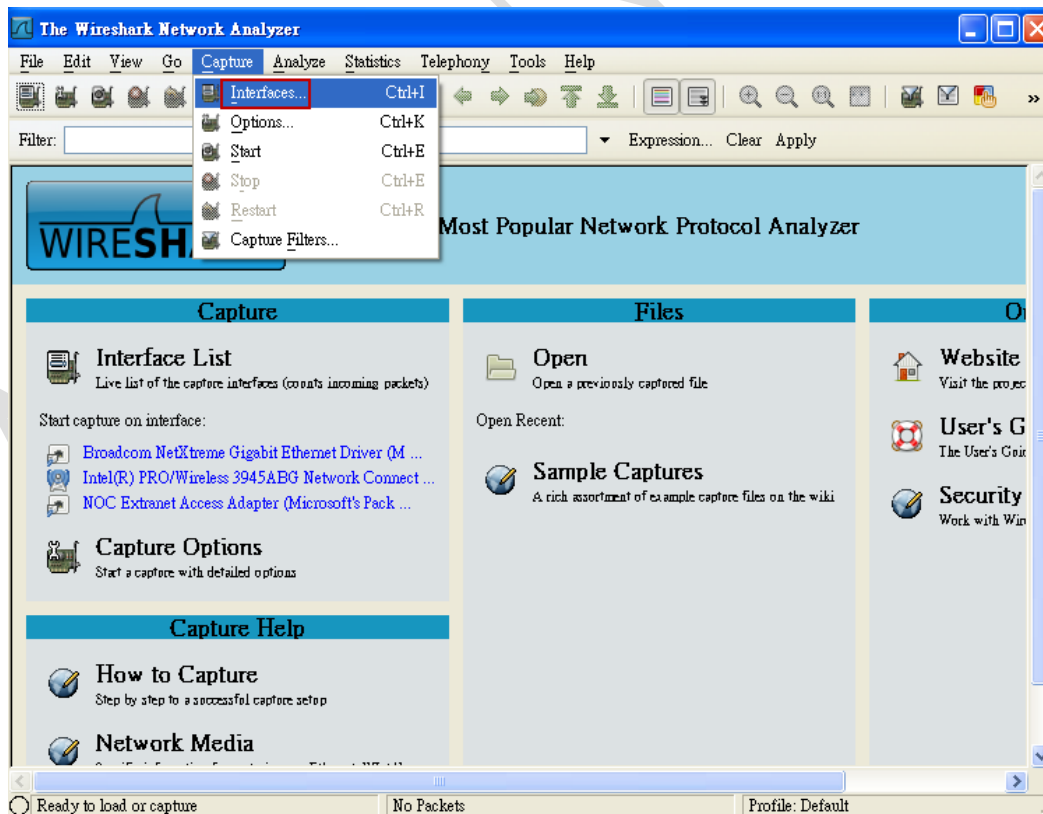
### ■ Problem Description:

This documentation shows how to use third-party software Wireshark to collect the Ethernet packet.

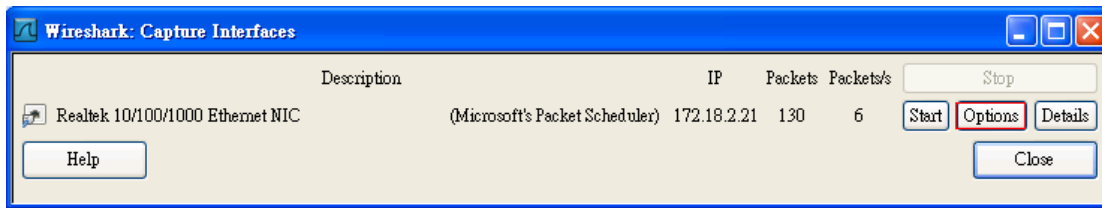
### ■ Brief Solution - Step by Step:

#### [Steps]

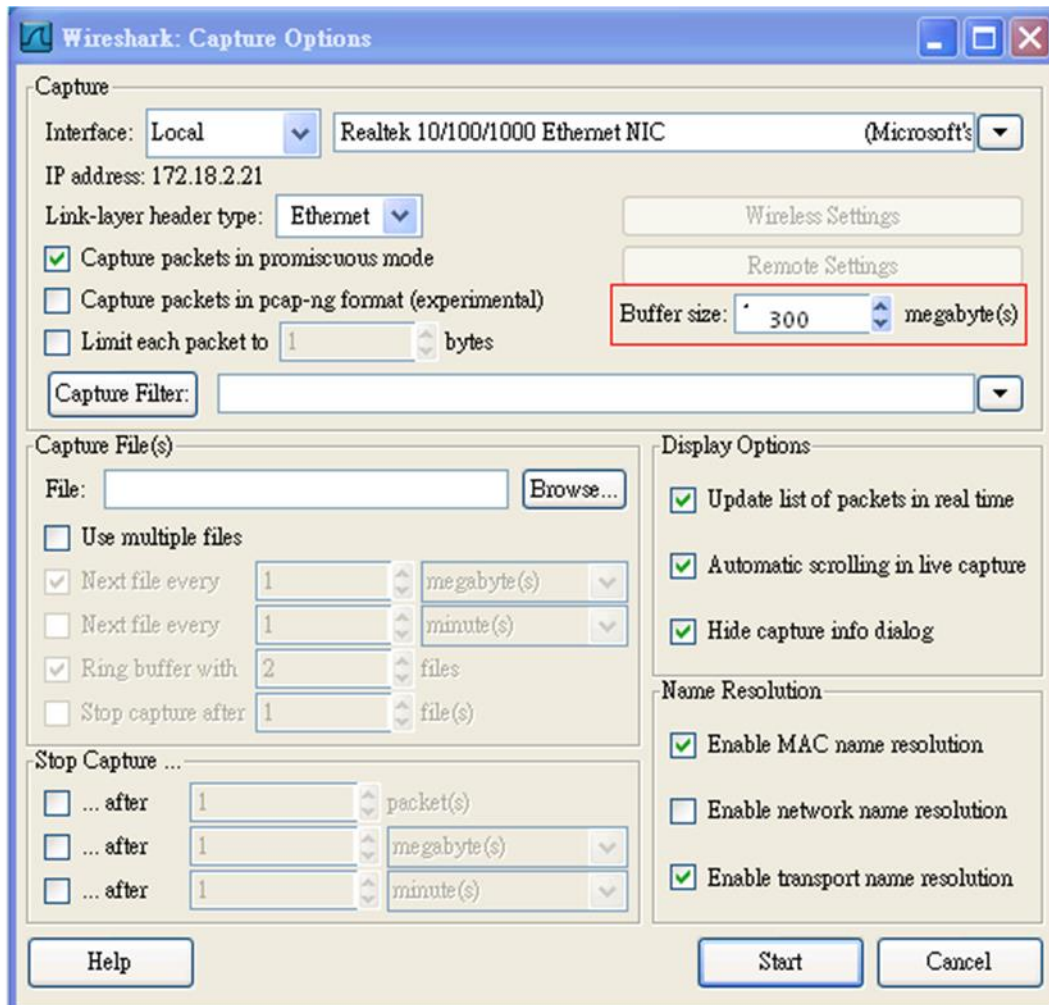
**Step1:** Launch WireShark, click "Capture" and then select "Interface ..."



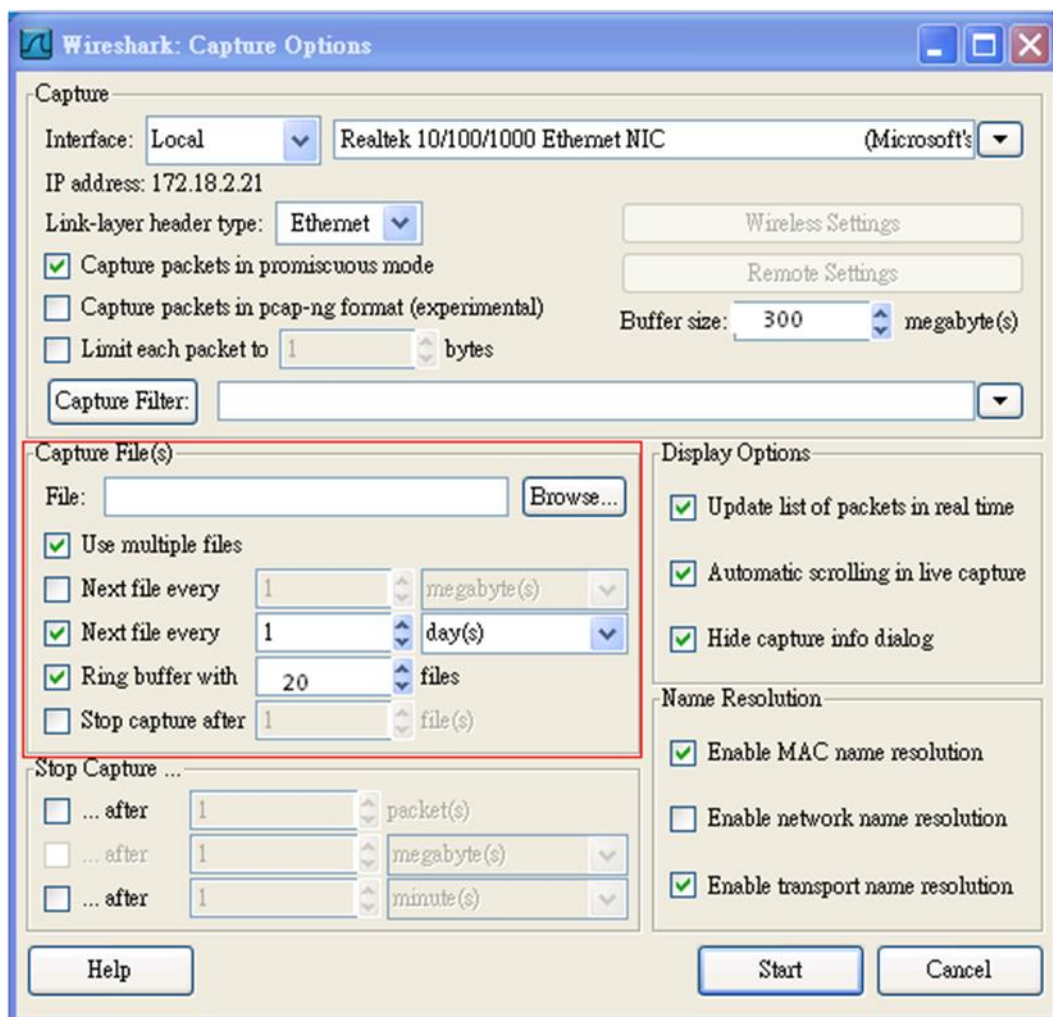
**Step2:** Select “Options” to set up the conditions for packet capturing.



**Step3:** Change “Buffer Size” to adjust the temporary storage space for Ethernet Packets.



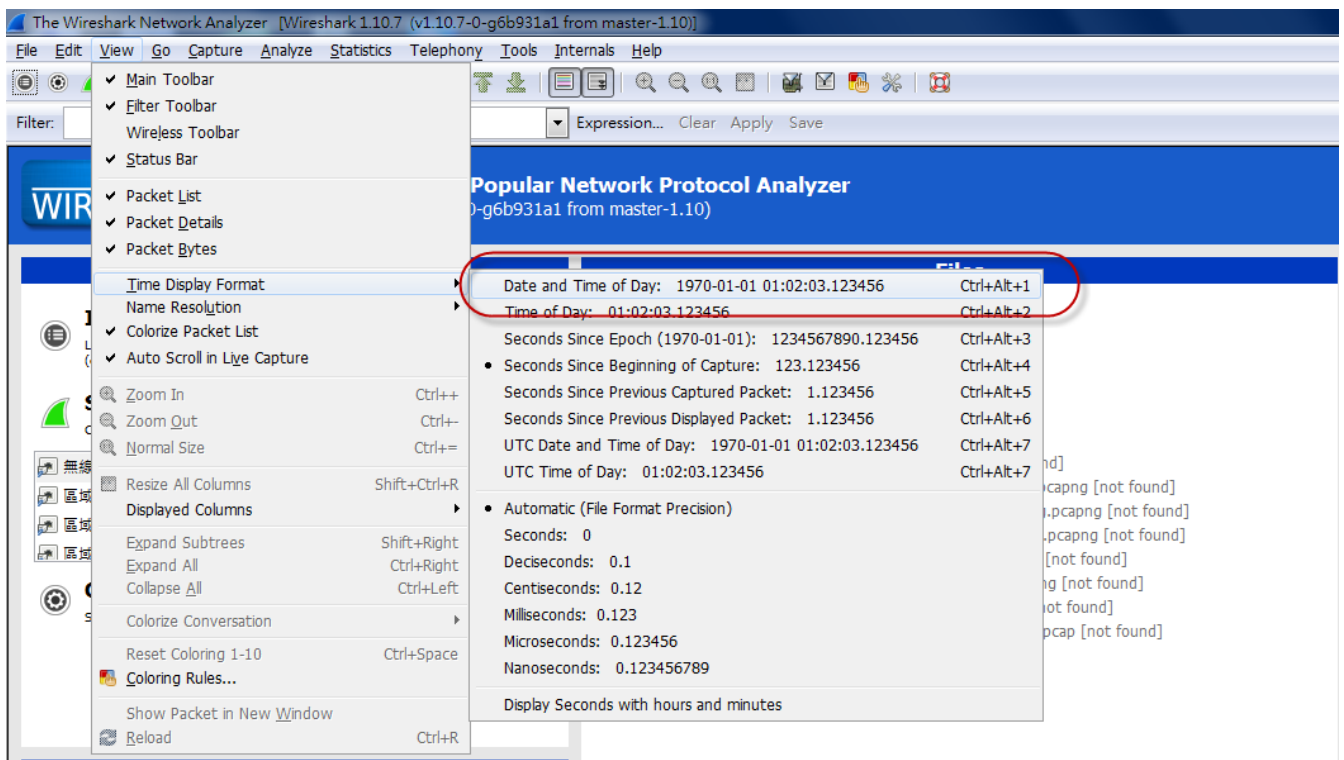
**Step4:** Select “Use multiple files” to set up conditions for file saving.



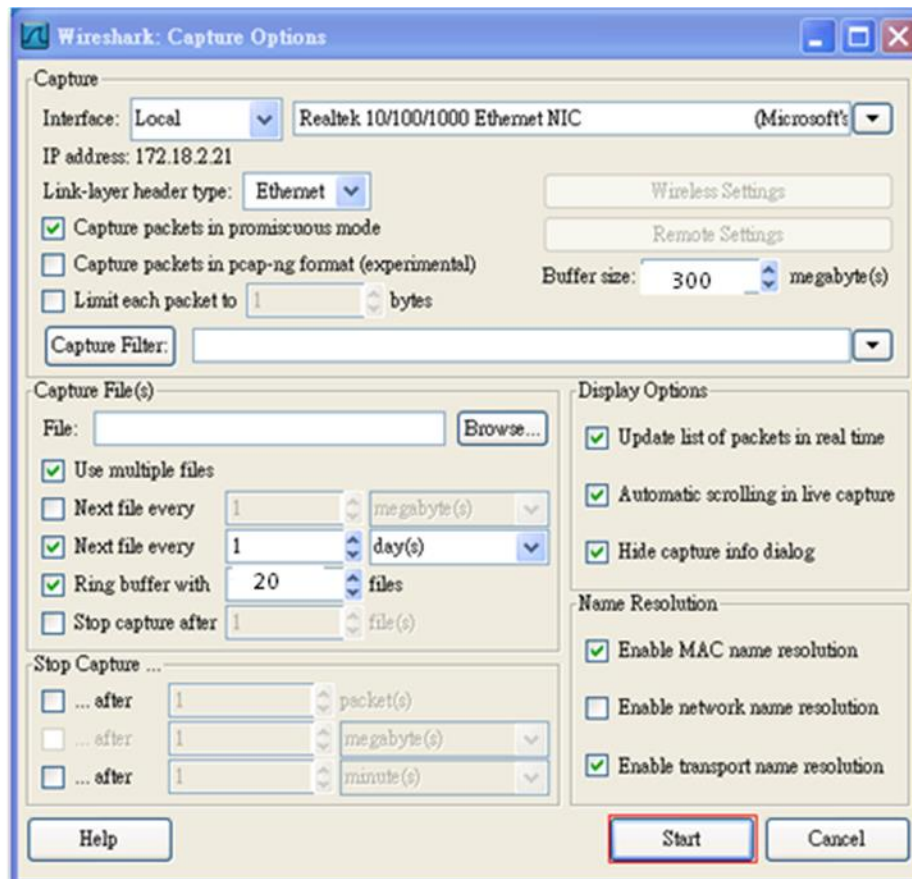
Next file every 1 day is to save Ethereal file after one day of capturing.

Ring buffer with 20 files means Wireshark will only hold last 20 files at a time.

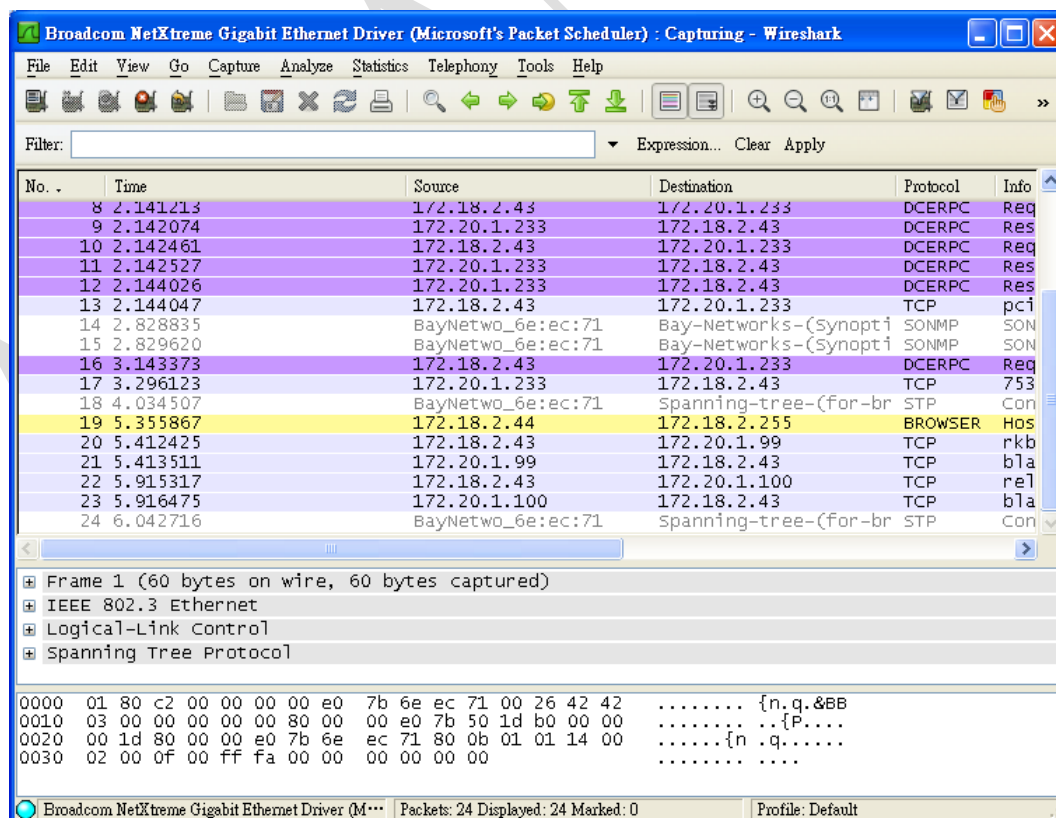
**Step5:** Select “Date and Time of Day” as the data format.



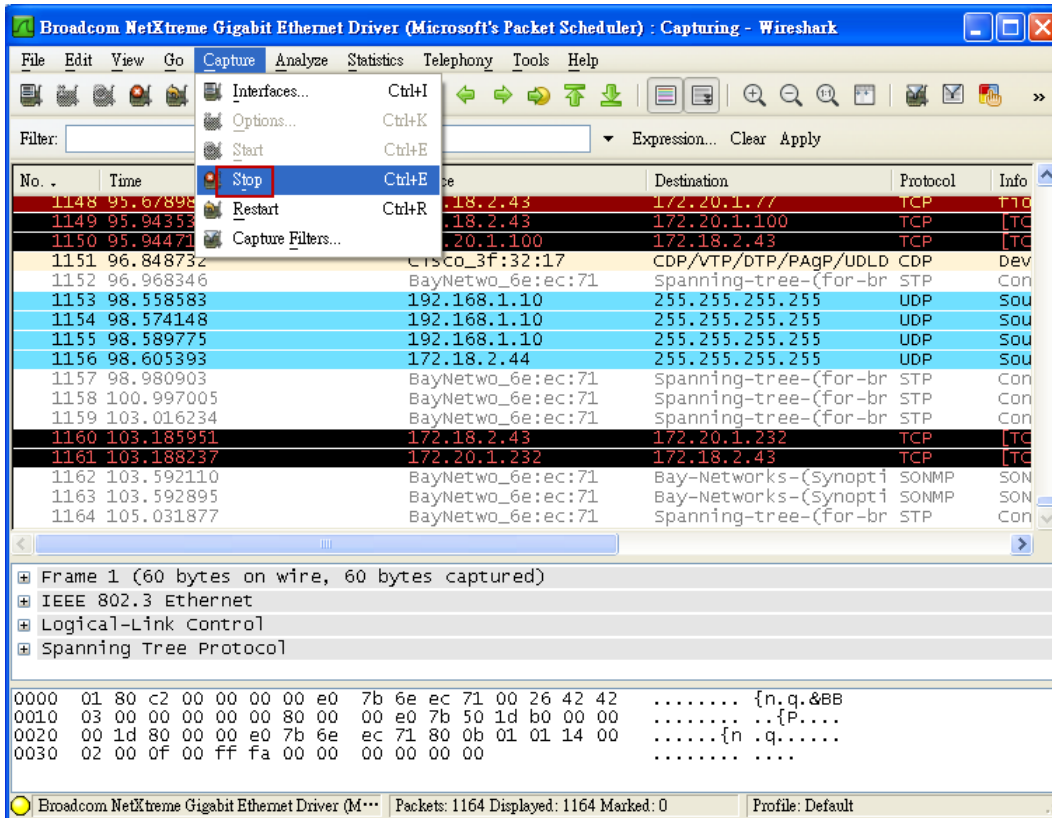
**Step6:** Click “Start” to begin capturing packet



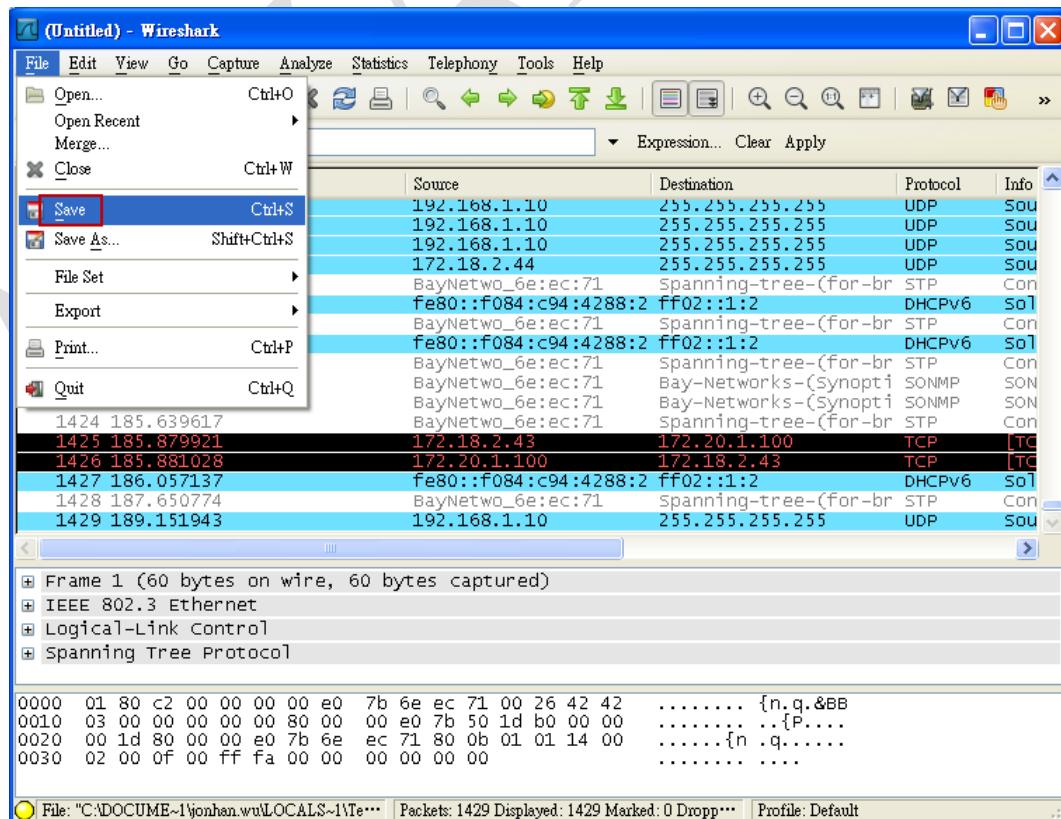
**Step7:** Communication packets are captured and shown on the screen



**Step8:** Move to “Capture” and choose “Stop” to terminate the monitoring

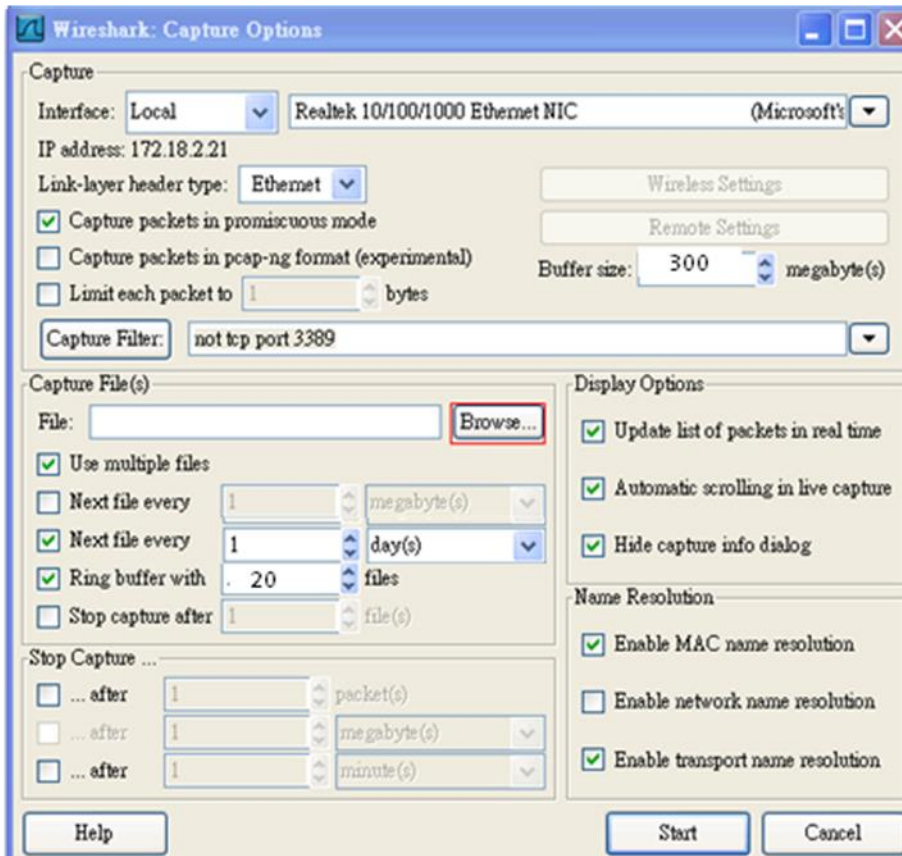


**Step9:** Go to “File” and select “Save” to save data into a file. After that, please send the file to us for further analysis.

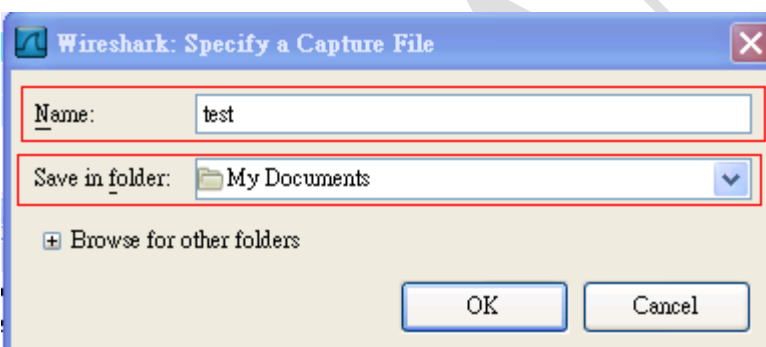




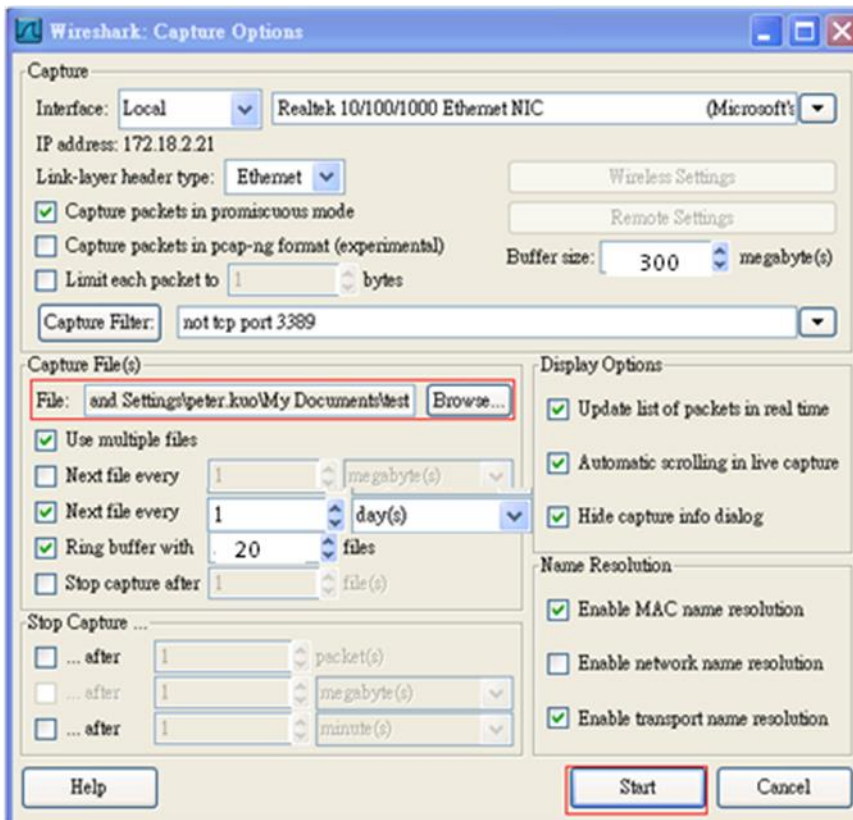
**Step 10:** To save files with corresponding date and time by selecting “Browse”



**Step 11:** Assign a file name and directory to save the files



**Step 12:** Click “Start” to start capturing packets





**Step 13:** Files will be saved with data and time on the filename

Year 2011 Month 11 Date 25 Time 17:34:01

 1322_D1.83_BFC0C9C9	7,668 KB
 1322_D1.83_BFD6F8AF	7,668 KB
 ACP Exam - 20110919-1	1,810 KB
 CSRC架構圖	47 KB
 Doc1 Comm - ICOM Card vs Serial Device ...	396 KB
 EKI-1222-assy-wall-mount_10252011 M	67 KB
 EKI-1351_1352_Manual_Ed2	4,120 KB
 EKI-6311G_Manual_v1.0_090105	1,944 KB
 EKI-6311GN901T_String_Table_20110831	195 KB
 EKI-6311GN901T_String_Table_20111011	194 KB
 eLearning - Giving Scores	937 KB
 important question (6)	1,337 KB
 SYS.CONFIG	81 KB
 test_00010_20111125173431	3 KB
 test_00011_20111125173441	2 KB
 test_00012_20111125173451	3 KB
 test_00013_20111125173501	3 KB
 test_00014_20111125173511	1 KB