

Products:

ADAM-6060W, ADAM-6050W, ADAM-6051W

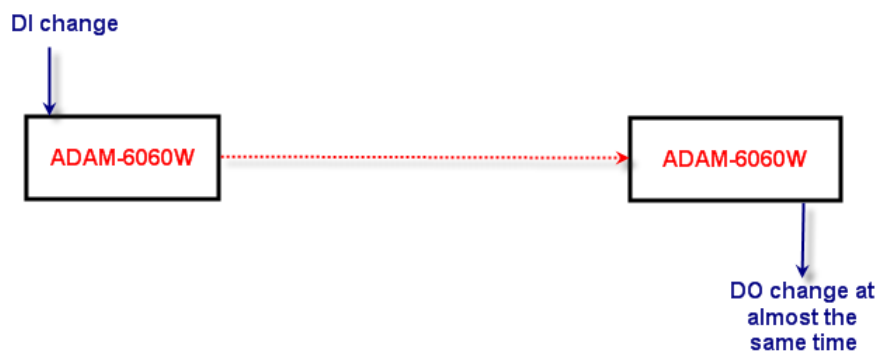
Topic:

Setting the ADAM-6060W to Peer-to-Peer Mode

Description:

Advantech's wireless remote I/O module provides the ability to control the device from distance up to 100m with no PC and wire between the peer-to-peer modules. If the digital input is changed at one place, it will send the message to the other module and change the digital output at the same time.

Please refer to the structure below.

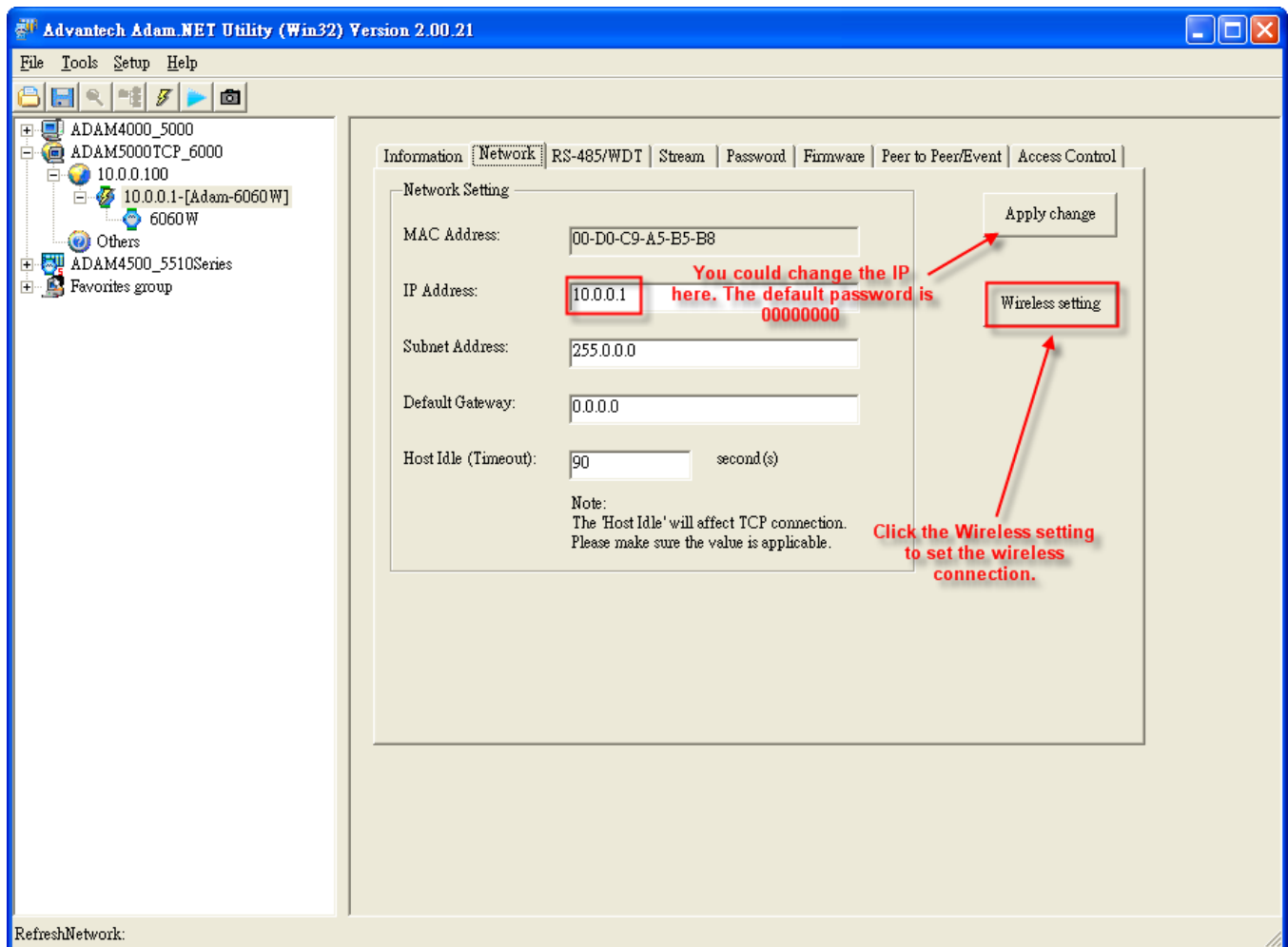
**Solution:**

1. Set the DIP switch to Diag and power on the module.
2. Connect the **WLAN** in the Wireless Network Connection in windows and set your

wireless LAN's IP as 10.0.0.X.



The IP should be in the same domain as the wireless module. (10.0.0.1 is the default.)



3. Open ADAM .NET utility to search the wireless module. You will find the module's IP is 10.0.0.1.
4. Set the Mode as Ad hoc (point to point wireless connection) and SSID as **WLAN** (default SSID of ADAM-6060W)

FormAdamWireless

ADAM-6060W wireless setting

Basic setting | WEP | Site survey

Mode: Diagnostic Adhoc

SSID:

Region:

Channel:

Basic rate:

Choose the Mode as Ad hoc
and type the SSID as "WLAN"

5. In the Peer to Peer setting page, please refer to below setting.


Information | Network | RS-485/WDT | Stream | Password | Firmware | **Peer to Peer/Event** | Access Control


Mode
☒ Basic ☐ Advanced ☐ Disable

Basic (One to One)

Period time: second(s)

Enable Change of State ☒ (C.O.S.) It should be checked.

Source  IP: ➔

Destination  IP:

The IP address is the
other module we want to
control.

Modify channel enable ☐

Channel	Enable
<input checked="" type="checkbox"/> 0	Yes
<input checked="" type="checkbox"/> 1	Yes
<input checked="" type="checkbox"/> 2	Yes
<input checked="" type="checkbox"/> 3	Yes
<input type="checkbox"/> 4	No
<input type="checkbox"/> 5	No

6. You could set the other module in the same way. If you don't want the opposite module to control the near module, just don't change the setting in the Peer to Peer/Event tab.

7. Remember to switch it back to Normal mode when applying to the peer-to-peer structure.