

## **PenMount Windows Embedded Compact 7 Driver V4.X README (PenMount WinCE7.0 x86 and ARM7 stylus Driver V4.X)**

### **1. PenMount Controller Support**

PenMount 9000 series ( Serial interface, 19200 / 9600 bps )

PenMount 6000 series ( USB interface, Serial interface, 19200 / 9600 bps )

PenMount P2 series ( USB interface, Serial interface, 38400 bps )

### **2. Driver Setup**

The contents of this package is the PenMount device driver component for Windows Embedded Compact 7 Platform Builder, which is used to build PenMount touch screen support to a Windows Embedded Compact 7 system image. Please follow the procedures described in this section to setup the device driver component.

- A. Please decompress the “PenMount WinCE7.0 x86 and ARM7 stylus Driver V4.X.zip” file. A “PenMount” directory will appear, please copy the whole directory into the Windows Embedded Compact 7 public directory. For example, if the Windows Embedded Compact 7 root is C:\WINCE700, please put the PenMount directory in C:\WINCE700\public.



- B. Open your OSDesign project in Microsoft Visual Studio 2008. The PenMount device drivers can be found in [Third Party] > [Device Drivers] > [Touch] in Catalog Items View. There are two components that PenMount supports :

#### **“PenMount Serial TouchScreen”**

This component is for PenMount serial interface,. Please follow the instructions in section 3 and change the values in \$(\_WINCEROOT)\PUBLIC\PenMount\FILES\PenMount.reg.

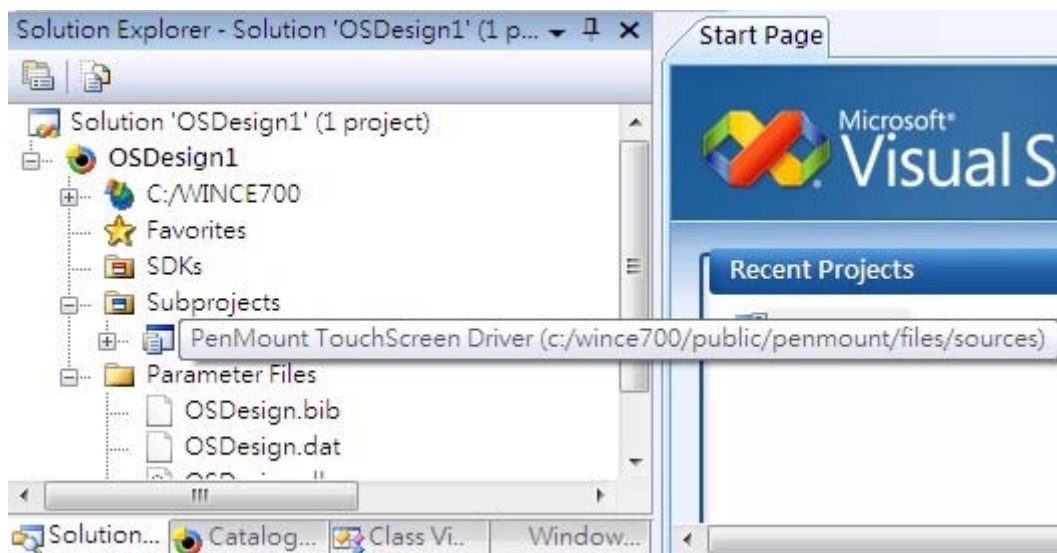
#### **“PenMount USB TouchScreen”**

This component is for USB interface. The PenMount USB device driver can automatically determine the controller type, so there is no need to change any settings in PenMount.reg.

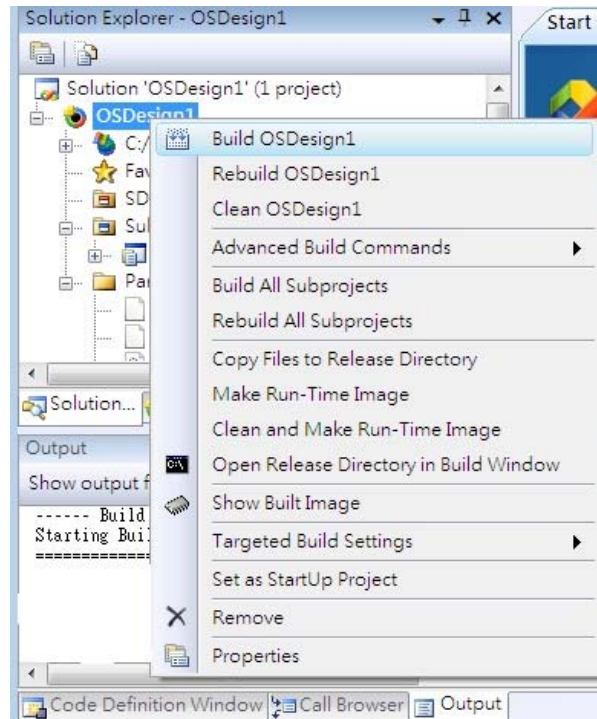
Please check the device driver component depending on which PenMount controller interface is used.



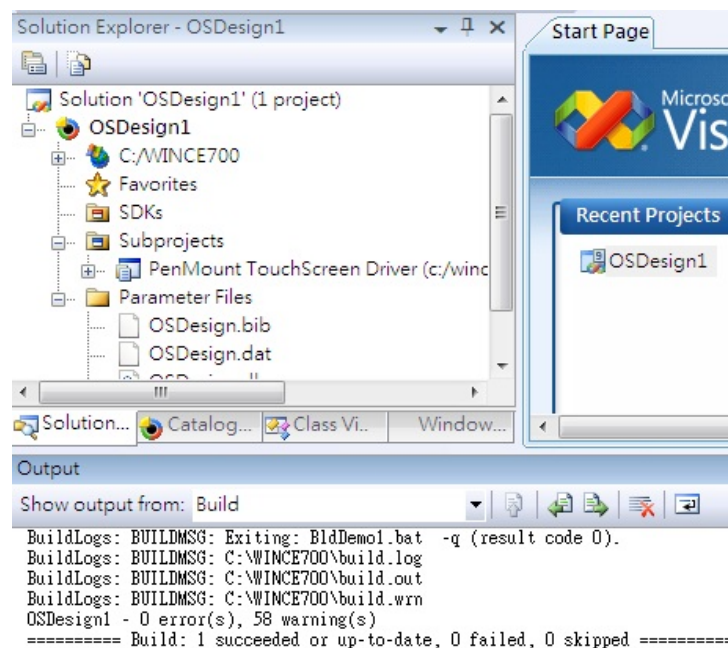
- C. After adding PenMount device driver components, a “PenMount TouchScreen Driver” subproject will appear in your OSDesign project.



- D. Right click on the OSDesign project the start building.



E. The build process will finish without error.



### 3. RS-232 interface configurations

Please setup the registry settings in PenMount.reg correctly according to the PenMount serial hardware settings in your system. The following is the default settings in PenMount.reg file.

[HKEY\_LOCAL\_MACHINE\Drivers\BuiltIn\Touch\COM2]

"**Model**" = dword:3500 ; PenMount P2  
; "Model" = dword:6000 ; PenMount 6000  
; "Model" = dword:9000 ; PenMount 9000  
  
"BaudRate" = dword:9600 ; Decimal 38400 bps  
; "BaudRate" = dword:4B00 ; Decimal 19200 bps  
; "BaudRate" = dword:2580 ; Decimal 9600 bps

#### 3-1. COM Port

Please change the registry key [HKEY\_LOCAL\_MACHINE\Drivers\BuiltIn\Touch\COM2] to the COM port that PenMount is attached to. For example, if PenMount is attached to COM3, please change the registry to : [HKEY\_LOCAL\_MACHINE\Drivers\BuiltIn\Touch\COM3].

#### 3-2. PenMount Controller Model

Please setup the Model registry value to 9000, 6000 or 3500 depending on which PenMount controller used. The default value is 3500, which is for PenMount P2 controller.

#### 3-3. Serial Baudrate

Please setup the BaudRate registry value to 2580, 4B00 or 9600, depending on the baudrate used by PenMount controller. Please notice that these values are hexadecimal based, which are 9600, 19200 and 38400 in decimal format. The default value is 9600, which is 38400 bps for PenMount P2 controller.