

Advantech AE Technical Share Document

Date	2016 / 01 / 04	SR#	
Category	■ FAQ □ SOP	Related OS	Debian 7
Abstract	How to Setup two FPM-3191G ELO touch screen + UNO-2184G(Debian 7) with USB touch cable		
Keyword	ELO, FPM-3191, FPM-3171, Debian 7, UNO-2184G		
Related Product	FPM-3191, FPM-3171		

■ Problem Description:



How to Setup two FPM-3191G ELO touch screen + UNO-2184G(Debian 7) with USB touch cable

■ Brief Solution - Step by Step:

Download Driver:

http://www.elotouch.com/files/drivers/SW602325_Elo_Linux_ST_USB_Driver_v4.0.1_i686.tgz

Download and install Debian 7 image.

<http://cdimage.debian.org/cdimage/archive/7.0.0-live/i386/iso-hybrid/debian-live-7.0.0-i386-gnome-desktop.iso>

Important:

Before you try to install driver under Debian 7, you must use one platform with Windows XP, and use

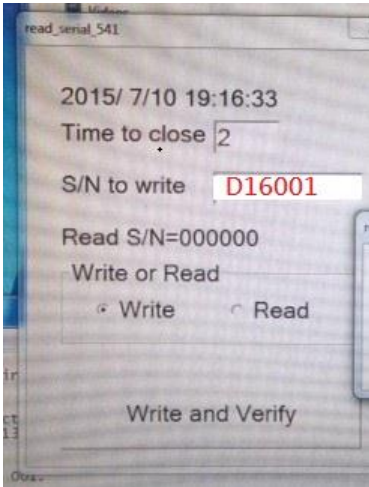
readwrite_serial_no.exe as attachment to overwrite S/N number of EEPROM. **Each of touch screens must have unique S/N.**

STEP1 – update S/N of ELO

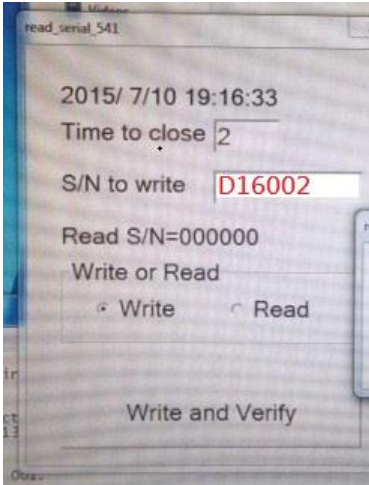
Under Windows XP, please install following ELO driver version and make sure USB cable is connected.

Elo Touch Solutions Single-Touch Driver	5.5.3	Optional driver for All Elo touch technologies. IntelliTouch Plus is supported for devices using the 2520/2521 touch controllers only.	Multiple monitor support. Release date: 03-Feb-2014
---	-------	--	---

For touch screen 1, please use **readwrite_serial_no.exe** to overwrite S/N as **D16001**



For touch screen 2, please use **readwrite_serial_no.exe** to overwrite S/N as **D16002**



You can read S/N back to verify if you have written S/N correctly.

STEP2 – Install Driver under Debian 7 and Calibrate Touch

Installed driver with readme.txt simply.

You could also refer to our command history as follow:

```
21  mkdir /tmp/USB
    //please find correct device path of your USB device, we use sdb1 as example here.
22  mount /dev/sdb1 /tmp/USB
25  cp -r /tmp/USB/bin-usb /home/
26  cd /home/
27  ls
28  cd bin-usb/
29  ls
31  cp -r /home/bin-usb/ /etc/opt/elo-usb
32  cd /etc/opt/elo-usb/
33  ls
34  chmod 777 *
35  chmod 444 *.txt
36  cp /etc/opt/elo-usb/99-elotouch.rules /etc/udev/rules.d
37  cp /etc/opt/elo-usb/elorc /etc/init.d
43  cd /etc/rc2.d
44  update-rc.d elorc start 11 2
45  vi /etc/inittab
46  /etc/opt/elo-usb/loadEloTouchUSB.sh
47  shutdown -r now
```

Now the touch function should be work. But the touch of both panel might not accurate. Please calibrate touch by following steps:

```
98  cd /etc/opt/elo-usb/
    //please calibrate first touch panel by parameter --videoscreen=0
101 ./elova --videoscreen=0
    //please calibrate second touch panel by parameter --videoscreen=1
102 ./elova --videoscreen=1
```

Now you should be able to touch both Panel accurately with extend desktop mode.

■ **Reference:**

N/A