

# Advantech AE Technical Share Document

Date	2016 / 5 / 30	SR#	1-2468758953
Category	<input type="checkbox"/> FAQ <input checked="" type="checkbox"/> SOP	Related OS	Microsoft Windows7
Abstract	Popup and close a new display window by using WebAccess Display (DSP) functions		
Keyword	WebAccess, popup, DSP, <DSPPOPUPDEP>, <CLOSEDSP> , <ALT_F4>		
Related Product	N/A		

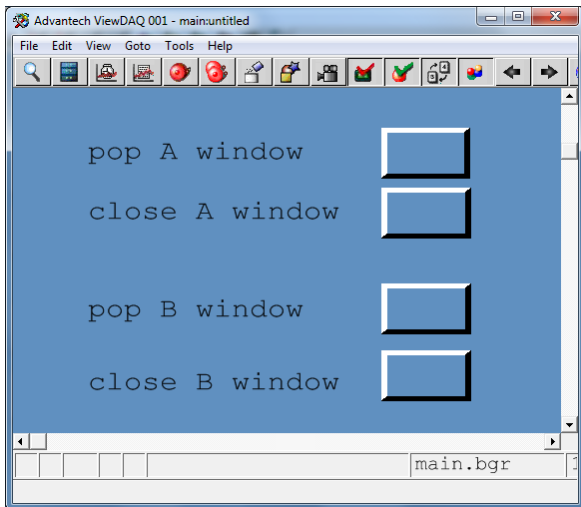
## ■ **Problem Description:**

The purpose of having Display(DSP) function is allowed user to create a popup display window. Display function also allows multiple display windows to be opened with a single mouse click. User can save multiple windows, size, position and default display as a display group, and then re-open this group from a menu list or pushbutton. Other features of display groups include hide menu bar, no resize and exit password level to close Advantech WebAccess. Display Groups are a Windows management tool.

## ■ **Scenario:**

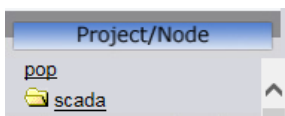
When user clicks “pop A window”, an “A window” popups up; when user clicks “pop B window”, a “B window” popups up. User can also click “close window” to close A window or B window.

Macro to be used: <DSPPOPUPDEP>, <CLOSEDSP> and <ALT\_F4>



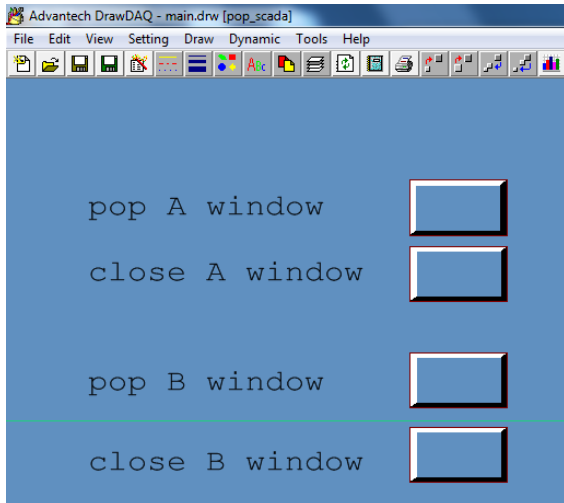
## ■ **Brief Solution:**

1. Create a WebAccess project. Only need Project Node and SCADA Node names.



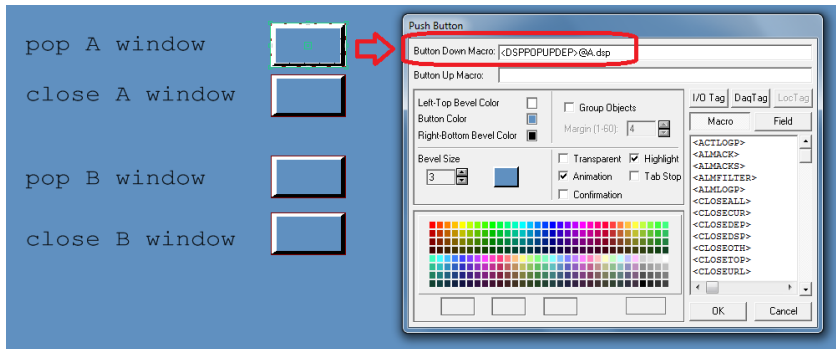
2. Create three bgr pages
  - a. one for popup and close window
  - b. one for A window
  - c. one for B window

### 3. Popup and close window (save as main.bgr and main.drw)



#### a. Macro for “pop A window”

Button Down Macro: <DSPPOPUPDEP>@A.dsp



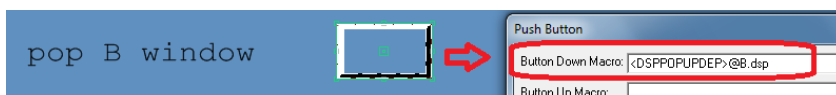
#### b. Macro for “close A window” – close all DSP windows that name is “a” in ViewDAQ name

Button Down Macro: <CLOSEDSP>:a



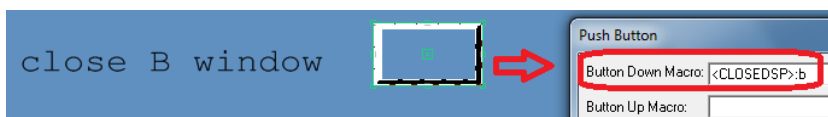
#### c. Macro for “pop B window”

Button Down Macro: <DSPPOPUPDEP>@B.dsp



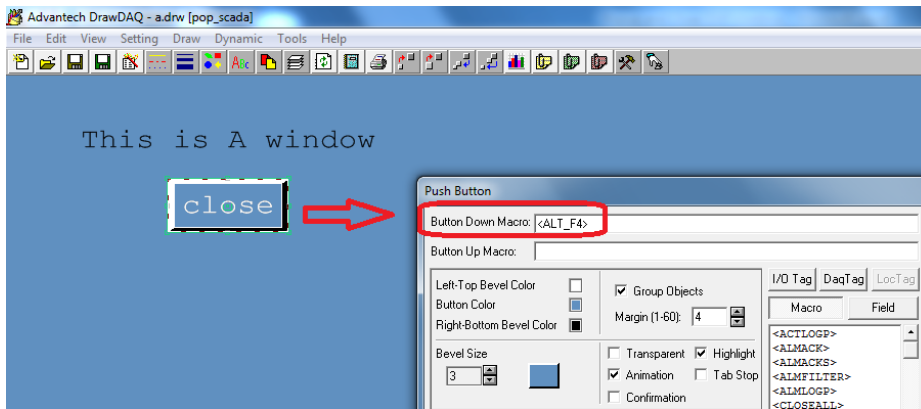
#### d. Macro for “close B window” – close all DSP windows that name is “b” in ViewDAQ name

Button Down Macro: <CLOSEDSP>:b



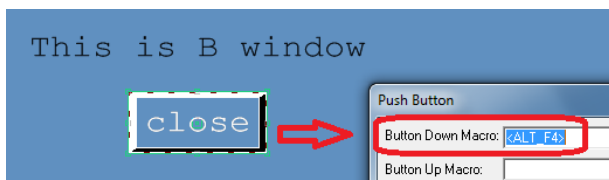
### 4. A window (save as A.bgr and A.drw)

Button Down Macro: <ALT\_F4>



## 5. B window (save as B.bgr and B.drw)

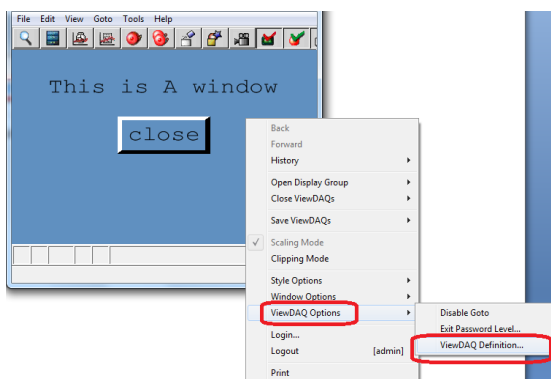
Button Down Macro: <ALT\_F4>



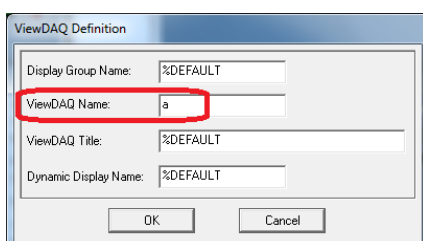
## 6. Save and download project (no tag is required in this project)

## 7. Start kernel -> ViewDAQ -> open A.bgr

Click right button to login, then click right button again -> ViewDAQ Options -> ViewDAQ Definition

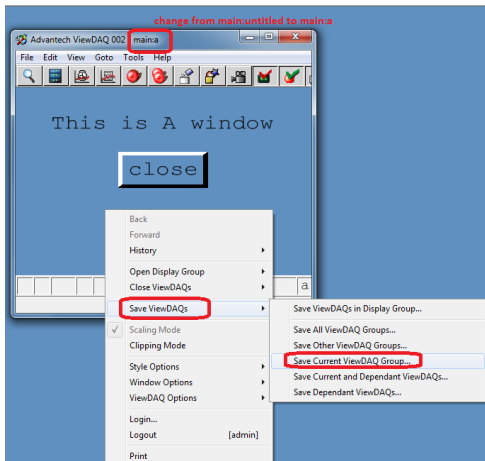


Change "ViewDAQ Name" to "a", click "OK" button

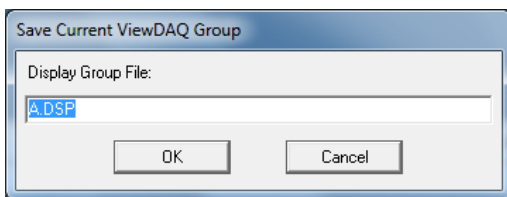


Save A.bgr to A.dsp

Click right button of mouse -> Save ViewDAQs -> Save Current ViewDAQ Group...



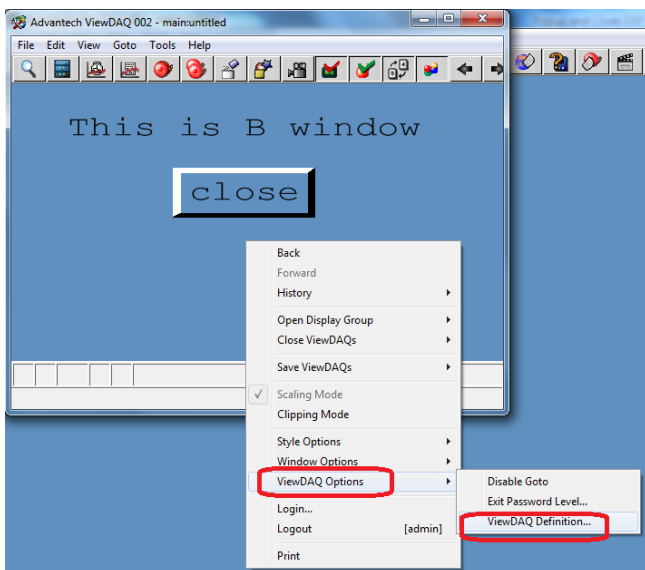
Save Display Group File named to "A.dsp"



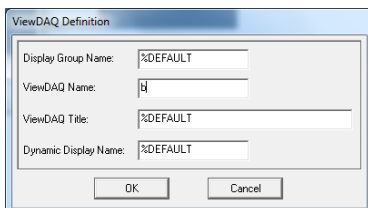
## 8. Repeat Step 7 for B.bgr and B.dsp

Close A.bgr page, then ViewDAQ -> open B.bgr

Click right button to login, then click right button again -> ViewDAQ Options -> ViewDAQ Definition

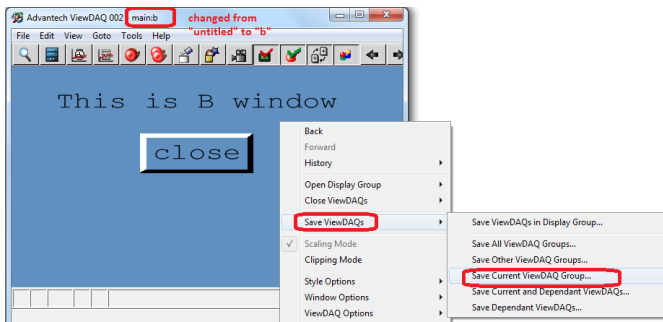


Change "ViewDAQ Name" to "b", click "OK" button

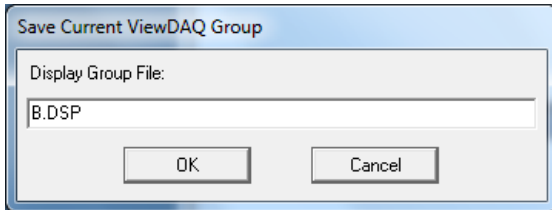


Save b.bgr to B.dsp

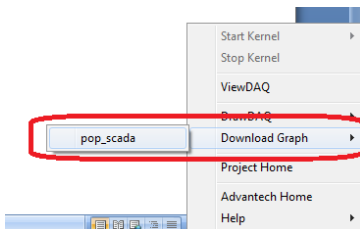
Click right button of mouse -> Save ViewDAQs -> Save Current ViewDAQ Group...



Save Display Group File named to "B.dsp"



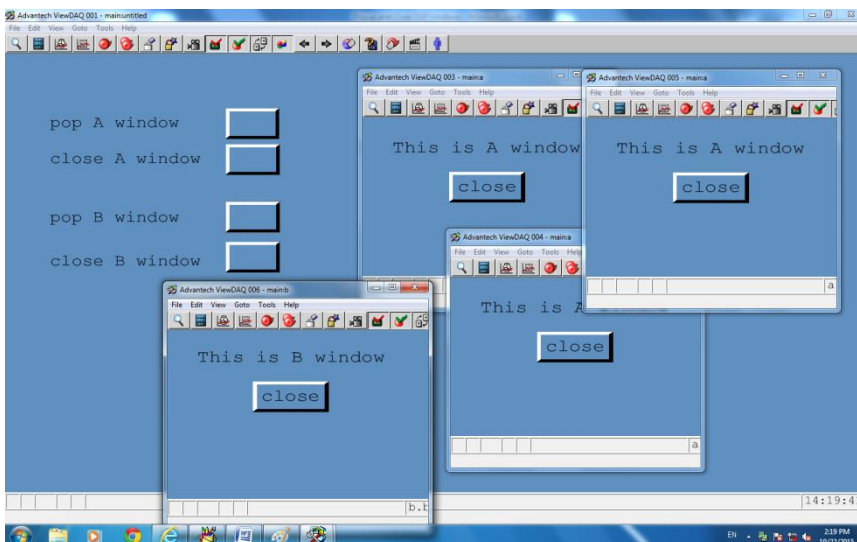
9. Download WebAccess project Graph again.



10. Result:

Click "pop A window" can open many A windows

Click "pop B window" can open many B windows



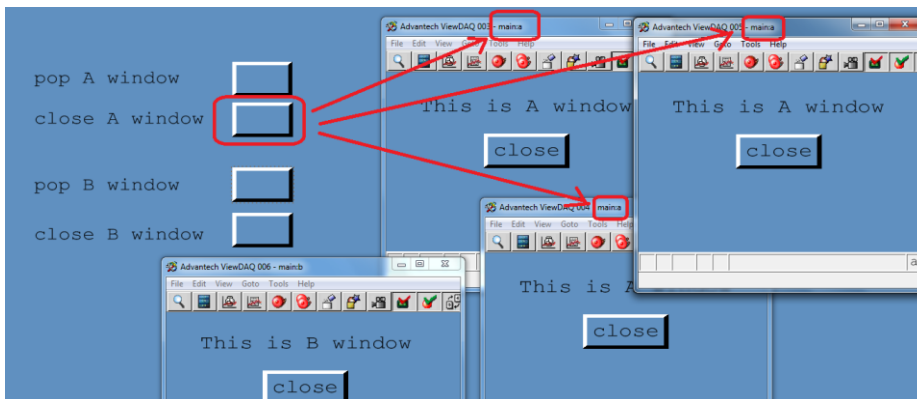
11. Click "close" window in DSP window can close itself.

Note: Macro down command is <ALT\_F4 >



12. Click "close A window" button will close all windows that named is ":a"

Note: Button Down Macro command is <CLOSEDSP>:a



13. Extra Notes:

- "<CLOSEDEP>" will close Dependent ViewDAQ
- "<CLOSEDSP>dspname" will close Display Group Name that dspname is ViewDAQ
- "<CLOSEDSP>dspname:daqname" will close Display Group Name that dspname/ViewDAQ Name is daqname in ViewDAQ

