

Advantech AE Technical Sharing Documentation

Date	2017 / 01 / 03	SR#	1-2759346373
Category	<input type="checkbox"/> FAQ <input checked="" type="checkbox"/> SOP	Related OS	WINCE6 / WIN7
Abstract	How to use your PC to synchronize with your WCE6 devices		
Keyword	WINCE6 / ActiveSync / WIN7		
Related Product	UNO series supporting WCE6 image with built-in ActiveSync		

■ **Problem Description:**

Customers can synchronize WCE6 devices with their PC.

For ActiveSync details, please refer to <https://en.wikipedia.org/wiki/ActiveSync>

■ **Brief Solution - Step by Step:**

Before you begin, you need to verify both the PC and WCE6 device are using **full-pin** design RS-232 communication. Port settings on **both server and clients** need to be in consistency.

For DEMO purpose, we used PC installed with WIN7 and an UNO-2178A installed with WCE6.

Step1, 2, 5 are settings done within the PC.

Step3, 4 are for your CE device.

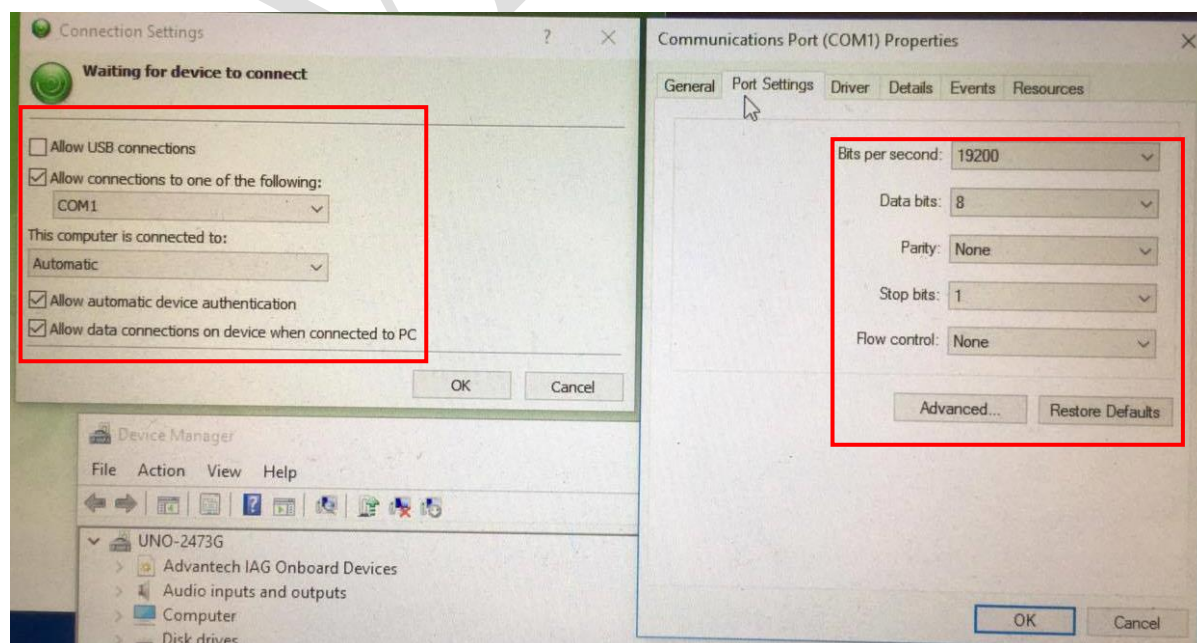
Step1

Verify your PC is installed with Windows Mobile Device Center.

<https://www.microsoft.com/en-us/download/details.aspx?id=3182>

Step2

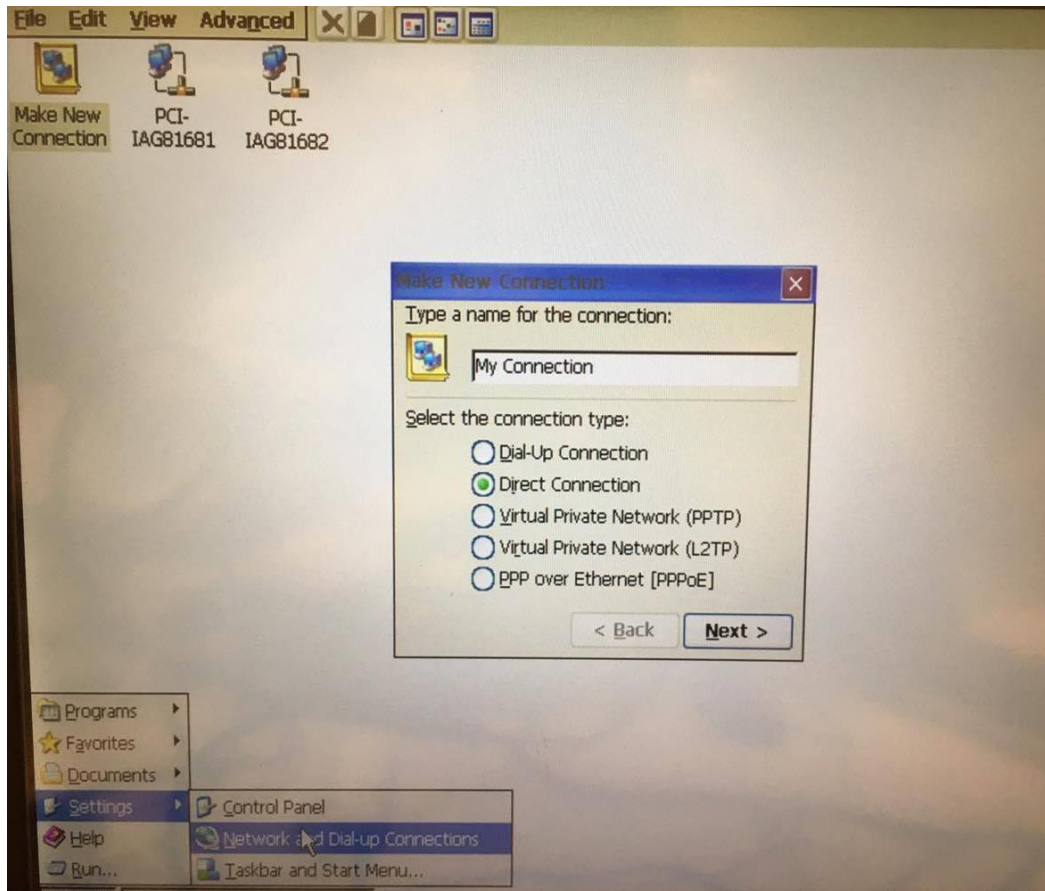
Verify the serial port you are using, and the Port Settings.



Step3

Go to **Settings – Network and Dial-up Connections.**

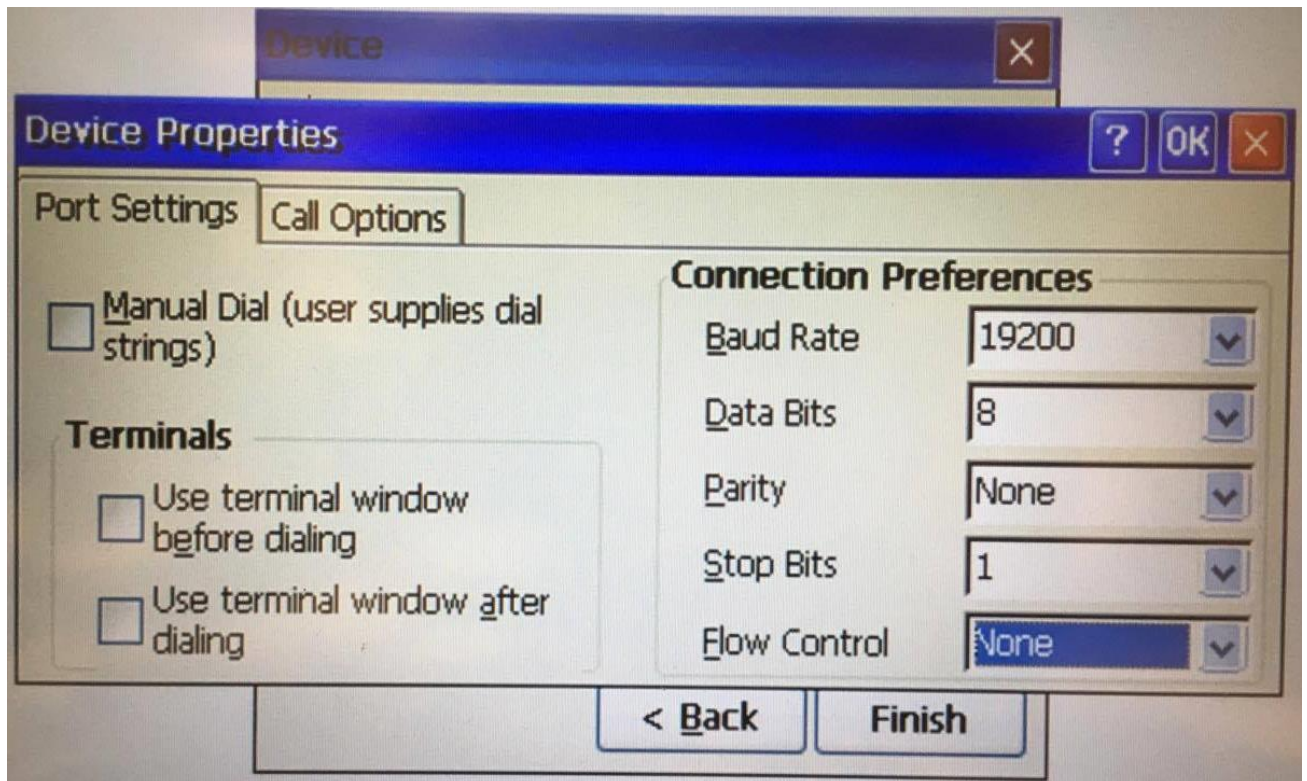
Make a **New Connection** and select **Direct Connection.**



Leave other settings as they are, and select the port you are going to use on your WCE device.

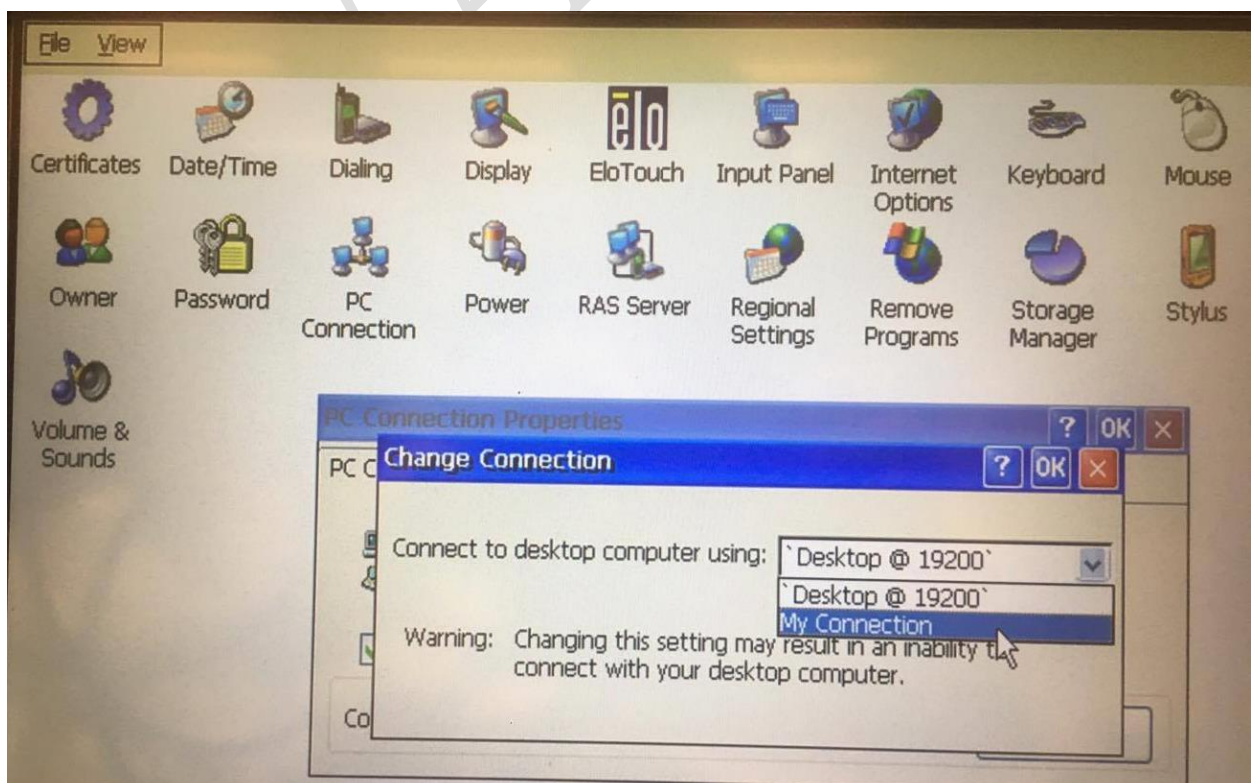


Click **Configure** and verify the **Port Settings** are in consistent with your PC, then click OK, Finish.



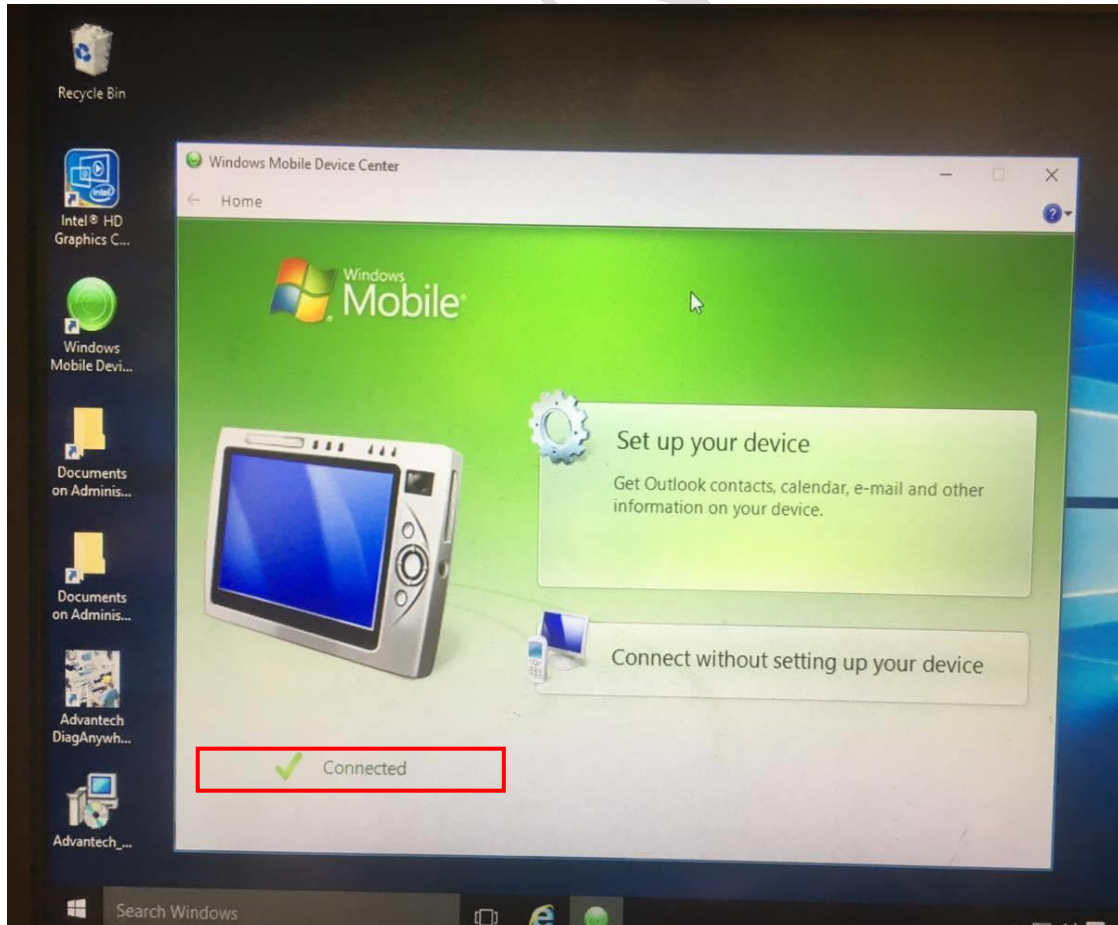
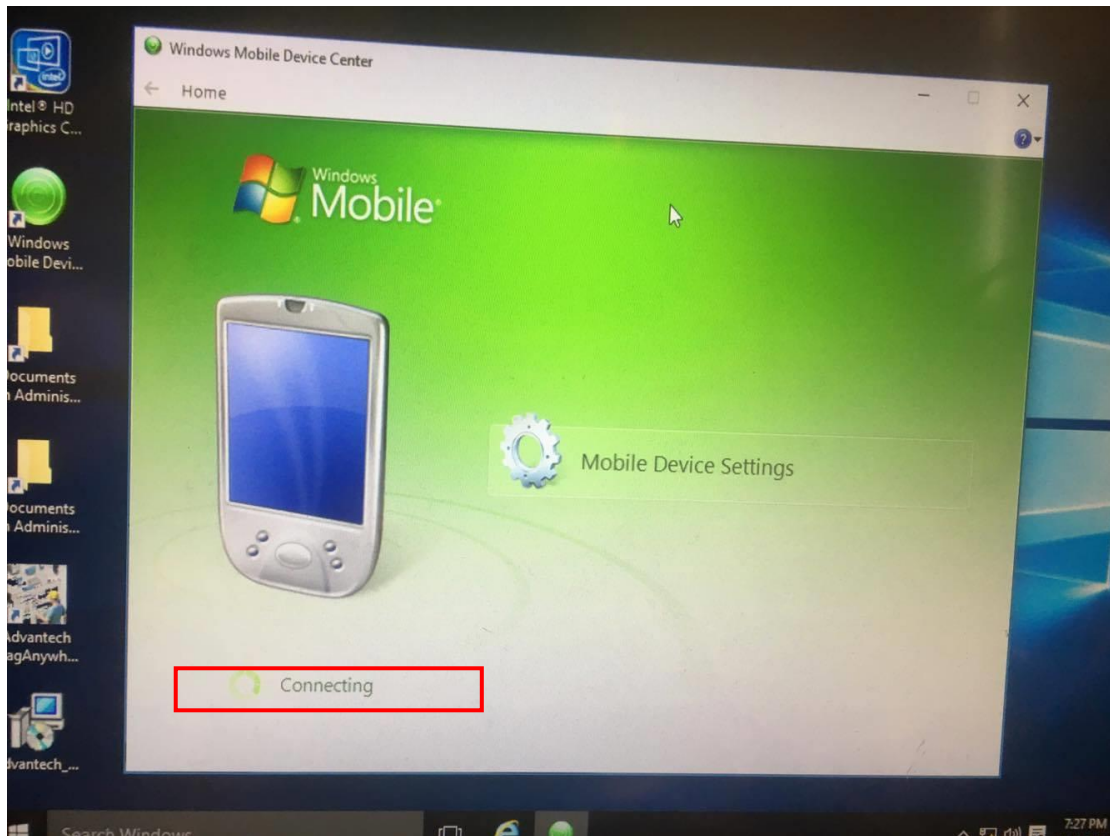
Step4

Go to **Control Panel** and click **PC Connection** to change the connection used (to the one you created in Step3).



Step5

Verify a successful connection is established.



■ **Reference:**

Advantech

http://www.advantech.tw/products/1-2mlj9a/uno-2178a/mod_5ca4ab53-87db-4ebb-8f39-bfee9b2dbe1f

ActiveSync-related

<https://www.microsoft.com/en-us/download/details.aspx?id=3182>

<http://stackoverflow.com/questions/32052429/how-to-connect-a-windows-mobile-pda-to-windows-10>

<https://en.wikipedia.org/wiki/ActiveSync>