

Advantech AE Technical Share Document

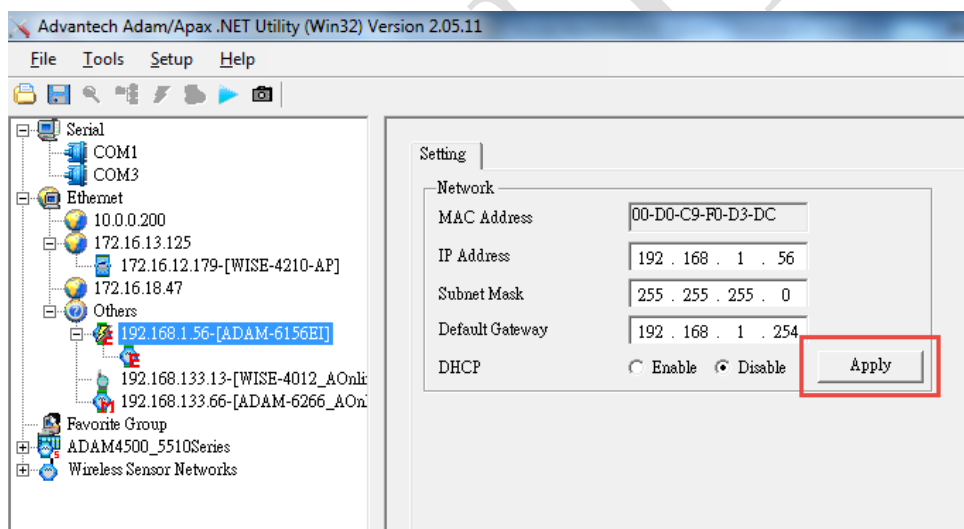
Date	2017/09/27	SR#	
Category	■FAQ □SOP	Related OS	N/A
Abstract	How to revise the network configuration for EtherNet IP module?		
Keyword	Modbus, Continuous Pulse, Absolute Pulse		
Related Product	ADAM-6100EI		

■ Problem Description:

This document shows that how to revise the network configuration for EtherNet IP module.

■ Answer:

When revising the network configuration for ADAM-6100 EtherNet IP module, the customer needs to switch the module to the initial mode and use utility to do that. However, after click the “Apply”, nothing happen. Even though I re-power the module, the IP doesn’t change.



If you encounter the above issue, **please disable other network cards except for the one which connect to ADAM-6100 EtherNet IP module.** Then try to click “Apply” again. If the following frame pop up, it means that you successfully change the network configuration.

