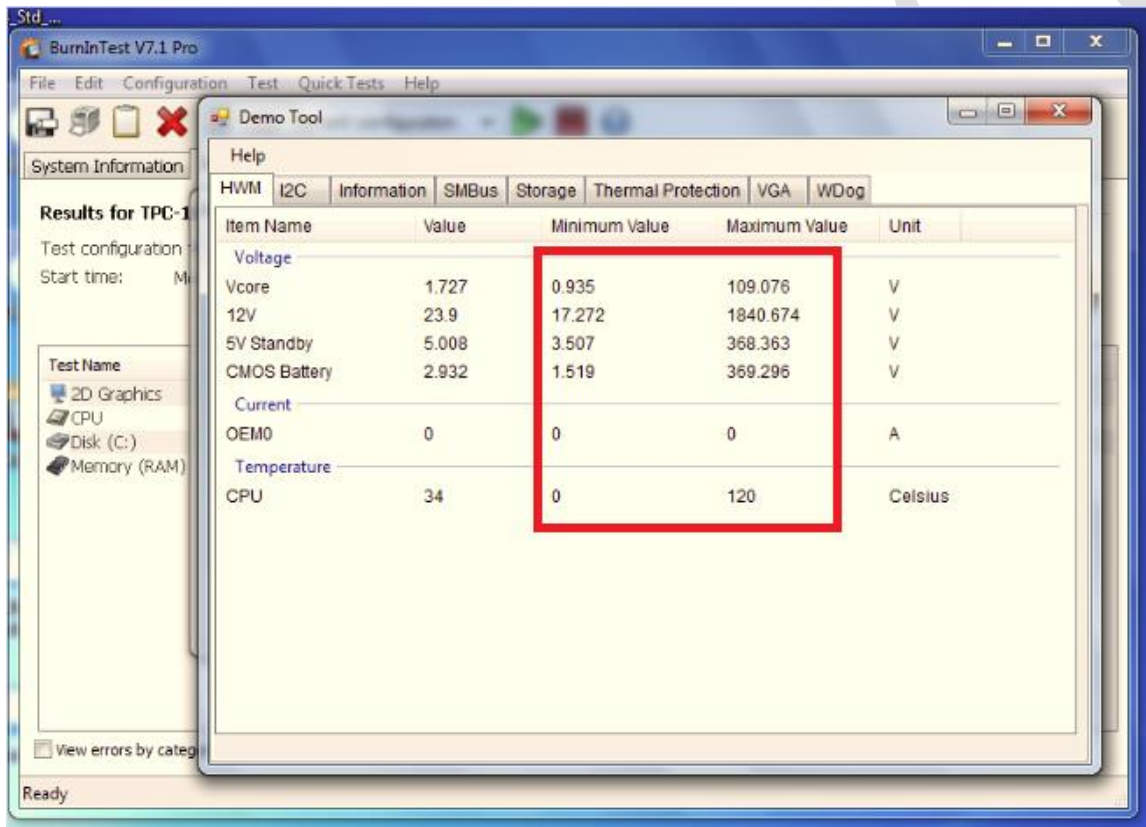


## Advantech AE Technical Sharing Documentation

<b>Date</b>	2018/03/08	<b>SR#</b>	1-3377187620
<b>Category</b>	<input checked="" type="checkbox"/> FAQ <input type="checkbox"/> SOP	<b>Related OS</b>	N/A
<b>Abstract</b>	How to solve when SUSI demo showed maximum and minimum voltage abnormally?		
<b>Keyword</b>	SUSI demo, EC driver, maximum, minimum		
<b>Related Product</b>	TPC-xx51T,TPC-xx51WP,TPC-1x81WP,TPC-1x82H		

■ **Problem Description:**

The maximum and minimum value in SUSI demo is abnormal.



■ **Problem Analysis:**

- If EC driver and SUSI4 were installed in the same device, it will cause SW conflict. Because SUSI Demo will collect the data from EC and SUSI4 has EC driver too. One system has two drivers make SUSI Demo collect the data occur error.

■ **Brief Solution - Step by Step:**

Uninstall EC driver AP **First**. (ECHW monitor、EC Brightness) and then uninstall EC driver. After that, install SUSI4 will work normally.

■ **Contact Window and File Link:**

If you have any questions, please contact [Jerry.Cheng@advantech.com.tw](mailto:Jerry.Cheng@advantech.com.tw)