

EKI-9300 Series Managed Switch Backup/Upgrade Manager SOP

- Upload FW/Configuration by TFTP
- Download FW/Configuration by TFTP

Revision Date	Revision	Description	Author
March/2018	V1.0	Initial release	ICG AE Eddie.Wei / Raimen Liu

Abstract

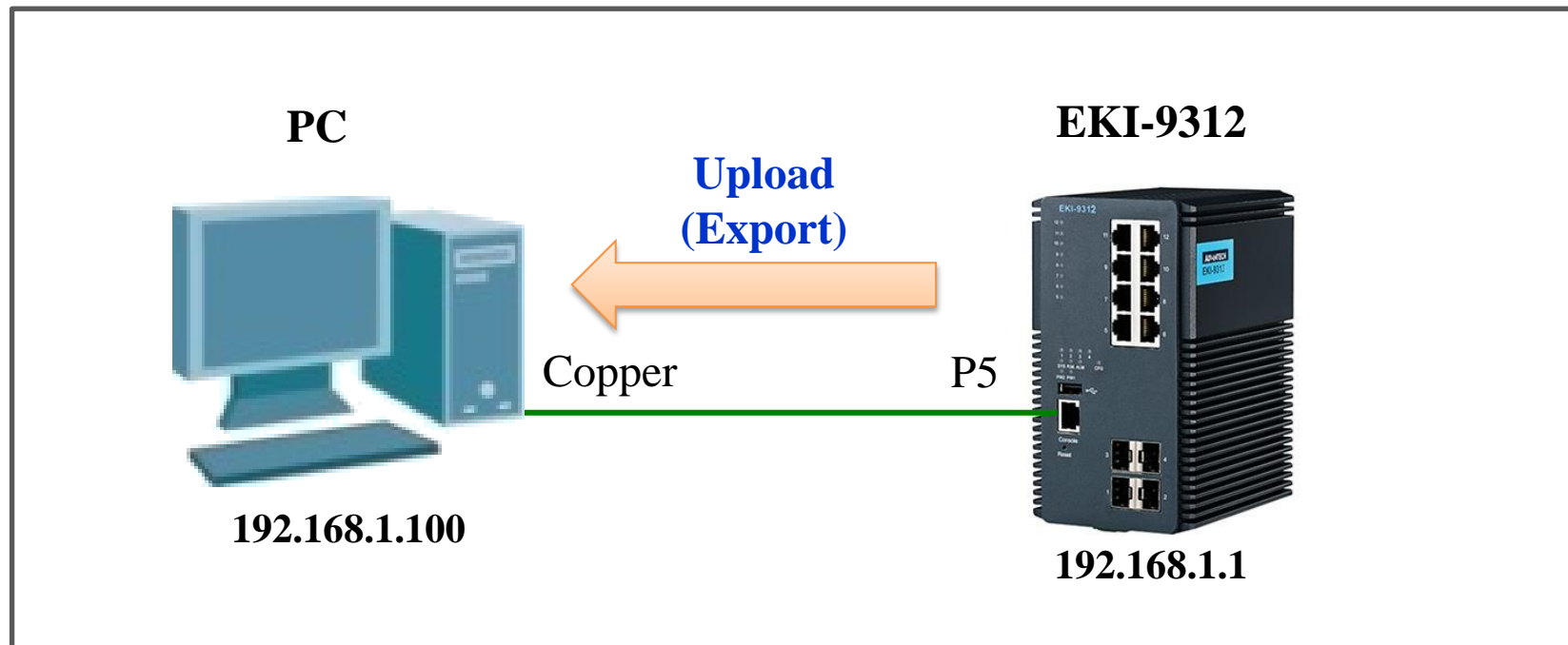
- ❖ This SOP explains how to operate *Upload/Download* firmware and configurations on Advantech EKI-9300 series industrial managed switch.
- ❖ **Related products:**
EKI-9312, EKI-9312P, EKI-9316, EKI-9316P
- ❖ **Requirement:** Advantech managed switch, RJ45 ethernet cable, PC



Upload FW/Configuration by TFTP (Export the file from switch)

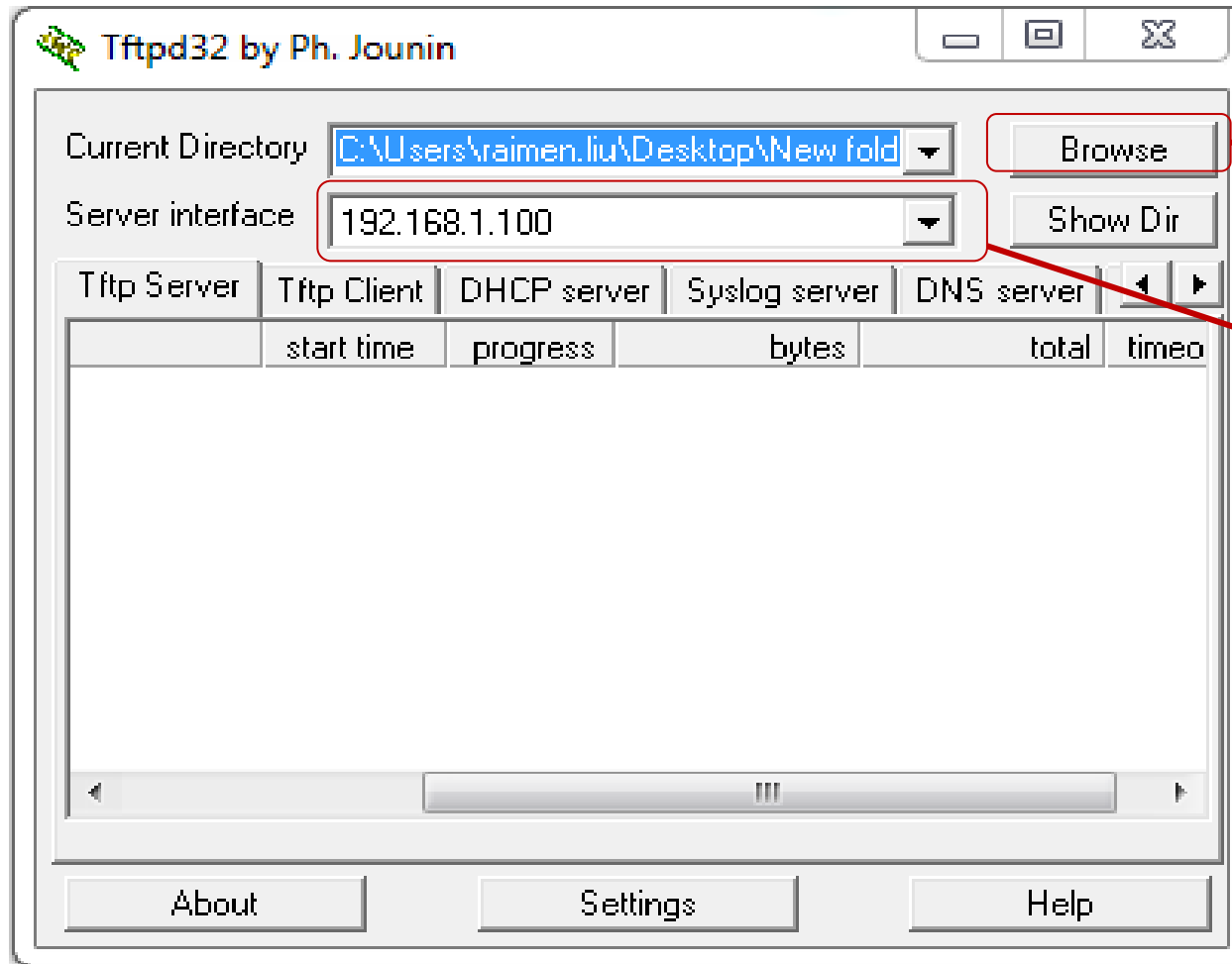
Upload FW/Configuration by TFTP

- Purpose: **Export** device configurations via TFTP
- Resource requirements: Tftpd 32
http://tftpd32.jounin.net/tftpd32_download.html
- Topology:



Upload FW/Configuration by TFTP

- Step 1: Open TFTP and set configuration



Choose destination directory to put your configuration.

TFTP server's IP

Upload FW/Configuration by TFTP

- Step2: Enter WebGUI to upload configuration form Switch

ADVANTECH Industrial Switch

Upload File From Switch

1. **Upload**

2. **File Type**: Startup Configuration *Select Configuration or FW to export*

Transfer Mode: TFTP

Server Address Type: IPv4

Server Address: 192.168.1.100 *IP address corresponds to TFTP Server*

Transfer File Name: 123.txt *Your FULL (includes extension) configuration file name*

Start File Transfer:

File Transfer Status

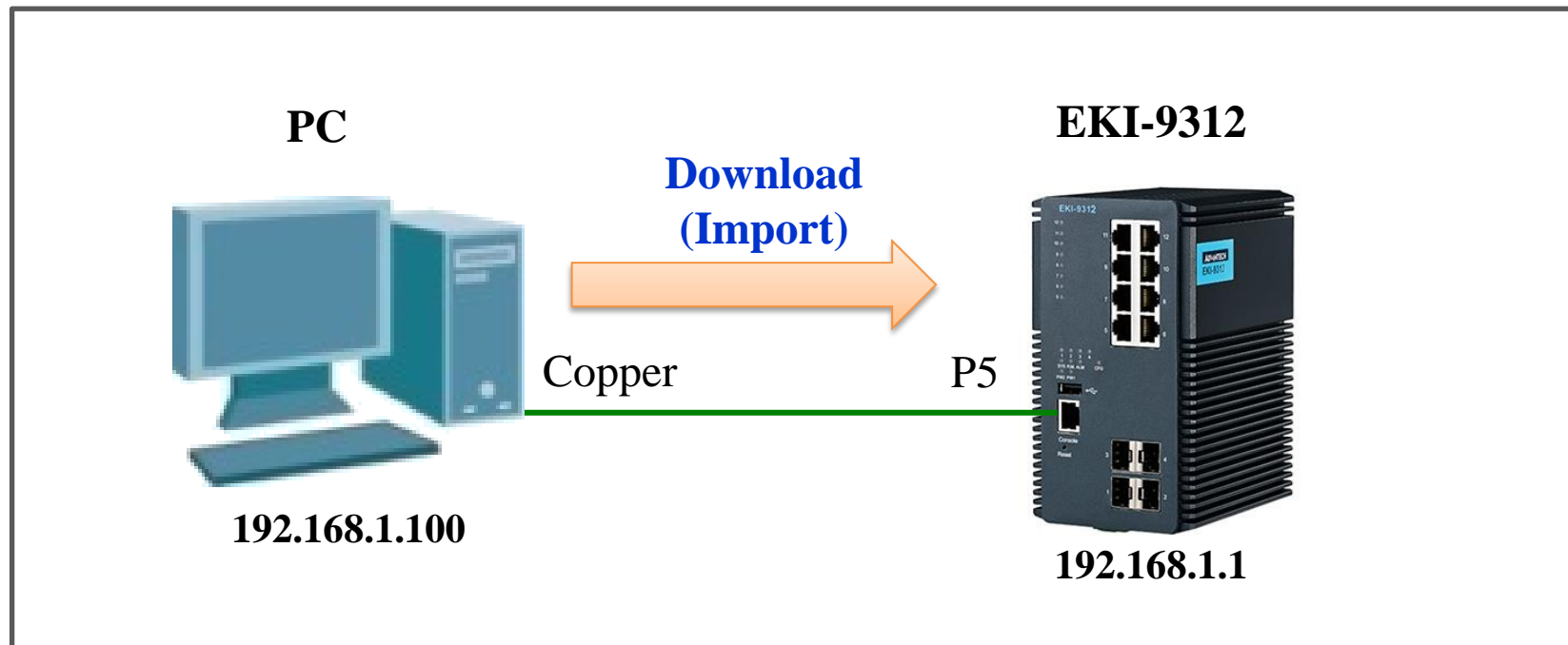
3. **Submit**

⌘ Noted that “*Transfer File Path*” blank can be **EMPTY** since TFTP configuration in the last step should’ve directed to the destination directory.

Download FW/Configuration by TFTP (**Import** the file to switch)

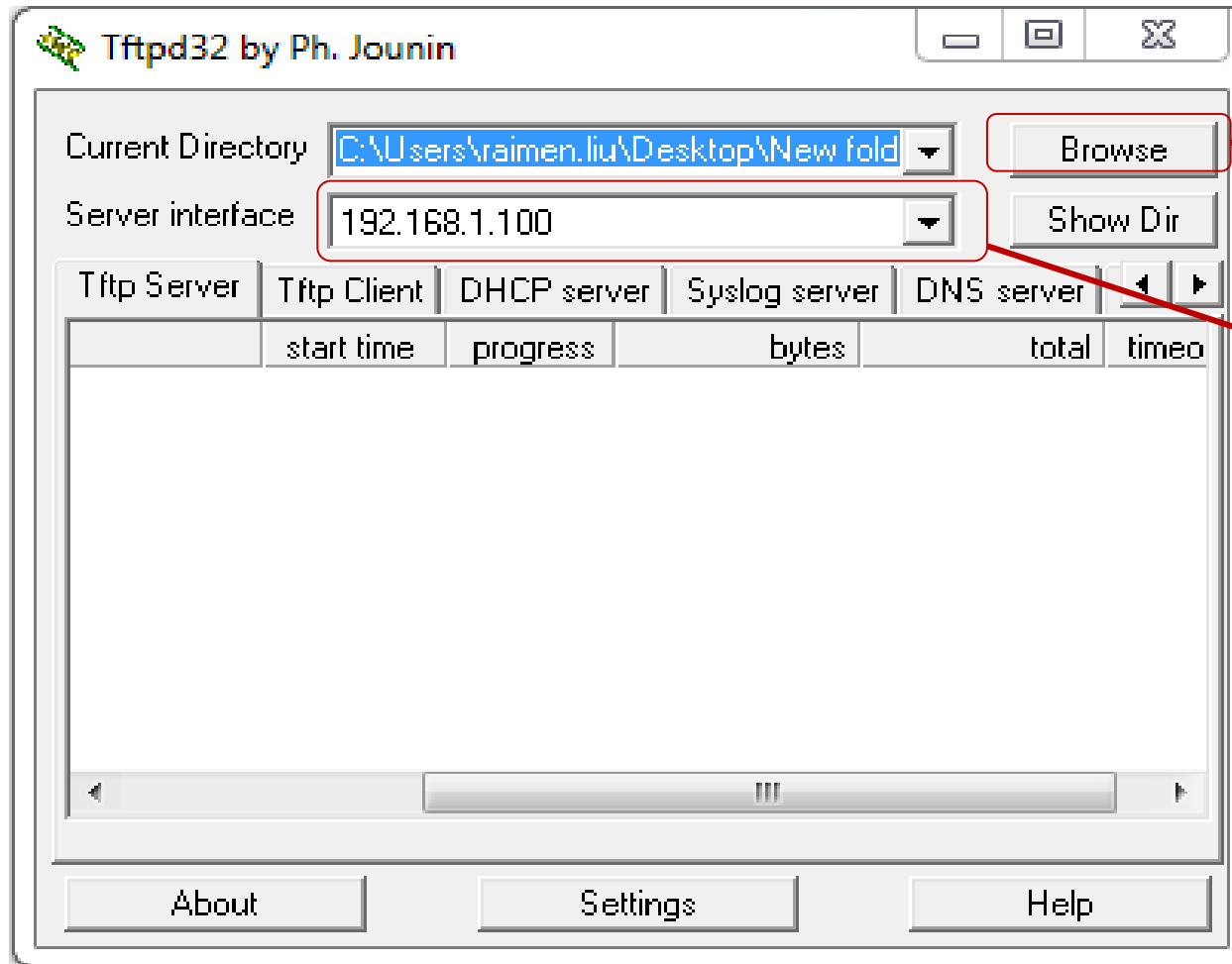
Download FW/Configuration by TFTP

- Purpose: Import device configurations via TFTP
- Resource requirements: Configuration file(or firmware file), Tftpd 32
http://tftpd32.jounin.net/tftpd32_download.html
- Topology:



Download FW/Configuration by TFTP

- Step 1: Open TFTP and set configuration



Choose source directory where you put the configuration.

TFTP server's IP

Download FW/Configuration by TFTP

- Step2: Enter WebGUI to download configuration to Switch

ADVANTECH Industrial Switch

Download File To Switch

1. **Download**

2. **File Type**: Startup Configuration (Select Configuration or FW to import)
Transfer Mode: TFTP
Server Address: 192.168.1.100 (IP address corresponds to TFTP Server)

Transfer File Name: 123.txt (Your FULL (includes extension) configuration file name)

Start File Transfer

File Transfer Status: File transfer operation completed successfully.

3. **Submit**

❖ Noted that “*Transfer File Path*” blank can be **EMPTY** since TFTP configuration in the last step should’ve directed to the source directory.



Enabling an Intelligent Planet

Enabling an Intelligent Planet

ADVANTECH