

## Advantech AE Technical Sharing Documentation

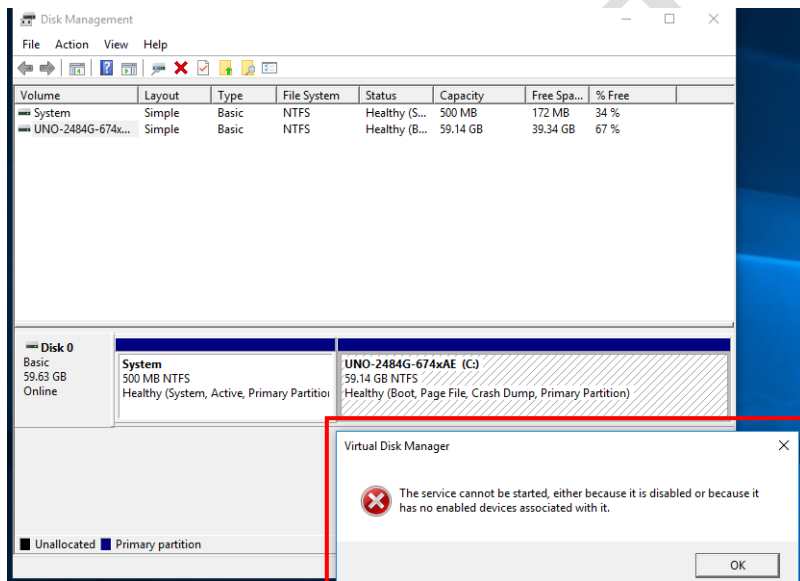
<b>Date</b>	2018 / 04 / 10	<b>SR#</b>	1-3031807152
<b>Category</b>	<input type="checkbox"/> FAQ <input checked="" type="checkbox"/> SOP	<b>Related OS</b>	WIN10 LTSP
<b>Abstract</b>	How to use diskpart to shrink volume under WIN10 LTSP for UNO series		
<b>Keyword</b>	diskpart / WIN10 LTSP / shrink volume		
<b>Related Product</b>	UNO series supporting WIN10 LTSP		

### ■ **Problem Description:**

Customers can use the **diskpart** command to manage the volume under WIN10 LTSP for UNO series.

### ■ **Brief Solution - Step by Step:**

By default, **Virtual Disk Manager** is not included in the image. When you right click the partition to shrink the volume, you will experience the error as below.



In this case, you can use the included **diskpart** function to manage the allocation.

## Step1

Open a command prompt as administrator and run the following commands in order.

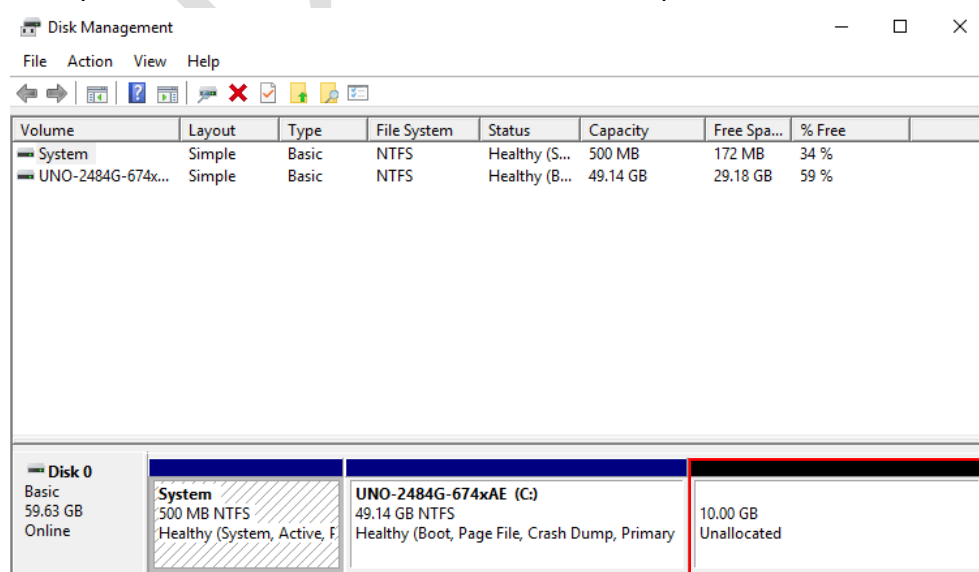
Explanations can be found in green.

```
Administrator: Command Prompt
C:\Users\Administrator>sc config defragsvc start= demand Enables you to start the defragsvc
[SC] ChangeServiceConfig SUCCESS
C:\Users\Administrator>sc start defragsvc Starts the defrag service so disk management can figure
out how to reallocate files when you shrink the volume
SERVICE_NAME: defragsvc
        TYPE               : 10  WIN32_OWN_PROCESS
        STATE                : 2   START_PENDING
                        (NOT_STOPPABLE, NOT_PAUSABLE, IGNORES_SHUTDOWN)
        WIN32_EXIT_CODE       : 0   (0x0)
        SERVICE_EXIT_CODE    : 0   (0x0)
        CHECKPOINT           : 0x0
        WAIT_HINT            : 0x7d0
        PID                 : 6140
        FLAGS                 :
C:\Users\Administrator>diskpart Allows you to use diskpart function
Microsoft DiskPart version 10.0.14393.0
Copyright (C) 1999-2013 Microsoft Corporation.
On computer: UNO-2484G-674XA
DISKPART> list volume Gets you the volume info
Volume ###  Ltr  Label        Fs      Type        Size     Status     Info
-----
Volume 0                        System      NTFS      Partition   500 MB    Healthy    System
Volume 1     C    UNO-2484G-6  NTFS      Partition   59 GB     Healthy    Boot
DISKPART> select volume 1 Selects the volume you want to shrink from
Volume 1 is the selected volume.
DISKPART> shrink desired=10240 Set the size you want to create, for ex. 10GB
DiskPart successfully shrunk the volume by: 10 GB Indicates the action is completed
DISKPART> exit
Leaving DiskPart...
C:\Users\Administrator>
```

Once seen the last command, enter exit to exit diskpart.

## Step2

Now you will be able to see a created unallocated partition.



## Step3

Now we will activate the created partition for use.

```
C:\Users\Administrator>diskpart

Microsoft DiskPart version 10.0.14393.0

Copyright (C) 1999-2013 Microsoft Corporation.
On computer: UNO-2484G-674XA

DISKPART> list disk

   Disk ###  Status              Size       Free       Dyn  Gpt
   -----  -
   Disk 0    Online               59 GB       10 GB

DISKPART> select disk 0 Perform similar tasks in step2 and select disk again

Disk 0 is now the selected disk.

DISKPART> create partition primary size=10240

DiskPart succeeded in creating the specified partition.

DISKPART> list partition Get the partition info

   Partition ###  Type              Size       Offset
   -----  -
   Partition 1    Primary           500 MB     1024 KB
   Partition 2    Primary           49 GB      501 MB
   * Partition 3    Primary           10 GB      49 GB

DISKPART> select partition 3 Select the unallocated partition

Partition 3 is now the selected partition.

DISKPART> format fs=ntfs quick Quick format to NTFS

100 percent completed

DiskPart successfully formatted the volume.

DISKPART> assign Assign a letter to the partition

DiskPart successfully assigned the drive letter or mount point.

DISKPART> active Activate the partition

DiskPart marked the current partition as active.

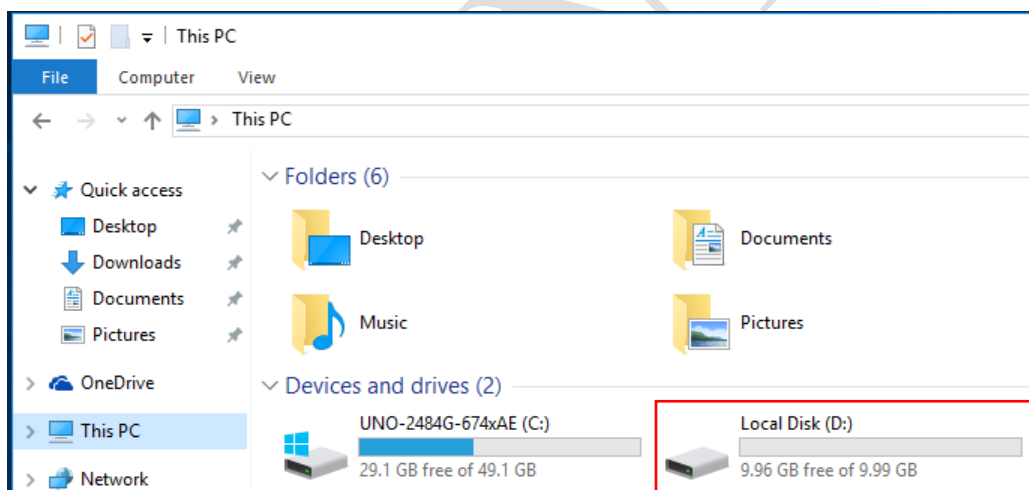
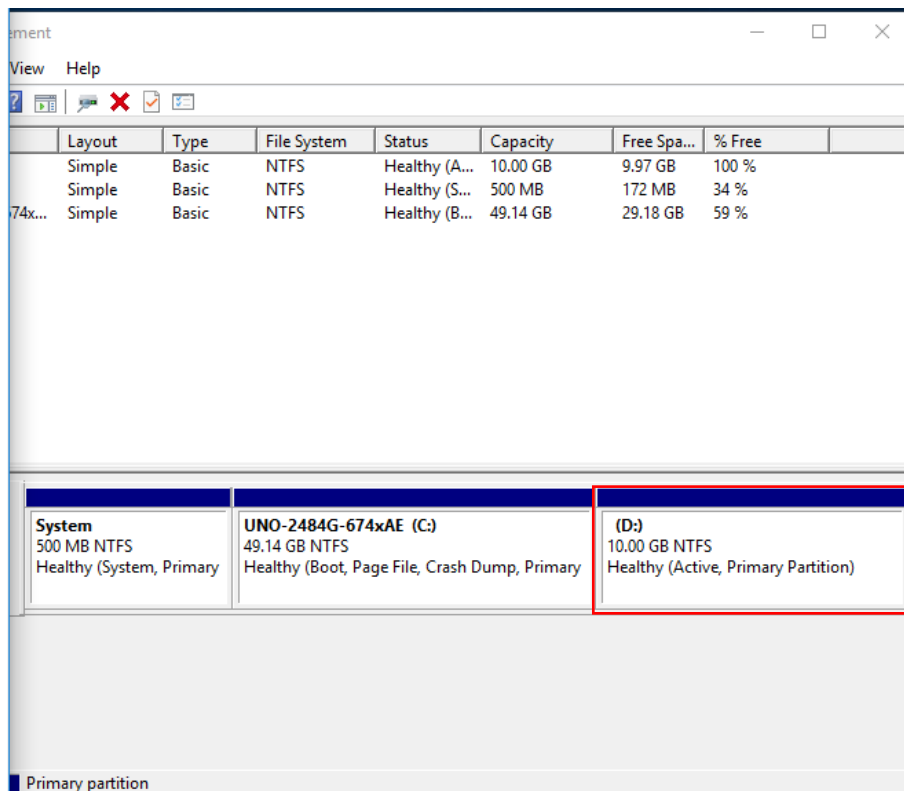
DISKPART> exit

Leaving DiskPart...

C:\Users\Administrator>
```

## Step4

Once exit the diskpart from command line, you should a usable partition created.



## Reference:

diskpart-related

[https://technet.microsoft.com/zh-tw/library/cc731894\(v=ws.11\).aspx](https://technet.microsoft.com/zh-tw/library/cc731894(v=ws.11).aspx)

<https://www.disk-partition.com/diskpart/shrink-volume-4125.html>