

Advantech AE Technical Share Document

Date	2018/4/16	SR#	1-3423983487
Category	■FAQ □SOP	Related OS	N/A
Abstract	What's the rule of ADAM-3600 getting IP under DHCP mode		
Keyword	ADAM-3600, DHCP, IP rule, Node ID		
Related Product	ADAM-3600		

■ Problem Description:

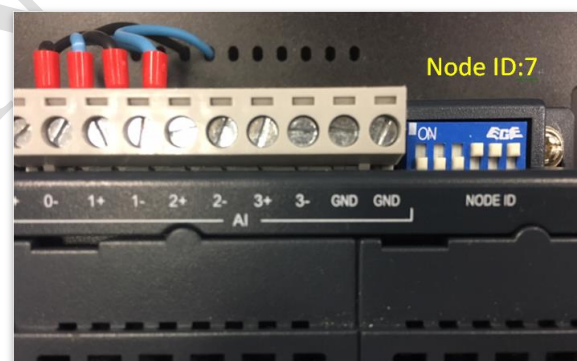
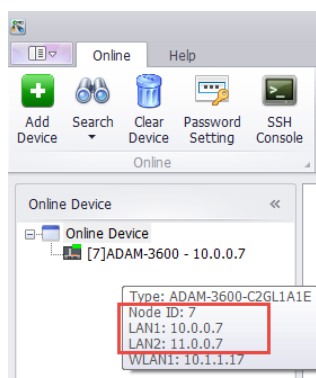
There are two LAN ports in ADAM-3600, both LAN ports are set in DHCP mode in default. This document will explain the rule for the default IP of the two LAN ports on ADAM-3600

■ Answer:

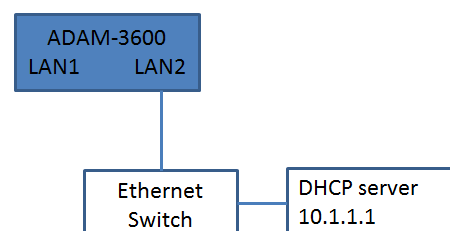
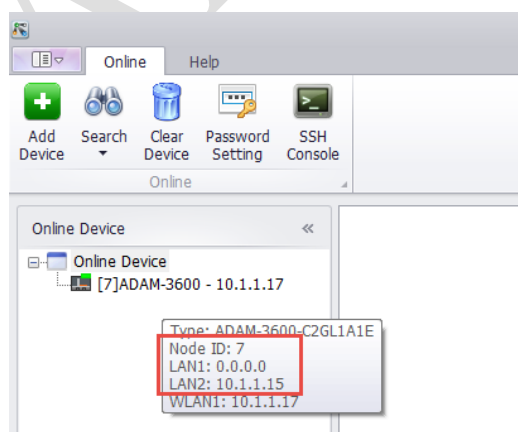
LAN 1: Default IP is 10.0.0.x if not connect to a DHCP server, X is the Node ID of ADAM-3600

LAN 2: Default IP is 11.0.0.x if not connect to a DHCP server, X is the Node ID of ADAM-3600

1. Both LAN ports are connected to PC, the IP of two LAN ports will follow above rule.



2. Only LAN2 connect to DHCP server, module gets IP of 10.1.1.15 by DHCP server.



Note: If LAN port is not connected with any devices, the default IP will be 0.0.0.0.