

Advantech AE Technical Share Document

Date	2018 / 08 / 31	SR#	1-3611491723
Category	■FAQ □SOP	Related OS	
Abstract	How to solve if it can't display normally via HDMI or DVI port		
Keyword	VGA force function, SW7		
Related Product	UNO-3283G, UNO-3285G, UNO-3285C		

■ **Problem Description:**

If user connects to HDMI or DVI port, it can't show anything on the monitor.

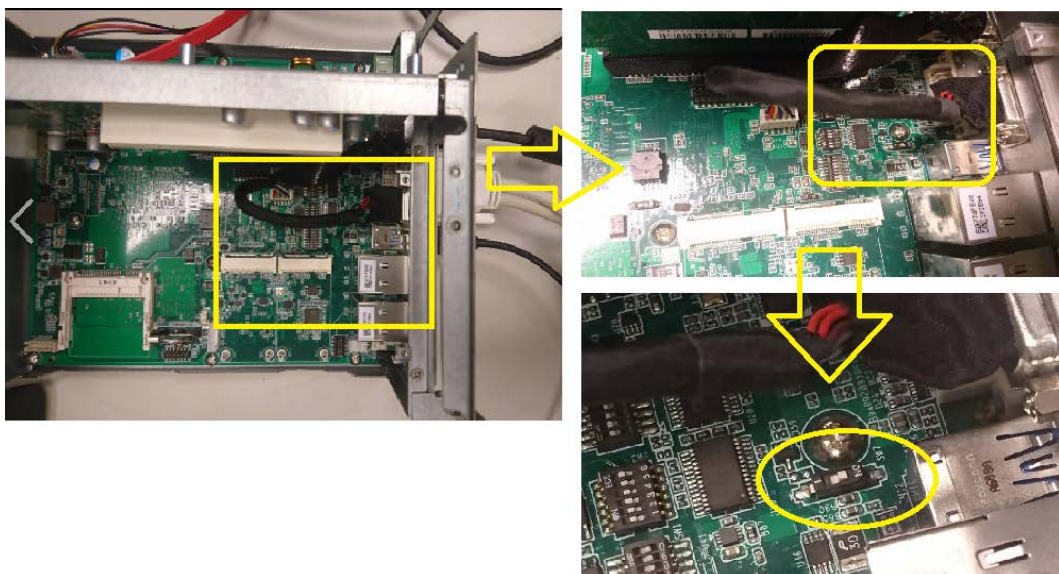
■ **Problem Analysis:**

Because of our UNO-32xx series VGA force function switch has been **position 1** in the default setting. It would enable the VGA display source for main output display.



■ **Brief Solution - Step by Step:**

Please switch SW7 to **ON mode** as below position for disable the VGA force function.



■ **Contact Window and File Link:**

If you have any questions, please contact Jerry.Cheng@advantech.com.tw