

Advantech SE Technical Share Document

Date	2019 / 01 / 19	Related Product		
Category	<input checked="" type="checkbox"/> FAQ <input type="checkbox"/> SOP <input type="checkbox"/> Driver Tech Note			
Abstract	How to Create a Block Detail			
Keyword	WebAccess/SCADA, Block, Block Details			
Related OS	Win7, Windows Server 2008 / 2012 / 2016, Win10			
Revision History				
Date	Version	Author	Reviewer	Description
2019/01/19	V1.0	Alger Tan		
2019/1/19	V1.0		Nick Liu	

■ Problem Description & Architecture:

The purpose of using Block Detail is for creating a reusable object to display tag values. Blocks allow a large number of tags to be built by specifying a single name and addressing offset. Blocks also enable the use of the Block Detail display, which is a template type display: a single display that can be used to view all blocks of the same Block Type.

■ Brief Solution - Step by Step:

- Here we use BwConst driver as an example. Let's create a block that named BwConstB.

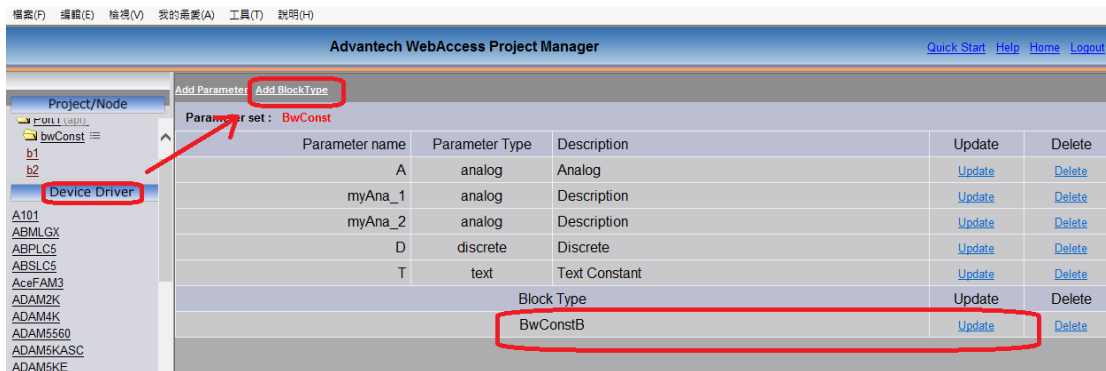


Figure 1: Create a Block

- Create tags by using BwConst Block

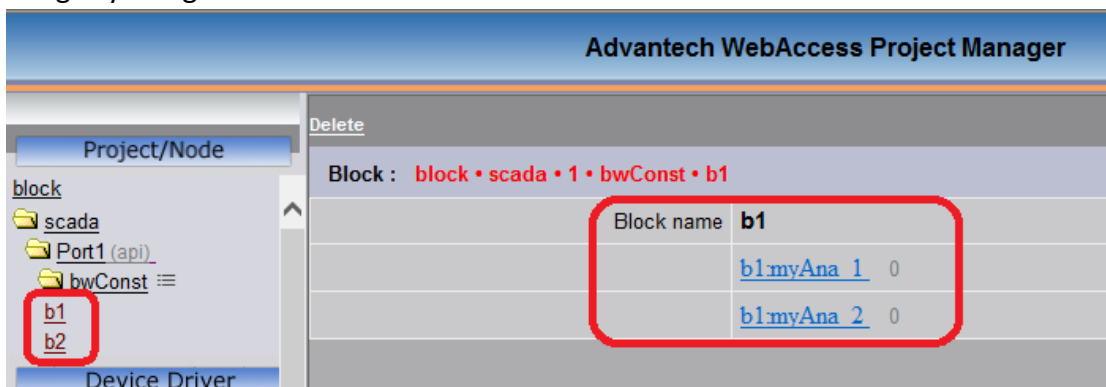


Figure 2: Create Tags by Using Block

- Assign a tag name in DrawDAQ, keep in mind that do not put BLOCK NAME in Animation Configuration

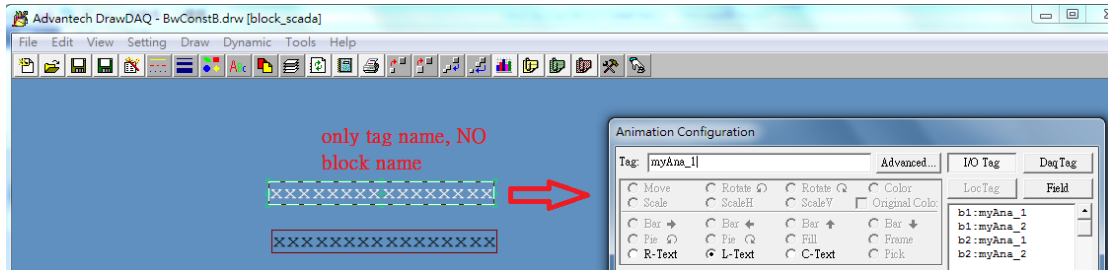


Figure 3: Setup Animation Configuration

- Assign another tag name in DrawDAQ

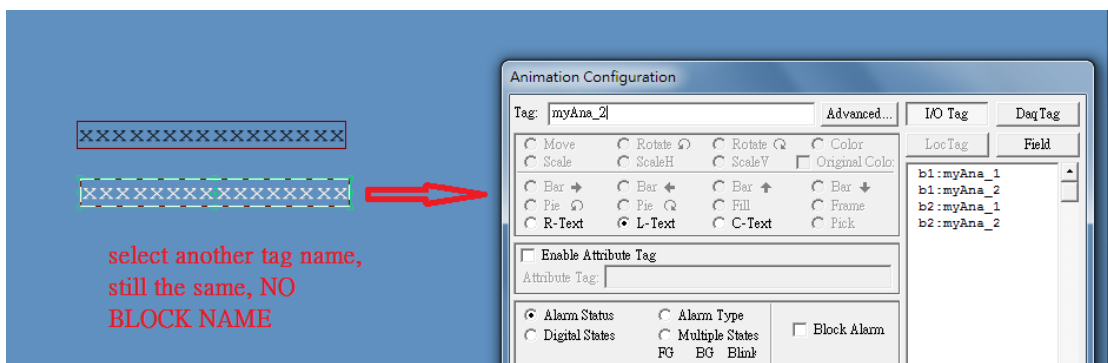


Figure 4: Animation Configuration for Next Object

- Save Block Detail: File -> Save BDX

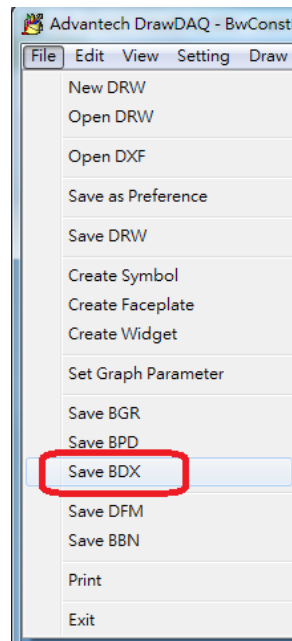


Figure 5: Save to BDX

- File name must be matched with BLOCK name, "BwConstB": Extension file name is "bd1"

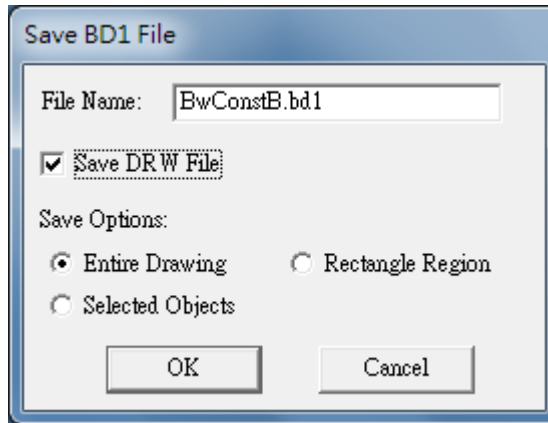


Figure 6: Save both BD1 and DRW

- Save DRW: Note: save extension file name as DXX

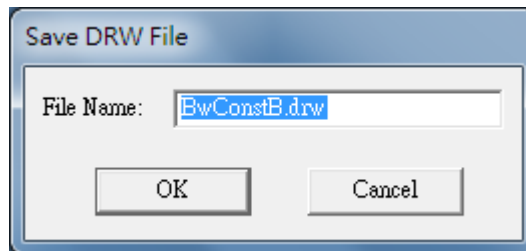


Figure 7: Save DRW

- Add a new bgr page and add two push buttons. For button down marco action, first push button goes to b1 block and second push button goes to b2 block.

Button down Marco action for first push button

- <GOTO>BLOCKDTL=b1:myAna_1

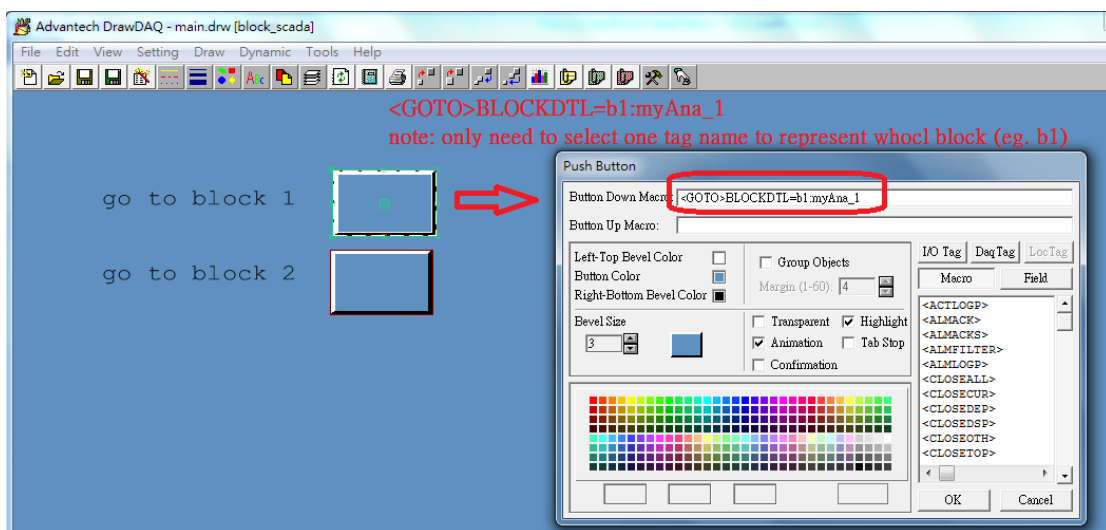


Figure 8: Push Buttons in Main.bgr

Button down Macro action for second push button

- <GOTO>BLOCKDTL=b2:myAna_1

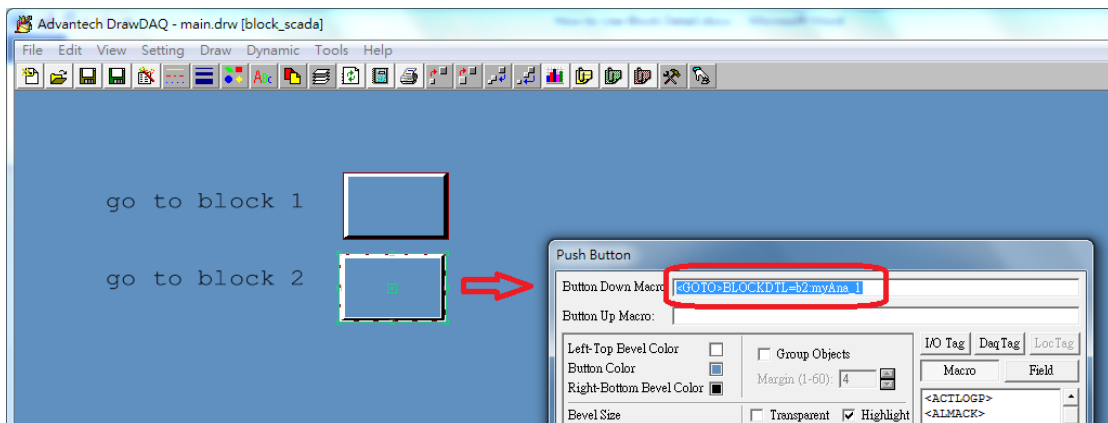


Figure 9: Second Push Button Configuration

9. Save both bgr and drw (e.g. main.bgr and main.drw), then download DrawDAQ. The following is result in ViewDAQ.

By clicking go to block 1 push button in main.bgr, ViewDAQ will go to the Block Detail template and display b1 block tag values

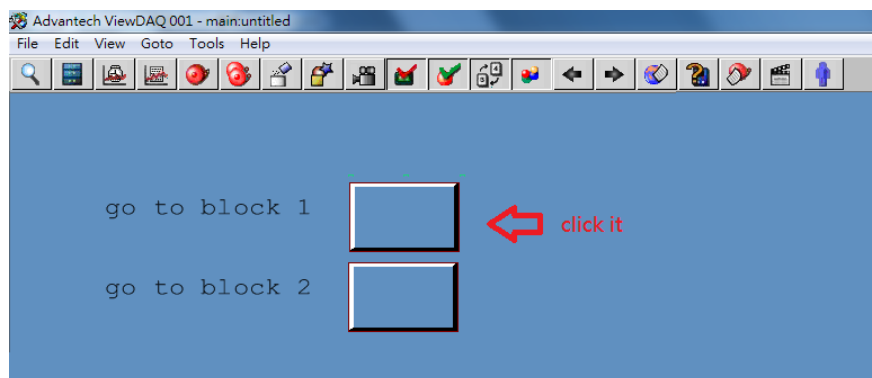


Figure 10: main.bgr in ViewDAQ

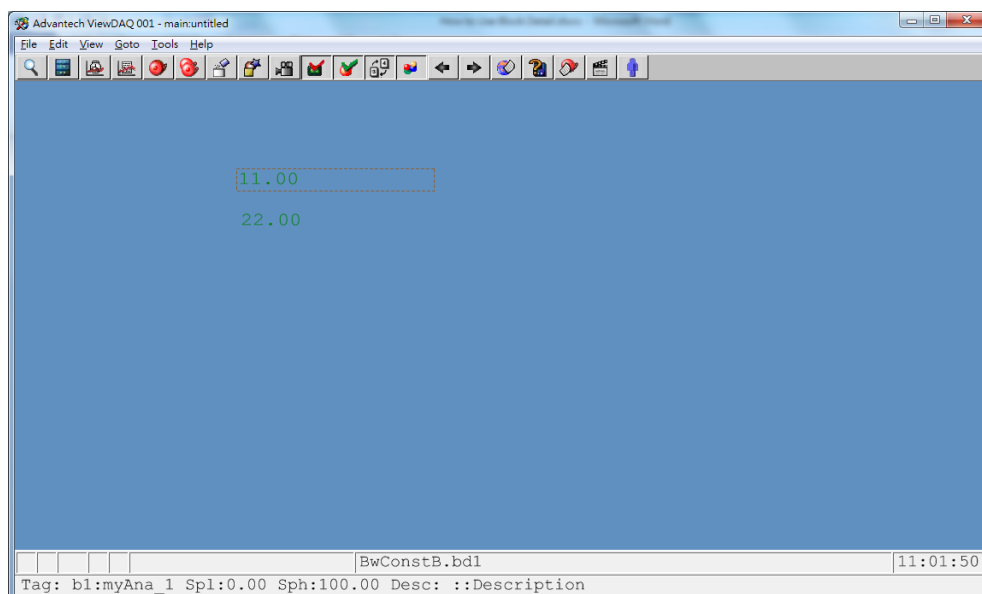


Figure 11: display b1 tag values in BwConstB.bd1

■ **Pin Definition (in case of serial connection):**

■ **Reference:**

WebAccess User Manual 9.2.3 Block Detail