

Advantech AE Technical Sharing Documentation

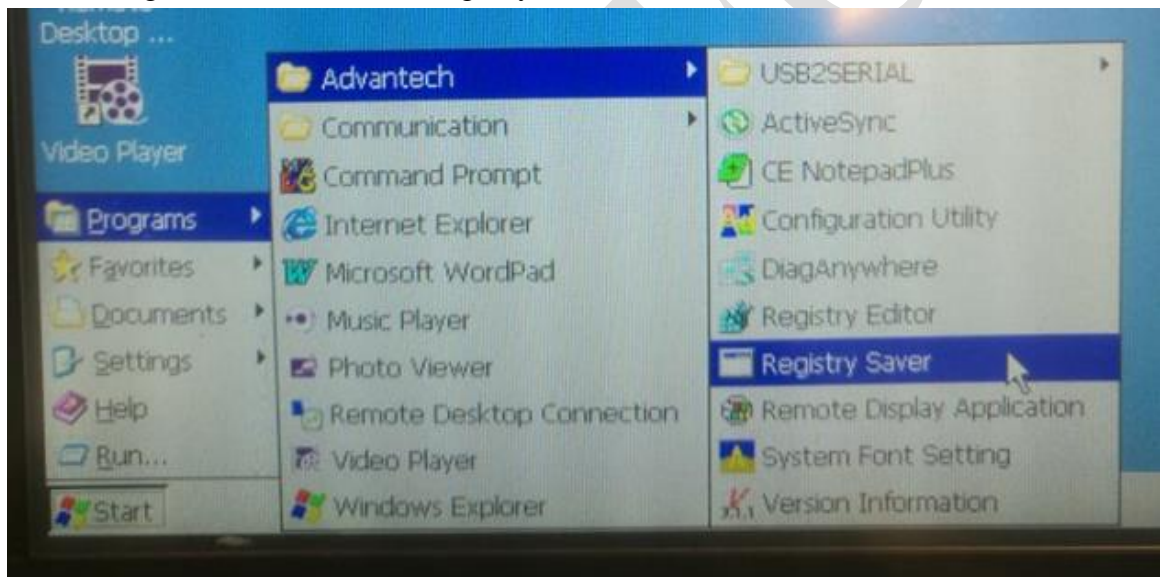
Date	2019 / 08 / 16	SR#	1-3863482211
Category	■FAQ □ SOP	Related OS	CE, WEC
Abstract	How to keep data in WinCE system.		
Keyword	WinCE,		
Related Product	WOP, TPC, PPC, UNO, WINCE		

■ **Problem Description:**

CE / WEC are a read-only system. Every time you reboot, you will not see any changes to the system. If you want to change system settings or save data to the system, here are two ways.

■ **Brief Solution - Step by Step:**

- I. Once you edit the registry, you need to save the status of the change.
Start→Programs→Advantech→Registry



1. How to keep the file? You need to put the file under path \harddisk. WINCE system will save the files in this directory.