

VEGA-330 Intel™ Movidius™ Myriad X Edge AI Module

Startup Manual

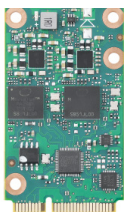
Packing List

Before you start installing your card, please make sure that the following items have been shipped:

- 1 x VEGA-330 card
- 1 x 1960092232T000 heatsink with thermal pad
- 1 x Edge AI Suite download card
- 2 x 1930006235-01 screws (color: Black)
- 2 x 193B0204C0 screws (color: Silver)
- 1 x Startup manual
- 1 x China RoHS

If any of these items are missing or damaged, please contact your distributor or sales representative immediately.

Product Pictures



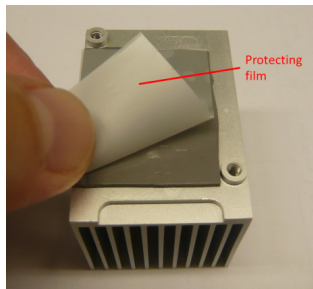
Top View



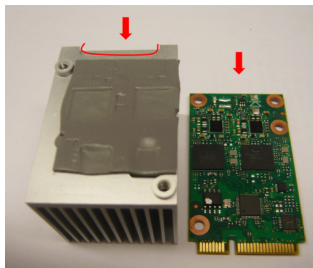
Bottom View

Heatsink Installation

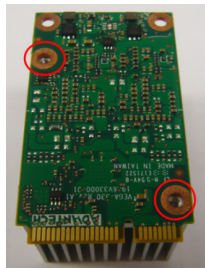
1. Remove the thermal pad protecting film.



2. Check the installation direction as below, the top side of the VEGA-330 has components which generate heat, and should contact directly with the thermal pad.



3. Align the two diagonal screw holes of the VEGA-330 to the screw holes of heatsink, and tap VEGA-330 top side and heatsink together.



For more information on this and other Advantech products, please visit our website at:

<http://www.advantech.com>

For technical support and service, please visit our support website at:

<http://support.advantech.com>

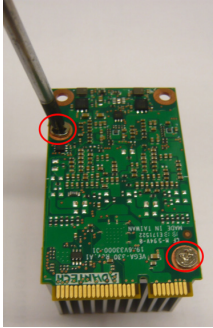
This manual is for the VEGA-330.

Part No. 2046033000
Printed in China

1st Edition
July 2019

Heatsink Installation (Cont.)

- Secure VEGA-330 and heatsink with the two 193B0204C0 screws (color: Silver) in box.



- Secure VEGA-330 with heatsink to mainboard mini-PCIe slot with the two 1930006235-01 screws (color: Black) in box.

