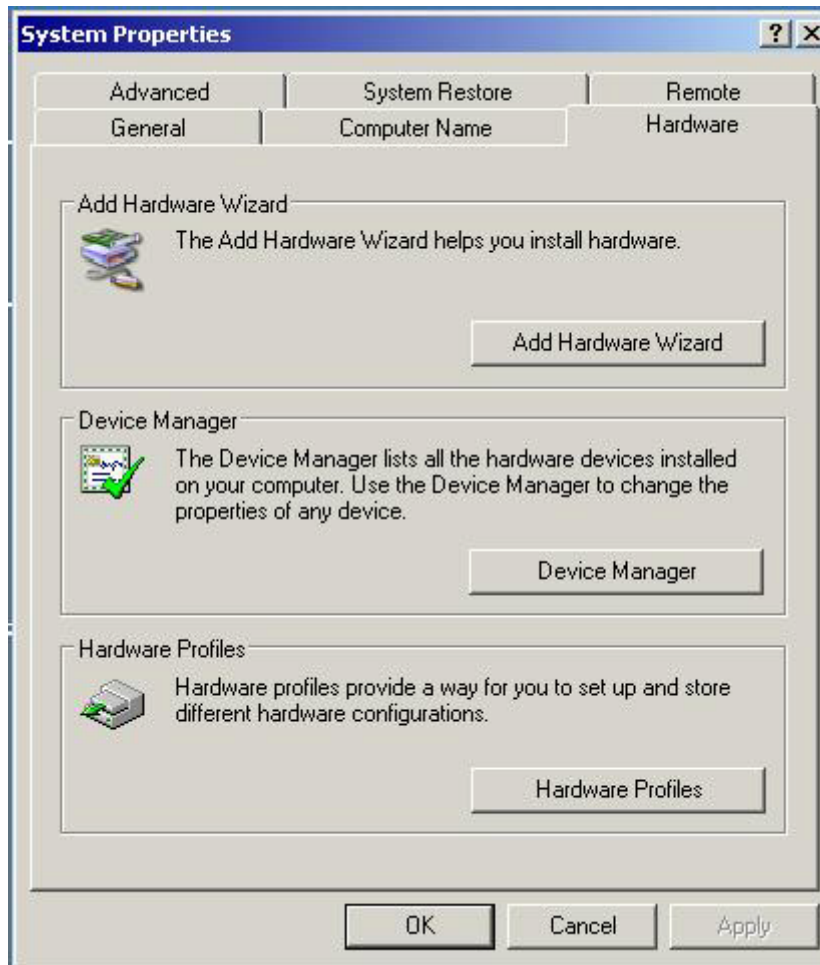


# UNO-2170 COM3/COM4 Windows 2K/XP Driver

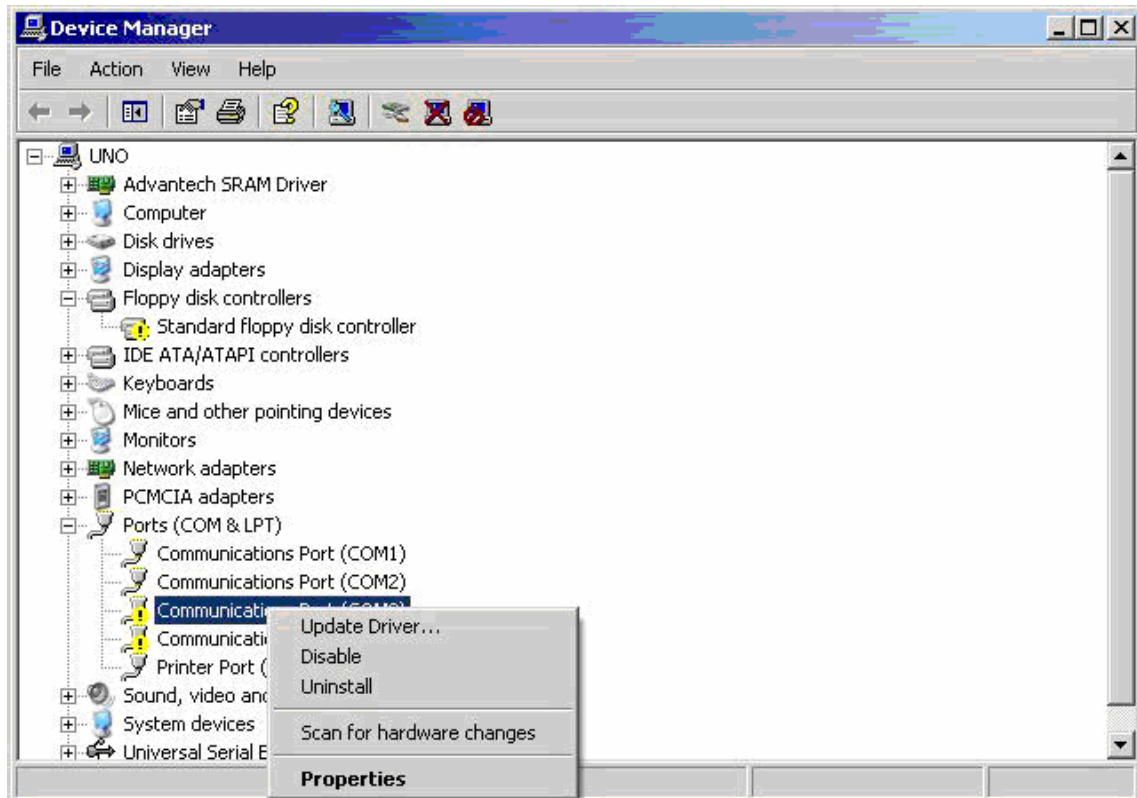
## Installation Guide

This document introduces how to setup UNO-2170 COM3/COM4 serial port under Windows2K/XP platform.

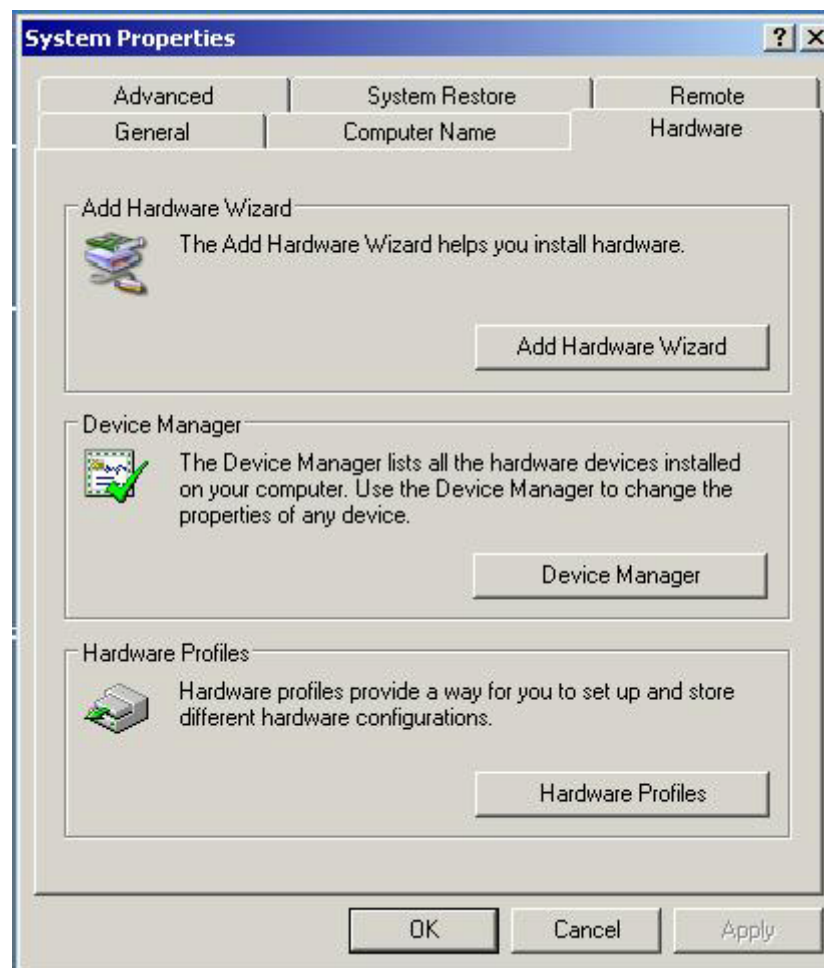
<Step1> Right-click **"My Computer"**, and select **"properties"**. Press the **"Device Manager"** button to configure the devices of UNO-2170.



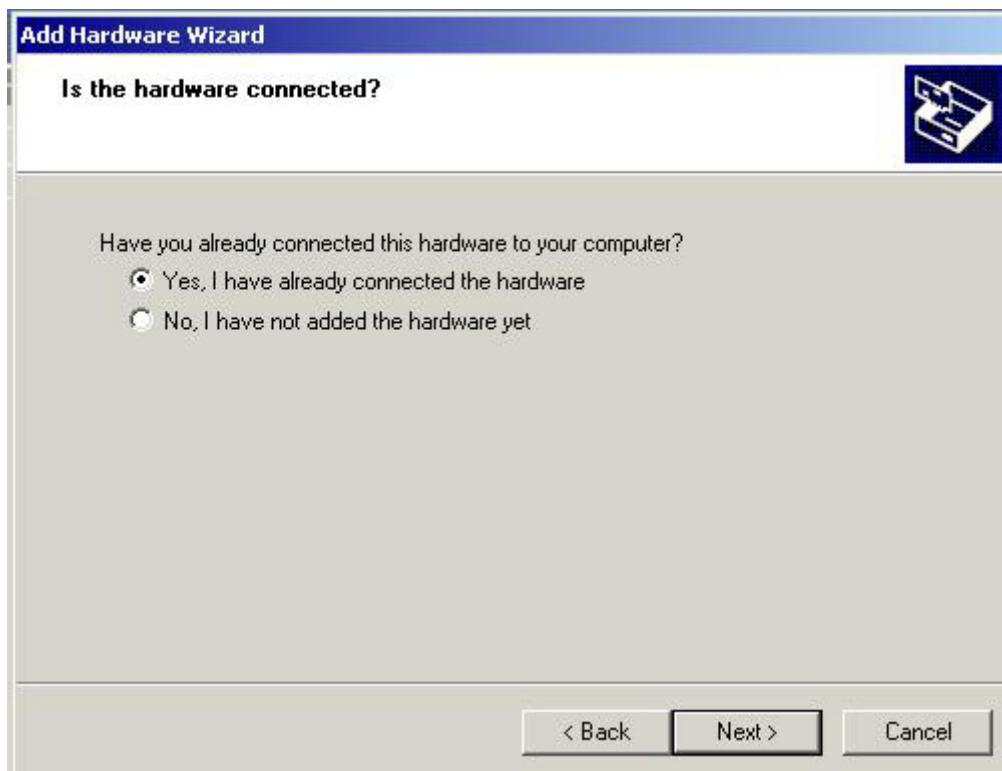
<Step2> Right-click the “**COM3/COM4**” and select “**Uninstall**” to uninstall COM3/COM4 of UNO-2170.



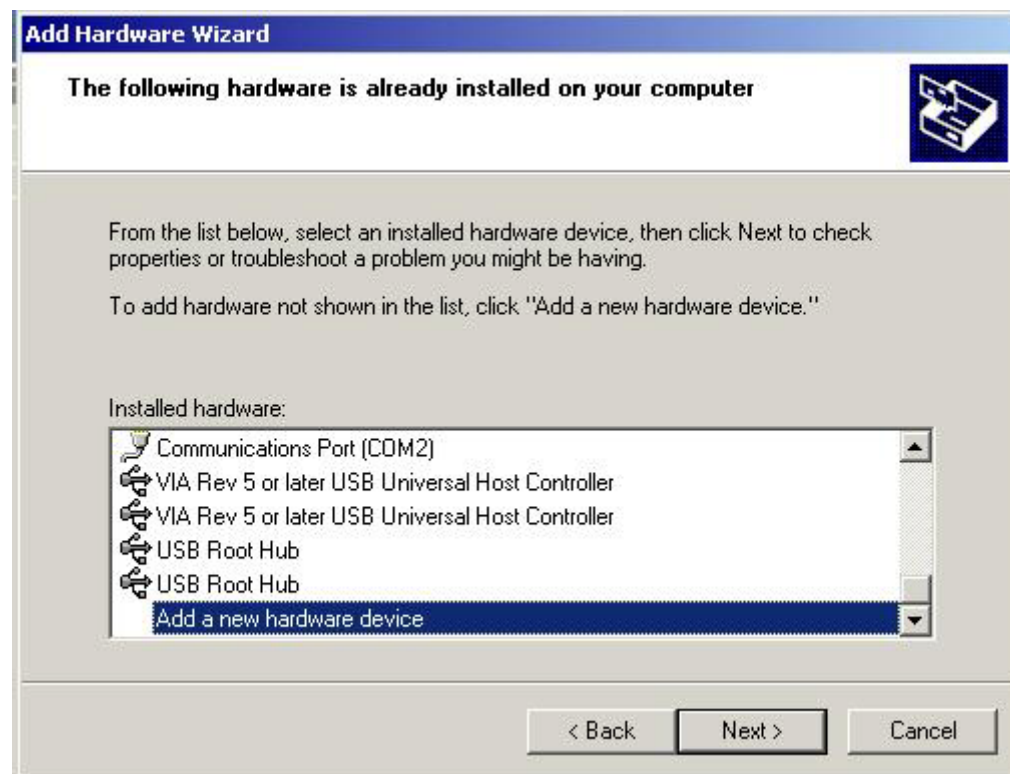
<Step3> Right-click **"My Computer"**, and select **"properties"**. Press the **"Add Hardware Wizard"** button to add new device (COM3) of UNO-2170.



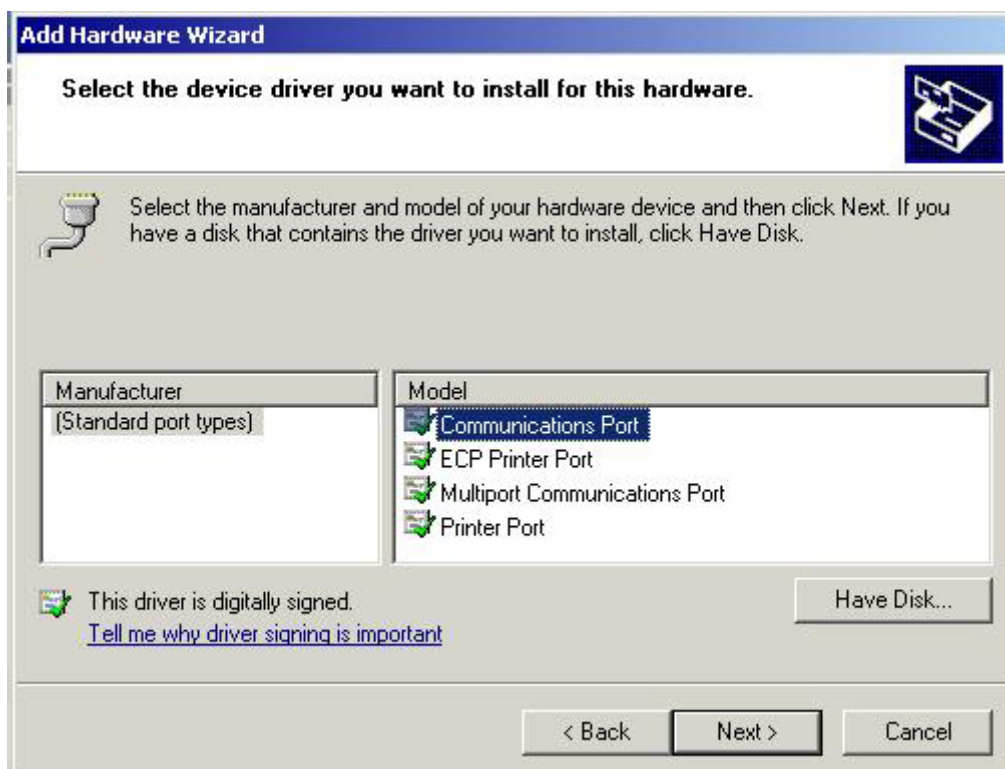
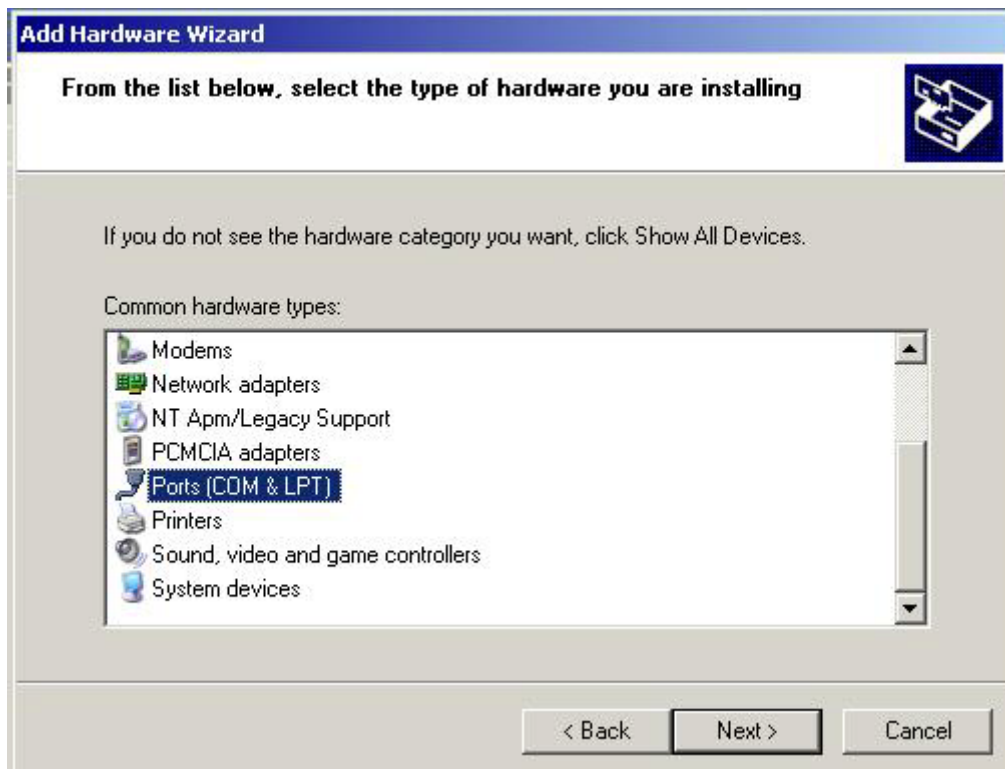
<Step4> Press “Next”, and choose “I have already connected the hardware”.



<Step5> Select **"Add a new hardware device"**, and choose **"Install the hardware that I manually select from a list [Advance]"**.



<Step6> Select **"Port [COM&LPT]"**Æ **"Communication Port"**, and press the **"Next"** button to finish the whole process.

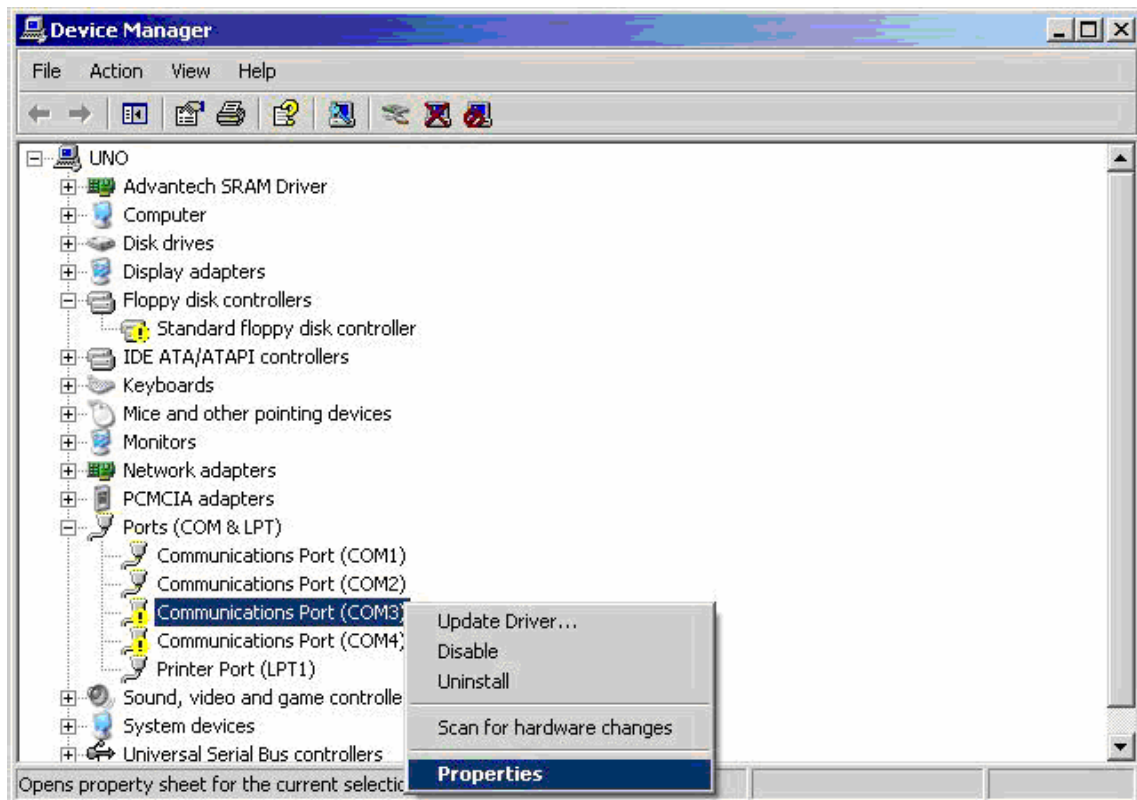




Repeat <Step3>~<Step6> to add new device (COM4) of UNO-2170.

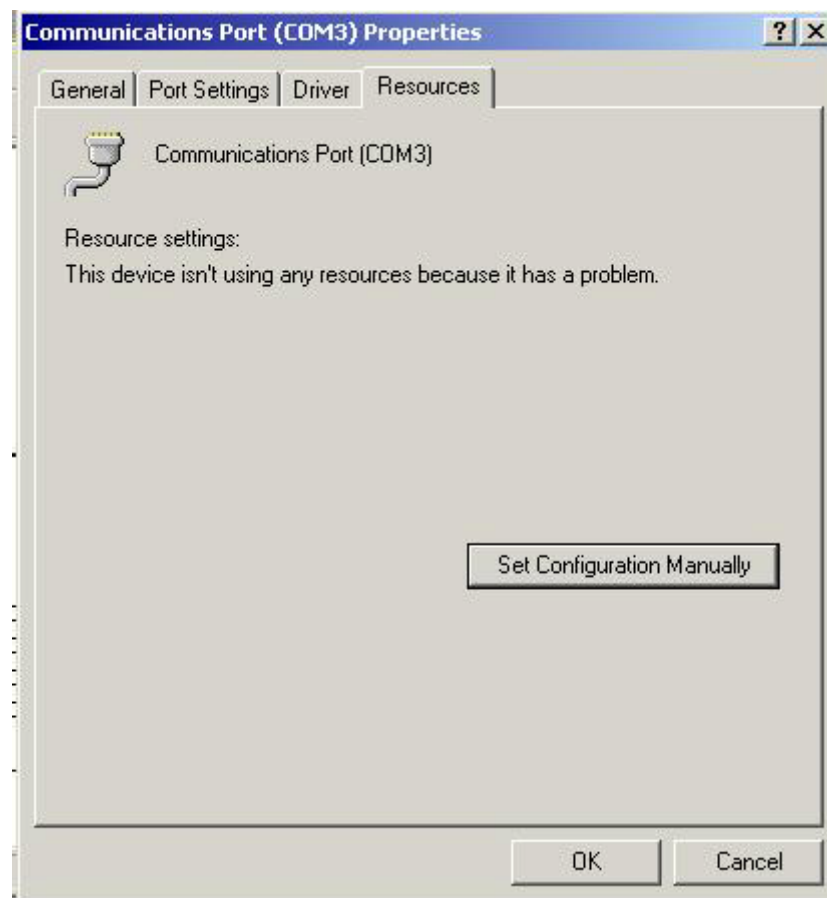


<Step7> Right-click the “**COM3**” under device manager and select “**properties**” to configure the parameters of COM3 of UNO-2170.

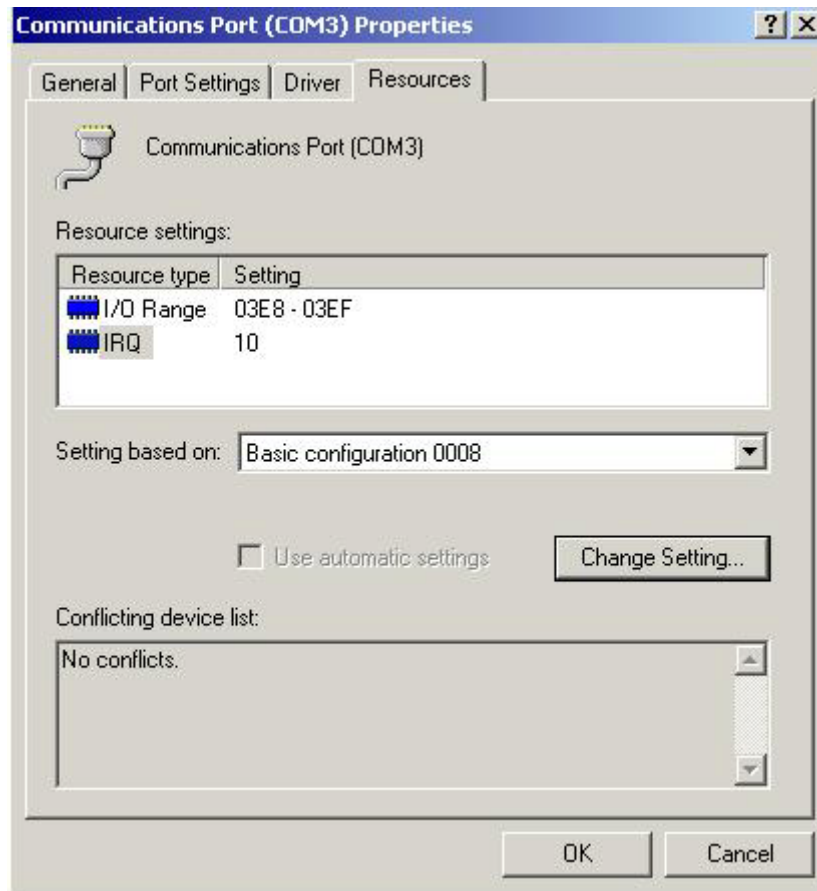




<Step8> Select the “**Resources**” tag of COM3 properties, and press the “**Set Configuration Manually**” button.



<Step9> Click “**Setting based on**” and select “**Basic configuration 0008**”. Change the **IRQ** to “**10**” and the **I/O range** to “**03E8-03EF**” for COM3.



Repeat <Step7>~<Step9> to configure the parameters of COM4 of UNO-2170. Set the **IRQ** to “**10**” and **I/O range** to “**02E8-02EF**” for COM4.

<Step10> Restart UNO-2170, and COM3/COM4 will be enabling.

