

Advantech AE Technical Share Document

| | | | |
|-----------------|---|------------|--------------|
| Date | 2018 / 04 / 12 | SR# | 1-3972092768 |
| Category | ■FAQ□SOP | Related OS | N/A |
| Abstract | How to solve COM 3 port RS-485 communication not stable with ADAM-4017+ | | |
| Keyword | Terminal resistor, ADAM-4017+, UNO-2473G | | |
| Related Product | UNO-2473G | | |

■ Problem Description:

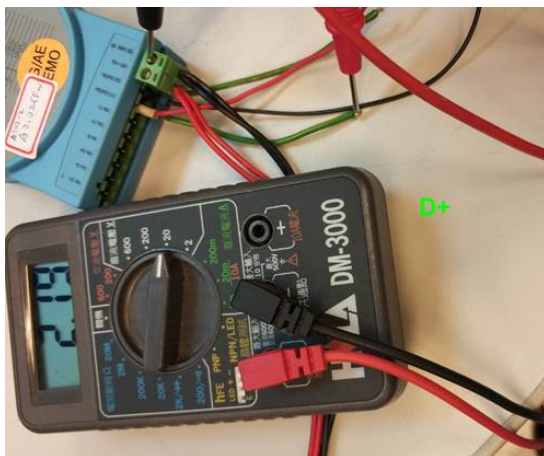
UNO-2473 COM 3 switches to RS485 and communicates with ADAM-4017+ would happen ADAM sometimes can't be recognized symptom.

■ Problem Analysis:

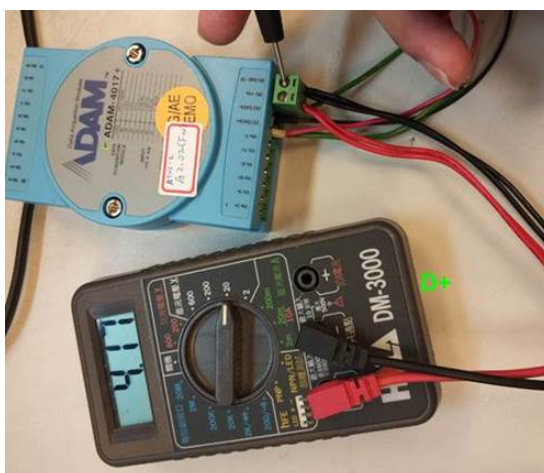
Because of the UNO-2473G-J3AE onboard terminal resistor default setting is on. The resistance isn't enough to pull high when the platform doesn't transmit the data. And it leads the voltage difference of D+ and D- not stable.

Removing the resistor R551 and R564 for turning off the terminal resistor function. COM3 RS-485 D+ & D- voltage difference become would become wider and the compatibles become better in the short distance transmission.

Before



After

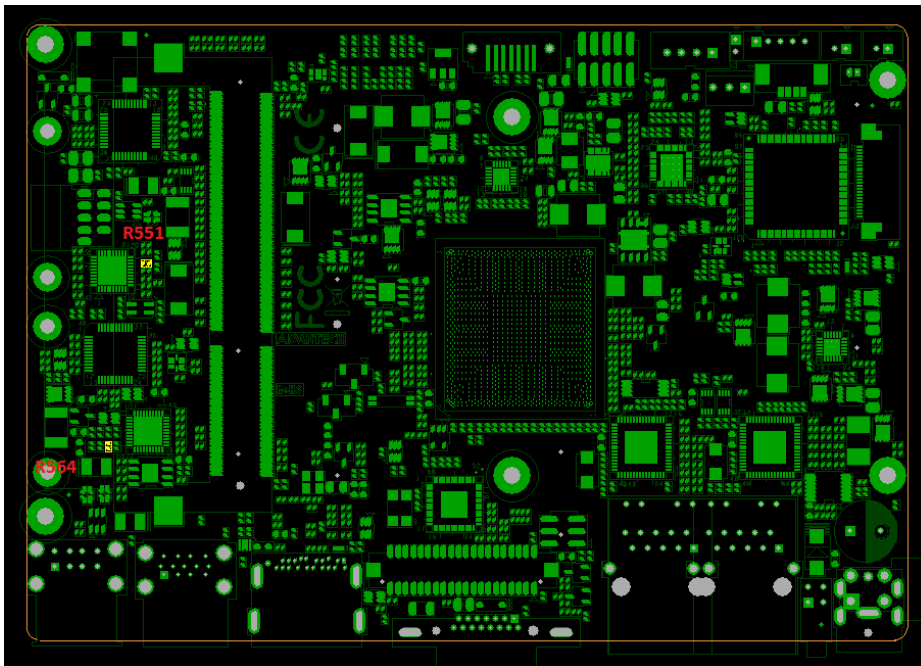


■ **Brief Solution - Step by Step:**

According to the warranty policy, please contact Advantech office technical support or send the unit to RMA department for modifying.

DO NOT re-working by non-Advantech members.

R551 and R564 PCB position as the below image.



■ **Contact Window and File Link:**

If you have any questions, please contact Jerry.Cheng@advantech.com.tw