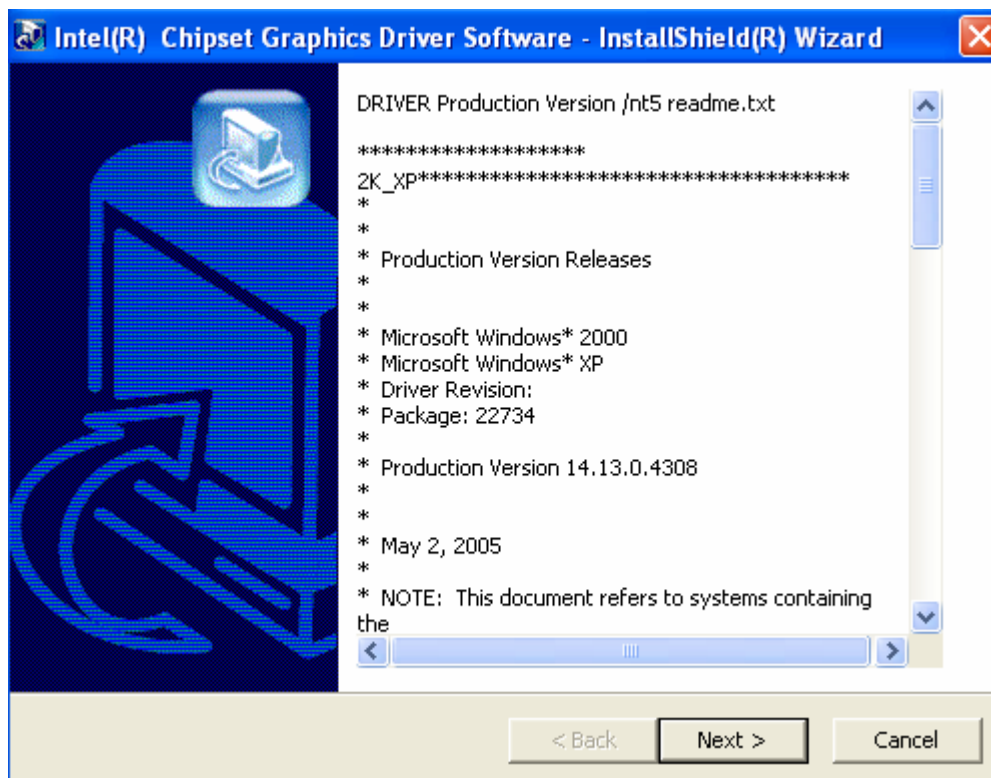


UNO-2170 VGA Installation Guide

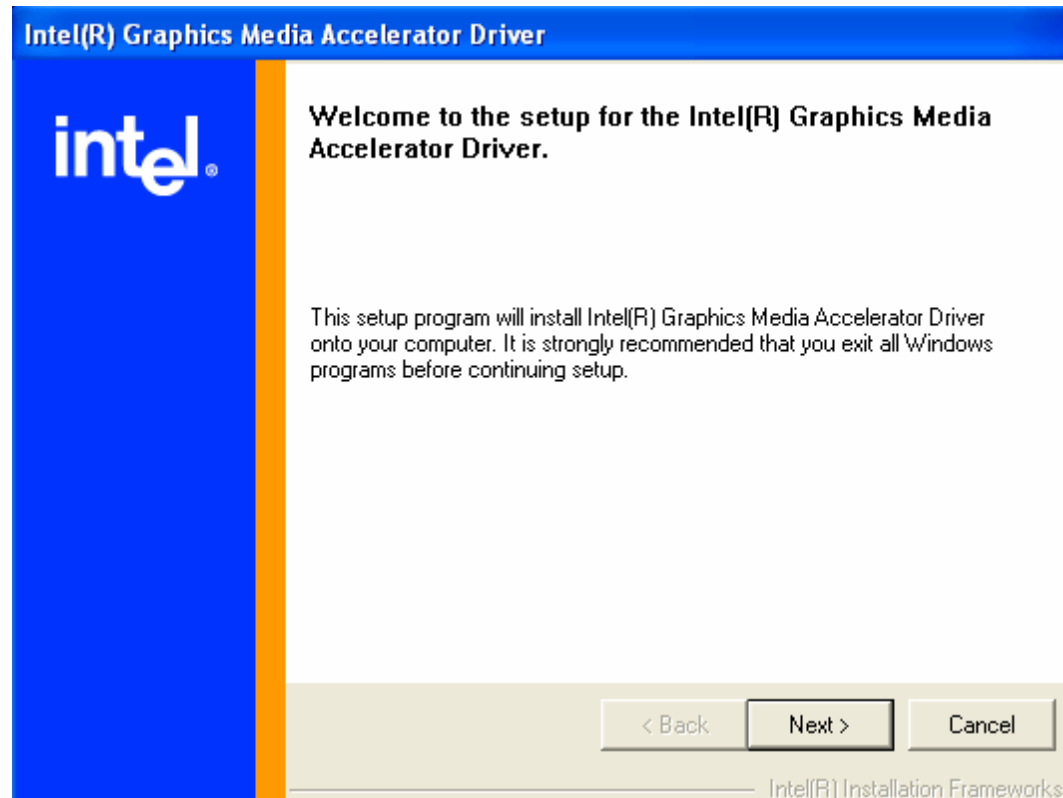
The UNO-2170 provides a VGA controller (Intel 855/852 GME, supports a single 1.5V accelerated graphics port interface) for a high resolution VGA interface. The 350 MHz integrated 24-bit RAMDAC can drive a standard progressive scan analog monitor with pixel resolution up to 1600x1200 at 85 Hz and up to 2048x1536 at 75 Hz.

This document introduces how to install and configure UNO-2170 VGA driver under Windows2K/XP platform.

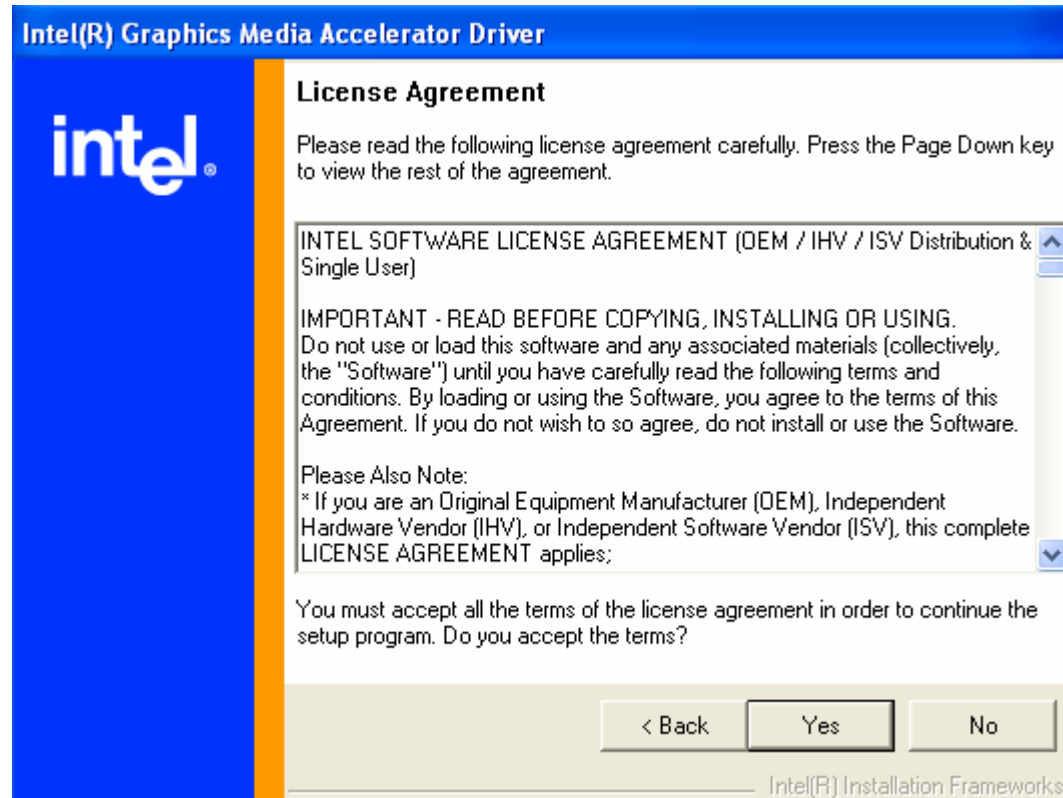
<Step1> Insert the UNO-2000 Driver and Utility CD in the CD-ROM, and execute **win2k_xp1413.exe** from following path:
\\UNO-2170\Driver\VGA\WIN2K_XP\



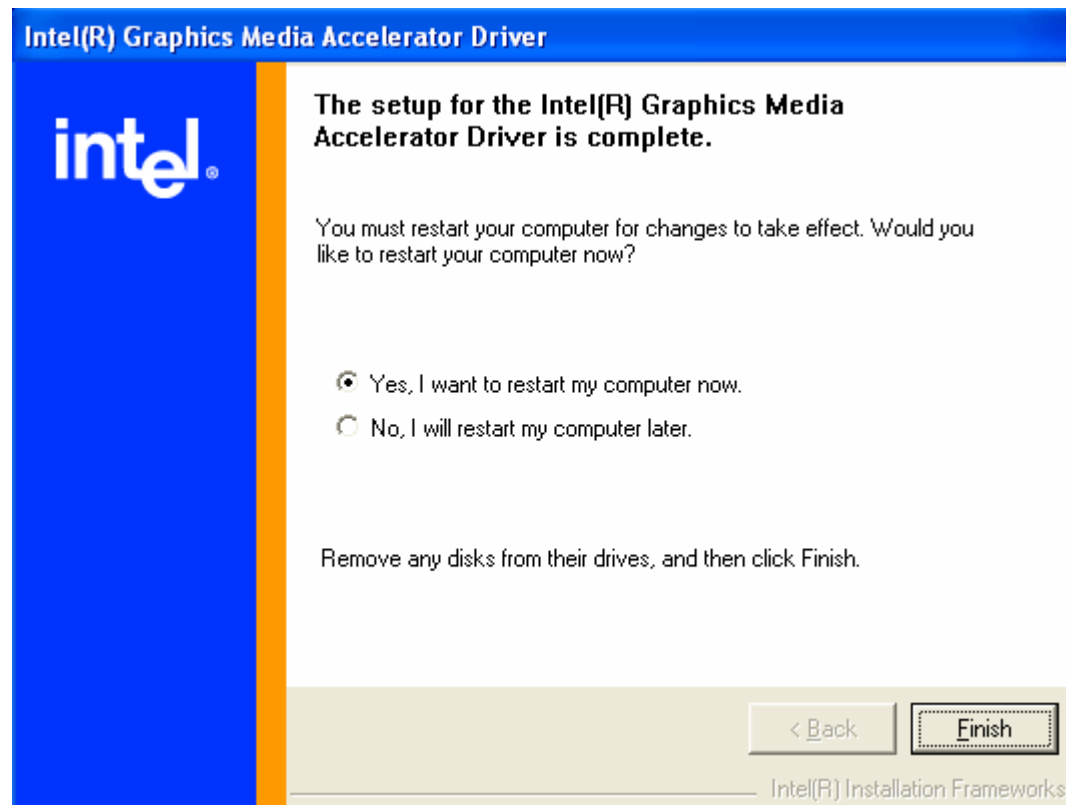
<Step2> Click the **Next** button to install VGA driver.



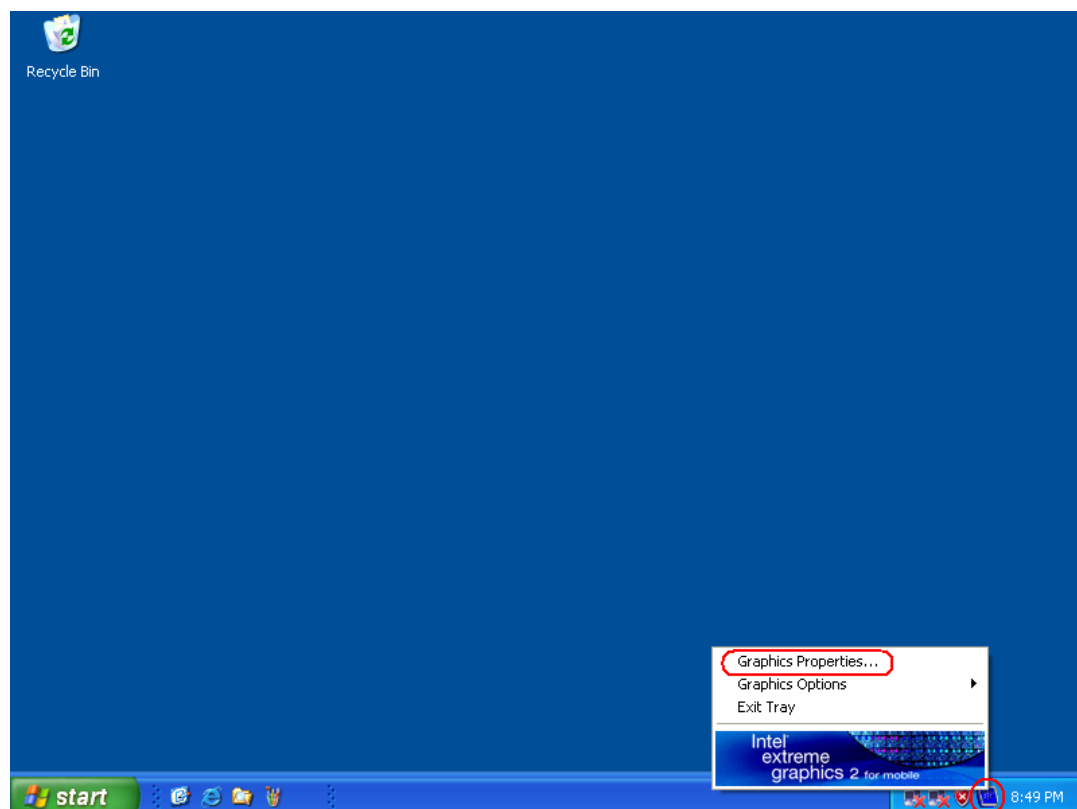
<Step3> Click **Yes** button to start the driver installation.



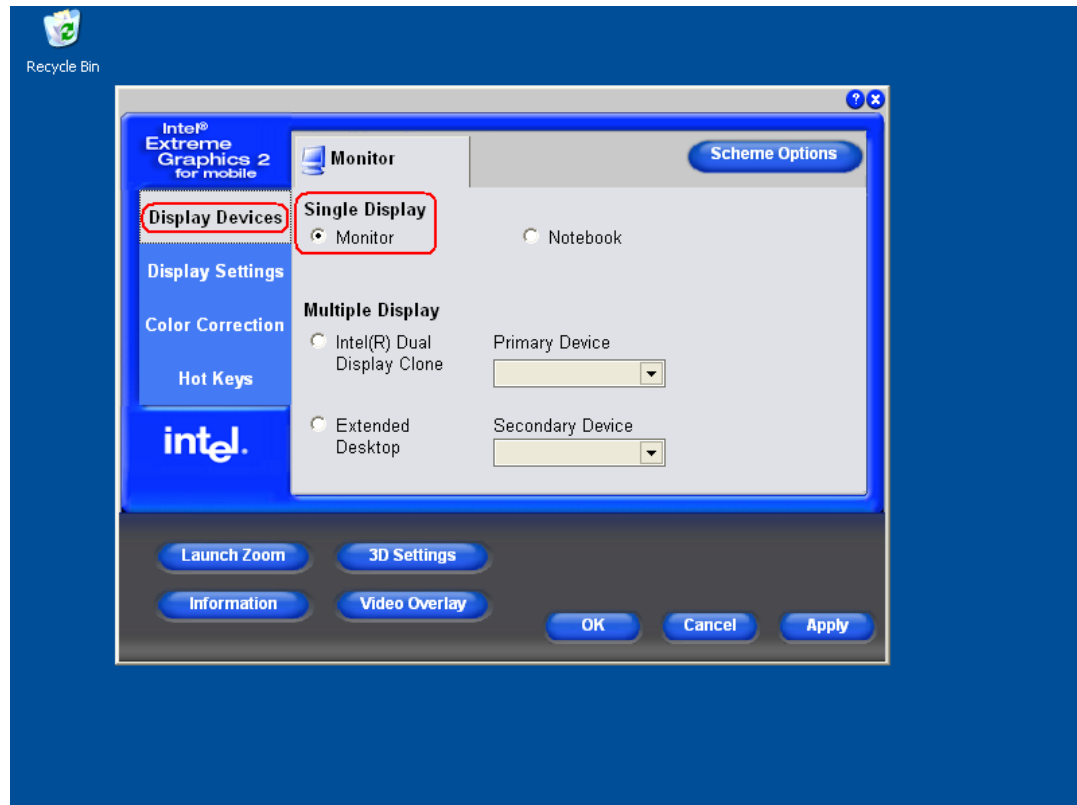
<Step4> Click **Finish** to restart the system.



<Step5> Right click **Graphic Icon** and then select **Graphics Properties**.



<Step6> Select **Display Devices** and check **Single Display - Monitor**.



<Step7> Select **Hot Keys**, un-check **Enable Hot Keys** and then click **Apply** and **OK**.

