

Advantech SE Technical Share Document

| | | | | |
|------------------|---|-----------------|----------|-------------|
| Date | 2019 / 12 / 04 | Related Product | CODESYS | |
| Category | <input type="checkbox"/> FAQ <input checked="" type="checkbox"/> SOP <input type="checkbox"/> Driver Tech Note | | | |
| Abstract | How to use CODESYS visualization frame? | | | |
| Keyword | Softmotion, Virtual Axis | | | |
| Related OS | N/A | | | |
| Revision History | | | | |
| Date | Version | Author | Reviewer | Description |
| 2019/12/04 | V1.0 | Owen.Chang | Nick.Liu | |
| | | | | |
| | | | | |

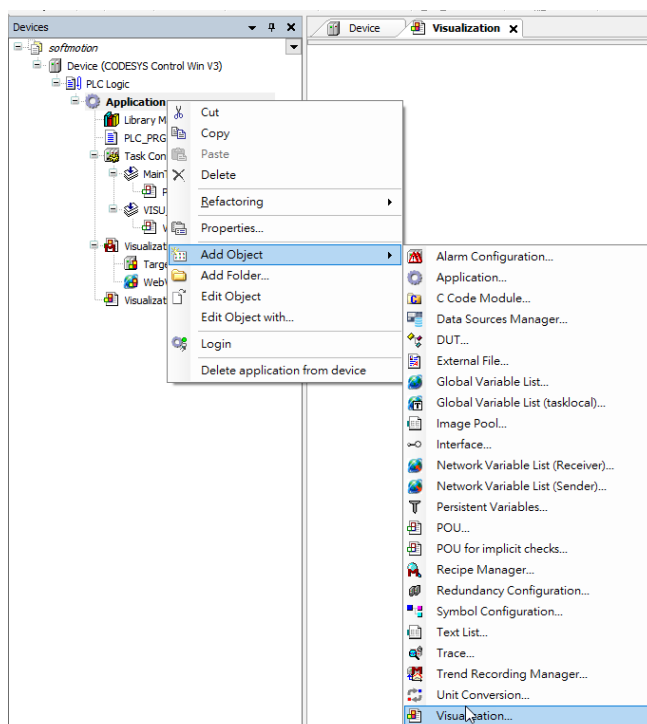
■ Problem Description & Architecture:

You can reference other visualizations within a main visualization either in a frame or a tab control and then display them in the window pane of the element.

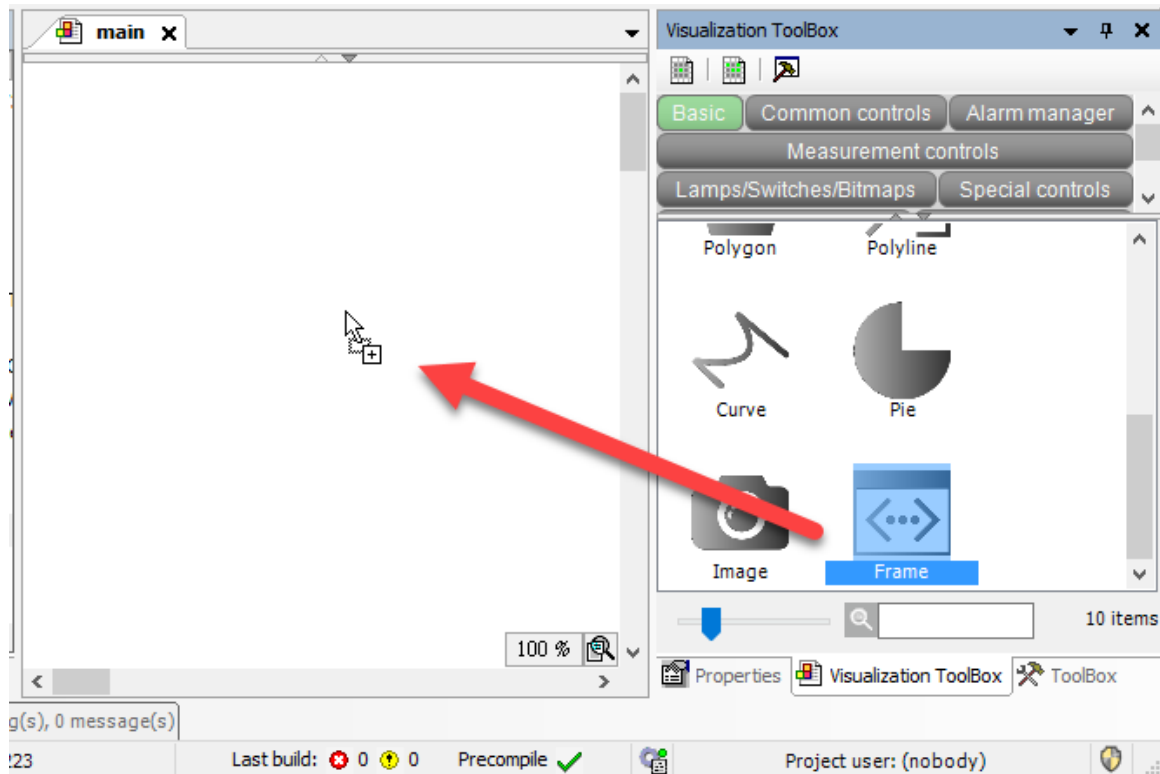
In the case of the Frame element, you can freely program which of the visualizations is displayed at which time. One option is to use the switch frame variable of the frame element, which automatically triggers a switch according to its value. You can also program additional controls which, after user input, trigger input actions that result in switching a visualization.

■ Brief Solution - Step by Step:

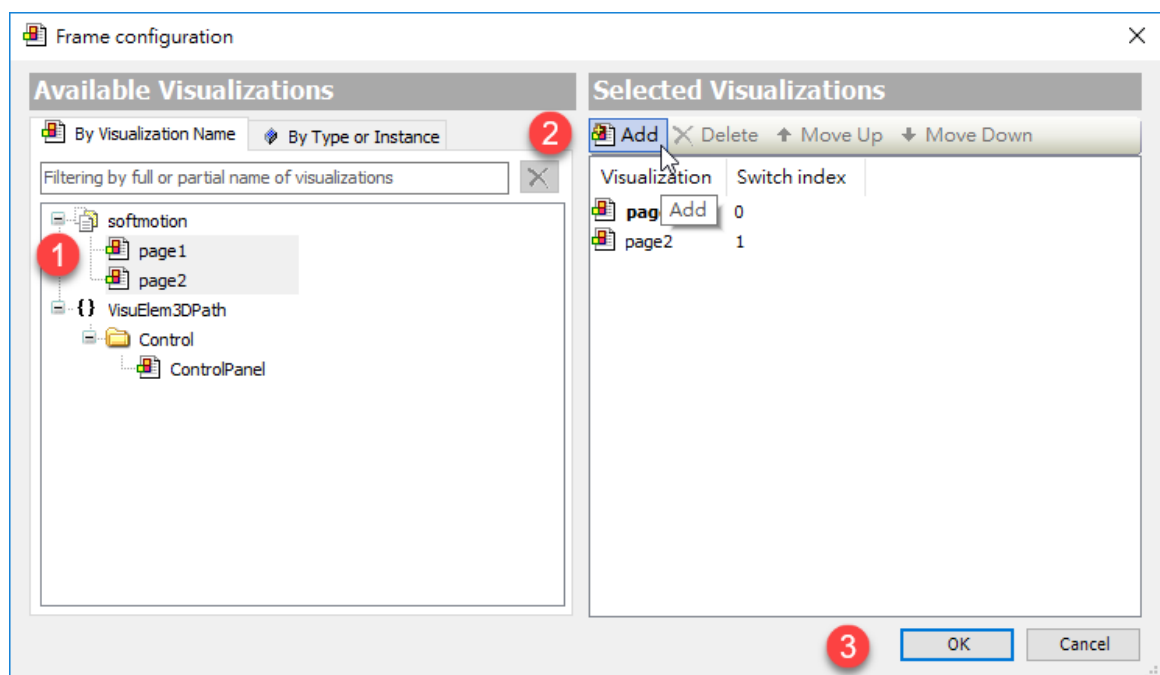
1. Add three visualization page, main, page1 and page2



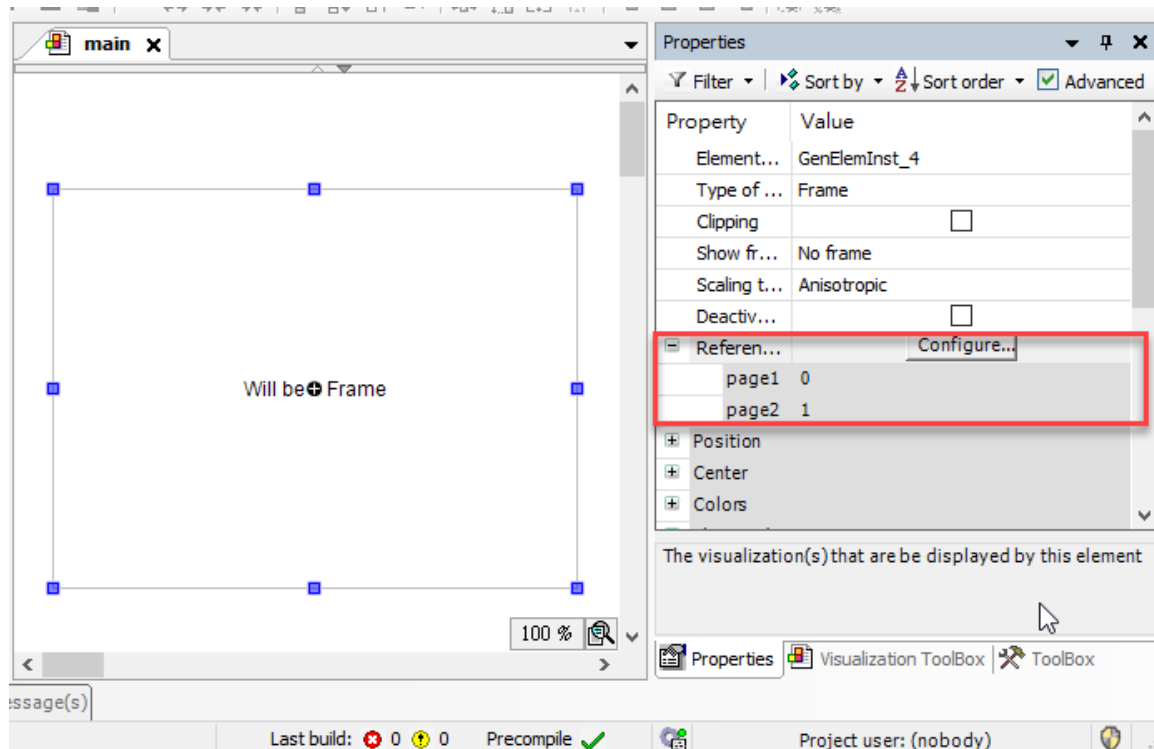
2. At main page, add frame



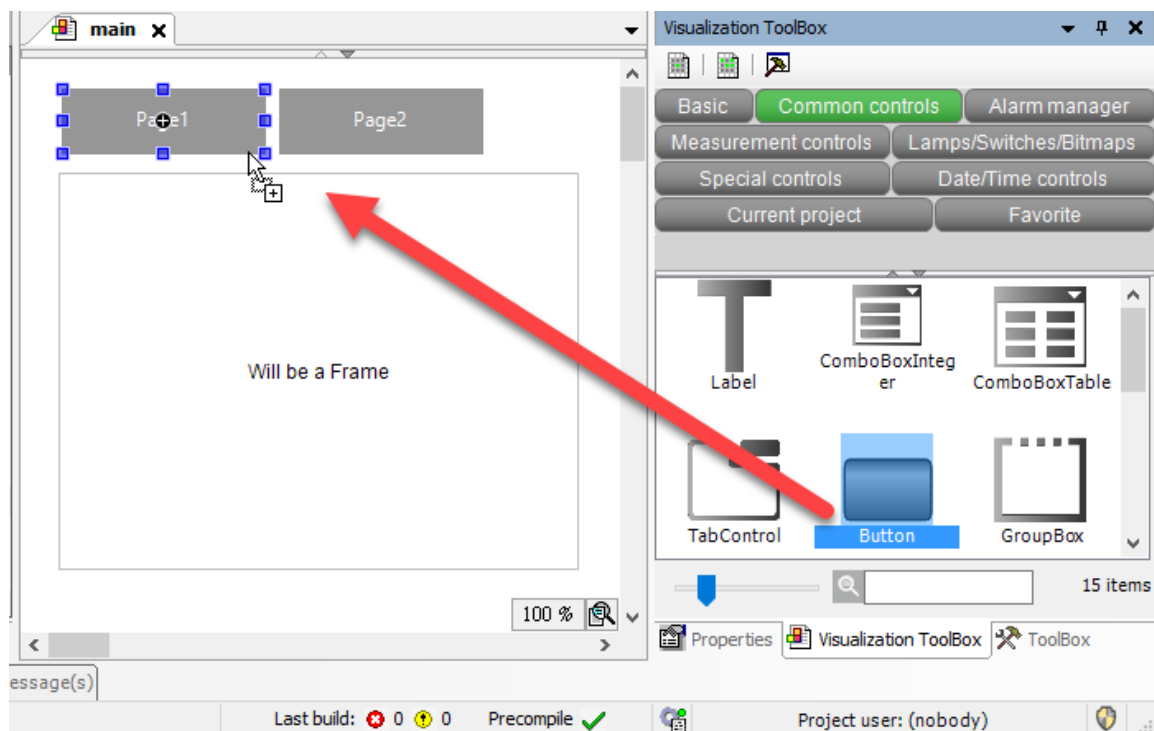
3. Choose the visualization frame will switch to.



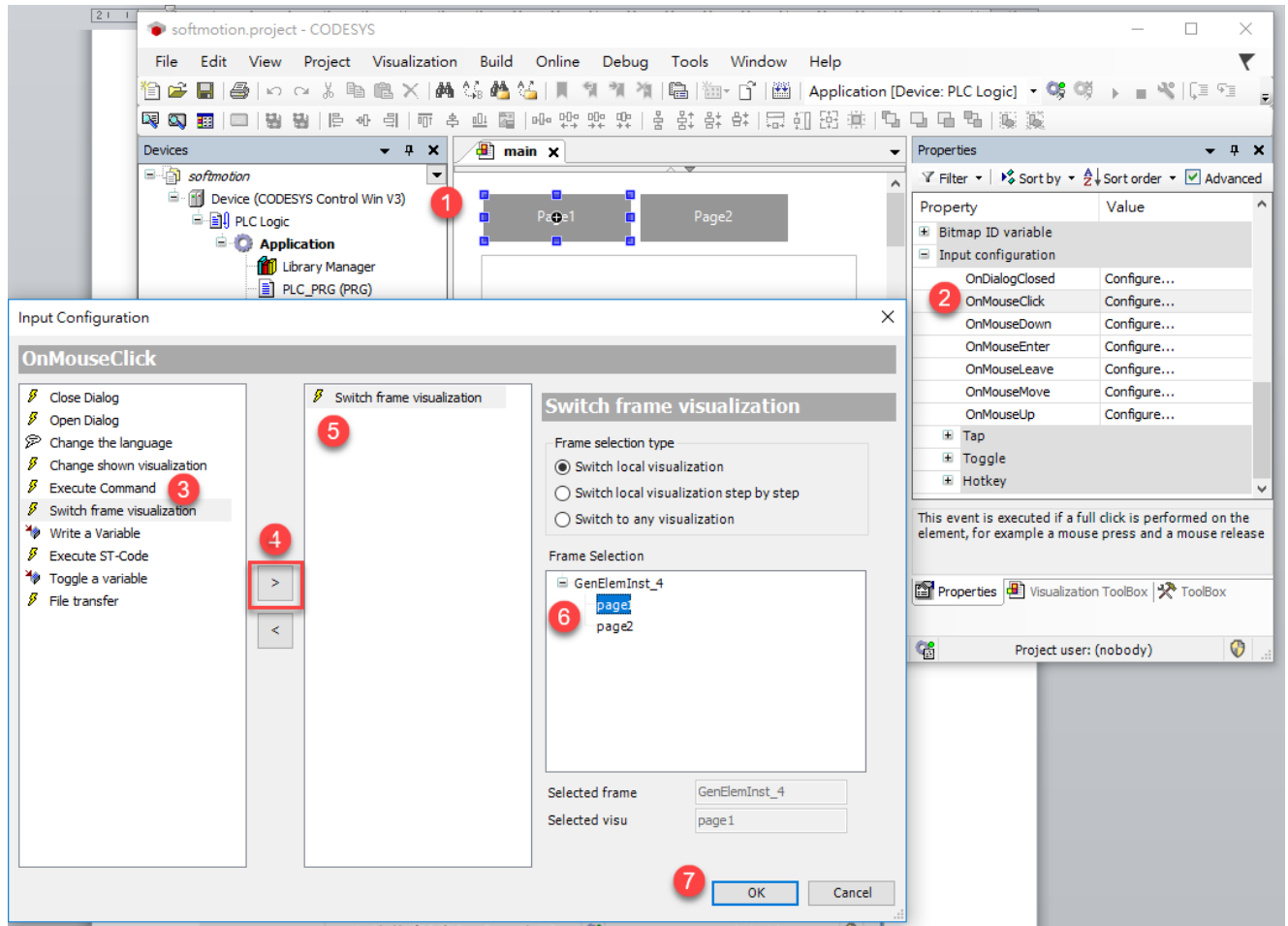
After adding visualization page, reference property should include them as the candidates.



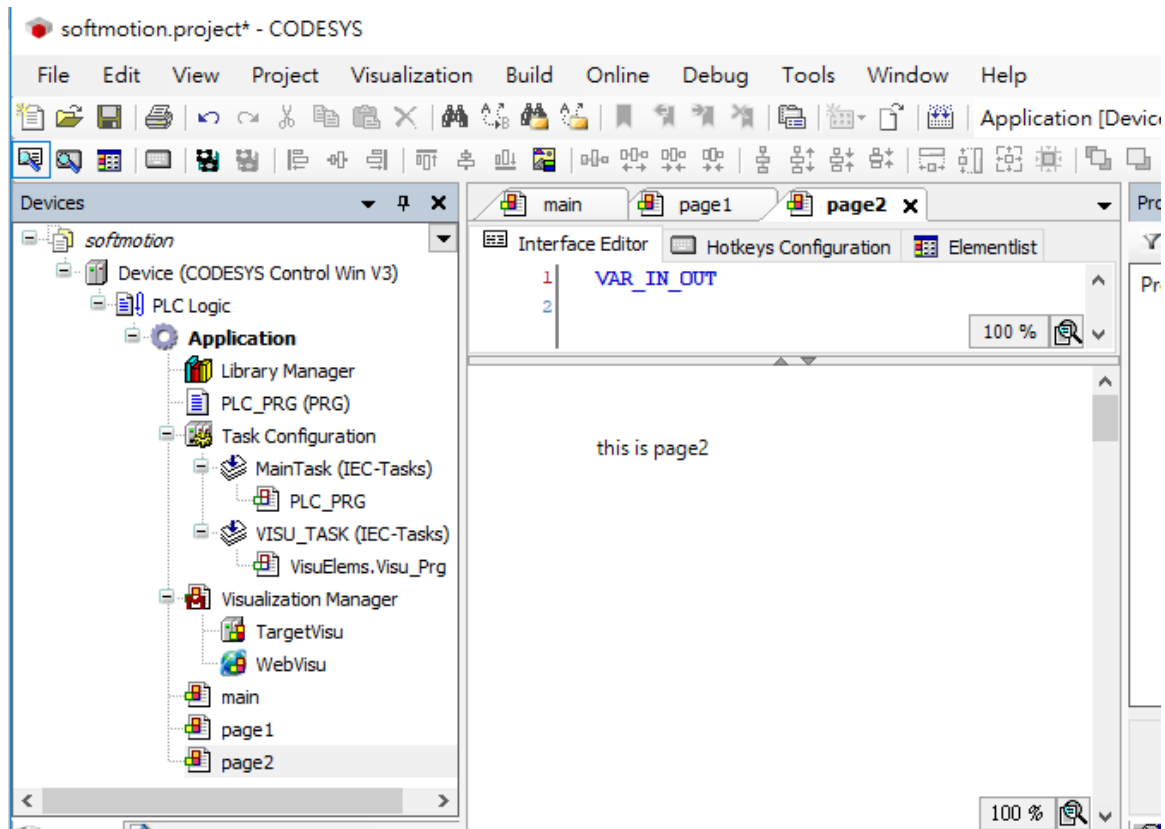
4. Add Two buttons



5. Add "OnClick" event. Choose "Switch frame visualization" and select the target page. (set page1 button and page2 button both)



6. Add indicator the page you are switch.



7. Then, download the project, and you could switch visualization page by buttons.



this is page2

■ **Reference:**

[https://help.codesys.com/webapp/ visu display visualizations in a visualization;product=core visualization;version=3.5.15.0](https://help.codesys.com/webapp/visu_display_visualizations_in_a_visualization;product=core_visualization;version=3.5.15.0)