

Advantech AE Technical Share Document

Date	2020 / 1 / 8	Release Note	<input type="checkbox"/> Internal <input checked="" type="checkbox"/> External
Category	<input type="checkbox"/> FAQ <input checked="" type="checkbox"/> SOP	Related OS	Windows CE 6.0
Abstract	FAQ_Introduction for WinCE 6.0 Installation		
Keyword	Win CE 6.0 / WOP		
Related Product	WOP-3070 / WOP-3100 / WOP-3120		

■ Brief Solution:

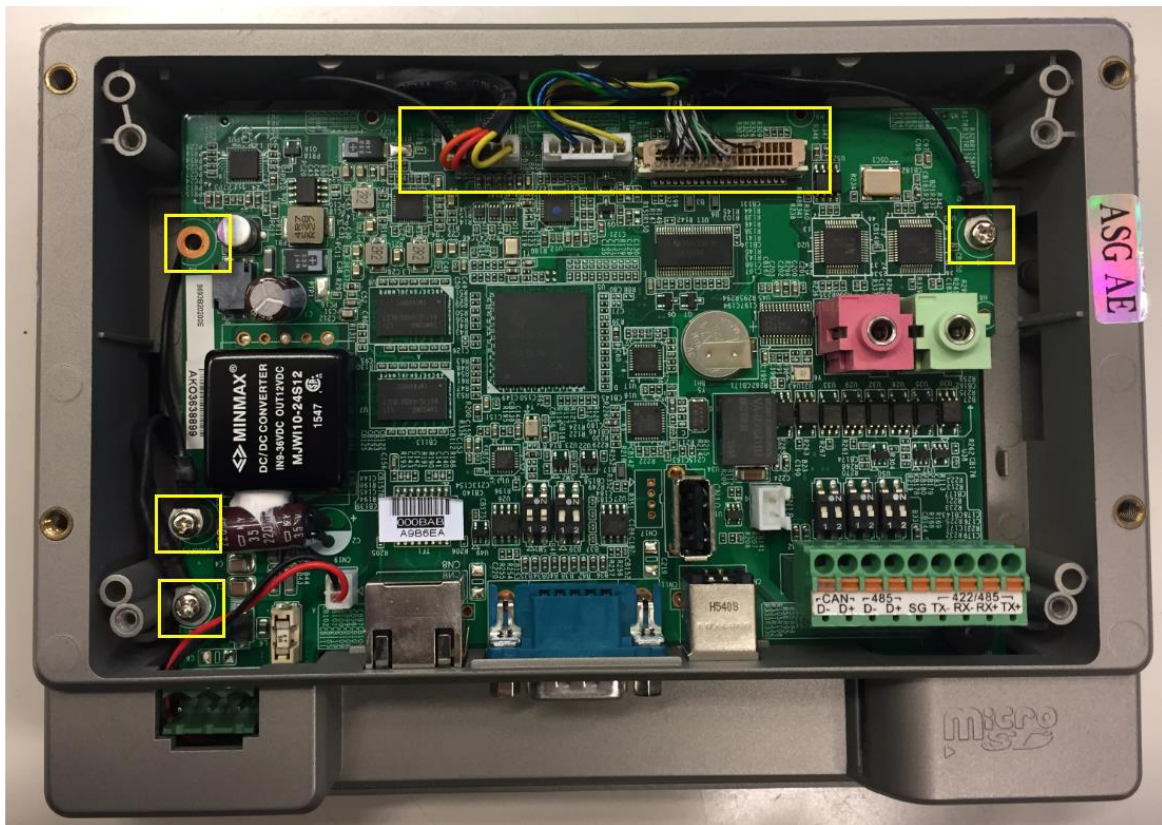
Step 1. Remove the storage of WOP-3070

WOP series is a RISC system which is not allowed to install OS under BIOS, it has to copy image and Bootup file into storage directly.

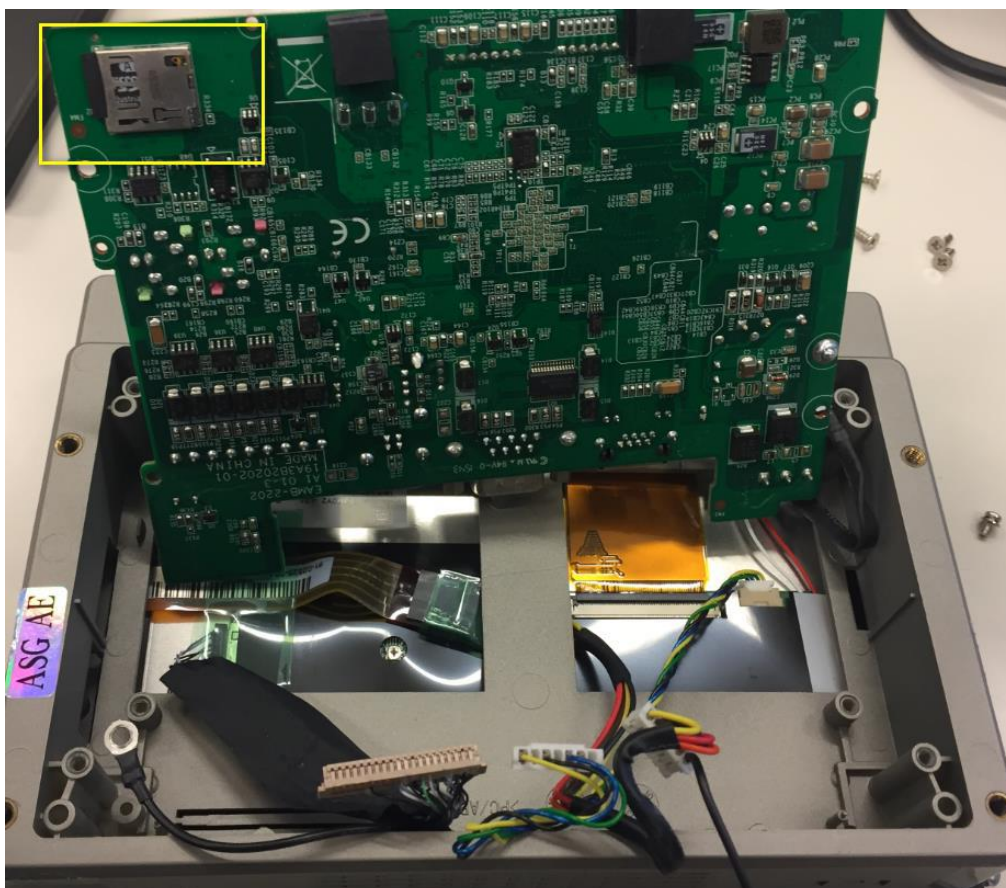
Untighten the screws of rear cover.



Remove the main board of WOP-3070

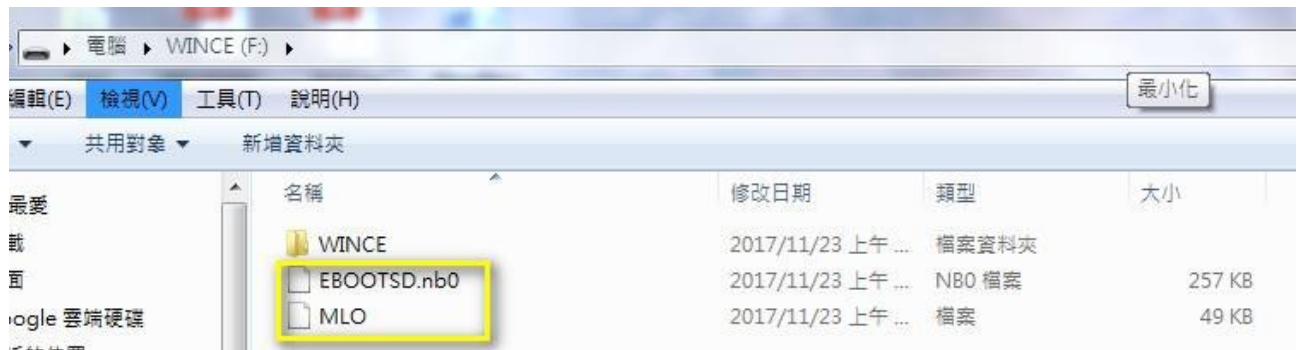


Take the micro SD card off on the rear of mainboard

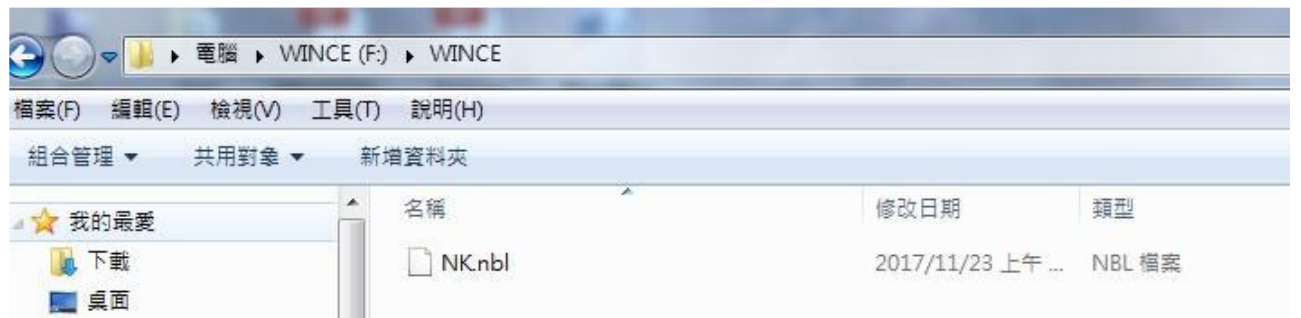


Step 2. Input image and boot up file

1. To prepare another PC and microSD card converter to input necessary file
2. Format the storage before installation w/ storage name "WINCE"
3. Input those three file you download before in the root of storage.
 - a. there are one document and two files in the root.



- b. check the NK.nbl file is in the WINCE document.



4. Install the microSD and assembly cables and mainboard then power on.