

Advantech AE Technical Sharing Document

Date	2020/ 9/ 24	Release Note	<input type="checkbox"/> Internal <input checked="" type="checkbox"/> External
Category	<input checked="" type="checkbox"/> FAQ <input type="checkbox"/> SOP	Related OS	Win10
Abstract	Settings before performing “Wake on LAN” function in Win10.		
Keyword	Win10, Wake on LAN.		
Related Product	All ASG products support Win10.		

■ Purpose Description:

This document aims to provide instructions to set Wake on LAN function correctly in Win10. Both for Intel and Realtek LAN chips.

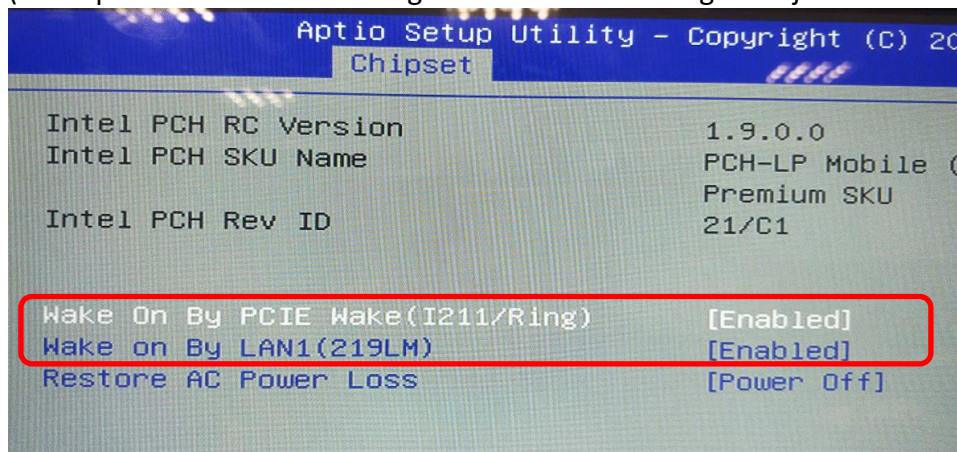
The steps are listed. Please follow the sequence A ,B ,C to perform the settings.

■ Analysis and Solution :

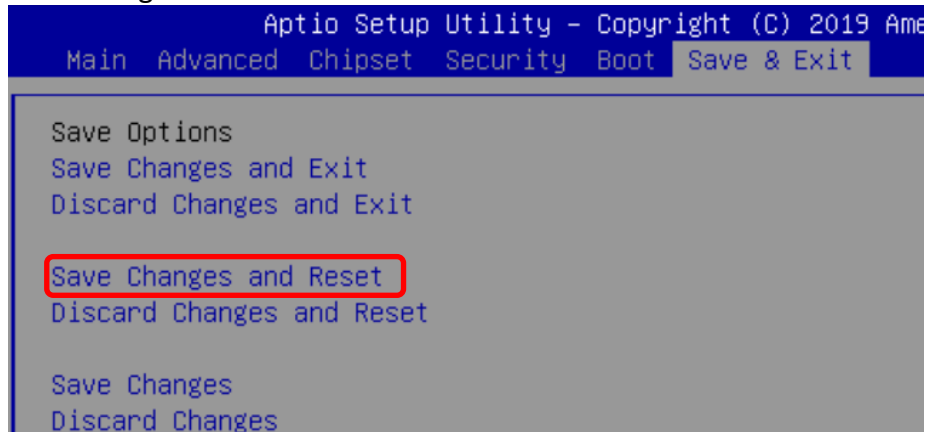
A. Setting in BIOS.

1. Enable wake up functions in BIOS :

(description for each model might be different. The figure is just for reference.)

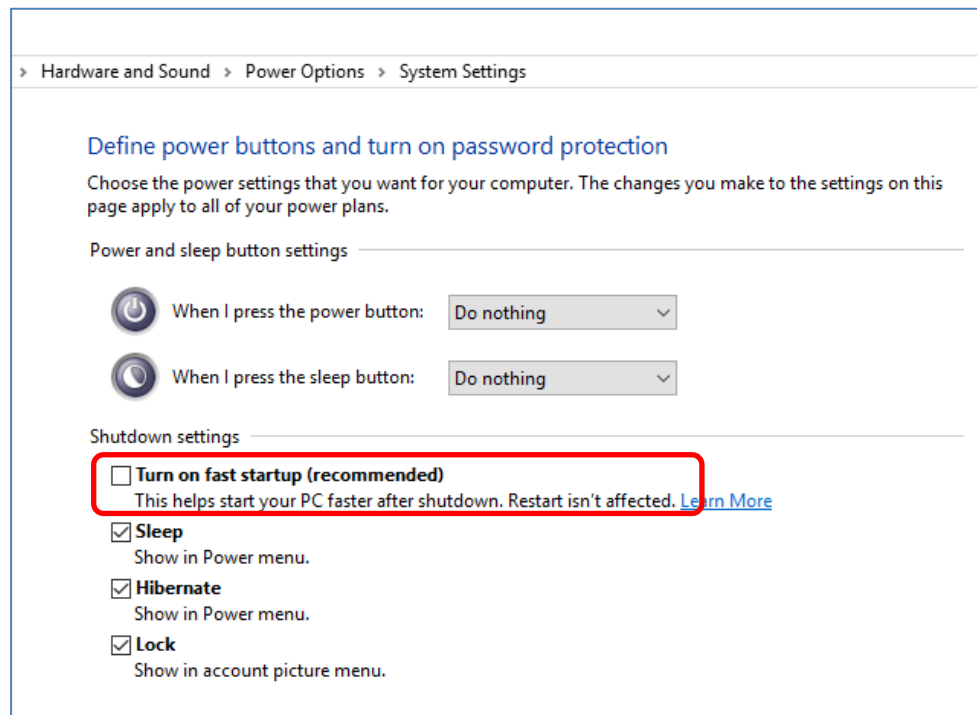


2. Save changes and reset.



B. Settings in Win10.

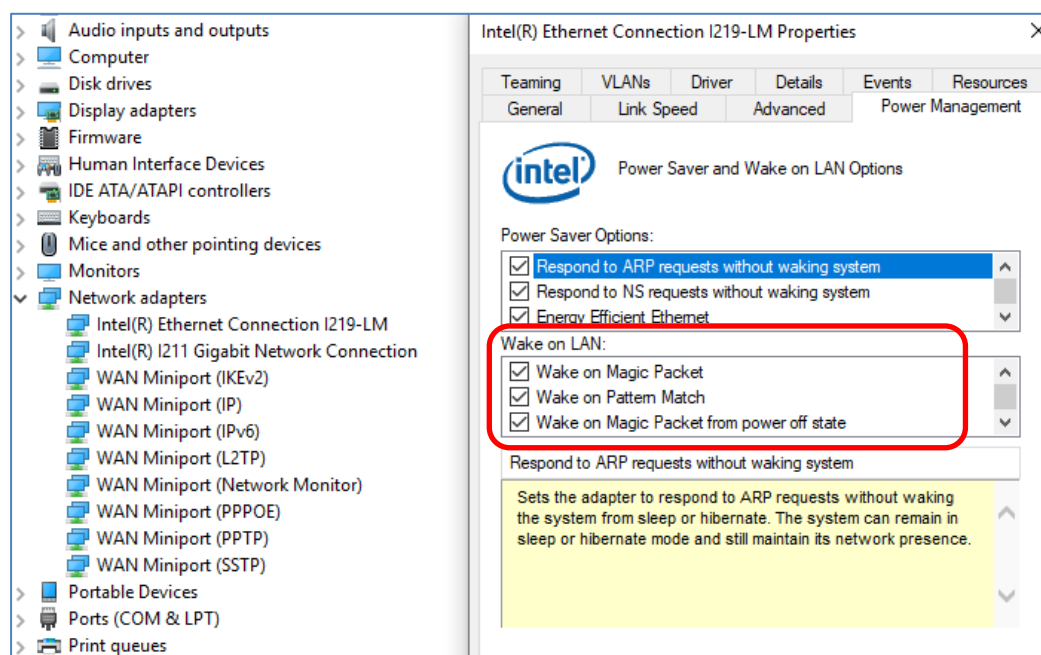
1. Unclick the function of “fast startup” :



C. Settings for Intel LAN / Realtek LAN in Win10.

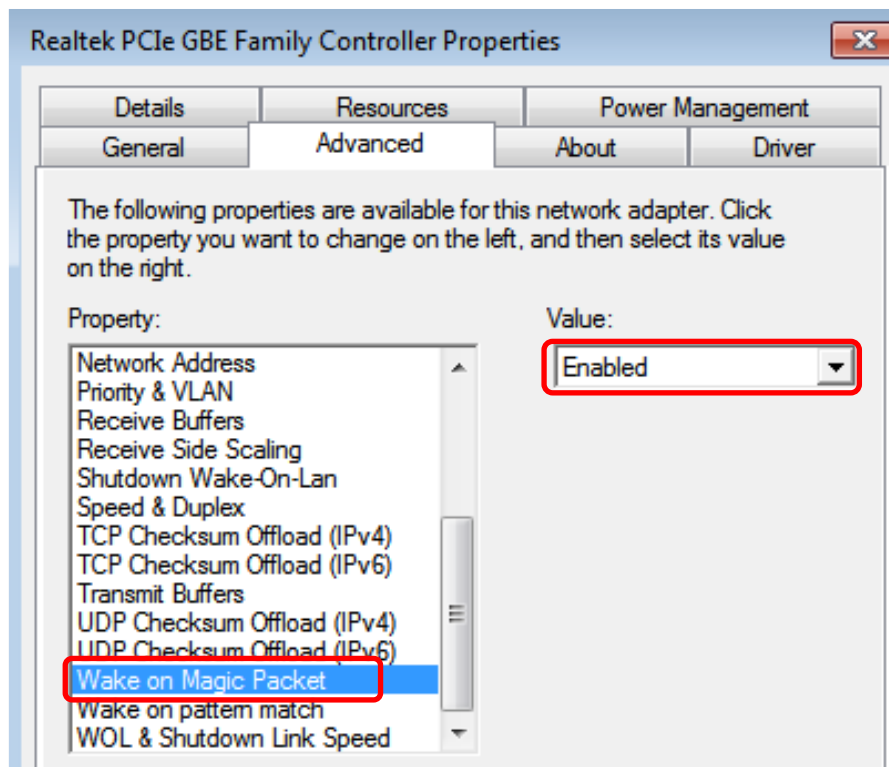
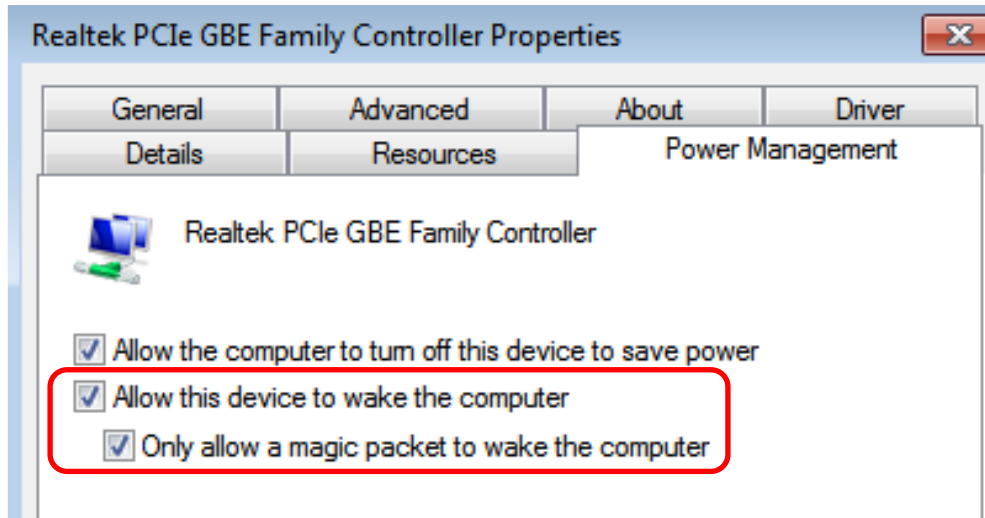
Intel LAN

Click all “wake on LAN” options in setting page of each LAN.



Realtek LAN

Click all “wake on LAN” options in setting page of each LAN.



“Wake on LAN” function only works after PC being sleep/shutdown from OS. (i.e. it is only supported at CPU S-states) It doesn’t support to be waked while PC is just being plugged with power.

■ **Contact Window:**

Please contact your local support team for further assistance.