

Advantech AE Technical Share Document

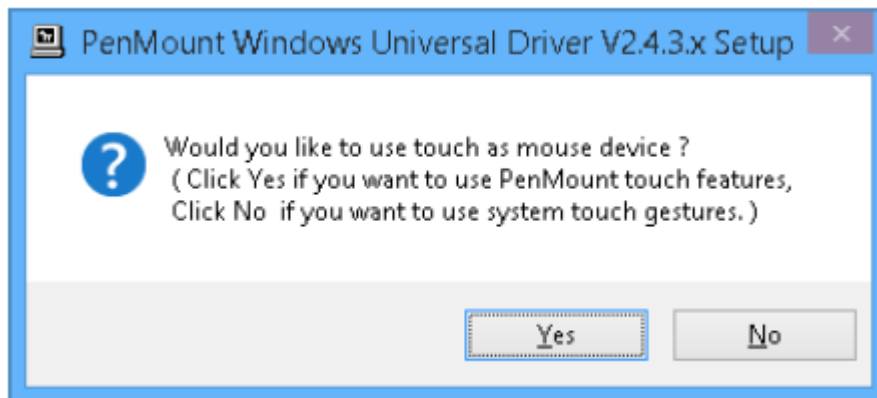
| | | | |
|------------------------|--|---------------------|--|
| Date | 2020 / 09 / 28 | Release Note | <input type="checkbox"/> Internal <input checked="" type="checkbox"/> External |
| Category | <input checked="" type="checkbox"/> FAQ <input type="checkbox"/> SOP | Related OS | Windows 7/8/10 |
| Abstract | What is the difference between PenMount's Mouse Device and Digitizer Device? | | |
| Keyword | PenMount, touch, touch screen, Mouse Device, Digitizer Device | | |
| Related Product | All panels with PenMount controller installed | | |

■ **Brief Solution:**

The PenMount device driver supports two types of device type configurations: mouse and digitizer. The mouse device type is compatible to all Windows operating systems while the digitizer device only works on systems that support Tablet PC Input.

Starting from PenMount Universal Driver V2.4, the setup program will allow users to choose to install the device as a "Mouse Device" or "Digitizer Device" on systems that support Digitizers. A message box will pop up as following:

Please select "**YES**" for installing PenMount as mouse device; select "**NO**" for digitizer device.



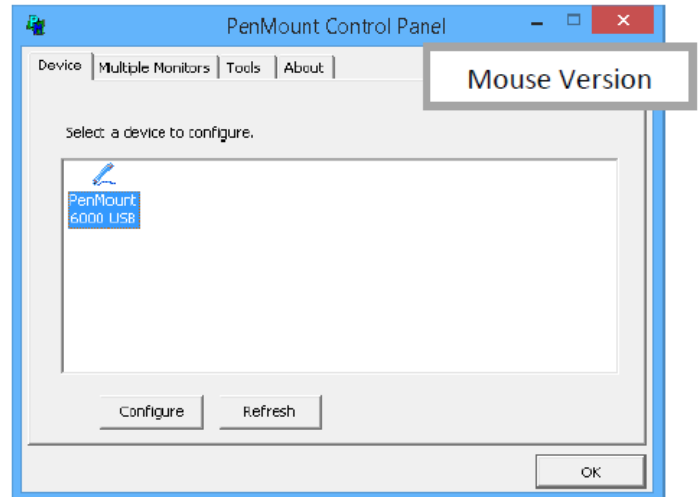
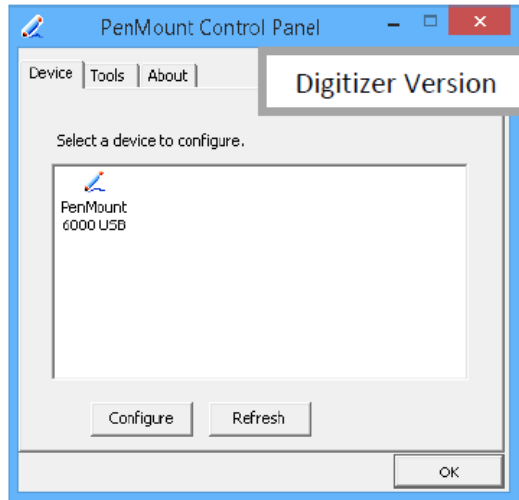
In general, installing the PenMount controller as a mouse device is recommended. If you wish to use the Tablet PC Input features in Windows 7 / 8 / 10, you may need to choose to install the PenMount device as a digitizer.

| Device Type | Mouse Device | Digitizer Device |
|-----------------------------------|---|---|
| Supported Operating System | Windows 2000/XP/Vista/7/8/10 | Windows XPT/ Vista/7/8/10 |
| PenMount Control Panel | Launch in PenMount Monitor Menu | Launch with desktop icon |
| Calibration | Supported PenMount 4/9/16/25 calibration | |
| Multiple Monitor | Supported (Use PenMount monitor mapping) | Supported (Configured in Tablet PC Settings) |
| Flicks (Windows 7) | Not supported | Supported |
| Right Button | Supported (Use PenMount Press and Hold / Right Click utility) | Supported (Use system Press and Hold gesture) |
| Edge Compensation | Supported | |
| Touch Beep Sound | Supported | |
| Operating Modes | Supported | Not Supported |

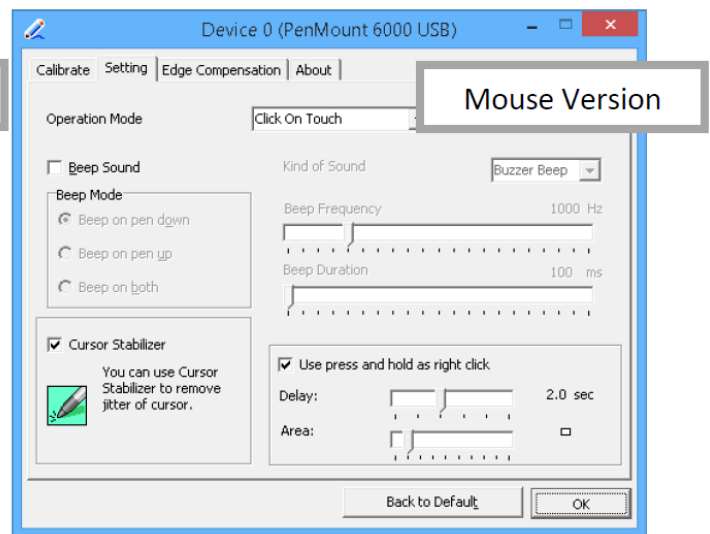
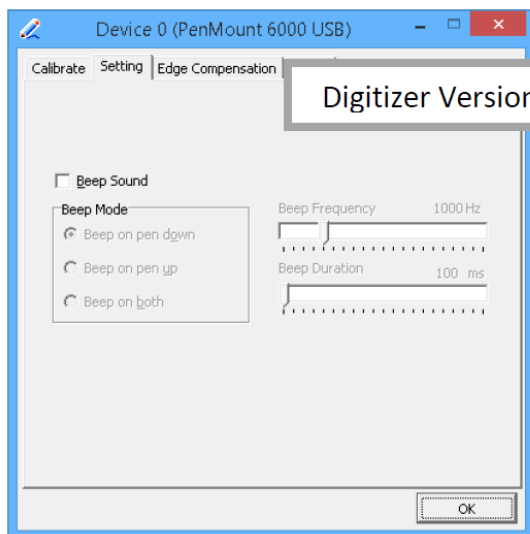
| Operation Mode | Description |
|----------------------------|---|
| Pen Input Emulation | Select this mode and mouse will emulate Windows Vista pen input device operation, by which no mouse event will be sent until the touch is dragged out of range or released from the screen. |
| Mouse Emulation | Select this mode and mouse functions as normal and allows dragging of icons. |
| Click on Touch | Select this mode and mouse only provides a click function, and dragging is disabled. |
| Click on Release | Select this mode and mouse only provides a click function when the touch is released. |

There are several differences between the mouse version and the digitizer version of the PenMount Control Panel.

For digitizer devices, please check the “Tablet PC Settings” in the system Control Panel for mapping monitors.



Take the PenMount 6000 for example, the device configuration window will appear after clicking on the “PenMount 6000 USB” or “PenMount 6000 RS232” icon in the PenMount Control Panel.



Supported operating system

The PenMount Windows Universal Driver supports the following Windows operating systems. The PenMount device driver can be installed as a digitizer on systems that provides Tablet PC support.

| | Operating System | Tablet PC Support | Multi-Touch Support |
|------------------|--|-------------------|---------------------|
| Windows Desktop | Windows 2000 | --- | --- |
| | Windows XP | --- | --- |
| | Windows XP Tablet PC Edition 2005 | Yes | --- |
| | Windows Vista | Yes | --- |
| | Windows 7 | Yes | Yes |
| | Windows 8 / 8.1 | Yes ₁ | Yes |
| | Windows 10 | Yes | Yes |
| Windows Server | Windows Server 2003 / 2003 R2 | --- | --- |
| | Windows Server 2008 / 2008 R2 | Yes ₂ | --- |
| | Windows Server 2012 / 2012 R2 | Yes | Yes |
| | Windows Server 2016 | Yes | Yes |
| Windows Embedded | Windows XP Embedded | --- | --- |
| | Windows Embedded Standard / POSReady 2009 | --- | --- |
| | Windows Embedded Standard / POSReady 7 | Yes ₃ | Yes ₄ |
| | Windows 8 / 8.1 Embedded Standard / Industry | Yes | Yes |
| | Windows 10 IoT Enterprise | Yes | Yes |

1 For Windows 8 / 8.1 with OEM Licenses, need to update [KB3095649](#) for multi-touch support.

2 Must manually install tablet pc service from control panel.

3 Only WES7P SKU provides Tablet PC support.

4 Only WES7P SKU provides Tablet PC support.