

Advantech AE Technical Share Document

Date	2021 / 09 / 6	Related Product	MCM 2.0.4.0, MCM 2.1.2.0, MCM 2.1.3.0,	
Category	■FAQ □ SOP		MCM 2.2.0.0, MCM 2.1.4.0, MCM 2.1.5.0	
Abstract	IAG_FAQ_DAQNavi_SOP_MCM Register Offline			
Keyword	MCM, Register Offline			
SR#	1-4638432154			
Revision History				
Date	Version	Author	Reviewer	Description
2021/09/6	1.0	Peiche.Tsou	Owen.Chang	OS:Windows

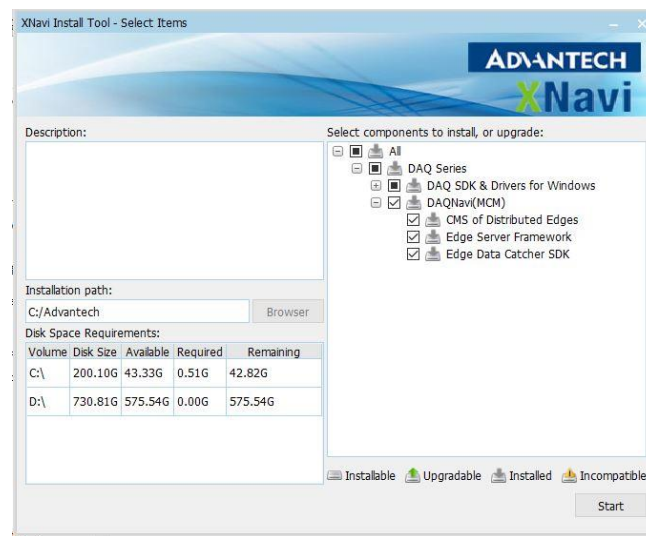
■ Problem Description & Architecture:

Sometimes user can't connect the internet. So how can they register MCM without internet?
This FAQ will show you how to register MCM offline.

■ Brief Solution - Step by Step:

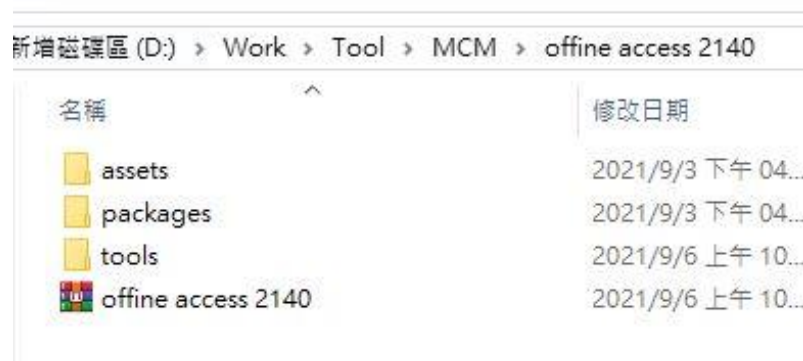
1. Install MCM:

Download Website: <https://www.advantech.tw/support/details/utility?id=1-1CXBY3>



2. Unzip the offline installation package:

The installation package can take from support AE.



3. Stop MCM and Navigator Service:

- (1) Open Command Prompt(cmd.exe) with administrator rights.
- (2) Execute: sc stop "MCM King Service"

```

Administrator: 命令提示字元
C:\Windows\system32>sc stop "MCM King Service"

SERVICE_NAME: MCM King Service
        TYPE               : 110  WIN32_OWN_PROCESS (interactive)
        STATE                : 3    STOP_PENDING
                               (STOPPABLE, NOT_PAUSABLE, ACCEPTS_SHUTDOWN)
        WIN32_EXIT_CODE       : 0    (0x0)
        SERVICE_EXIT_CODE    : 0    (0x0)
        CHECKPOINT           : 0x0
        WAIT_HINT            : 0x0
  
```

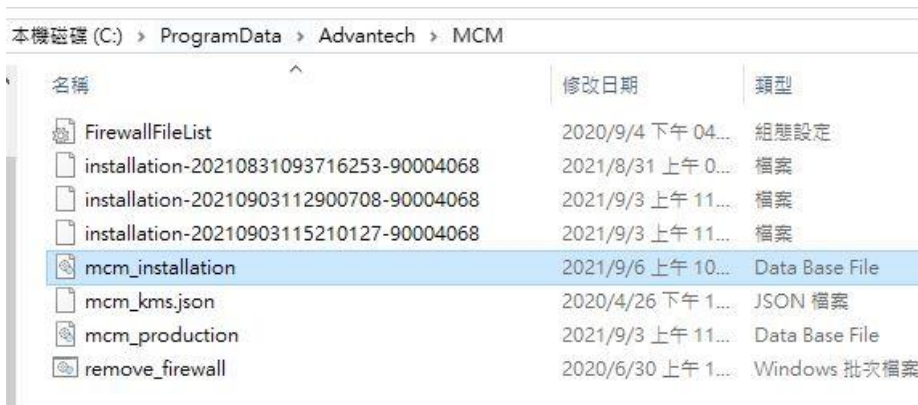
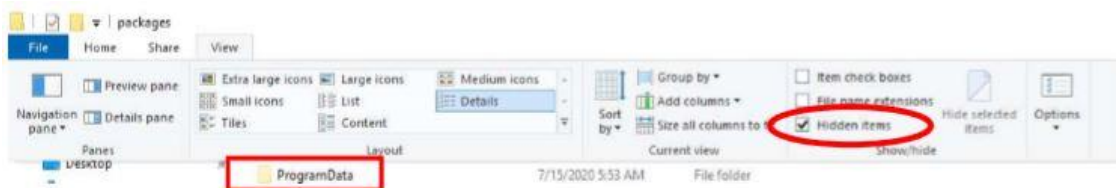
- (3) Go to "Task Manager" -> Service -> Find "Navigator Service Manager" and shut down.



4. Rebuild mcm_installation.db file:

- (1) Go to %ProgramData%\Advantech\MCM and delete mcm_installatin.db

Note: ProgramData may be a hidden folder.



- (2) Execute: C:\Advantech\MCM\Utilities\regmcm.exe --PID=P007 with administrator rights in cmd.exe.
- (3) Confirm that the above procedure returns "installed" message.

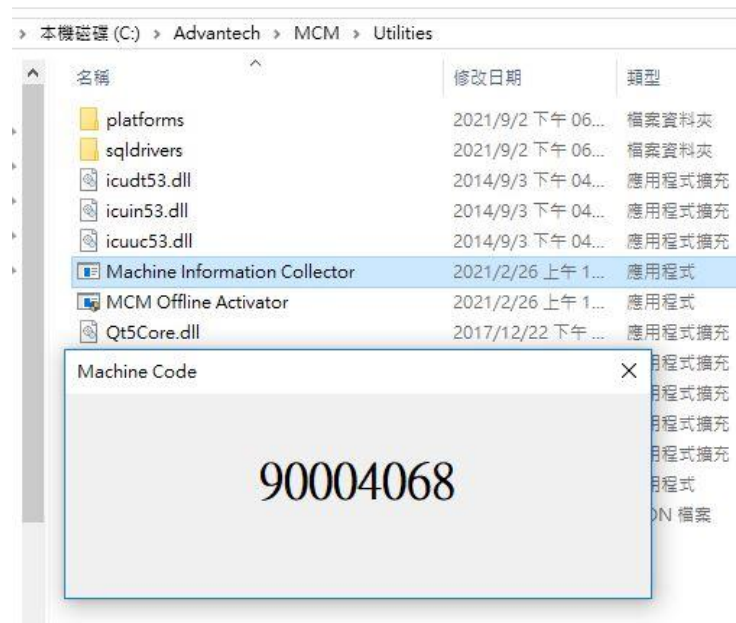
```

C:\Windows\system32>C:\Advantech\MCM\Utilities\regmcm.exe --PID=P007
Missing object "mcm_production_db" in configuration "C:/Advantech/MCM/Utilities/regmcm.json"
Missing object "mcm_installation_db" in configuration "C:/Advantech/MCM/Utilities/regmcm.json"
Missing object "mcm_installation_db_version" in configuration "C:/Advantech/MCM/Utilities/regmcm.json"
P007 - [000000-000000-000000-000000] installed
    
```

- (4) Confirm that mcm_installatin.db file is regenerated under the %ProgramData%\Advantech\MCM.

5. Build .oac file:

- (1) Use C:\Advantech\MCM\Utilities\Machine Information Collector to get machine code.



- (2) Use MCM Activation Assistant tool which is in offline installation package to build a .oac file with the machine code as figure1 shown below. Delete the .oac file on the directory before executing MCM Activation Assistant tool.

After execution, confirm the activation is successful and generate a new .oac file as figure 2.3 shown below.

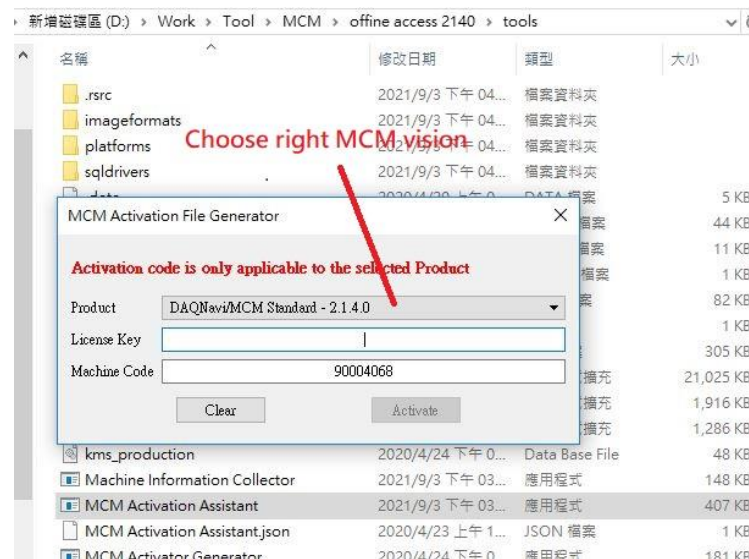


Figure.1

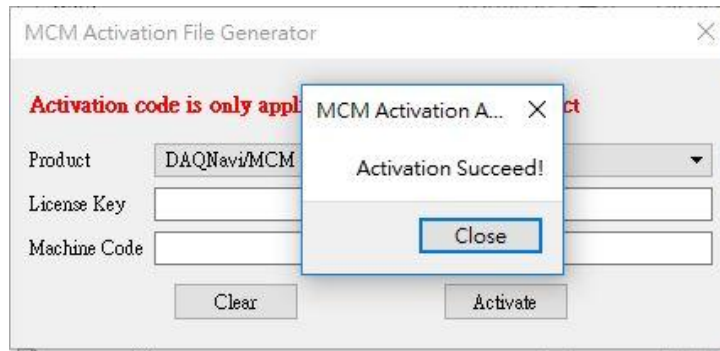


Figure. 2

.reloc	2020/4/20 上午 0...	RELOC 檔案	11 KB
.rsrc_1	2020/4/20 上午 0...	RSRC_1 檔案	1 KB
.text	2020/4/20 上午 0...	TEXT 檔案	82 KB
90004068.oac	2021/9/6 上午 11...	OAC 檔案	1 KB
20210906102440 - 90004068	2021/9/6 上午 10...	檔案	1 KB
Default.SFX	2020/3/26 下午 0...	SFX 檔案	305 KB
icudt53.dll	2014/9/3 下午 04...	應用程式擴充	21,025 KB

Figure.3

6. Offline Activation:

- (1) Start MCM Service by execute: `sc start "MCM King Service"` with administrator rights in cmd.exe.

```

C:\Windows\system32>sc start "MCM King Service"

SERVICE_NAME: MCM King Service
        TYPE               : 110  WIN32_OWN_PROCESS (interactive)
        STATE                : 2    START_PENDING
                                (NOT_STOPPABLE, NOT_PAUSABLE, IGNORES_SHUTDOWN)
        WIN32_EXIT_CODE       : 0    (0x0)
        SERVICE_EXIT_CODE    : 0    (0x0)
        CHECKPOINT           : 0x0
        WAIT_HINT            : 0x7d0
        PID                 : 10876
        FLAGS                 :
    
```

- (2) Start Navigator Service Manager in Task Manager
- (3) Use C:\Advantech\MCM\Utilities\MCM Offline Activator tool with the generated .oac file to do offline activation.

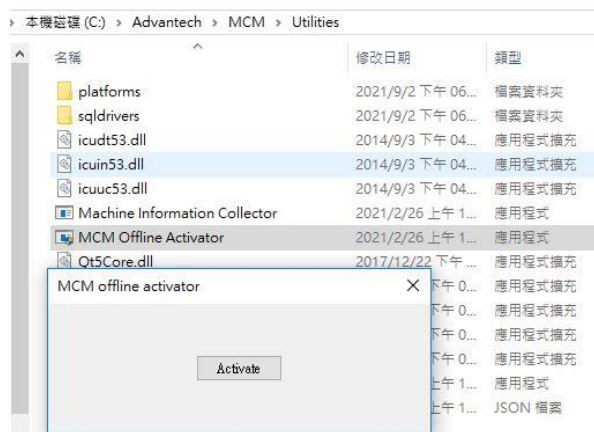


Figure. 1

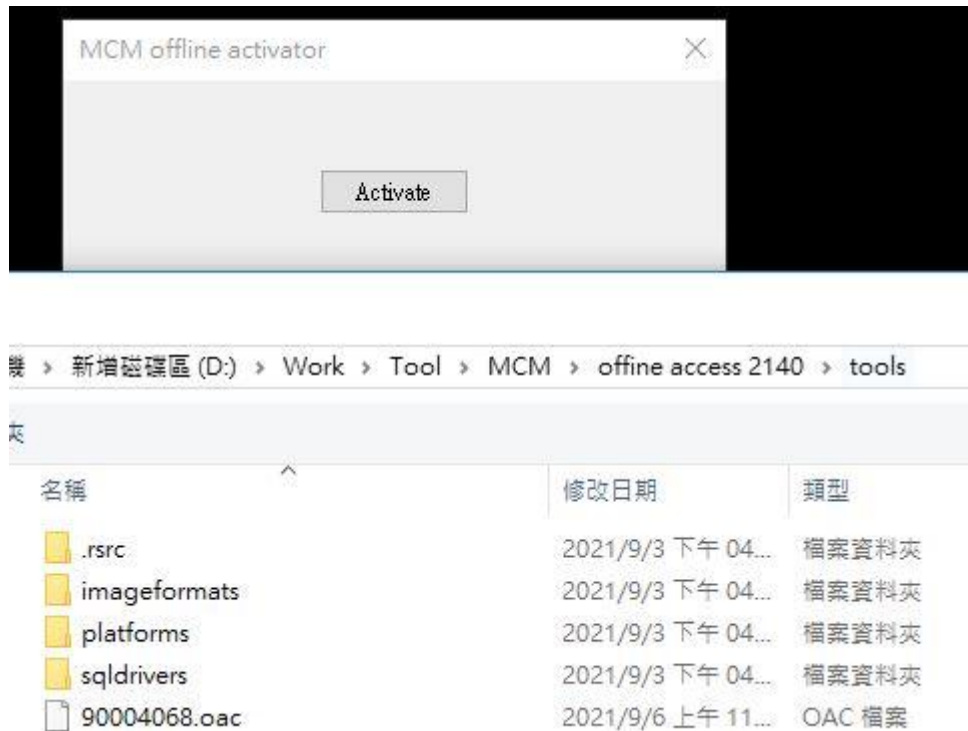


Figure. 2

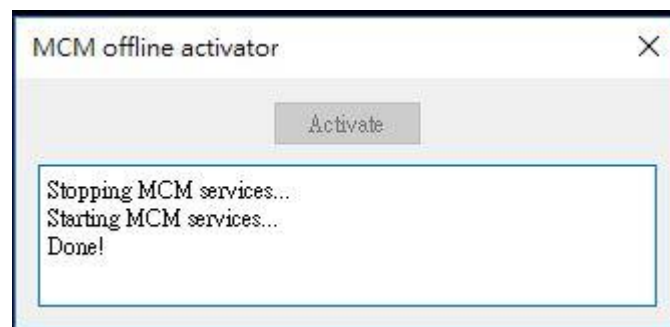


Figure. 3

(4) Open MCM View to check the registration.



■ **Reference:**

N/A