

WebAccess/CNC



R-J3iB/R-30iA/R-30iB

STEP 0: Confirm the version after WebAccess/CNC

V2.0.12 has been installed

The FANUC Robot TCP/IP connection setting options will appear when the CNC Explorer driver is set as follows

Device Selection :

FANUC Robot

FANUC Robot Setting

Device Name

FROBOT01

IP

192.168.0.1

Table1 Refresh (Ms)

1000

Table2 Refresh (Ms)

5000

IO Refresh (Ms)

1000

Add

Search List

<input type="checkbox"/>	Device Name	IP	Table1 Refre...	Table2 Refre...	IO Refresh (...)
<input type="checkbox"/>	FROBOT01	192.168.0.1	1000	5000	1000

<<

<

1

>

>>

Showing 1 to 1 of 1 entries

Delete

< Previous

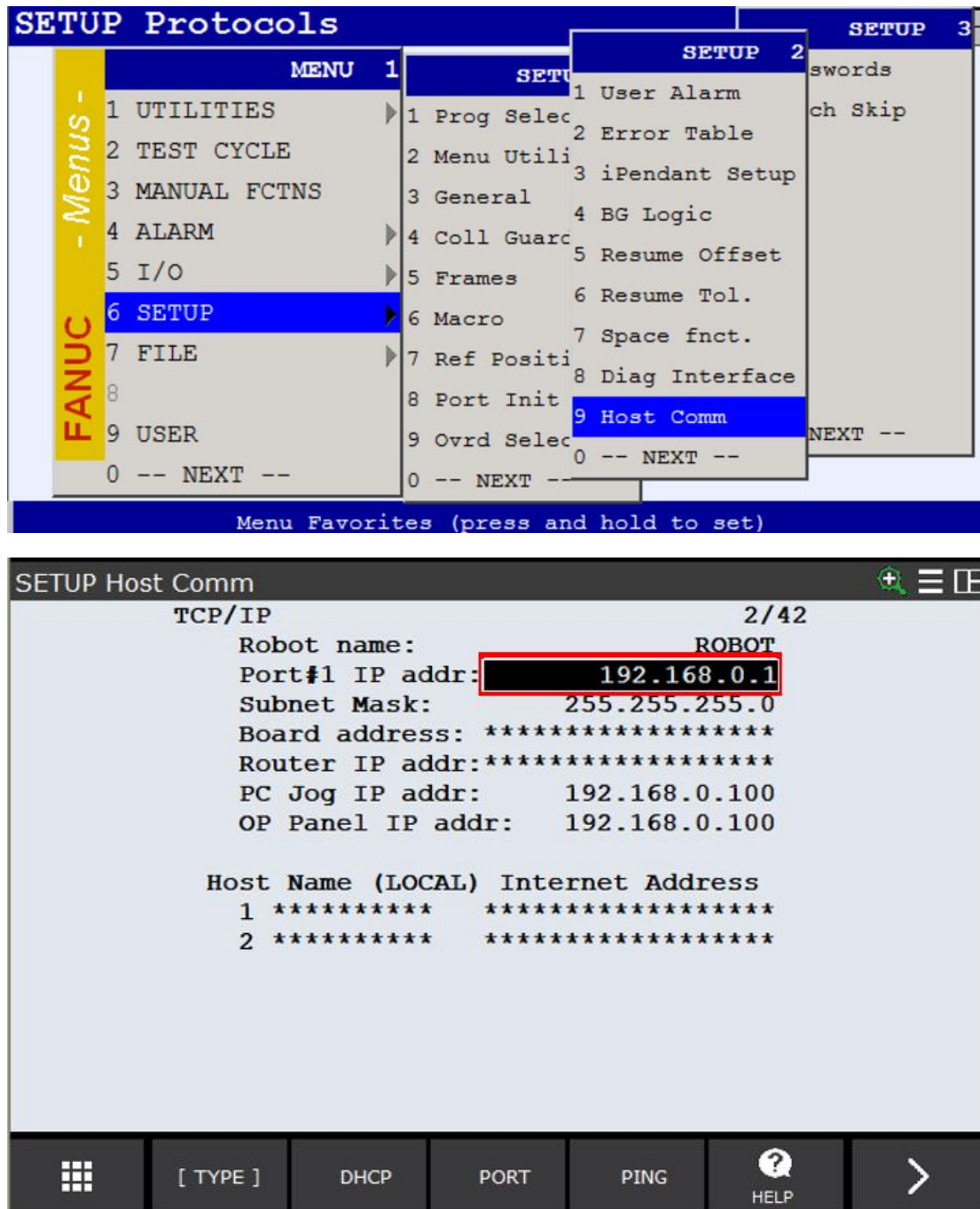
Next >

The user can set the IP address of the Robot, and can set the preset Table1, Table2 and I/O sampling period (unit is ms, it is recommended to be greater than 200ms) according to the required collection requirements.

STEP 1: Ethernet IP Setting

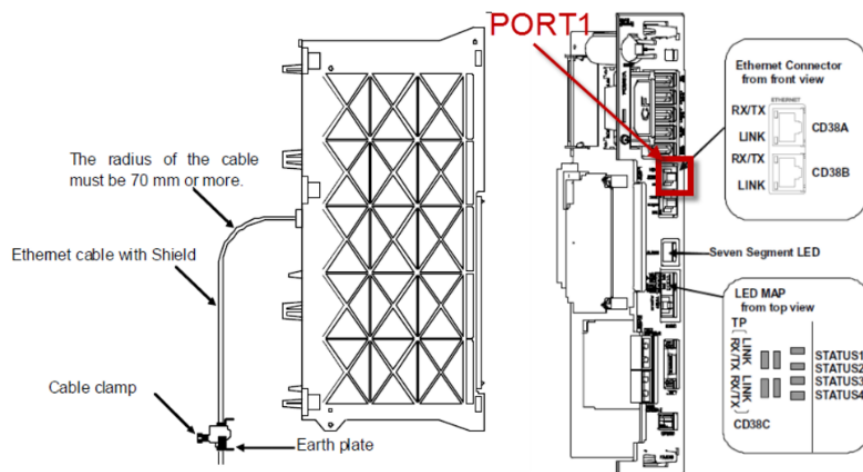
- /SETUP/Host Comm

Set the required parameters for networking, IP address and subnet mask

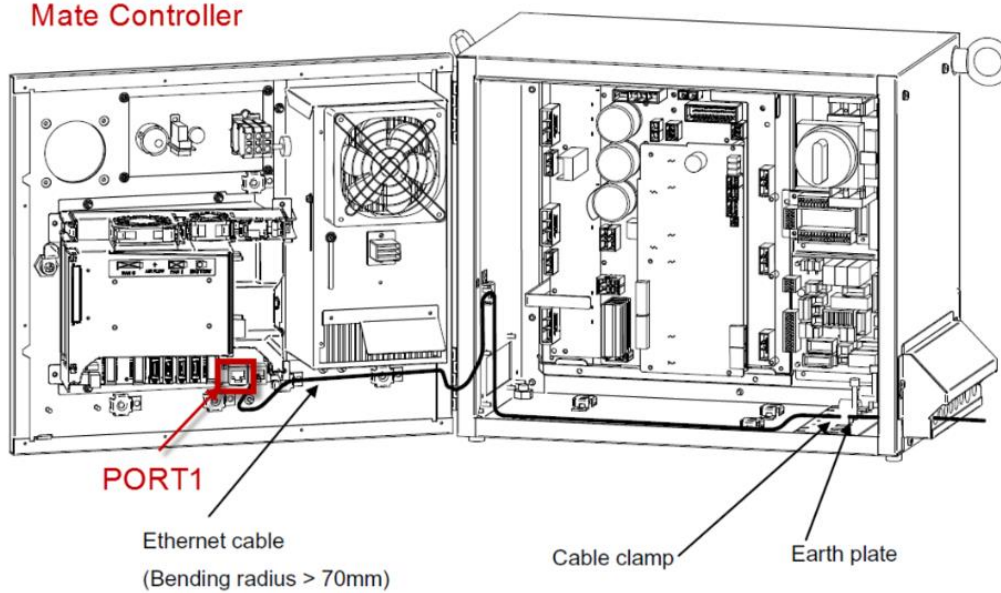


Please confirm whether the RJ45 network cable on the back of the controller is connected correctly

A-Cabinet



Mate Controller



STEP 2: Fanuc Robot Network Connection Test

- Use the Ping tool to test whether the connection to the Robot is normal

ping IP address

EX: ping 192.168.0.1

A screenshot of a Windows Command Prompt window. The title bar reads "命令提示字元" (Command Prompt). The window content shows the following text: "Microsoft Windows [版本 10.0.18363.1440]" (Microsoft Windows [Version 10.0.18363.1440]), "(c) 2019 Microsoft Corporation. 著作權所有，並保留一切權利。" (© 2019 Microsoft Corporation. All rights reserved.), and the command prompt "C:\Users\Neal.Chen>ping 192.168.0.1". The command has been entered but not yet executed, as no output is visible.

```
命令提示字元
Microsoft Windows [版本 10.0.18363.1440]
(c) 2019 Microsoft Corporation. 著作權所有，並保留一切權利。
C:\Users\Neal.Chen>ping 192.168.0.1
```

STEP 3: CNC Explorer Setting

Run CNC Explorer

CNC Driver select FANUC Robot setting

Device Selection :

FANUC Robot

FANUC Robot Setting

Device Name

FROBOT01

IP

192.168.0.1

Table1 Refresh (Ms)

1000

Table2 Refresh (Ms)

5000

IO Refresh (Ms)

1000

Add

Search List

<input type="checkbox"/>	Device Name	IP	Table1 Refre...	Table2 Refre...	IO Refresh (...)
<input type="checkbox"/>	FROBOT01	192.168.0.1	1000	5000	1000

<<

<

1

>

>>

Showing 1 to 1 of 1 entries

Delete

< Previous

Next >

The user can refer to the user manual of WebAccess CNC to add or delete tags to meet the actual needs.