

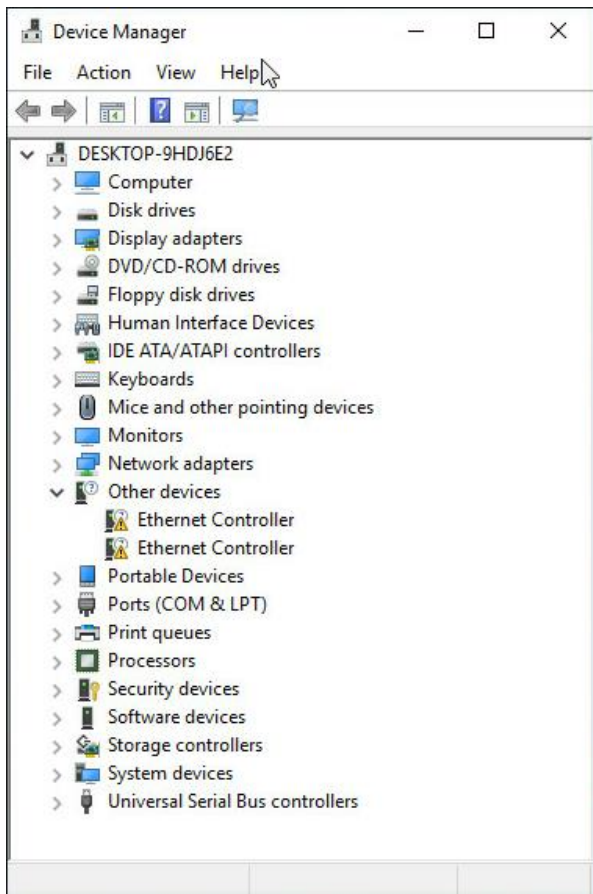
Advantech AE Technical Share Document

Date	2023 / 02 / 15	Release Note	<input type="checkbox"/> Internal <input checked="" type="checkbox"/> External
Category	<input type="checkbox"/> FAQ <input checked="" type="checkbox"/> SOP	Related OS	Win10
Abstract	How to Install X557-AT2 LAN Driver on ASMB-260 with Win10		
Keyword	X557-AT2, 10Gb, LAN Driver		
Related Product	ASMB-260I, ASMB-260T2		

This SOP is for user to install X557-AT2 LAN driver on ASMB-260I/ASMB-260T2 with Win10.

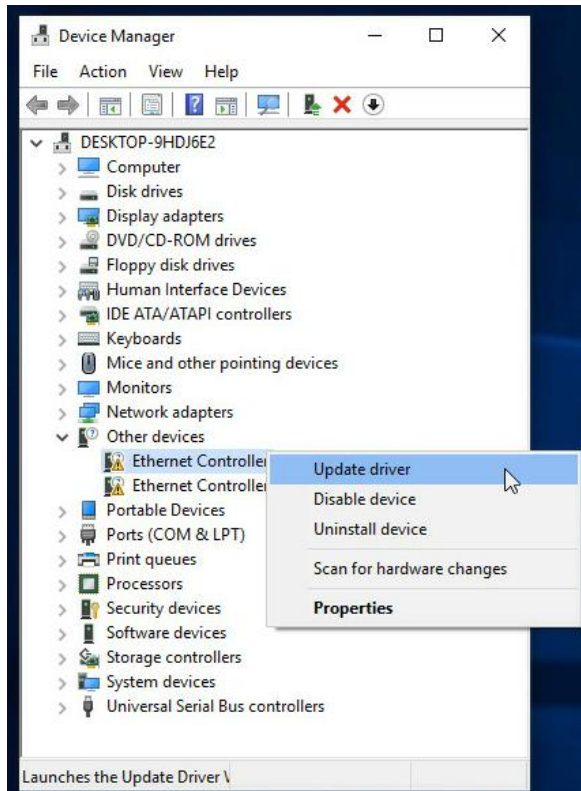
■ **Description**

After installing LAN driver from ASMB-260 product website (ASMB-260_LAN_Win8.1_10_Server_2012_2012R2_2016(64bit).zip), the X557-AT2 LAN(s) still show yellow exclamation mark in device manager.

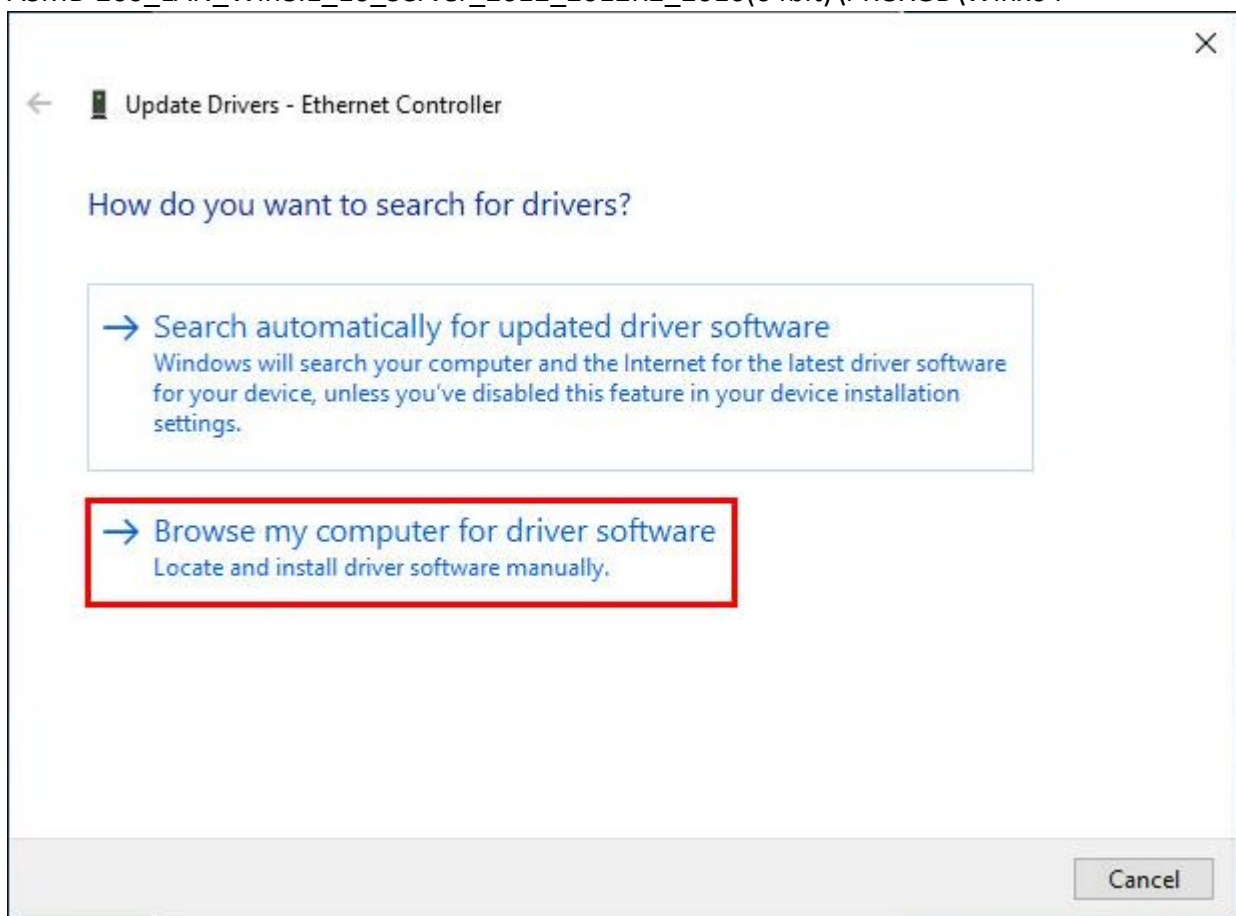


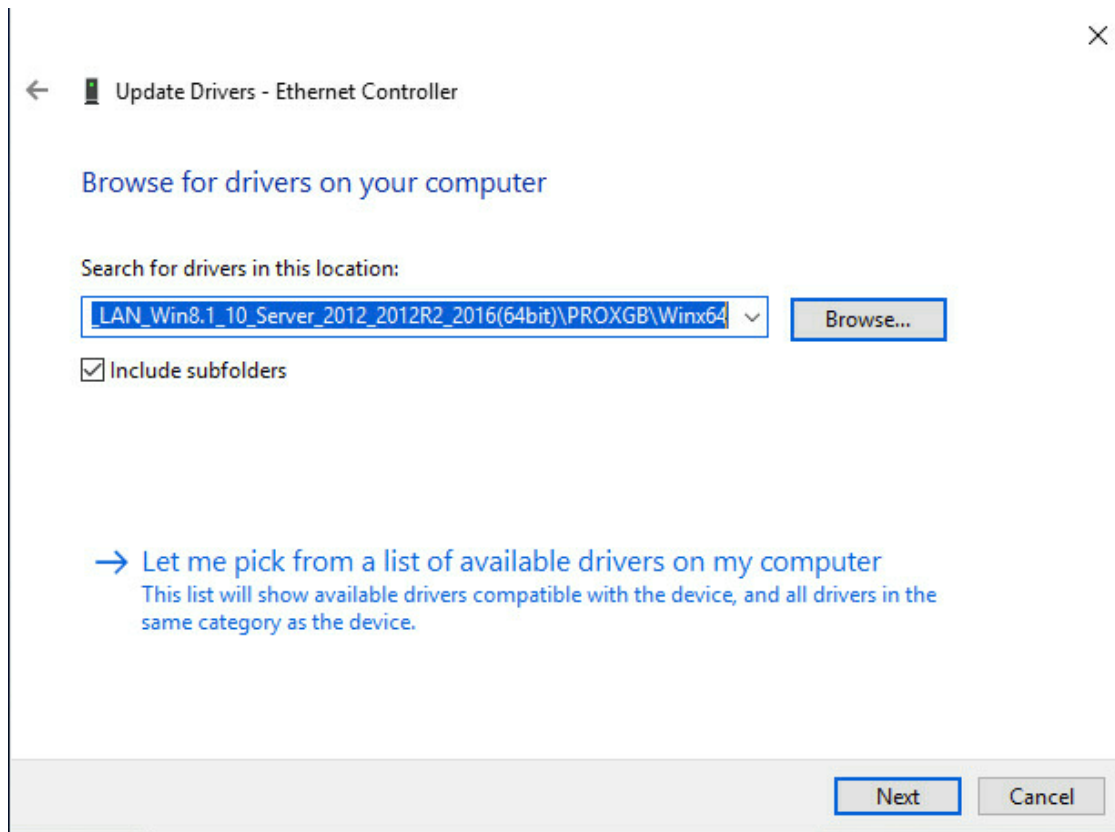
■ **Procedures to Install X557-AT2 Driver**

1. Right click the Ethernet Controller from device manager and select Update driver.

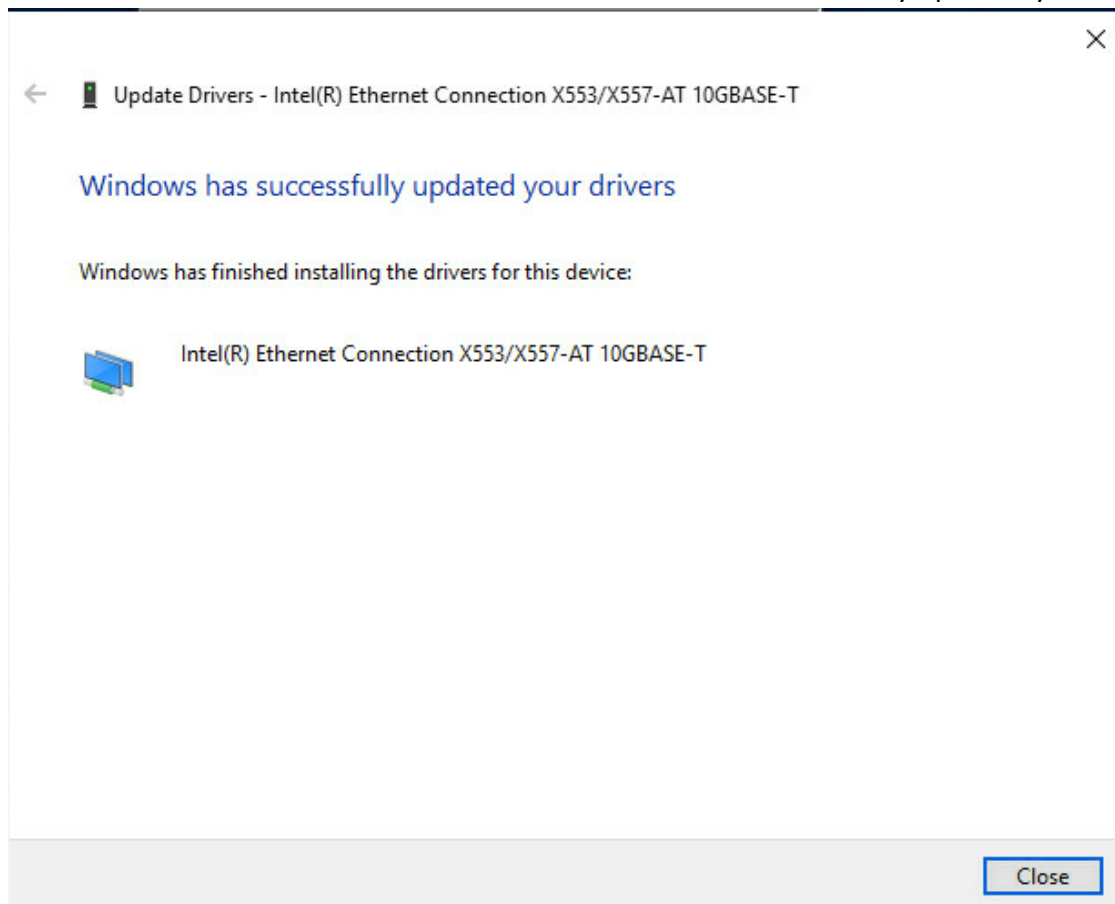


2. Select 'Browse my computer for driver software' and point to driver file location.
ASMB-260_LAN_Win8.1_10_Server_2012_2012R2_2016(64bit)\PROXGB\Winx64





3. Click Next to install driver. We can now see 'Windows has successfully updated your drivers'.



4. Repeat Step 1-3 for the second Ethernet Controller if you're using ASMB-260T2.