

User Manual

DSA-2130E

Trusted ePlatform Services

ADVANTECH

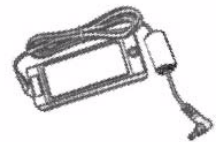
Copyright

The documentation and the software included with this product are copyrighted 2009 by Advantech Co., Ltd. All rights are reserved. Advantech Co., Ltd. reserves the right to make improvements in the products described in this manual at any time without notice. No part of this manual may be reproduced, copied, translated or transmitted in any form or by any means without the prior written permission of Advantech Co., Ltd. Information provided in this manual is intended to be accurate and reliable. However, Advantech Co., Ltd. assumes no responsibility for its use, nor for any infringements of the rights of third parties, which may result from its use.

Packing List

Before setting up the system, check that the items listed below are included and in good condition. If any item does not accord with the table, please contact your dealer immediately.

- DSA-2130E Media Player
- 12V DC output AC Power Adapter
- Quick start guide (not shown)
- Installation and Documentation Kit CD
- Audio Adapter: RCA male to 3.5 mm female (not shown)
- Audio Cable: 3.5 mm male to 3.5 mm male (not shown)
- Standard Ethernet cable (not shown)
- Mounting Bracket



Safety Instructions

1. Read these safety instructions carefully.
2. Keep this User Manual for later reference.
3. Disconnect this equipment from any AC outlet before cleaning. Use a damp cloth. Do not use liquid or spray detergents for cleaning.
4. For plug-in equipment, the power outlet socket must be located near the equipment and must be easily accessible.
5. Keep this equipment away from humidity.
6. Put this equipment on a reliable surface during installation. Dropping it or letting it fall may cause damage.
7. The openings on the enclosure are for air convection. Protect the equipment from overheating. **DO NOT COVER THE OPENINGS.**
8. Make sure the voltage of the power source is correct before connecting the equipment to the power outlet.
9. Position the power cord so that people cannot step on it. Do not place anything over the power cord.
10. All cautions and warnings on the equipment should be noted.
11. If the equipment is not used for a long time, disconnect it from the power source to avoid damage by transient overvoltage.
12. Never pour any liquid into an opening. This may cause fire or electrical shock.
13. Never open the equipment. For safety reasons, the equipment should be opened only by qualified service personnel.
14. If one of the following situations arises, get the equipment checked by service personnel:
 - The power cord or plug is damaged.
 - Liquid has penetrated into the equipment.
 - The equipment has been exposed to moisture.
 - The equipment does not work well, or you cannot get it to work according to the user's manual.
 - The equipment has been dropped and damaged.
 - The equipment has obvious signs of breakage.
15. **DO NOT LEAVE THIS EQUIPMENT IN AN ENVIRONMENT WHERE THE STORAGE TEMPERATURE MAY GO BELOW -20° C (-4° F) OR ABOVE 60° C (140° F). THIS COULD DAMAGE THE EQUIPMENT. THE EQUIPMENT SHOULD BE IN A CONTROLLED ENVIRONMENT.**
16. **CAUTION: DANGER OF EXPLOSION IF BATTERY IS INCORRECTLY REPLACED. REPLACE ONLY WITH THE SAME OR EQUIVALENT TYPE RECOMMENDED BY THE MANUFACTURER, DISCARD USED BATTERIES ACCORDING TO THE MANUFACTURER'S INSTRUCTIONS.**
17. The sound pressure level at the operator's position according to IEC 704-1:1982 is no more than 70 dB (A).

DISCLAIMER: This set of instructions is given according to IEC 704-1. Advantech disclaims all responsibility for the accuracy of any statements contained herein.

Contents

Chapter 1	Introduction.....	1
1.1	General Introduction.....	2
1.2	Features	2
1.3	Specifications	3
	Table 1.1: Specifications	3
1.4	Input/Output Interfaces.....	4
1.5	Mechanical Drawing.....	5
	Figure 1.1 Mechanical Drawing	5
Chapter 2	Preparations and Setting Up	7
2.1	Connecting the Power.....	8
2.2	Connecting to a Display	8
2.3	Installation of DSA Composer and DSA Configurator	9
2.4	Reset to Default Configuration	10
Chapter 3	DSA Composer Utility	11
3.1	Feature-set of DSA Composer.....	12
3.2	Media Database	13
3.3	Initiate a New Program.....	14
3.4	Open an Existing Program	15
3.5	Play Schedule Arrangement	15
3.6	Media Contents Management	17
	3.6.1 Video Files	17
	3.6.2 Graphic Files.....	19
	3.6.3 Text Files	21
3.7	Save Program	22
3.8	Export Program	22
	3.8.1 Export through USB	23
	3.8.2 Export to Player Directly	23
	3.8.3 Export to Player through Web Server	25
Chapter 4	DSA Configurator Utility	27
4.1	DSA Configurator Utility Main Menu	28
4.2	Create New Configuration	28
4.3	Open Existing Configuration	29
4.4	Edit Configuration.....	29
	4.4.1 Set Network Items.....	29
	4.4.2 Set Server Items	30
	4.4.3 Set Output Items	30
	4.4.4 Set System Items.....	31
	4.4.5 Advanced Items	31
	4.4.6 AV-IN Items.....	32
4.5	Save Edited Configuration	32
4.6	Export Configuration to Player	33

Chapter 1

Introduction

1.1 General Introduction

Advantech DSA-2130E series consists of application-ready digital signage players with advanced playback capabilities. DSA-2130E receives media content such as video, graphics, and text. It stores the content on its internal storage drive, and displays the content according to either a pre-defined play-list or commands through network input. DSA-2130E features the most advanced decoding and graphic processing functions. It outputs either digital or analog video signals for modern, high definition display devices such as plasma, LCD, and projectors. It is the ideal networked digital content player for advertising, presentation, training, and other media applications.



1.2 Features

Rich Content Presentation & Maximum Advertising Efficiency

Advantech Digital Signage solutions support MPEG 1/2/4, DivX 5, and MP3 video and audio formats, and, JPEG and BMP format for graphics display, and multiple language support for scrolling text. We offer user-definable layout templates with up to 7 display zones to deliver maximized advertising efficiency for our customers. Insertion of emergency events with user-defined priorities is supported along with versatile messaging.

Advanced Playback & Flexible Scheduling Capability

Advantech Digital Signage solutions deliver premier display quality; both HDTV (16:9) and VESA (4:3) display formats are supported. Apart from pre-scheduled events, instant scheduling is also supported for emergency event insertion.

Optimized Internal Storage Utilization and Content Management

Advantech Digital Signage solutions are equipped with internal storage drives. The media content can be encrypted before transmission to ensure security and prevent viruses, worms, and spyware. Playback, operation, and transmission logs and reports are available for advertisement billing and error tracking.

1.3 Specifications

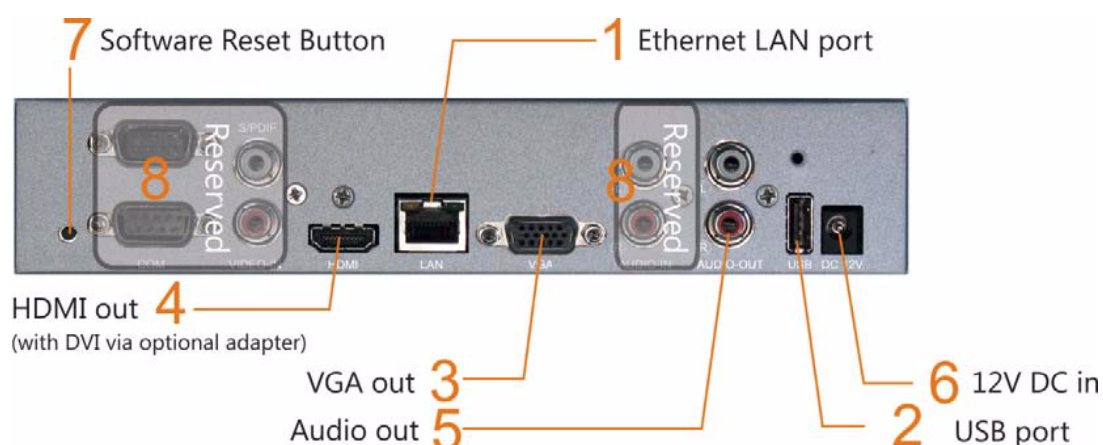
Table 1.1: Specifications

	HDD version	CF solid state version
Video format support	POPAI Screen Media Standards S6 (MPEG-1 SIF, 3 Mbps CBR) S7 (MPEG-480p, 10 Mbps CBR) S8 (MPEG-720p, 15 Mbps CBR) S9 (MPEG-2 480p, 6 Mbps CBR) S10 (MPEG-2 720p, 12 Mbps CBR) S11 (MPEG-4 AVC, 480p, 6 Mbps CBR) S12 (MPEG-AVC, 720p, 10 Mbps CBR) E4 (VC-1/WMV9, MP@ML, 720p) E5 (VC-1/WMV9, MP@HL, 1080p) E6 (MPEG-2, 1080p, 20 Mbps CBR) E7 (MPEG-ASP, 480p, 10 Mbps CBR) E8 (MPEG-AVC, 720p, 10 Mbps CBR) E9 (MPEG-AVC, 1080p, 25 Mbps CBR)	
Image format support	32bit color with transparency PNG, JPEG and BMP	
Audio codec support	POPAI Screen Media Standards S4 (MPEG L2 audio) S5 (MP3 audio, 384Kbps)	
Playback control	Schedules and play-lists	
Text banner	Variable scrolling speed, position and direction	
Content management method	LAN USB direct update	
Physical I/O connectors	HDMI 1.3 (Full-HD 1080p) USB 2.0 HOST Video Input: Composite x1 RCA jack Audio Input: R/L channel analog Unbalanced stereo x2 RCA jack Video Output: Composite x1 RCA jack Audio Output: R/L channel analog x 2 Unbalanced stereo RCA jack Ethernet 10/100 Mbps x1 RJ45 Serial Port RS-232C 1 x D-sub 9-pin	
Local storage	Internal 80GB 2.5" HDD (Holds up to 36 hrs of typical 5 Mbps high def. video)	
Accessories	RCA male-3.5mm female audio cable 3.5mm male-male audio cable Ethernet cable Wall-mount bracket VESA mounting kit (Optional)	
Power requirement	12 V, 2A DC	
Power consumption	Typical* 7 W	Typical* 5 W
Environmental	Operating temperature: 0 to 40° C (non-condensing) Humidity: t5 to 85% @ 40° C (non-condensing)	
Dimensions	211 x 153 x 43 (mm) (excluding projections) 8.3 x 6 x 1.7 (inches) (excluding projections)	

Table 1.1: Specifications

Weight	1.4 kg 3 lbs.	1.14 kg 2.5lbs
Safety	UL-approved AC adapters	
Certifications	CE/FCC RoHS	
Warranty	One-year limited parts & labor	
*typical usage when playing 1080P full resolution video		

1.4 Input/Output Interfaces



1. Ethernet port for network content update
2. USB port for USB content update
3. VGA port for analog video output
4. HDMI 1.3a connector for digital video and audio combined outputs, or digital video via option DVI adapter
5. Stereo RCA audio output
6. 12 V DC for power adapter
7. S/W Reset button to perform factory reset (see section 2.4)
8. Reserved (not enabled)
 - COM
 - SPDIF
 - VIDEO-IN
 - AUDIO-IN L/

1.5 Mechanical Drawing

Drawing shown with included mounting plate accessory, used for attaching the player via 4 screws with 76 mm x 228 mm (2.99" x 8.98") spacing. All dimensions in mm [inch].

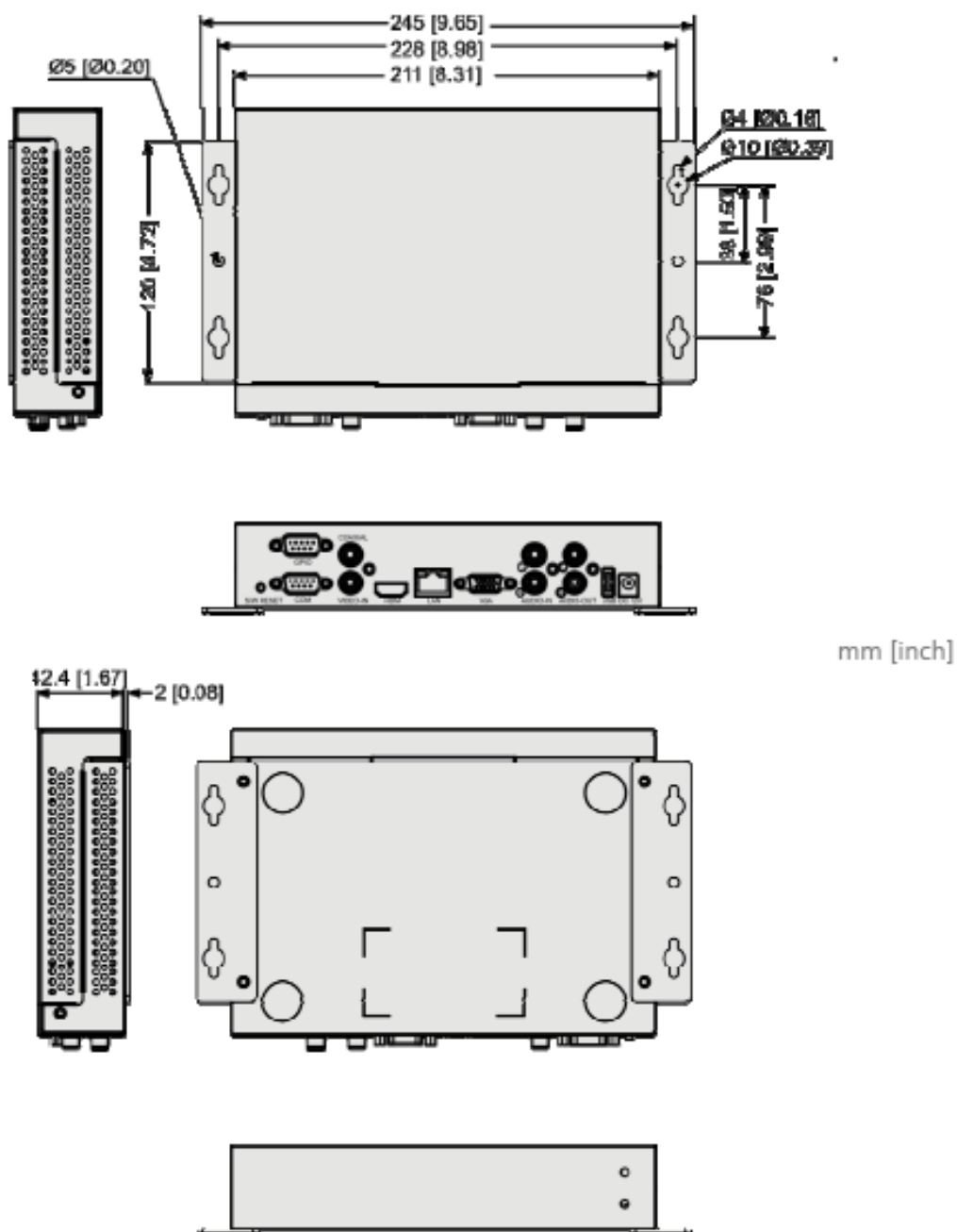


Figure 1.1 Mechanical Drawing

Chapter 2

Preparations and
Setting Up

2.1 Connecting the Power

1. Connect the power adapter cord with the AC power cord.
2. Connect the power adapter cable to the player's DC 12 V power port.



3. Plug the AC power cord into a power outlet and the Power LED (green) will light up.

Warning! Only use the power adapter packaged with the DSA-2130E. Using a different power adapter could damage the device.



2.2 Connecting to a Display

Connect your display to the Digital Signage Player's DVI port with the DVI cable that came with your display. Consult your display's user manual for cabling specifications.

Note!



1. The DSA-2130E is equipped with DVI-I port which can output the display with VGA (D-sub 15-pin) connector through a DVI-I-to-VGA adaptor.
2. If you would like to use the Composite or S-Video video output, you need to change the player's configuration setting with the DSA Configurator.

2.3 Installation of DSA Composer and DSA Configurator

You can install the DSA Composer on any Microsoft Windows based server or PC as a management station to provide simple content-display management of the DSA player (Advantech Digital Signage player). DSA Composer is created primarily for evaluation of the RISC-based Advantech Digital Signage Player. SDK is available for further development of the signage software.

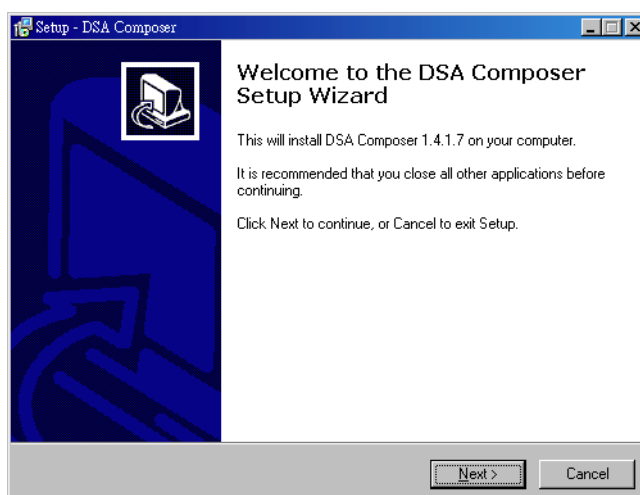
Note! You can download the latest version of DSA Composer / DSA Configurator from the following URL:



<http://www.advantech.com.tw/support/>

Follow the steps below for installation of DSA Composer and DSA Configurator:

1. Load the DSA Composer CD enclosed in the DSA player package.
2. Double click the “composer_setup.exe” icon and the setup utility will start with the welcome screen.
3. Click the “Next” button to continue.



4. The setup utility will choose a default folder to install the utility files.
5. The DSA Composer is now installed. Select “Yes” to launch player after the installation.
6. Click “Finish” button to exit the setup.



7. Once the installation finishes, you will see the icons of “DSA Composer” and “DSA Configurator” on your desktop as shown below:



8. Now you can begin configuring the Composer program by continuing to the steps in Chapter 3.

2.4 Reset to Default Configuration

The DSA-2101/2102 can be reset to the original default configuration setting if necessary.

1. Use a pen or a clip to push the RESET button in the rear panel; hold the button for a second or two.



2. Connect the power plug to turn the player on.
3. After a few seconds, the Status Indication LED will light up for 3 seconds and turn off.
4. Release the RESET button. The configuration setting of the player has been reset to the factory default.

The default configuration of the DSA-2101/2102 is listed as follows:

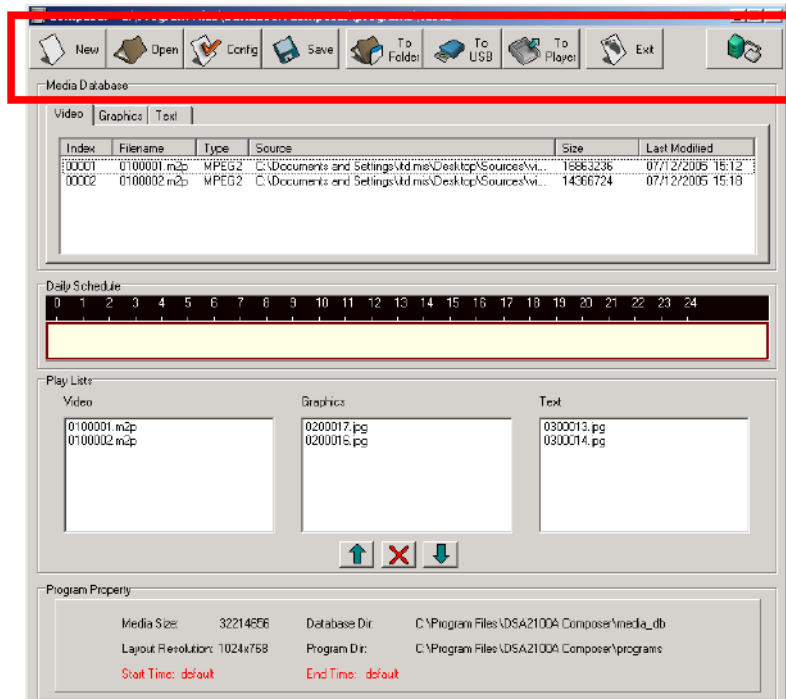
	Configuration	Default Setting
1	IP of the DSA play	192.168.1.100
2	Server URL	192.168.1.1
3	Internal web server	Port 8000
4	Polling interval	60 seconds
5	Video output port	DVI-I
6	Video output resolution	1024 * 768 @ 60 Hz
7	Max number of scroll text	3

Chapter 3

DSA Composer Utility

3.1 Feature-set of DSA Composer

DSA Composer is the content management utility to edit up-to 3 zones of the windowed content presentation within a 24-hour time span. Once you launch the DSA Composer utility, the main menu of the DSA Composer will be shown as the figure below.

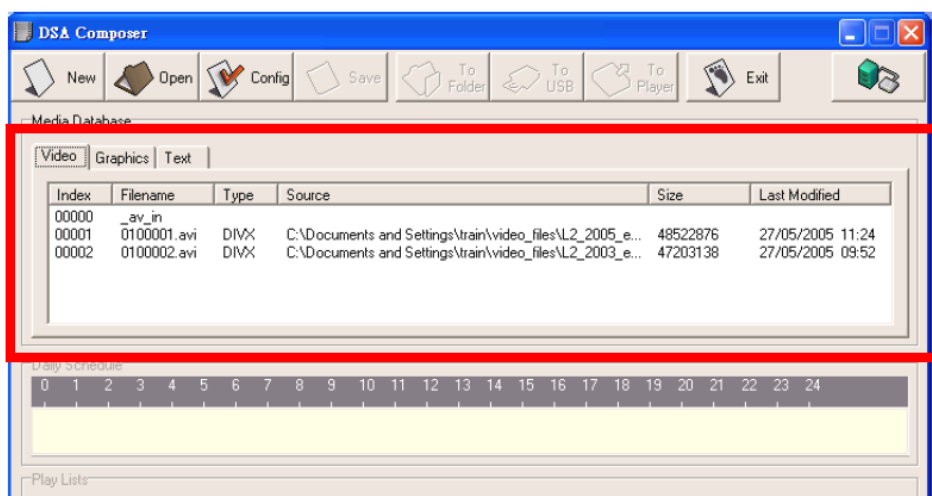


The main features of the DSA Composer include:

Icon	Function
New	Initiate a program
Open	Open an existing program
Config	Edit the configuration
Save	Save the edited program (including media files and play-list) in the local drive
To Folder	Export the edited program to a directory set by the user on a local or remote hard-drive (The player can download the program there per the customized setting.)
To USB	Export an edited program to a USB storage dongle (The program will be loaded to the player automatically when plugging-in the dongle to the player). Please refer to section 3.8.1
To Player	Export an edited program to the player directly through an Ethernet connection (Please note that the user must configure the DSA Composer program to set up this connection before utilizing this feature). Please refer to section 3.8.2
Exit	Exit Composer
Connection Status	Show the real-time connection status of the player

3.2 Media Database

The media files imported into the database will be listed here. Select among “Video”, “Graphics”, or “Text” tab to view the associated files in different media formats.



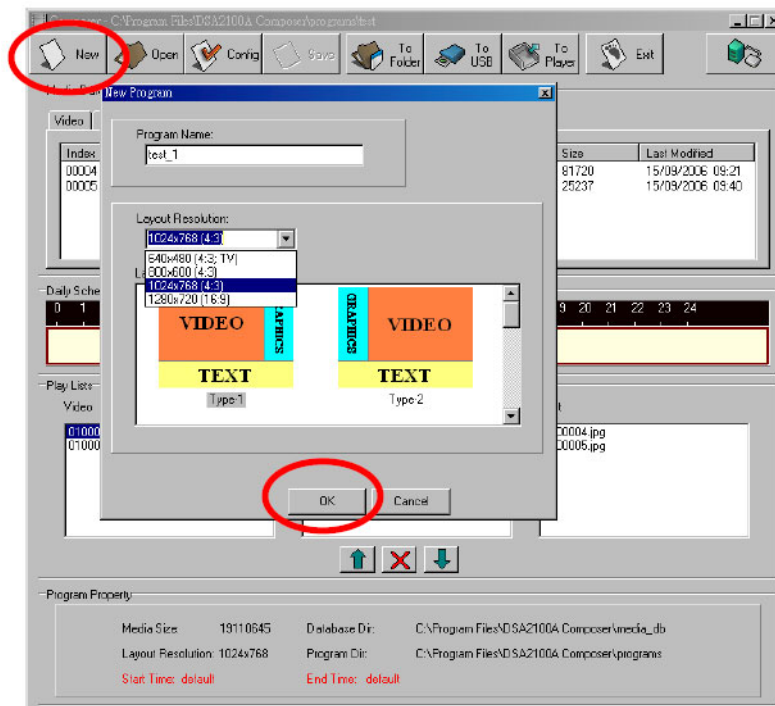
Acceptable formats are:

Content type	Media format
Video	MPEG 1/2/4, DivX (up to DivX 5 version), and VOB
Graphics	.JPG and .BMP
Text	ASCII text (.txt)

The method and process of managing the media contents will be described in details later in Section 3.5.

3.3 Initiate a New Program

1. Click on the “New” button, then a dialog with Project Name and Location editing field will pop up from the screen.
2. Input the new program name.



3. Select resolution: DSA Composer offers “640 x 480”, “800 x 600”, “1024 x 768”, and “1280 x 720” layout resolution for you to choose from.
4. Select layout template: DSA Composer offers several pre-defined layouts for you to choose from. For multi-zone presentations, DSA Composer supports up to 3 windows or zones for content presentation.

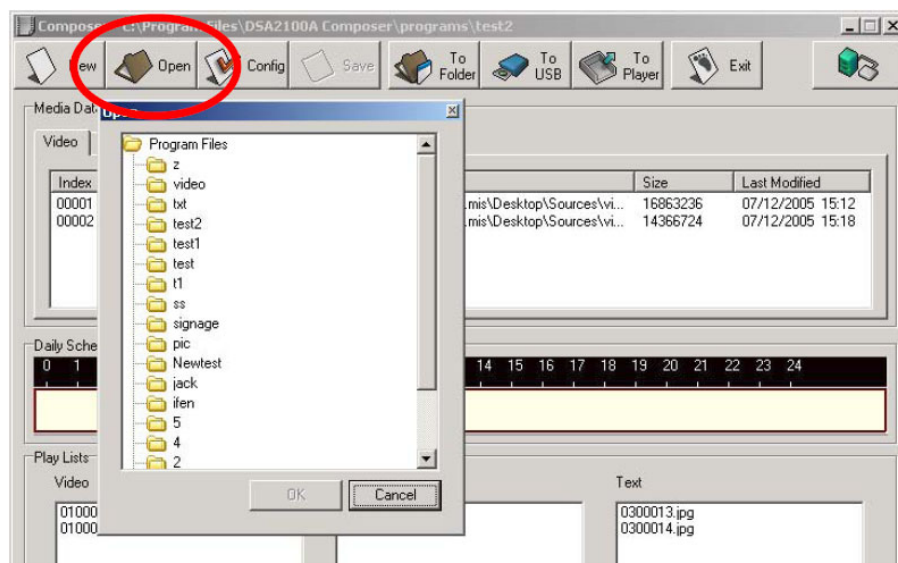
Note! DSA Composer can support full screens for only video or graphics as an alternative to the 3-zoned display mode:



- (1) Choose the “Type 6” of DSA Composer template; or
- (2) Choose the “Type 1~4” of DSA Composer template and edit the parameter of coordinates in the graphic play-list or video play-list.

3.4 Open an Existing Program

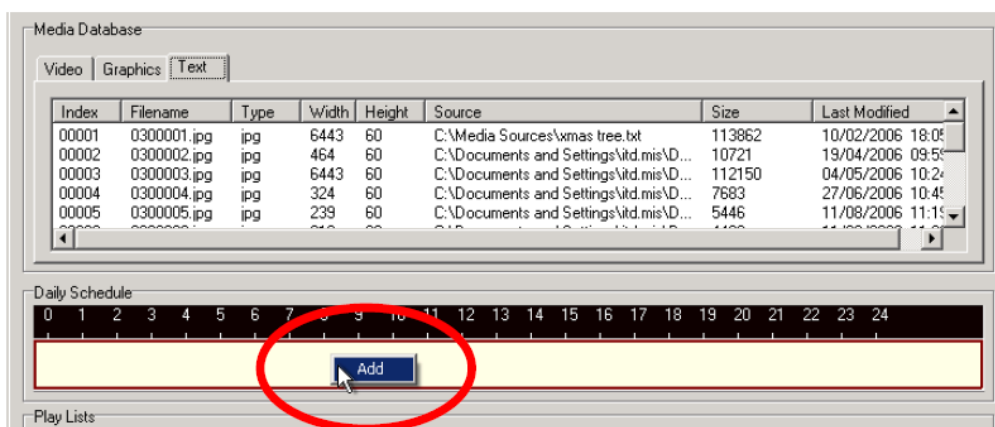
1. Click the “Open” button. A dialog box will pop up from the screen.



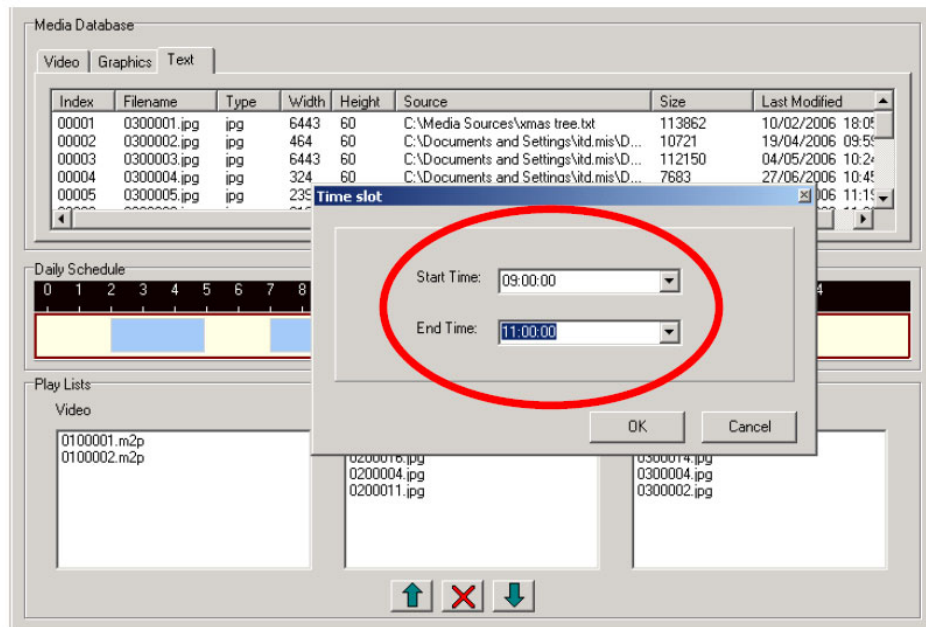
2. Select a pre-edited program then click “OK.” (Please note that the “OK” button will be enabled only when the selected directory is valid.)

3.5 Play Schedule Arrangement

1. DSA Composer allows you to set up the project playback schedule based on a 24-hour span. Right-click the mouse on the schedule bar and select “Add” to edit the “Daily Schedule”.

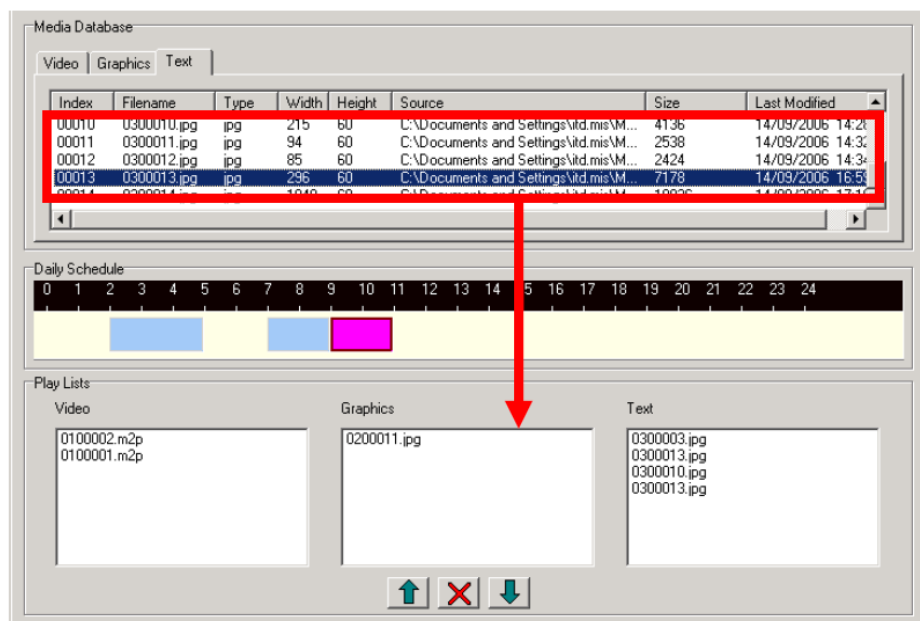


2. Enter the “Start Time” and “End Time” of the “Time Slot”.

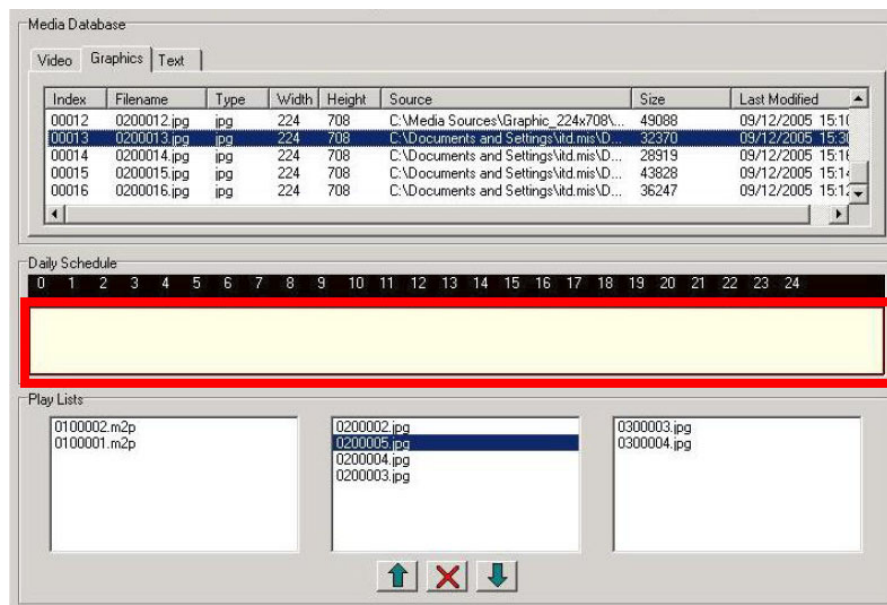


3. Once you set up the duration of the schedule, you can drag-and-drop the media files that you would like to display during this period of time into the “Play Lists” field with the process in Sec. 3.6.

Note! *If you have designated a time slot for the new display program you have created, please make sure the DSA player has the correct system time through DSA Configurator; see Sec. 4.4.4 for more details.*



- Repeat the steps above to add another time slot in the “Daily Schedule”.



Note! It is possible to drag-and-drop the media files from “Media Database” to the “Play Lists” directly without specifying the “Schedule” arrangement. This play-list will become the default play-list for 24-hour playback.

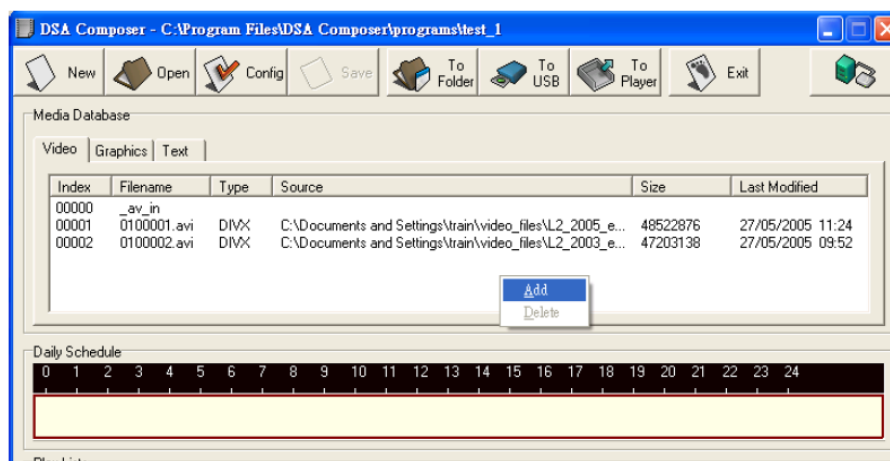


3.6 Media Contents Management

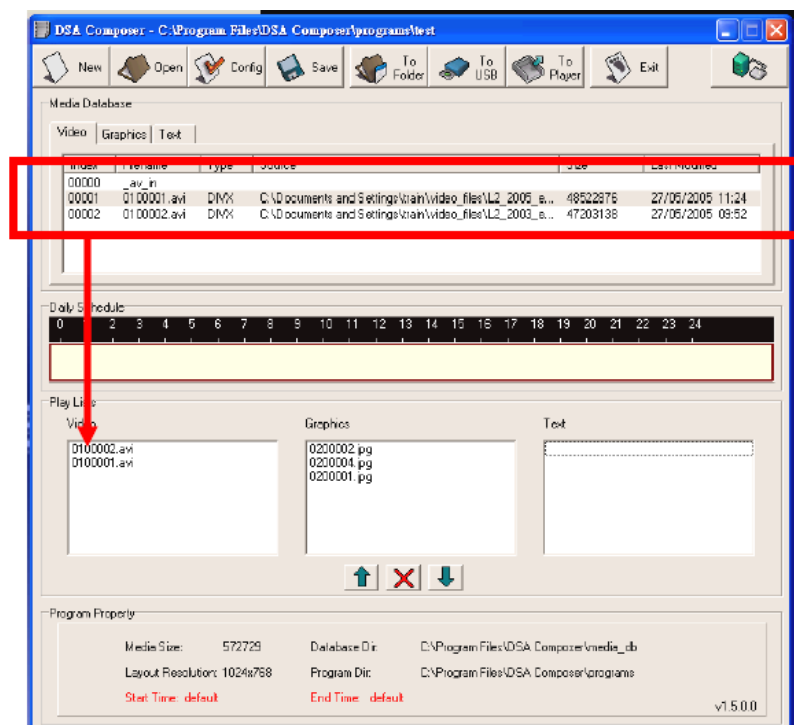
Follow the steps below to add video, graphic, and text media content into your play-list respectively. Only the media files in the repository with valid formats can be accepted.

3.6.1 Video Files

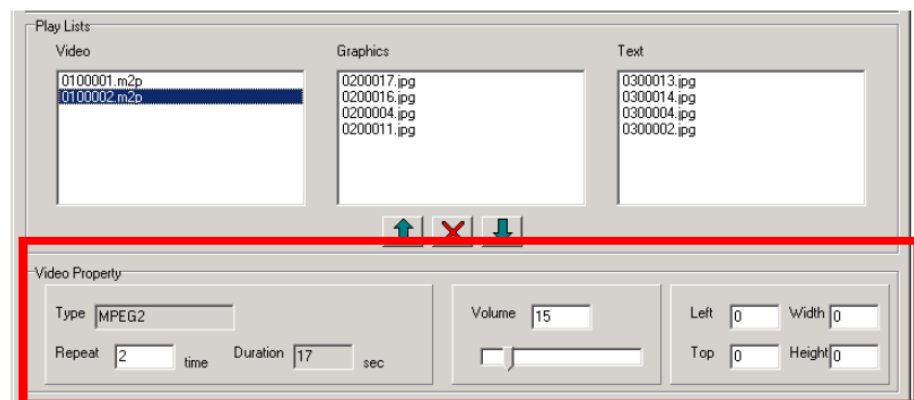
- To add a new video file: You can either drag and drop the video files into the video database, or right-click on the mouse to bring out the “Add/Delete” pop-up windows as shown below. Select “Add” to insert the video file(s) that you want to include in the media database.



2. Drag-and-drop the selected video file(s) from the media database to the video “Play Lists” field on the left.

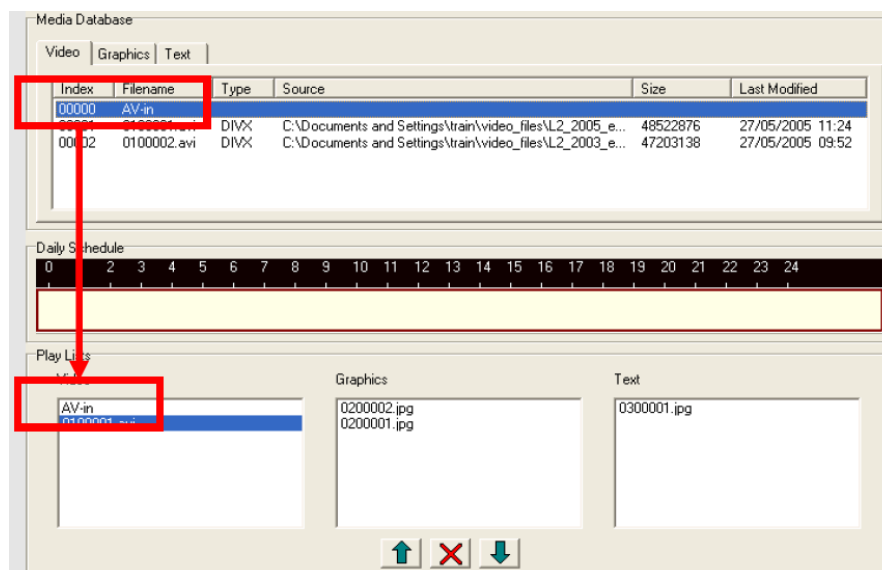


3. Use the “UP” and “DOWN” button to adjust the play sequence of the video files in the play-list. Use this to delete the video file if you want to remove it from the play-list.
4. Edit the properties such as repeat cycle and the playback volume in the “Video Property” field.



Note! *AV-input Application - The “AV-in” video option is only for AV-in supported Digital Signage Players, e.g. DSA-2102V. The application of this AV-in option is similar to the usage of video media content, simply drag and drop “AV-in” to the play-list as shown below:*



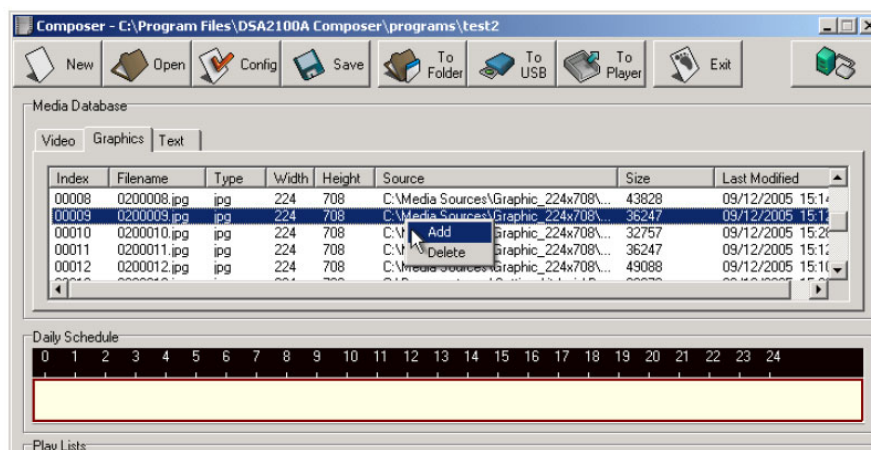


Note! If the “Left, Top, Width, Height” is set to “0, 0, 0, 0”, the video clip resolution will be automatically adjusted to fit the display screen list.

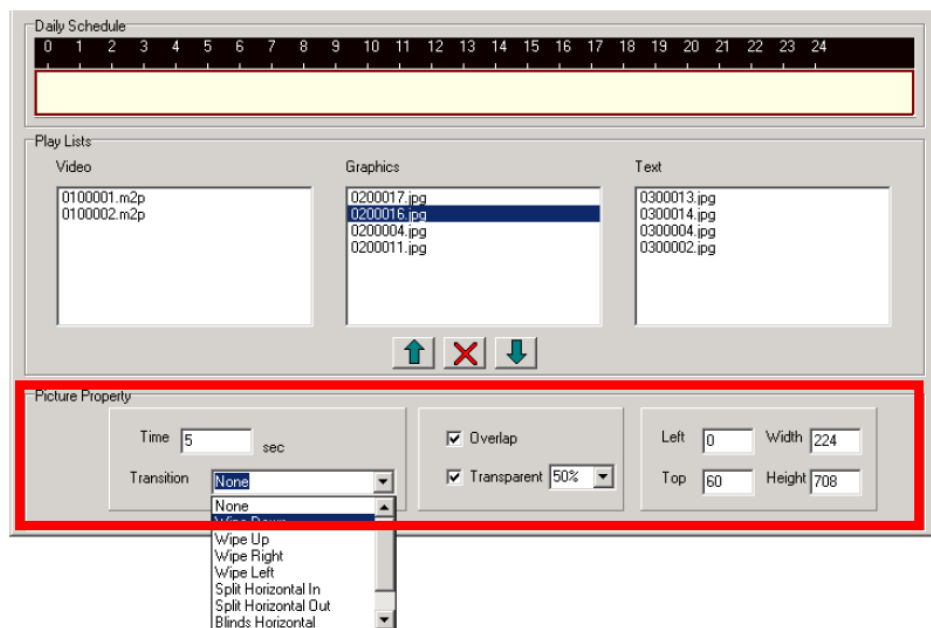


3.6.2 Graphic Files

- To add a new graphic file: You can either drag and drop the graphic files into the graphic database, or right-click on the mouse to bring out the “Add/Delete” pop-up windows as below. Select “Add” to insert the graphic file(s) that you want to include into the media database.

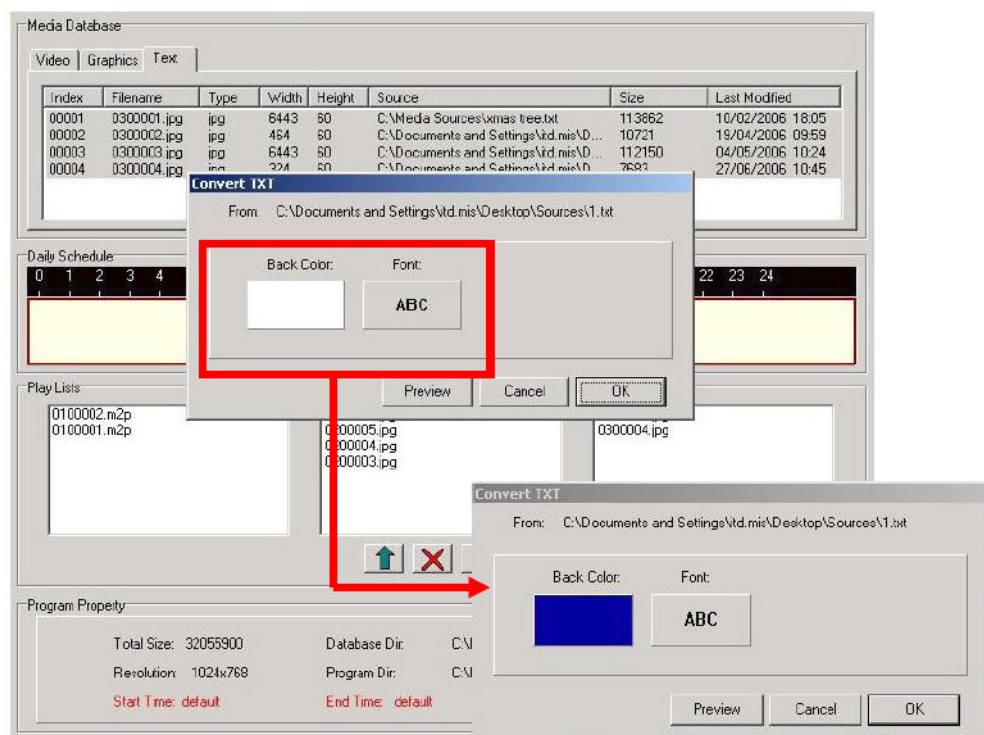


2. Drag-and-drop the selected graphic file(s) from the media database to the graphic "Play Lists" field in the middle.
3. Use the "UP" and "DOWN" button to adjust the play sequence of the graphic files in the play-list. Use to delete the graphic file if you want to remove it from the play-list.
4. Edit the property of the graphic contents
 - (1) Length of display time: input the desired length of display time. Minimal display time is 1 second.
 - (2) Select graphic transition effect: DSA Composer offers 8 different transition effects, i.e. Wipe Down, Wipe Up, Wipe Right, Wipe Left, Split Horizontal In, Split Horizontal Out, Blind Horizontal, Blind Vertical, etc.
 - (3) Select overlap and/or transparency effects.
 - (4) Set the position and size of the graphic frame.

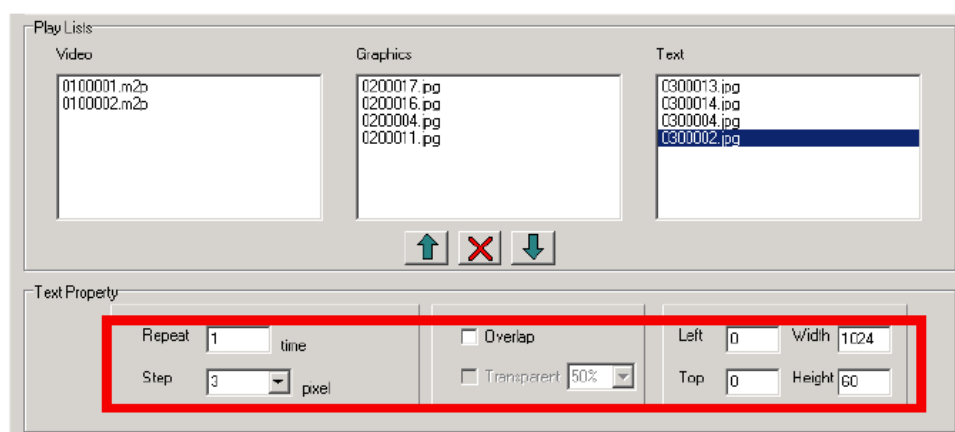


3.6.3 Text Files

1. To add a new text file: You can either drag and drop the text files into the text database, or right-click on the mouse to bring out the “Add/Delete” pop-up windows as below. Select “Add” to insert the text file(s) that you want to include into media database.
2. Once you insert the text file, a dialog box will pop up and allow you to set the background color and font of the text. DSA Composer will convert the .txt file into the .jpg format automatically.



3. Confirm the setting of the background color and font selected by clicking “OK.” Click on “Preview” for a look of the text before confirming the change.
4. “Drag-and-drop” the selected text file(s) from the media database to the text “Play Lists” field on the right hand side.
5. Use the “UP” and “DOWN” button to adjust the play sequence of the text files in the play-list. Use to delete the text file if you want to remove it from the play-list.



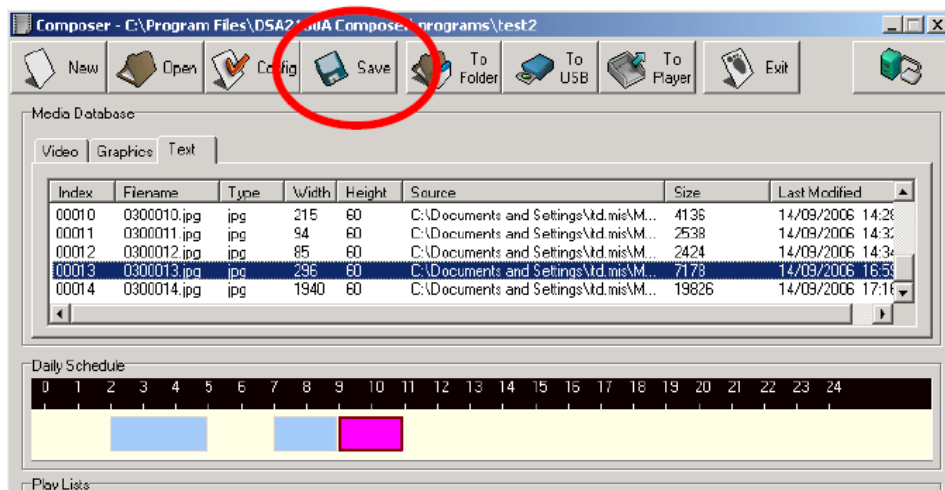
6. Edit property of the text

- (1) Click on each text file in the play-list and determine the number of times you would like the text to be repeated.
- (2) Set the speed of the scrolling text by how many pixel the text moved per second. The recommended speed is “4.” If you would like the text to be scrolled slower, set the figure to “3.” Adjust as necessary.
- (3) Select overlap and/or transparency effects.
- (4) Set the position and size of the text bar.

3.7 Save Program

You can save the edited program to the default directories in the local drive. This action will not modify the loaded program in the player.

Click the “Save” button when you finish editing the play-list. (All the play-list and media files are saved.) Please note that the opened program will be replaced.



3.8 Export Program

DSA Composer offers different methods to export a program to the player. When a program is open and/or edited, you can load the program to the player through:

1. A USB storage dongle (USB drive), then manually load the program to the player; or
2. The default place in the local drive where the player will automatically download the newly modified play-list schedule; or
3. A local or remote web server, where the player can download the new play-list schedule with customized setting.

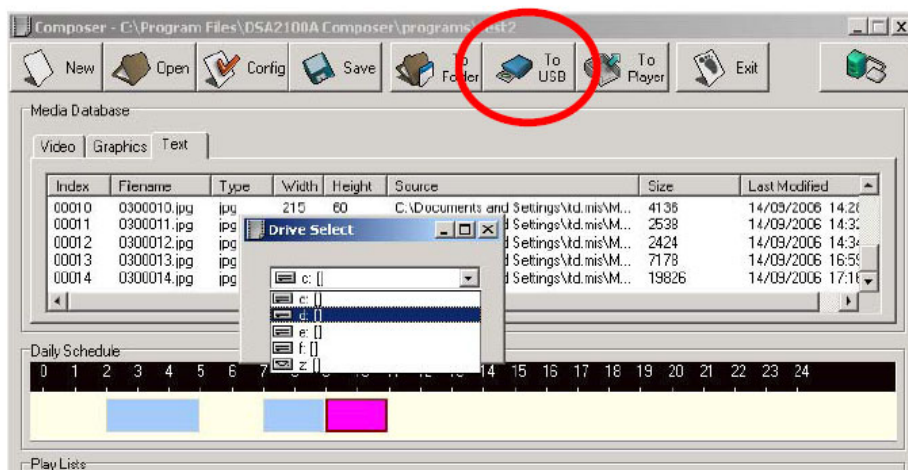
Note!



If you have designated a display time slot to play the contents, the player will be activated to play the newly uploaded content at the next applicable time. For example, if you have allotted the schedule to play your managed content at 8AM, but the time of day is already 10AM, the player will not display the new content until 8AM the next day. Please also note that if there is no specific time slot assigned in the “Daily Schedule”, the player will be activated immediately after the new program is uploaded.

3.8.1 Export through USB

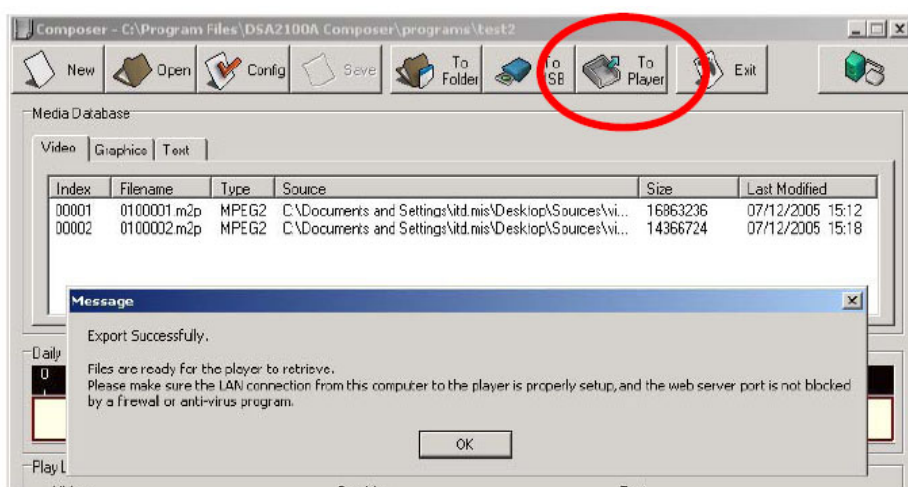
1. Click the “To USB” button, and then a dialog with “Drive Select” will pop up from the screen.
2. Choose the correct drive and click “OK”. The media files and play-list will be updated to the USB storage.



3. Plug the USB storage into the DSA player when it's powered off, and then turn on the player. It will load the play-list & media files into the internal memory drive.

3.8.2 Export to Player Directly

DSA Composer provides a convenient method to export a program to the player via network or direct cable connection. Exporting is accomplished by a built-in tiny browser running in the background and you have to keep the Composer up and running until the DSA Player downloads the program completely. The program will be loaded to the directory in a local drive where the DSA player will download the newly updated play-list automatically based on the player's default setting. The program will be automatically saved before exporting.



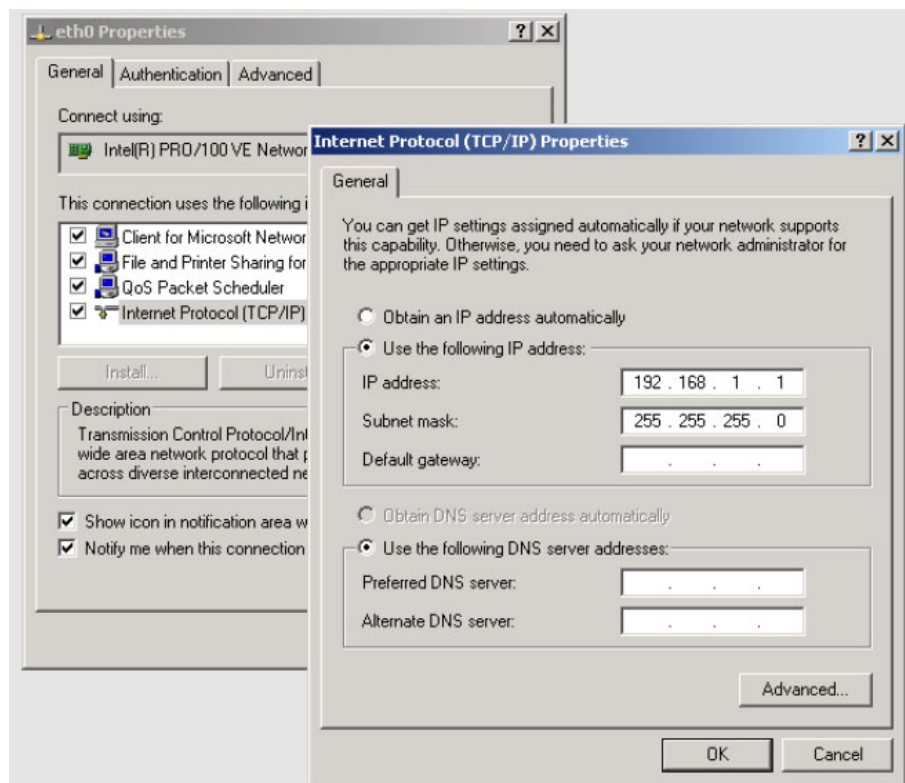
3.8.2.1 Export via Direct Cable Connection

1. Please make sure your PC/Notebook IP address is set to 192.168.1.1 and the Net Mask is 255.255.255.0.
2. Connect a “cross over” type of network cable between your PC and the Player.
3. Click on “To Player” and you will have a “Export Successfully” message after the upload is complete.
4. The Player will start the download within 60 seconds (default)

3.8.2.2 Export via LAN

1. Please make sure your PC/Notebook IP address is set to 192.168.1.1 and the Net Mask is 255.255.255.0.
2. Connect your PC to the network.
3. Click on “To Player” and you will have a “Export Successfully” message after the upload is complete.
4. The Player will start the download within 60 seconds (default).

Note! Please make sure you have set your PC/Notebook IP address as 192.168.1.1 and the Net Mask as 255.255.255.0 in advance.

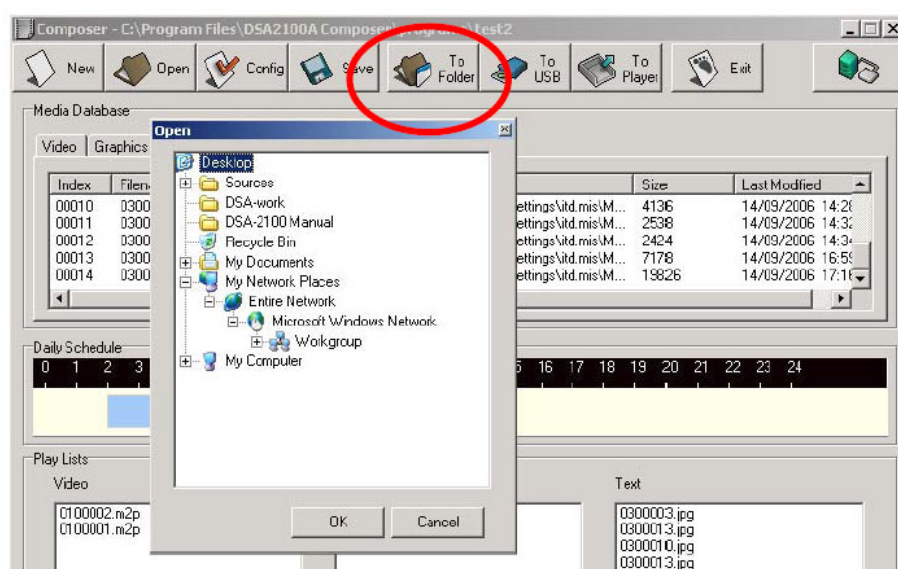


3.8.2.3 Export via Corporate LAN

1. Please consult with your Network/System Administrator to get the correct network information and configure the DSA player accordingly. (please reference Sec. 4.4.1).
2. Connect your PC to the network.
3. Click on the “To player” button and you will get a “Export Successfully” message after the upload is complete.
4. The Player will start the download within 60 seconds (default).

3.8.3 Export to Player through Web Server

Click the “To Folder” button to save the program to a chosen designation where the DSA player will download the program via a local or remote web server. (All the playlist and media files are saved.) The player will download the program from it based on the setting with the DSA Configurator. (See Chapter 4. for more information)



Note! Please make sure the web server is in the same subnet with the DSA player, so the DSA player can download the program correctly. For example, the default setting of the DSA player is as the IP address: 192.168.1.100 and the Net Mask: 255.255.255.0, then the IP address of the web server needs to be 192.168.1.x (x could be any number between 1 and 254, except 100.)



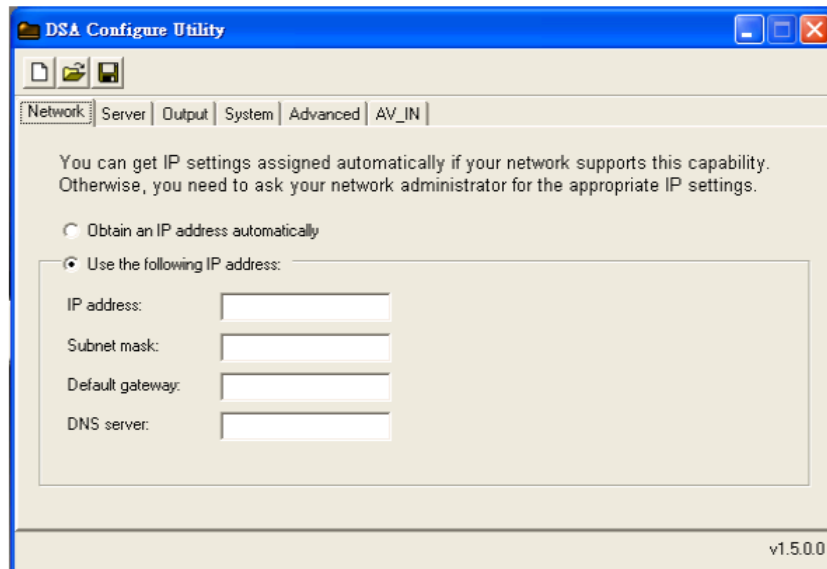
Chapter 4

DSA Configurator
Utility

4.1 DSA Configurator Utility Main Menu

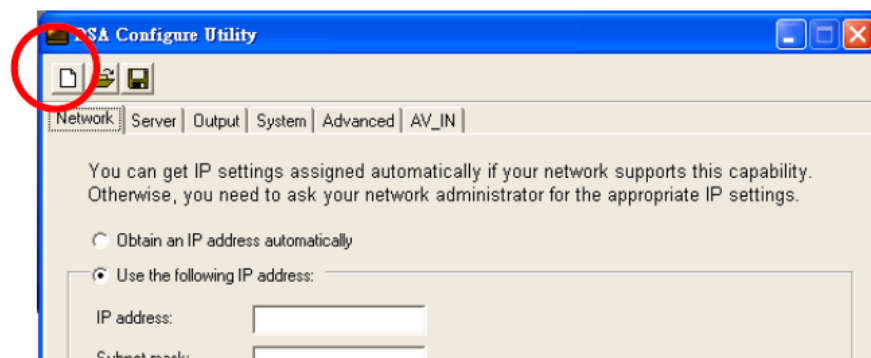
The DSA Configurator is the utility with which you can change and edit the configuration setting of the DSA player. A default configuration setting has already been loaded in the player.

Use the tool bar on top of the DSA Configurator window to create, open and save the configuration file.



4.2 Create New Configuration

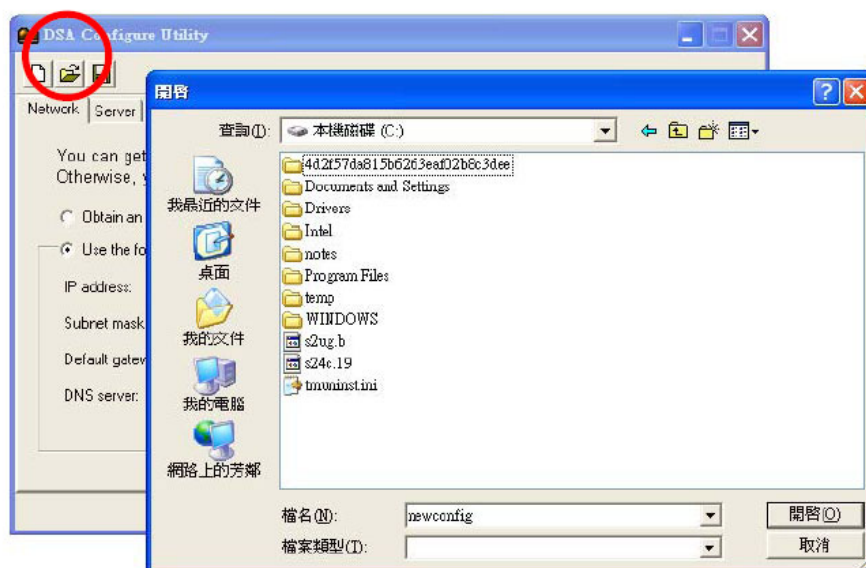
1. Click the “New File” button in the tool bar; the “Open/New file” dialog will pop up from the screen.



2. Input your new DSA configuration file name with path.

4.3 Open Existing Configuration

1. Click “Open File” in the menu bar; the “Open/New file” dialog will pop up from the screen.



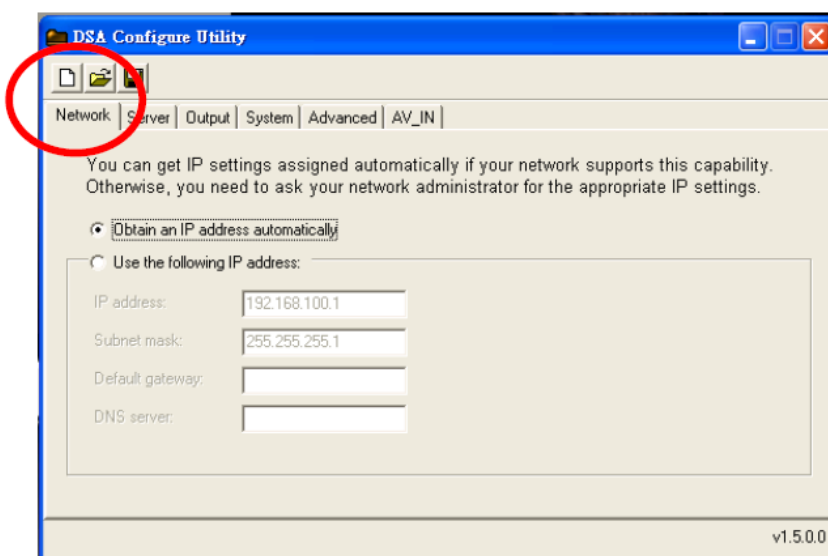
2. Select your specific DSA configuration file then click “OK.”
3. DSA Configure will display default values of the selected configuration file.

4.4 Edit Configuration

Enter each field in every tab of DSA Configuration to edit settings on Network, Server, Output, System and Advanced settings for the DSA player.

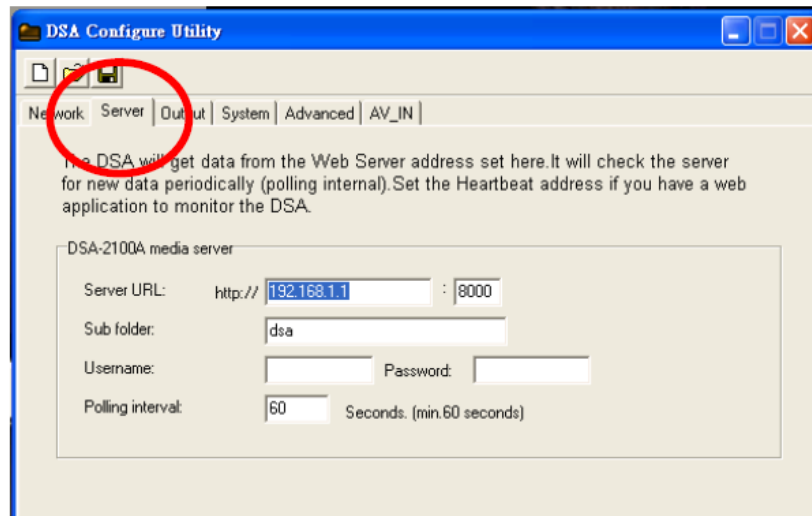
4.4.1 Set Network Items

Under the “Network” tab, for DHCP network, choose “Obtain an IP address automatically”; for Static IP address networks, enter the pre-defined network settings for the signage player (Please consult your network administrator for detailed network information).



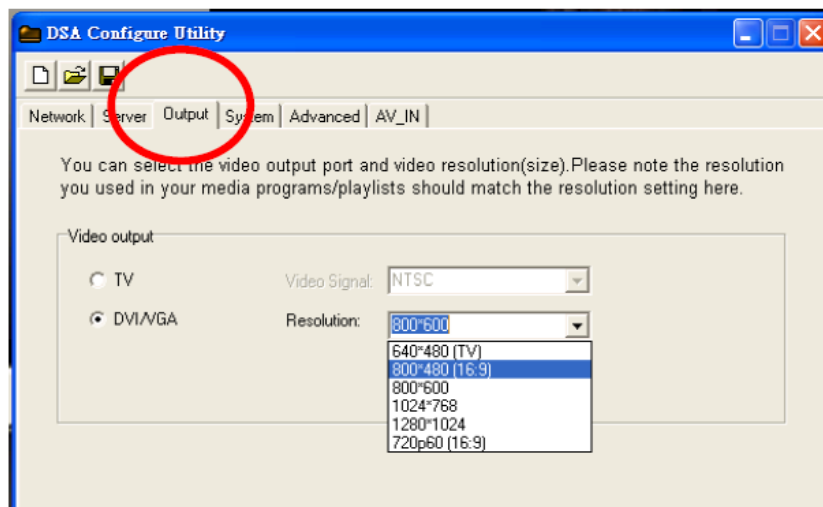
4.4.2 Set Server Items

Under the “Server” tab, set the configuration of the media server and the interval for data updates.



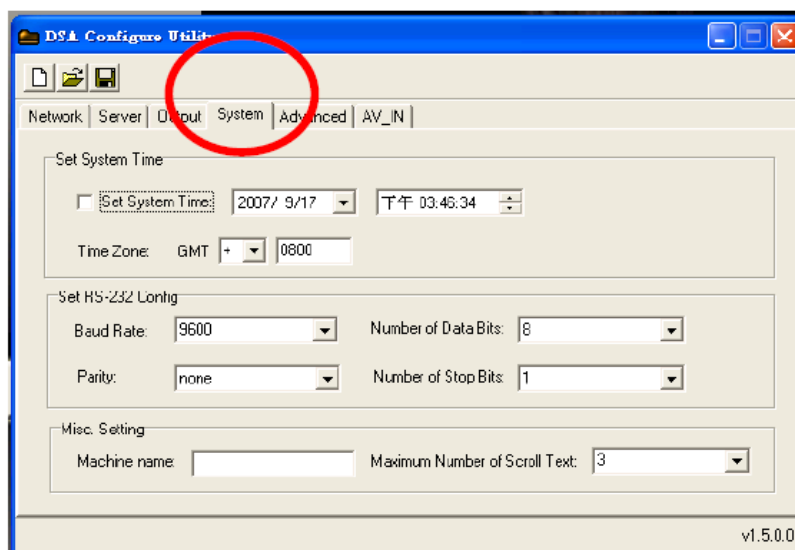
4.4.3 Set Output Items

Click on the “Output” tab to set DSA video output option. Please select the resolution of the display screen that you will be using to display the play-list you have created.



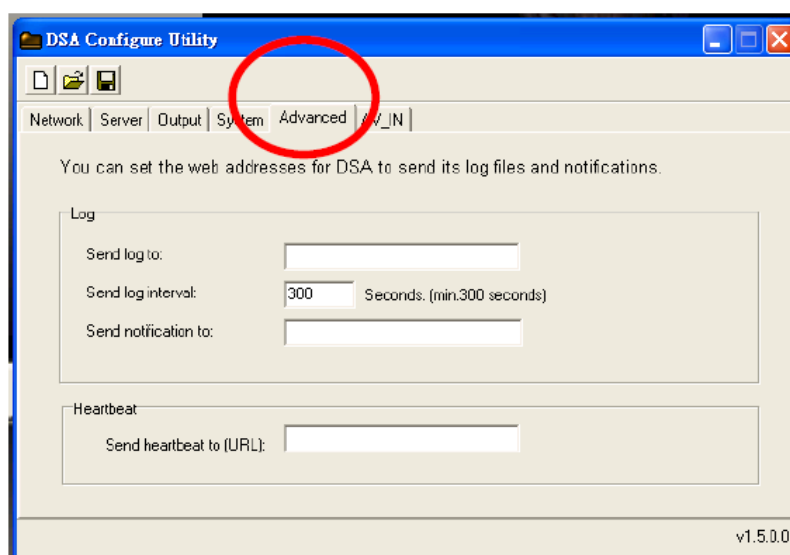
4.4.4 Set System Items

Click on the “System” tab to set the system time and the RS-232 Configuration.



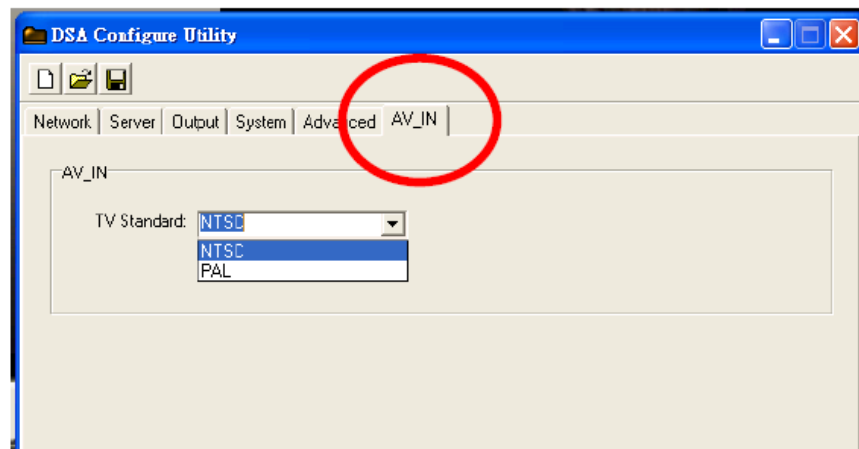
4.4.5 Advanced Items

1. You may select “Enable log uploading” and enter the uploading server URL.
2. For exception handling, you may select “Send notification to server” and enter a designated server to send the notifications.
3. Heartbeat refers to the time interval for data updating proactively from media server. You can enter a designated server to send the heartbeat.



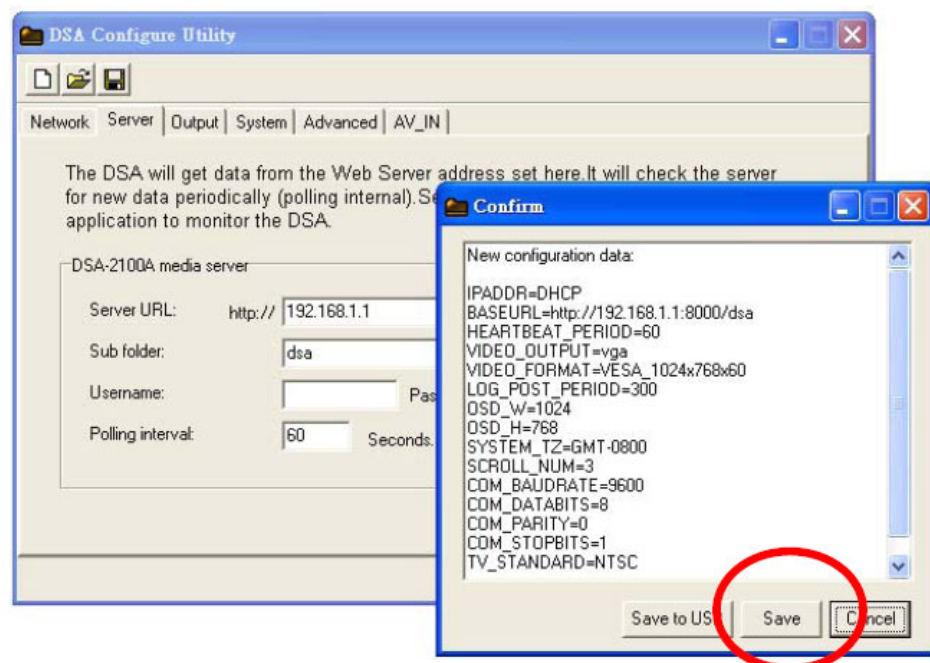
4.4.6 AV-IN Items

Select the TV standard signal for the AV-in supported DSA Digital Signage Players, e.g. DSA-2102V. This selection will not affect the performance of other non-AV-in DSA models.



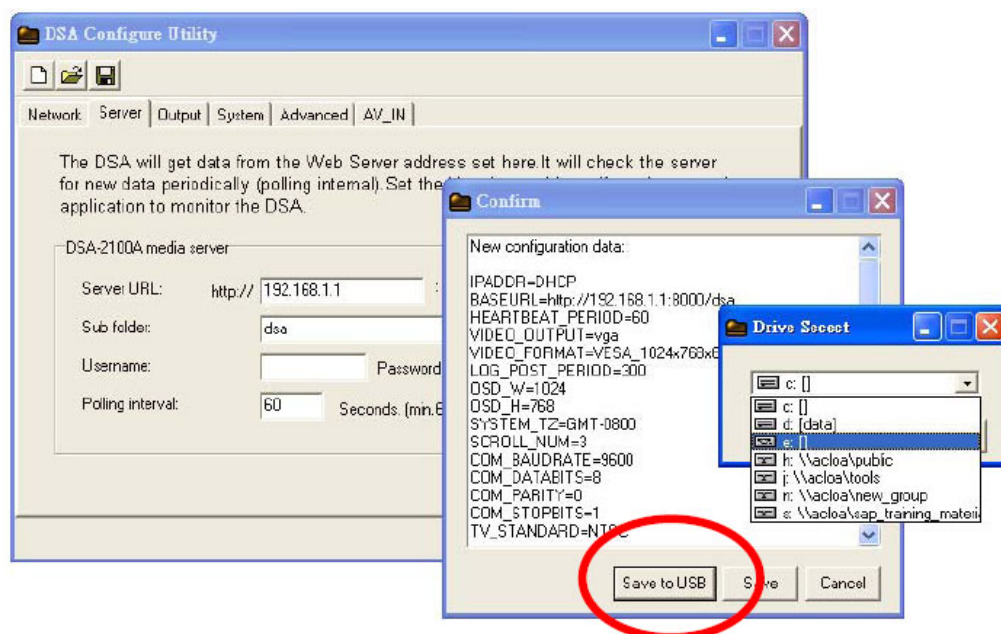
4.5 Save Edited Configuration

1. Click "Save" on the tool bar located in the "DSA Configure" screen; the "Confirm" dialog box will pop up a log containing the change you have made.
2. Click the "Save" button in the "Confirm" dialog to save the configuration locally or go to the steps in Section 4.6 to export the configuration to the DSA player.



4.6 Export Configuration to Player

1. Click “Save to USB” in the “Confirm” dialog.
2. Select the USB storage device and click “Save” to begin exporting.



3. Plug the USB storage into the DSA media player when it's powered off, and then turn on the player. It will download the new configuration setting automatically.

www.advantech.com

Please verify specifications before quoting. This guide is intended for reference purposes only.

All product specifications are subject to change without notice.

No part of this publication may be reproduced in any form or by any means, electronic, photocopying, recording or otherwise, without prior written permission of the publisher.

All brand and product names are trademarks or registered trademarks of their respective companies.

© Advantech Co., Ltd. 2009