

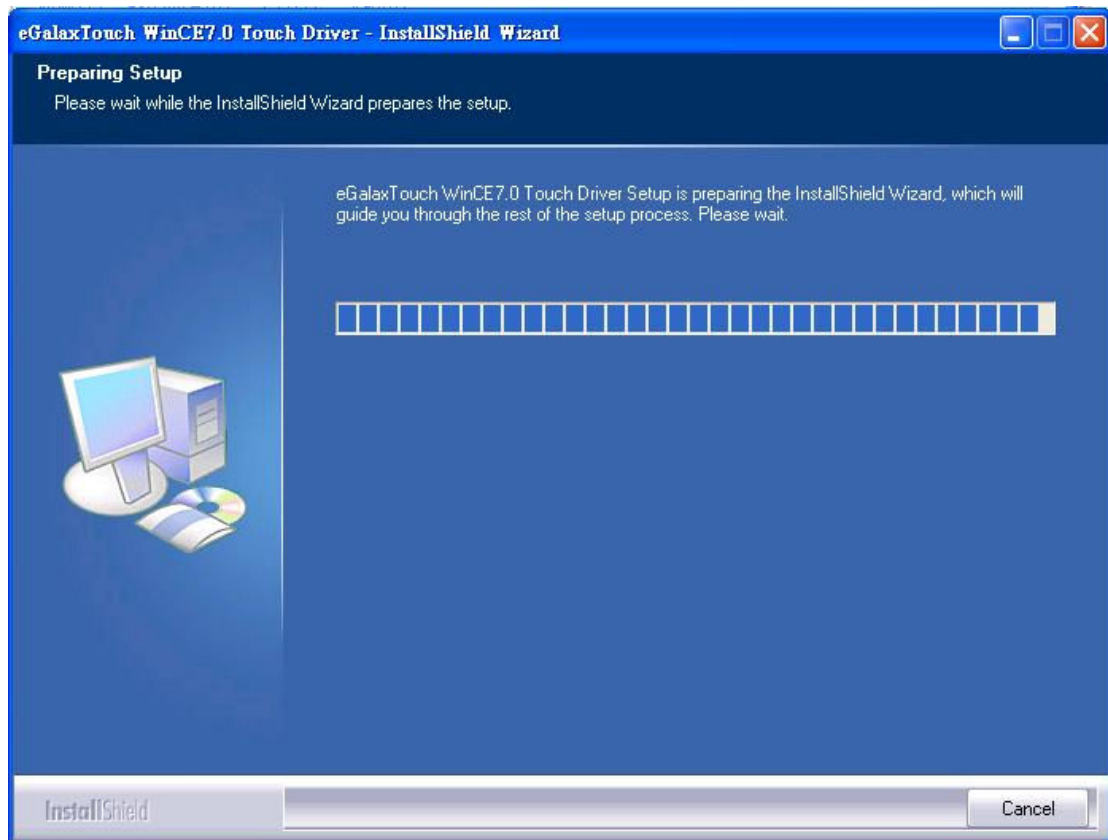
## eGalaxTouch WinCE Touch Driver Installation Guide

Version: 3.1.7.3927 (BETA)

Operation System: Windows CE .7.0 (Build 1347)

Release Date: 9-27-2011

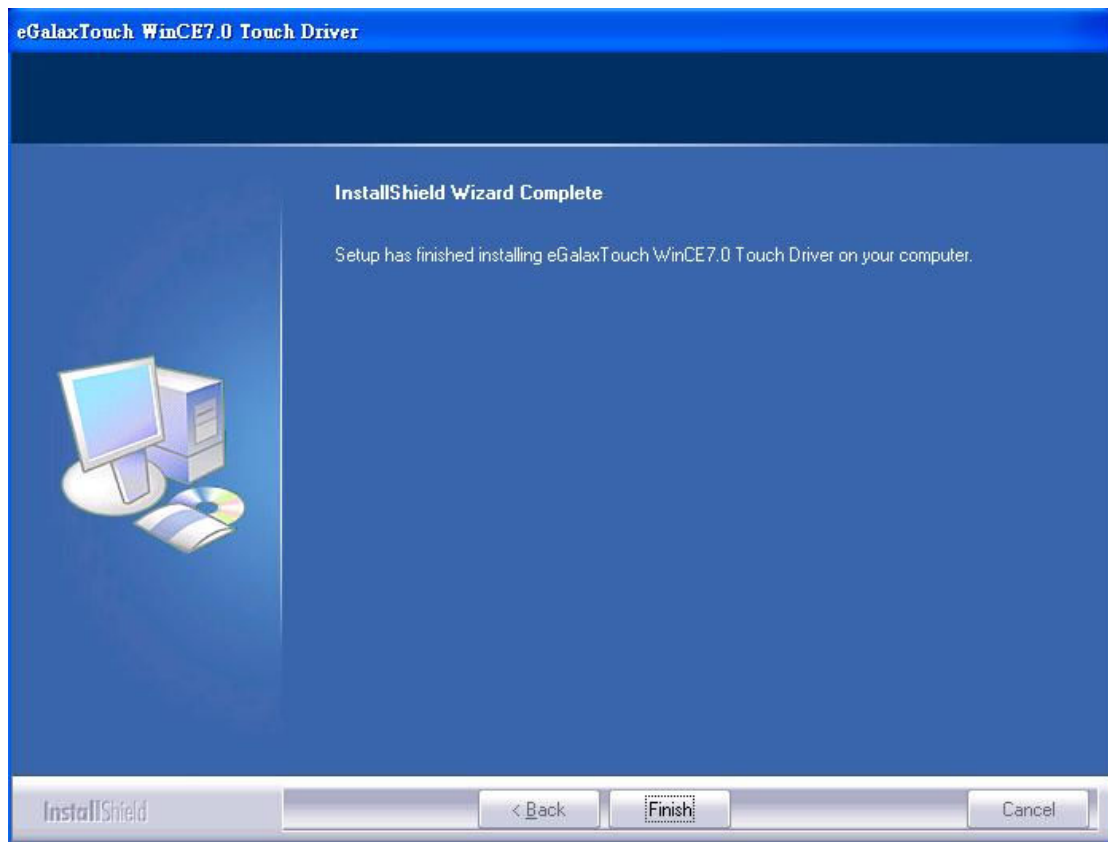
1. Execute setup.exe, you will see the installation window.



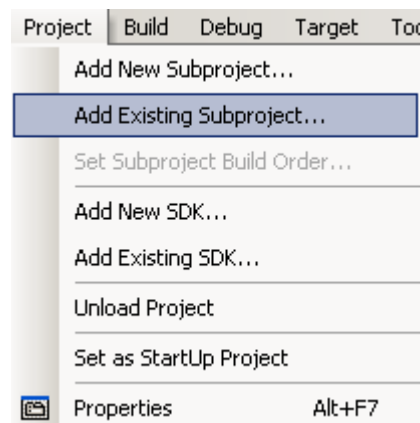
2. Select Yes to continue the installation, or select No to cancel it.



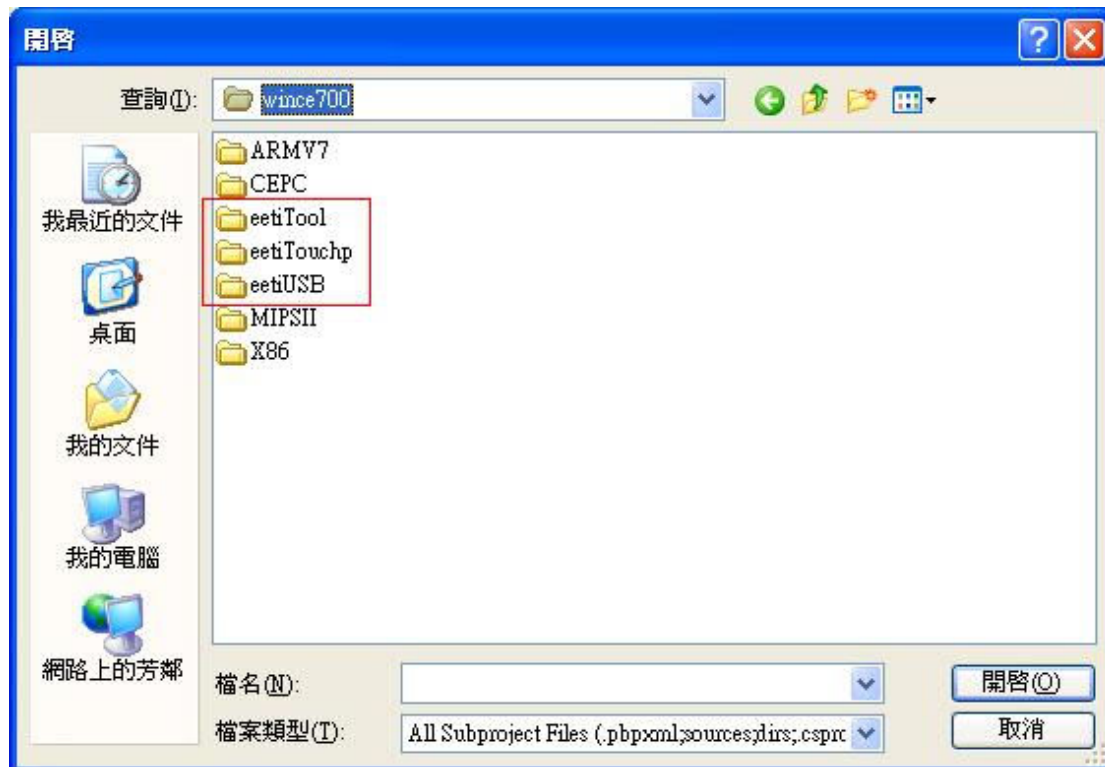
- When installation successfully finish, you will see the window. Click Finish to close the installation window.



- Launch Visual Studio 2008 with Platform Builder WinCE7.0. Open your OSDesign which you want to install eGalaxTouch Touch Driver.
- Select Project → Add Existing Subproject



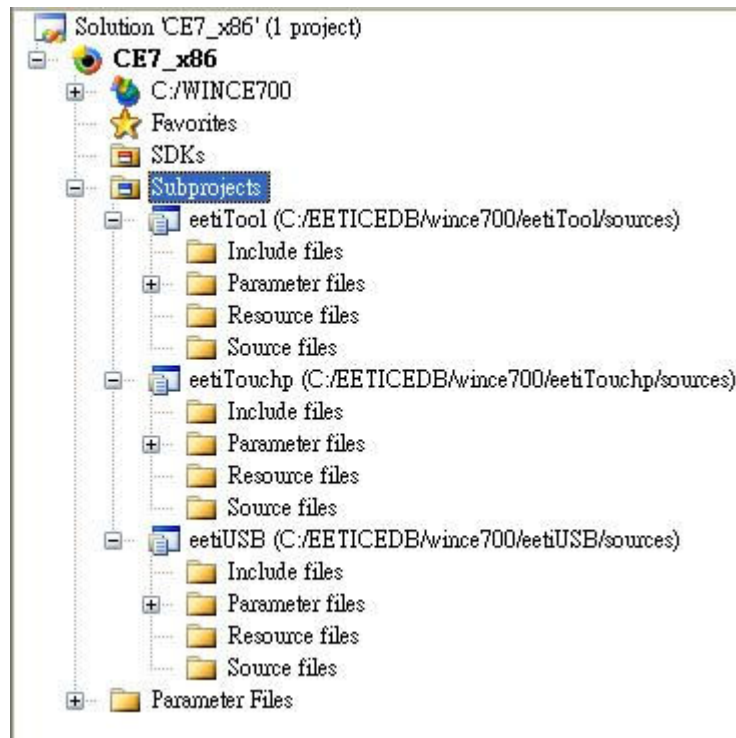
## 6. Switch the folder to C:\EETICEDB\wince700



## 7. To add subprojects into your OSDesign, Choose the pbpxml file under different folder. (i.e. eetiTouchp, eetiTool and eetiUSB)

**[For USB Controller]**Add **eetiUSB** and **eetiTouchp** subprojects into your OSDesign**[For Utility]**Add **eetiTool** subprojects into your OSDesign

## 8. After you add catalog items, you will find the subprojects inside your OSDesign.



9. Select Build → Make Run-Time Image to make the new image.

WinCE7.0 Gesture Components:

If you wish to add WinCE built-in gesture engine, please add these component in you OSDesign.

1. Default Gesture Response
2. Gesture Physics Engine
3. Touch Gesture GWES component

These settings make sysgen flags set:

SYSGEN\_TOUCHGESTURE

SYSGEN\_GESTUREANIMATION

SYSGEN\_PHYSICSENGINE

