

How to solve compatibility issue with SSD during Windows XP installation process

When you try to install Windows XP on ARK-3440 with SSD, you may encounter error message during installation. Please refer to the error message in Figure 1.

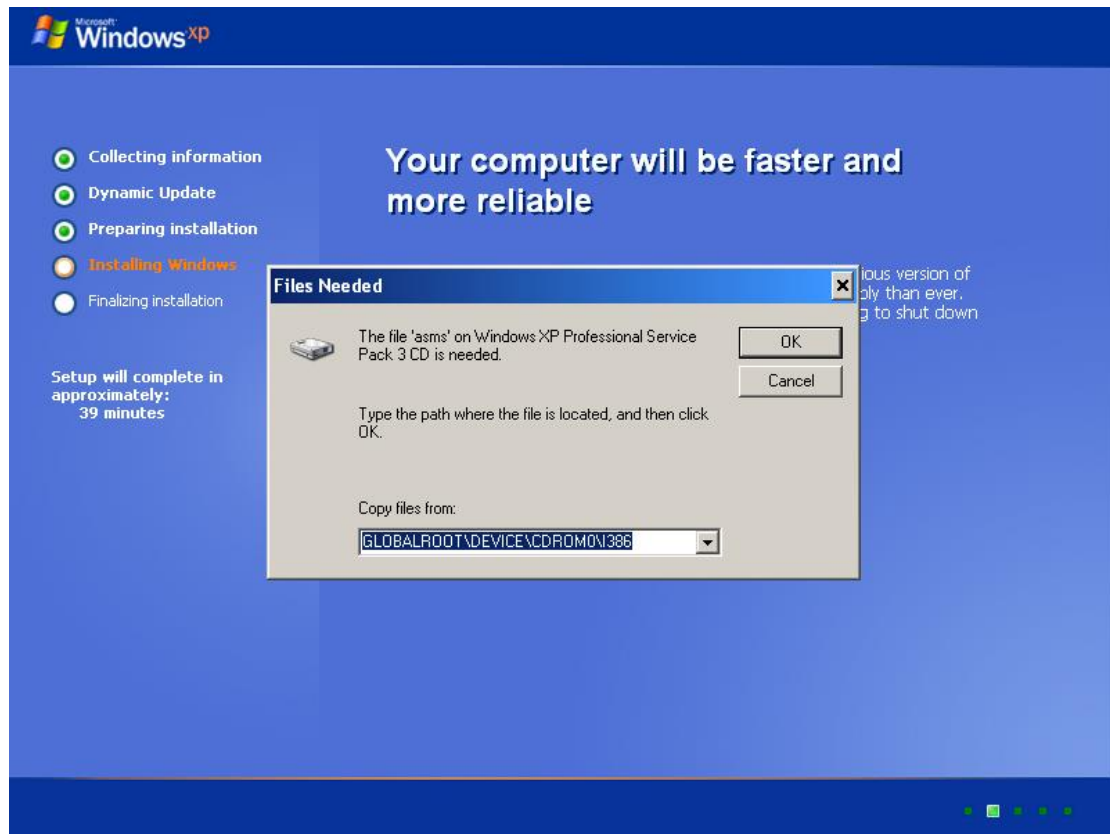


Figure 1 asms error message

The error message is "The file 'asms' on Windows XP Professional CD-ROM is needed". For this particular problem to be solved, [Microsoft official website](#) provides some possible solutions. If none of them work, please modify the path in the prompt message as D:\i386 or any other disk label (A~Z). Your DVD-ROM should still be able to be found during installation process. Once you find the correct path, please copy it and click OK. One may have to do the same paste and OK step for around 20 times before the whole process has done.